



**"Little Wonder"**

DIVISION OF SCHILLER-PFEIFFER, INCORPORATED



1028 STREET ROAD, P.O. BOX 38

AREA CODE 215-357-5110

SOUTHAMPTON, PA 18966

AREA CODE 215-464-5300

## **OPERATING INSTRUCTIONS FOR LITTLE WONDER PRODUCTS WITH ECHO MODELS SV-2A TWO CYCLE ENGINE AND SV-2AE TWO CYCLE ENGINE WITH CDI IGNITION**

### **FUEL AND LUBRICATING OIL (engine only)**

Your Little Wonder 2 cycle fuel powered product is equipped with an Echo Model SV-2A, or SV-2AE, two stroke, air cooled engine which requires a fuel mixture of gasoline and lubricating oil.

The approved fuel to oil ratio is 32 parts regular gasoline to 1 part of Echo approved oil, (32:1), or 20 parts regular gasoline to 1 part oil when using another reputable 2-cycle air cooled engine oil, (20:1). **USE ONLY REGULAR GASOLINE FOR MIXING.** Do not use unleaded gasoline. The oil and regular gasoline should be thoroughly mixed in a clean container. **DO NOT ATTEMPT TO MIX IN FUEL TANK.** Pour half the regular gasoline into the container, add the oil and shake to insure thorough mixing. Add the remainder of the regular gasoline and shake once again. The fuel tank capacity is 17.5 fluid ounces or 1.1 pints.

### **CAUTION**

The clutch engagement speed is 3,000 RPM, approximately; therefore, the unit will function at fast idle.

(NOTE) Recoil starter: Use short pulls - only 1/2-2/3 of starter rope for starting. Always hold the unit firmly with both hands.

### **1. STARTING THE ENGINE COLD**

- a. Be sure that the fuel tank is filled with the correct mixture of regular gasoline and 2 stroke oil.
- b. Switch the ground switch to the "START" position.
- c. With the choke completely closed, pull the starter rope three to five times with short pulls. This draws fuel into the firing chamber.
- d. Push the choke lever all the way up (To open choke completely.)
- e. Pull the recoil starter rope smoothly and quickly until the engine fires.
- f. If the engine stops, close the choke and pull on the starter rope twice; then open the choke, pull the starter rope until the engine starts and continues to run.

### **2. STARTING THE ENGINE HOT**

- a. Switch the ground switch to the "START" position.
- b. Pull the recoil starter rope smoothly and quickly until the engine runs.
- c. Follow the procedure for starting a cold engine after the engine has been left stopped for half an hour or more.
- d. After starting the engine by using the choke, adjust the choke as soon as the first explosive roar is heard.
- e. If the engine does not fire after a few pulls, squeeze the throttle to fast idle and try again.
- f. If it still does not start, check the plug.
- g. In the event that the engine has run out of fuel, it may be necessary after refueling to pull the recoil starter 8-10 times in order that the fuel pump can prime the carburetor.

### **3. STOPPING THE ENGINE**

The engine will normally be stopped by moving ground switch to the "STOP" position. In an emergency, should the switch fail to stop the engine, pull the choke to the closed position and the engine will stall.

### **STEPS TO BE TAKEN DURING OPERATION**

- 1) After starting, idle the engine for 3-5 minutes for warm up.
- 2) After idling, gradually open the throttle and the unit will start to operate as the engine revolution reaches approximately 3,000 RPM.
- 3) The engine keeps on running even when unit has stopped due to an excessive load. In such cases, remove the load and allow time for the cutter to reach the specified revolution before resuming the job. In the event that the unit gets stuck due to an overload, reduce the engine speed to idle, remove the obstruction and resume the work by squeezing the throttle lever.

## ECHO INCORPORATED

### LITTLE WONDER PRODUCTS NINETY DAY LIMITED WARRANTY

Echo Incorporated, referred to hereafter as Echo, warrants to the original purchaser at resale that each new Little Wonder product shall be free from defects in material and workmanship for a period of ninety (90) days from the date of the original purchase. In the event of a defect in a Little Wonder product, Echo will repair and/or replace the defective part or parts free of charge.

In the event of a malfunction or failure in a Little Wonder product simply deliver or send postage prepaid within the warranty period of ninety (90) days, the complete Little Wonder product to your nearest authorized Echo dealer. Echo reserves the right to inspect the claimed defective part or parts to determine if the defect or malfunction complained of is covered by this warranty. Upon confirmation that the malfunction or failure is the result of a defect covered by this warranty, Echo shall, within ninety (90) days after receipt of the product, at its option, repair and/or replace the defective part or parts free of charge.

Authorized Echo dealers are located throughout the United States and Canada to assure fast and efficient service to your Little Wonder product. If you do not know the location of an authorized Echo dealer, you can obtain such information by contacting Echo at the address listed below. Echo assumes no responsibility for any damage, defects, or costs resulting from repairs and/or modifications of an Echo product performed by any person who is not an authorized Echo servicing dealer or distributor.

This warranty shall only cover defects arising under normal usage. Echo assumes no responsibility whatsoever if the Little Wonder product shall fail during the warranty period by reason of:

1. Misuse, negligence, physical damage or accident.
2. Lack of maintenance as prescribed in the Owner's Manual.
3. Improper adjustments of ignition, timing and carburetors.
4. The use of fuels and lubricating oils not approved by Echo.
5. The use of parts or accessories not approved by Echo.
6. Operation of the unit with the air filter removed.
7. Operation at engine speeds in excess of Echo recommendations.
8. Repair by an unauthorized party during the warranty period.
9. Normal wear and tear.
10. Operation of the unit with an incorrect fuel/oil ratio

ECHO MAKES NO FURTHER EXPRESS WARRANTIES OR REPRESENTATIONS EXCEPT THOSE CONTAINED HEREIN. NO REPRESENTATIVE OR DEALER IS AUTHORIZED TO ASSUME ANY OTHER LIABILITY REGARDING LITTLE WONDER PRODUCTS. THE DURATION OF IMPLIED WARRANTIES GRANTED UNDER STATE LAW, INCLUDING WARRANTIES OF MERCHANTABILITY AND FITNESS FOR A PARTICULAR PURPOSE ARE LIMITED IN DURATION TO THE DURATION OF THE EXPRESS WARRANTY GRANTED HEREUNDER. ECHO SHALL IN NO EVENT BE LIABLE FOR DIRECT, INDIRECT, SPECIAL OR CONSEQUENTIAL DAMAGES. SOME STATES DO NOT ALLOW LIMITATIONS ON HOW LONG AN IMPLIED WARRANTY LASTS, AND/OR DO NOT ALLOW THE EXCLUSION OR LIMITATION OF INCIDENTAL OR CONSEQUENTIAL DAMAGES, SO THE ABOVE LIMITATIONS AND EXCLUSIONS MAY NOT APPLY TO YOU. THIS WARRANTY GIVES YOU SPECIFIC LEGAL RIGHTS, AND YOU MAY ALSO HAVE OTHER RIGHTS WHICH MAY VARY FROM STATE TO STATE.

To validate this warranty, the original purchaser must complete and return within ten (10) days of the date of purchase the warranty registration card supplied with each unit.

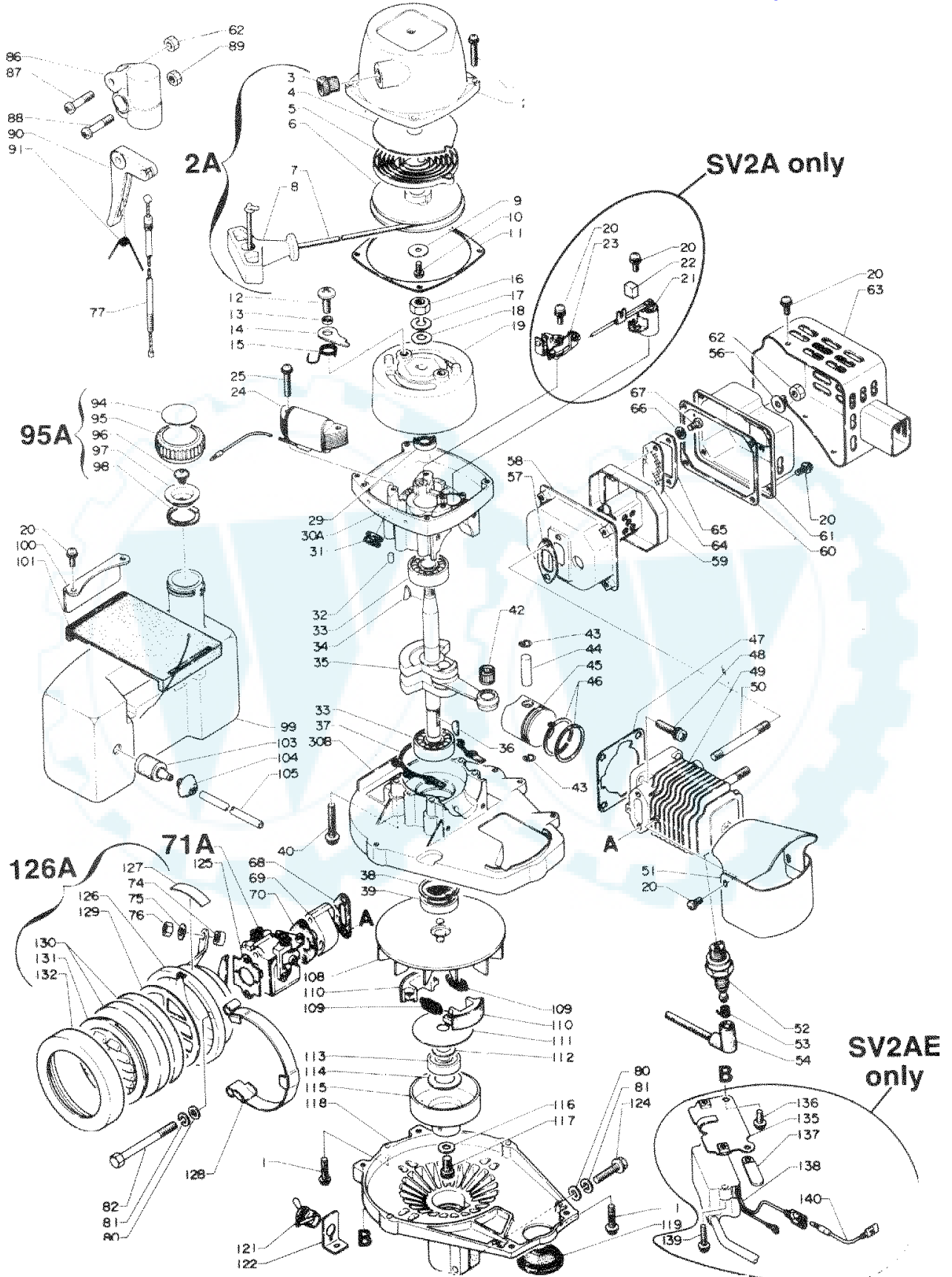
For additional information regarding this warranty or service of Little Wonder products, you may contact Echo Incorporated at 3150 MacArthur Boulevard, Northbrook, Illinois 60062. Or call Toll Free 800-323-1478, in Illinois call 312-498-1390.

### INSTRUCTIONS FOR SAFE OPERATION

1. READ CARE AND SAFETY INSTRUCTIONS CAREFULLY.
2. For fuel mixture and engine operation, read engine manual carefully. BEFORE STARTING BE SURE STOP SWITCH IS IN START POSITION.
3. DO NOT RUN ENGINE IN AN ENCLOSED SPACE. THE EXHAUST FUMES CAN BE LETHAL.

### CARE AND SAFETY

1. READ AND FOLLOW ALL INSTRUCTIONS.
2. DRESS PROPERLY - Do not wear loose clothing or jewelry. They can be caught in moving parts. Use of sturdy gloves, non-skid footwear and safety glasses is recommended.
3. STAY ALERT - Watch what you are doing and use common sense. Do not operate unit when fatigued.
4. KEEP CHILDREN AND INCAPABLE PERSONS AWAY - Do not permit children to contact unit. Keep children a safe distance from work area. Never allow a person mentally ill, under influence of alcoholic drinks or drugs, or too young in age, to operate unit.
5. WARNING - Do not fuel, refuel or check fuel system when smoking or near an open fire. Do not run the engine when fueling or refueling. Stop engine when transporting from one place to another. Do not leave engine running unattended.
6. CAUTION — Do not start or run engine indoors as poisonous carbonmonoxides are emitted.
7. Do not use the unit when electric system causes spark outside the cylinder. Check spark plug from time to time. When checking, keep plug a safe distance from cylinder to avoid burning of evaporated fuel from cylinder.
8. MAINTAIN & EXAMINE ENGINE WITH CARE - Follow maintenance instructions and do not use if parts are defective or missing from engine.
9. STORE UNIT INDOORS - When not in use store unit indoors in a sheltered area (a dry place). The engine, as well as fuel, should not be stored in a house.
10. DO NOT ATTEMPT TO REPAIR ENGINE - Have repairs made by qualified dealer or repairman. See that only identical replacement parts are used.



**SV-2A & SV-2AE**

| Key No.           | Part Number  | Description  | Qty. |
|-------------------|--------------|--|------|
| 1                 | 900242 04020 | Screw 4x20   | 9    |
| * 2A              | 177200 05920 | Starter assy (WR) consisting of item 2 thru 8                | 1    |
| 2                 | 177209 05920 | Case, starter (WR)   | 1    |
| 3                 | 177227 05330 | Guide, rope  | 1    |
| 4                 | 177221 05020 | Plate, starter   | 1    |
| 5                 | 177220 03930 | Spring, rewind   | 1    |
| 6                 | 177206 05020 | Drum, starter  | 1    |
| 7                 | 177226 03930 | Rope, starter  | 1    |
| 8                 | 177228 11130 | Grip, starter  | 1    |
| 9                 | 177214 04630 | Washer   | 1    |
| 10                | 900241 04010 | Screw 4x10   | 1    |
| 11                | 100615 04630 | Gasket, starter  | 1    |
| 12                | 177217 04630 | Screw, pawl  | 2    |
| 13                | 177247 04630 | Spacer, ratchet  | 2    |
| 14                | 177218 03930 | Pawl, starter  | 2    |
| 15                | 177234 04632 | Spring, return   | 2    |
| 16                | 900502 00008 | Nut 8 (3N)   | 1    |
| 17                | 900605 00008 | Washer, spring 8   | 1    |
| SV-2A ONLY 18     | 100143 04630 | Washer   | 1    |
| 19                | 156200 04631 | Flywheel   | 1    |
| 20                | 900242 04010 | Screw  | 13   |
| 21                | 156127 04521 | Condenser  | 1    |
| SV-2A ONLY 22     | 156134 04630 | Pad, lubrication   | 1    |
| 23                | 156101 04630 | Points, breaker  | 1    |
| 24                | 156126 04630 | Coil, ignition   | 1    |
| 25                | 900242 04025 | Screw 4x25   | 2    |
| 29                | 100212 04630 | Oilseal  | 1    |
| SV-2A ONLY 30 A&B | 100200 05020 | Crankcase set  | 1    |
| 31                | 151112 04630 | Bushing  | 1    |
| 32                | 100215 03930 | Pin, Dowel   | 2    |
| 33                | 900810 36201 | Bearing, ball 6201   | 2    |
| 34                | 100142 00310 | Key (M)  | 1    |
| 35                | 100100 05331 | Crankshaft assy  | 1    |
| 36                | 610325 02730 | Key, woodruff  | 1    |
| 37                | 100242 04630 | Gasket, crankcase  | 1    |
| 38                | 900702 00032 | Circlip (CR-32)  | 1    |
| 39                | 100212 03930 | Oilseal  | 1    |
| 40                | 900242 05030 | Screw 5x30   | 4    |
| 42                | 175012 03930 | Bearing, needle  | 1    |
| 43                | 100015 04630 | Circlip, piston pin  | 2    |
| 44                | 100013 10210 | Pin, piston  | 1    |
| 45                | 100010 05330 | Piston   | 1    |
| 46                | 100011 05330 | Ring, piston   | 2    |
| 47                | 101010 04630 | Gasket, cylinder base  | 1    |
| 48                | 900242 05020 | Screw 5x20   | 4    |
| 49                | 101011 05020 | Cylinder   | 1    |
| 50                | 101014 05330 | Stud, muffler  | 2    |
| 51                | 101514 05920 | Cover, cylinder (BLK)  | 1    |
| 52                | 159010 00330 | Plug, spark (BM-6A)  | 1    |
| 53                | 159011 00510 | Coil, spark plug cap   | 1    |
| 54                | 159012 01620 | Cap, spark plug  | 1    |
| 56                | 900603 00005 | Washer 5   | 2    |
| 57                | 145510 05020 | Gasket, muffler  | 1    |
| 58                | 145806 05120 | Muffler (A)  | 1    |
| 59                | 145807 05120 | Muffler (B)  | 1    |
| 60                | 145866 05120 | Gasket, muffler lid  | 1    |
| 61                | 145861 05920 | Lid, muffler   | 1    |
| 62                | 433020 00830 | Locknut 5  | 3    |
| 63                | 145621 05921 | Cover, muffler   | 1    |
| 64                | 145862 05120 | Screen, muffler (SAM)  | 1    |
| 65                | 145863 05120 | Holder, screen (SAM)   | 1    |
| 66                | 900610 00004 | Washer (TWA-4)   | 2    |
| 67                | 900220 04008 | Screw 4x8  | 2    |
| 68                | 130010 05020 | Gasket, carburetor   | 1    |
| 69                | 130017 05020 | Insulator  | 1    |
| 70                | 130016 06430 | Gasket, carburetor   | 1    |
| * 71A             | 123000 08430 | Carburetor (WA-59) (see carburetor assembly parts breakdown) | 1    |

| Key No. | Part Number   | Description                                  | Qty. |
|---------|---------------|--|------|
| 74      | 178021 07330  | Locknut                                      | 1    |
| 75      | 900602 00006  | Washer 6                                     | 1    |
| 76      | 900502 00006  | Nut 6 (3N)                                   | 1    |
| 77      | 178001 04520  | Cable throttle                               | 1    |
| 80      | 900600 00005  | Washer 5                                     | 3    |
| 81      | 900605 00005  | Washer, spring 5                             | 3    |
| 82      | 130021 05020  | Bolt   | 2    |
| 86      | 178024 06130  | Bracket, throttle                            | 1    |
| 87      | 178110 05330  | Screw  | 1    |
| 88      | 900220 05025  | Screw 5x25                                   | 1    |
| 89      | 900500 00005  | Nut 5  | 1    |
| 90      | 178010 05330  | Control, throttle                            | 1    |
| 91      | 178043 05230  | Spring, throttle return                      | 1    |
| 94      | 890154 03930  | Label, fuel mix                              | 1    |
| * 95A   | 131004 04520  | Cap assy fuel, consisting of 94 thru 98      | 1    |
| 95      | 131017 04930  | Cap fuel, (BLK)                              | 1    |
| 96      | -131314 00330 | Valve, check                                 | 1    |
| 97      | -131015 04520 | Holder, check valve                          | 1    |
| 98      | -131016 04930 | Gasket, fuel tank cap                        | 1    |
| 99      | 131010 05920  | Tank, fuel                                   | 1    |
| 100     | 131910 05020  | Bracket, fuel tank                           | 1    |
| 101     | 131924 05921  | Cushion                                      | 1    |
| 103     | 131205 07320  | Strainer, fuel                               | 1    |
| 104     | -132115 04920 | Grommet                                      | 1    |
| 105     | 132007 05920  | Pipe, fuel w/grommet                         | 1    |
| 108     | 101500 05020  | Fan assy, cooling                            | 1    |
| 109     | 175018 05130  | Spring, clutch                               | 2    |
| 110     | 175009 05130  | Shoe, clutch                                 | 2    |
| 111     | 175019 04630  | Plate, clutch                                | 1    |
| 112     | 175015 05020  | Washer, clutch                               | 1    |
| 113     | 900808 36000  | Bearing, ball 6000                           | 1    |
| 114     | 175044 04630  | Washer, clutch                               | 1    |
| 115     | 175010 04632  | Drum, clutch                                 | 1    |
| 116     | 175014 04630  | Washer, clutch                               | 1    |
| 117     | 900105 06010  | Bolt, h.s. 6x10                              | 1    |
| 118     | 101511 05920  | Cover, fan (WR)                              | 1    |
| 119     | 159015 04630  | Cover, plug cap                              | 1    |
| 120     | 178121 04520  | Clip   | 1    |
| 121     | 163400 02160  | Switch, ignition                             | 1    |
| 122     | 163810 05920  | Bracket, switch                              | 1    |
| 124     | 900115 05025  | Bolt 5x25                                    | 1    |
| 125     | 130016 06230  | Gasket, carburetor                           | 1    |
| 126     | 130307 05922  | Case, air cleaner                            | 1    |
| * 126A  | 130300 00761  | Air cleaner assy, consisting of 125 thru 132 | 1    |
| 127     | 890158 00760  | Label, caution                               | 1    |
| 128     | 130425 00761  | Holder, cover                                | 1    |
| 129     | 130319 00760  | Grid, air cleaner                            | 1    |
| 130     | 130310 00760  | Filter, air                                  | 2    |
| 131     | 130313 04620  | Cover, air cleaner                           | 1    |
| 132     | 130341 04620  | Holder, air cleaner                          | 1    |

**SV-2AE ONLY**

| Key No. | Part Number  | Description            | Qty. |
|---------|--------------|------------------------|------|
| 19      | 156800 06331 | Flywheel               | 1    |
| 24      | 156627 09820 | Coil, exciter          | 1    |
| 31      | 156114 06330 | Bushing                | 1    |
| 135     | 159310 09820 | Bracket, ignition coil | 1    |
| 136     | 900242 05010 | Screw 5 x10            | 1    |
| 137     | 159113 23630 | Clip                   | 1    |
| 138     | 156601 09820 | C. D. Ignition module  | 1    |
| 139     | 900242 04018 | Screw 4x18             | 2    |
| 140     | 162021 09820 | Lead, ground           | 1    |

\* INDICATES ASSEMBLY

**SERVICE INFORMATION**

**Specifications**

| MODEL              |                 | SV-2A   | SV-2AE                       |
|--------------------|-----------------|---|------------------------------|
| Dry Weight         | kg (lb.)        | 3.2 (7.0)   | 3.2 (7.0)                    |
| Engine             |                 | KIORITZ, Air-cooled, two-stroke, single cylinder  |                              |
| Rotation           |                 | Counterclockwise viewed from PTO                  |                              |
| Displacement       | cc (cu. in.)    | 21.2 (1.294)                                      | 21.2 (1.294)                 |
| Bore x Stroke      | mm (in.)        | 32.2 (1.268) x 26.0 (1.024)                       | 32.2 (1.268) x 26.0 (1.024)  |
| Compression ratio  |                 | 6.5:1   | 6.5:1                        |
| Carburetor         |                 | WALBRO diaphragm, model WA type                   |                              |
| Ignition           |                 | mechanical breaker type                           | electronic ignition type CDI |
| Starter            |                 | automatic rewind type                             |                              |
| Fuel               |                 | Premixed two-stroke fuel                          |                              |
| Mixing ratio       |                 | 20:1 or a ratio approved by KIORITZ/ECHO          |                              |
| Gasoline           |                 | Regular type                                      |                              |
| Oil                |                 | ECHO air-cooled two-stroke oil or approved equiv. |                              |
| Fuel tank capacity | ℓ (US. fl. oz.) | 0.5 (16.9)  | 0.5 (16.9)                   |
| Clutch             |                 | Centrifugal type                                  |                              |
| Exhaust system     |                 | Spark arrester type                               |                              |
| Air cleaner        |                 | Dual element                                      |                              |

**Technical Data**

| MODEL                          |                          | SV-2A  | SV-2AE                |
|--------------------------------|--------------------------|--|-----------------------|
| Spark plug gap                 | mm (in.)                 | 0.6-0.7 (0.024-0.028)  | 0.6-0.7 (0.024-0.028) |
| Pole core gap                  | mm (in.)                 | 0.3-0.4 (0.012-0.016)  | 0.3-0.4 (0.012-0.016) |
| Ignition timing                | BTDC                     | 30 BTDC  | 30 BTDC               |
| Primary coil resistance        | Ω                        | 5-6Ω   | 0.2Ω                  |
| Secondary coil resistance      | kΩ                       | 5-6kΩ  | 1.5-3kΩ               |
| Excitor coil resistance        | Ω                        | —  | 120-200kΩ             |
| Minimum secondary voltage      | kV                       | 14kV   | 15kV                  |
| High speed needle (H needle)   |                          | 1 turn open ± ¼ turn   | 1 turn open ± ¼ turn  |
| Idle mixture needle (L needle) |                          | 1 turn open ± ¼ turn   | 1 turn open ± ¼ turn  |
| Idle speed adjusting screw     |                          | 2 (Turn until it lightly touches throttle shaft and forward 2 turns) |                       |
| Idling speed                   | rpm                      | 2700-3000  | 2500-3000             |
| Operating speed                | rpm                      | 5000-8000  | 5000-8000             |
| Compression pressure           | kg/cm <sup>2</sup> (psi) | 6.0 (85)   | 6.0 (85)              |
| Contact breaker gap            | mm (in.)                 | .3-.4 (.012-.016)  |                       |
| Condensor capacity             |                          | .18-.22uF  |                       |

**WARNING:** For SV-2AE only — When testing for spark, use proper testing equipment only. Failure to do so may cause permanent damage to CDI Module.

**ADJUSTING THE CARBURETOR**

The carburetor has been adjusted at the factory for optimum performance. Should the carburetor require adjusting, this adjustment should be done by a qualified servicing dealer or mechanic.

To adjust the carburetor, proceed as follows:

- Low-speed needle valve (L) ..... 1 ± ¼ turn
- High-speed needle valve (H) ..... 1 ± ¼ turn

Turn the corresponding adjusting screw lightly clockwise to fully closed position and return the screw by the number of turns indicated above.

Lower the throttle lever and idle the engine for 3-5 minutes to cool it off. Then, stop the engine by depressing the stop button.

Stop button and the engine are connected by a grounding lead wire, to ensure the functioning of the stop button. If the stop button doesn't work properly, check the grounding wire connection.

**STORING**

If unit is to be stored for a long period of time, drain fuel completely from tank. Fuel stored under the most ideal conditions may start to go stale in 30 days. Stale fuel has a high gum content which can clog carburetor and restrict the fuel flow.

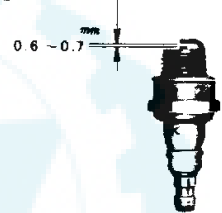
Start engine and allow to run until it stops. Choke and restart engine to make sure all fuel has been used from the carburetor. This prevents formation of gum deposits. Remove the spark plug. Pour about a teaspoonful of clean oil through the spark plug hole into the combustion chamber. Pull the starter handle slowly at least twice. This will coat the interior of the combustion chamber with oil. Clean, gap, and replace spark plug.

**IGNITION SPARK PLUG**

Clean or replace the plug if fouled with oily black deposits. Replace the plug if the center electrode is rounded at the end, or if the ground electrode is worn. Adjust the gap 0.6-0.7mm (.024-.028"). CAUTION — Do not over tighten the plug. Correct torque = 18-22 lbs. ft.

**CAUTION**

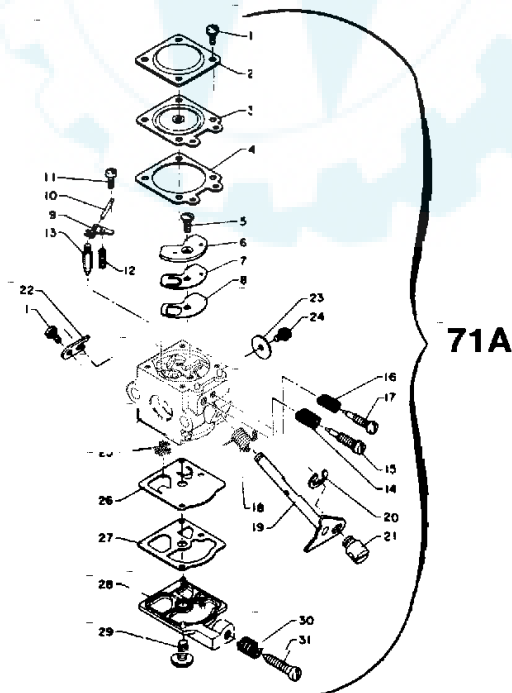
**DO NOT ATTEMPT TO REMOVE THE PLUG FROM A HOT ALUMINUM CYLINDER HEAD IN ORDER TO AVOID POSSIBLE DAMAGE TO THE THREADS.**



**AIR FILTER**

The performance, lubrication and temperature of the two stroke engine is seriously affected by a choked air filter. It is strongly recommended, therefore, that the filter should be cleaned every time the unit is used. Dust and dry dirt are readily removed from the filter element which can be washed in kerosene if necessary to remove oil accumulation.

**Carburetor assembly SV-2A & SV-2AE**



| Key No. | Part Number   | Description                                | Qty. |
|---------|---------------|--|------|
| 71A.    | 123000 08430  | Carburetor (WA-59) consisting of 1 thru 31 | 1    |
| 1       | -123144 03930 | Screw                                      | 5    |
| 2       | -123142 03930 | Cover, m. diaphragm                        | 1    |
| 3       | -123141 03930 | Diaphragm, metering                        | 1    |
| 4       | -123140 03930 | Gasket, m. diaphragm                       | 1    |
| 5       | -123167 05230 | Screw, circuit plate                       | 1    |
| 6       | -123166 03930 | Plate, circuit                             | 1    |
| 7       | -123165 03930 | Diaphragm, circuit                         | 1    |
| 8       | -123164 03930 | Gasket, circuit plate                      | 1    |
| 9       | -123123 03930 | Lever, metering                            | 1    |
| 10      | -123138 03930 | Pin, metering lever                        | 1    |
| 11      | -123139 03930 | Screw, m. lever pin                        | 1    |
| 12      | -123122 03930 | Spring, meter. lever                       | 1    |
| 13      | -123137 03930 | Valve, inlet needle                        | 1    |
| 14      | -123119 03930 | Spring, needle                             | 1    |
| 15      | -123120 06530 | Needle, high speed                         | 1    |
| 16      | -123121 03930 | Spring, needle                             | 1    |
| 17      | -123118 04420 | Needle, idle                               | 1    |
| 18      | -123113 03930 | Spring, throttle return                    | 1    |
| 19      | -123117 05020 | Shaft, throttle                            | 1    |
| 20      | -123127 10630 | Retaining, spring                          | 1    |
| 21      | -123172 04320 | Swivel                                     | 1    |
| 22      | -123127 03930 | Clip, throttle shaft                       | 1    |
| 23      | -123116 05230 | Valve, throttle                            | 1    |
| 24      | -123114 03930 | Screw, throttle valve                      | 1    |
| 25      | -123126 03930 | screen, inlet                              | 1    |
| 26      | -123112 03930 | Diaphragm, fuel pump                       | 1    |
| 27      | -123125 03930 | Gasket, fuel pump                          | 1    |
| 28      | -123124 05020 | Cover, fuel pump                           | 1    |
| 29      | -123110 03930 | Screw, pump cover                          | 1    |
| 30      | -123133 11130 | Spring, idle adjust                        | 1    |
| 31      | -123134 06530 | Screw, idle adjust                         | 1    |