



LITTLE WONDER®

DIVISION OF SCHILLER-PFEIFFER, INCORPORATED

P.O. BOX 38, 1028 STREET ROAD
AREA CODE 215-357-5110

SOUTHAMPTON, PA 18966 U.S.A.
FAX NO 215-357-8045



INSTRUCTIONS AND REPAIR PARTS FOR THE LITTLE WONDER CAT. No. 1222E - (16") AND CAT. No. 2222E - (30") GAS POWERED HEDGE TRIMMERS



WARNING:

TO GUARD AGAINST INJURY, BASIC SAFETY PRECAUTIONS SHOULD BE OBSERVED, INCLUDING THE FOLLOWING:

ASSEMBLY INSTRUCTIONS

Remove handle and hedge trimmer from carton. On 16" and on 30" models, screw handle into handle adapter located on frame bar in threaded hole provided. Handle should be sufficiently tightened to insure that at least three or four clicks are felt on locking notches.

Install gasoline engine to hedge trimmer by first aligning the hex head drive on the hedge trimmer with the hex socket in the gasoline engine and place engine over one inch (1") diameter stem of hedge trimmer and secure with 5/16" hex socket wrench or flat screw driver.

gap) before securing with 5/16" socket (see figure #1). Also be sure throttle cable is as shown in illustration (see figure #1). Remove the two 1/4"-20 nuts preassembled to handle and place handle on hedge trimmer. Insert the two 1/4"-20 handel bolts into 1/4 inch holes and half round slot provided at rear of hedge trimmer housing and secure the handle with the 1/4"-20 nuts and hex head bolts provided. For engine operating instructions, read engine manual carefully. Make certain that you use the proper gasoline and air-cooled engine oil mix. **DO NOT USE PLAIN GASOLINE WITH THIS TWO-CYCLE ENGINE.**

CARE AND SAFETY

1. READ AND FOLLOW ALL INSTRUCTIONS.
2. DRESS PROPERLY — Do not wear loose clothing or jewelry. They can be caught in moving parts. Use of sturdy gloves, non-skid footwear and safety glasses is recommended.
3. STAY ALERT — Watch what you are doing and use common sense. Do not operate trimmer when fatigued.
4. DANGER — CUT HAZARD — KEEP HANDS AWAY FROM BLADES — Keep both hands on handles when power is on. Do not attempt to remove cut material nor hold material to be cut when blades are moving. Make sure engine is shut off when clearing jammed material from blades. Do not grasp the exposed cutting blades on cutting edges of trimmer. Do not over-ride safety features in any way.

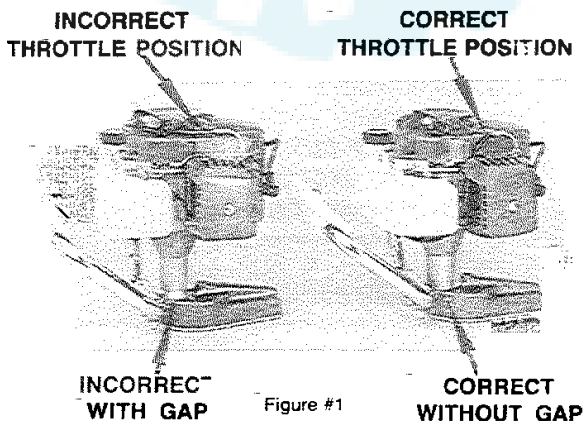


Figure #1

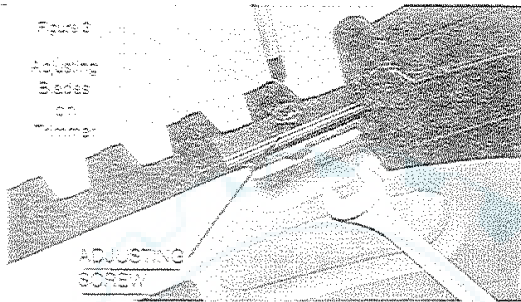
Make certain engine is mounted correctly (without

Important (Turn to Pages 2 & 4)

ADJUSTMENT FOR HEDGE TRIMMER BLADES

The care and adjustment of the blades is most important to the efficient operation of the trimmer and especially to the long life of the engine.

- 1 Place trimmer in vise as shown in figure #3 clamping on frame bar with blades pointing away from you.



2. Using a 7/16" wrench, loosen all blade locknuts and unscrew the large head screws by two turns.
3. Starting with the screw nearest the gear housing, tighten the screw until the blade guard can just be moved with finger pressure and a 0.0015" (1½ thou.) feeler blade just slips under the blade guard. Tighten the locknuts while holding the screw stationary in its correctly adjusted position.
4. Repeat step 3 on the screws in turn until all are correctly adjusted.

NOTE — Correct blade adjustment can only be achieved on clean, oiled blades.

5 YEAR LIMITED SERVICE & WARRANTY POLICY GAS HEDGE TRIMMER

All "Little Wonder" products are guaranteed against defects in material and workmanship for a period of FIVE YEARS when used for RESIDENTIAL SERVICE, or COMMERCIAL SERVICE. Any "Little Wonder" Gas Hedge Trimmer or part found to be defective within the warranty period is to be returned to our factory at Southampton, Pennsylvania.

Engines for gas powered products are warranted separately by the engine manufacturer. Therefore, there are no warranties made, expressed or implied, for engines for gas powered products by "Little Wonder".

Transportation charges on parts and units submitted for replacement under this warranty must be borne by purchaser.

THIS WARRANTY shall not be effective if the product has been the subject of misuse, negligence or accident or if the product has been repaired or altered outside of our Southampton factory in any respect which affects its condition or operation.

"Little Wonder" shall not be liable for any special indirect or consequential damages arising from defective equipment. Any implied warranty, including merchantability of fitness for a particular purpose, shall not extend beyond the written warranty period.

THIS WARRANTY shall be effective only providing enclosed card is properly filled out and returned to "Little Wonder, Div. of Schiller-Pfeiffer, Inc." at time of purchase.



NEW LITTLE WONDER STORAGE SHEATH

Cat. No. 1100DE

(Figure 4)

P/N 384-3 5M 9/92

PAI: No. 16-51

DESCRIPTION

16-52

303A

16-54A

16-93

30-1

16" Outside Blade complete with connecting rod and drive pin

16" Inside Blade complete with drive pin

16" Frame Bar

Large Head Screw 1/4-28 x 11/16" LG.

Blade Guard

30" Outside Blade complete with connecting rod and drive pin

30" Inside Blade complete with drive pin

30" Frame Bar

Flat Head Machine Screw 1/4-28 x 1/2" LG

Flange Nut 1/4-28

Handle Adapter

Side Handle

Cover Plate Screw #6-32 x 5/16 LG (set of 6)

Cover Plate

Gasket

Eccentric Gear

Connecting Link

Connecting Rod Spacer

Bushing Lower

Cover Plate Pin

Eccentric Shaft

Wear Strip

Felt

Gear Housing

Bushing-Upper

Washer 1/2" I.D.

Pinion

Handle

Nut Acorn 1/4-20

Handle Clamp

Hex Head Cap Screw 1/4-20 x 1 1/2" LG.

Grip-Thru

Cable Retainer

Retaining Ring

Throttle Lever

Throttle Cable

SV-4B Engine

Cap Plug

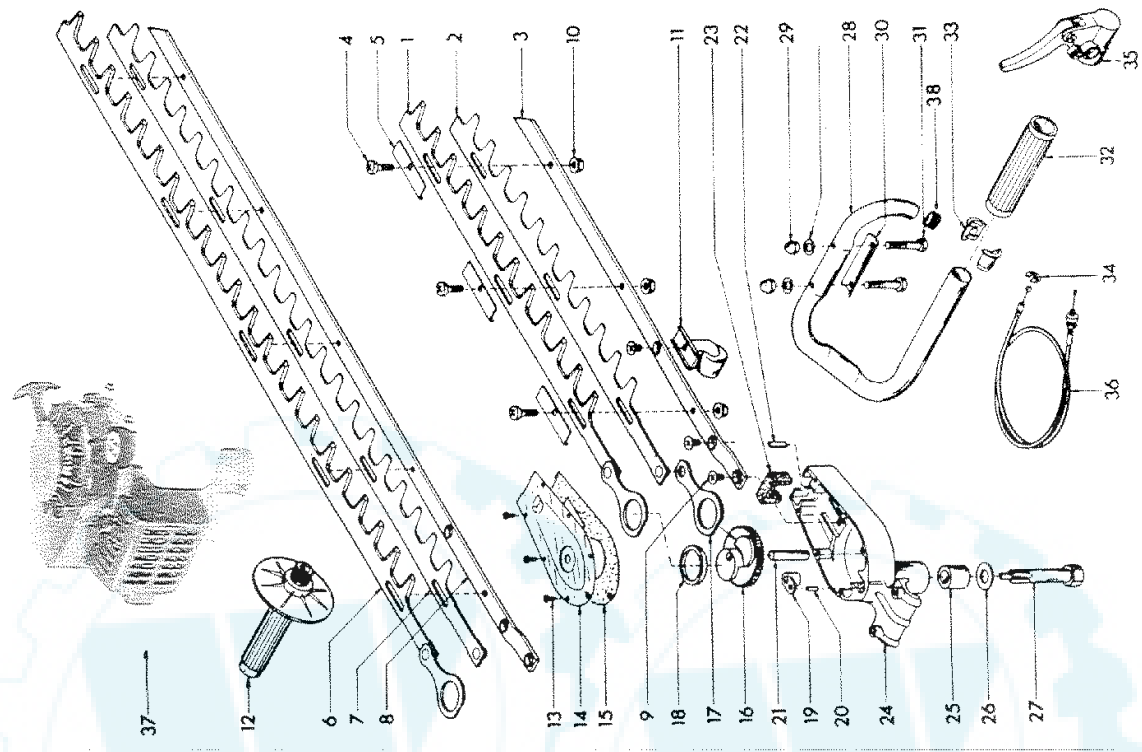


Figure #2

7 30-2

8 30-3

9 16-55

10 16-54B

11 325

12 D16-73

13 16-81

14 316

15 319

16 372

17 16-64

18 16-85

19 373

20 16-80

21 16-61

22 D16-56F

23 314

24 370

25 374

26 375

27 371

28 376

29 395

30 377

31 378

32 383

33 379

34 413

35 382

36 178002-11520

37 380E4B

38 376-1

CAUTION — BLADES WILL COAST AFTER UNIT HAS BEEN TURNED OFF OR AFTER THROTTLE HAS BEEN RELEASED.

5. **KEEP CHILDREN AND INCAPABLE PERSONS AWAY** — Do not permit children to contact trimmer. Keep children a safe distance from work area. Never allow a person mentally ill, under influence of alcoholic drinks or drugs, or too young in age, to operate the hedge trimmer.
6. **USE TRIMMER PROPERLY** — Use only for trimming the type of shrub, growth, etc. described in the operating instructions. Do not abuse trimmer.
7. **DON'T OVERREACH OR STAND ON UNSTABLE SUPPORT** — Keep good footing and balance at all times.
8. **WARNING** — Do not fuel, refuel or check fuel system when smoking or near an open fire. Do not run the engine when fueling or refueling. Stop engine when transporting from one place to another. Do not leave engine running while hedge trimmer is unattended.
9. **CAUTION** — Do not start or run engine indoors as poisonous carbonmonoxides are emitted.
10. **MULTIPLE OPERATORS** — Keep a safe distance between two or more operators when working together simultaneously.
11. Check spark plug from time to time. When checking, keep plug a safe distance from cylinder to avoid burning of evaporated fuel from cylinder.
12. **MAINTAIN & EXAMINE TRIMMER WITH CARE** — Follow maintenance instructions given in manual. Do not use the hedge trimmer if any component parts have become damaged or are missing.
13. **STORE TRIMMER INDOORS** — When not in use, store trimmer indoors in a sheltered area (a dry place) where not accessible to children. As illustrated in Fig. #4, Little Wonder Storage Sheath (Cat. No. 1100DE) filled with a light #10 oil is recommended to prevent blade separation which will affect cutting ability. The hedge trimmer, as well as fuel, should not be stored in a house.
14. **DO NOT ATTEMPT TO REPAIR TRIMMER** — Have repairs made by qualified dealer or repairman. See that only original equipment Little Wonder parts are used.

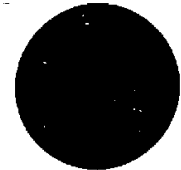
15. **BEFORE EACH USE INSPECT TO BE SURE HANDLES, GUARDS, AND FASTENERS ARE SECURE AND IN PLACE:**

LUBRICATION AND MAINTENANCE

1. A few drops of light #10 oil should be placed at each adjusting screw approximately every four hours of normal operation.
2. To obtain trouble free trimming, it is necessary to remove gum that collects on the blades. This is best done by keeping trimmer in storage sheath filled with a light #10 oil, after each cutting. Blades must be clean before they can be adjusted.
3. When blades are replaced, or any other time that the bottom cover plate is removed, grease level should be checked for proper amount (approximately $\frac{3}{4}$ full in area of gears) and a new gasket should be used to insure proper seating of cover plate. Use only Lubrico M3-3K-9K (P/N 16-78A) grease in the gear housing. (See Accessory Items.)

INSTRUCTIONS FOR SAFE OPERATION

1. **READ CARE AND SAFETY INSTRUCTIONS CAREFULLY.**
2. For fuel mixture and engine operation, read engine manual carefully. **BEFORE STARTING - BE SURE STOP SWITCH IS IN RUN POSITION.**
3. Hold trimmer firmly, squeeze throttle to accelerate engine, tilt trimmer so cutting tooth is angled slightly toward the hedge or shrub and proceed to cut. The unit is designed to cut any type of hedge or shrub; however,
THICKNESS OF CUT SHOULD NOT EXCEED 1" INCH IN DIAMETER.



CAUTION

BE CAREFUL OF HIDDEN METALLIC OBJECTS in the hedge or shrubbery which may damage trimmer.