

PARTS LIST

BRUSHCUTTERS

BC250

NOTE :

1. Use KOMATSU ZENOAH genuine parts specified in the parts list for repair and/or replacement.
2. KOMATSU ZENOAH does not warrant the machines, those which have been damaged by the use of any parts other than those specified by the company.
3. When placing orders of parts for repair and/or replacement, check if the model name and the serial number are suitable to those specified in the parts list, then use parts number described in the parts list.
4. The contents described in the parts list may change due to improvement.
5. The parts for the machine shall be supplied within ten (10) years after the machine is discontinued.
[It is possible that some specific parts may be subject to change of their delivery term and list price within the limit of ten (10) years after the machine is discontinued. And it is also possible that some parts may be available even after the limit of ten (10) years.]

Fig.1 CUTTER GROUP

Key#	PART NUMBER	DESCRIPTION	Q'TY /UNIT	NOTE	Key#	PART NUMBER	DESCRIPTION	Q'TY /UNIT	NOTE
1	848JAC5820	PIPE COMP.	1		54	5548-73310	• TUBE	1	
2	848JA358B0	• BUSH	2		55	848JBD90R0	LABEL, name	1	
3	848JAC58C0	• LINER	1		56	T3110-14000	HANDLE ASSY	1	
4	848JA358D0	• SEAL	1		57	T3110-14110	• HANDLE	1	
5	848JA358E0	SHAFT	1		58	0263-90530	• SCREW	4	
6	848JBD6100	GEARCASE ASSY	1		59	6425-12552	PLATE	1	
7	848B2062A0	• GEARCASE	1		60	T3195-24103	GUARD COMP.	1	
8	06004-06000	• BEARING	1		61	T3002-24121	• BLADE	1	
9	06000-00626	• BEARING	1		62	T4960-51431	• SCREW TORX	1	
10	04065-02612	• RING	1		63	3320-15310	• NUT	1	
11	T3195-13210	• SHAFT	1		64	T3338-24120	CLAMP	1	
12	T3300-93250	• GEAR	1		65	01252-30630	BOLT	2	
13	848JA361D0	• PINION	1						
14	06001-00609	• BEARING	1		69	PT104 Plus	TAP HEAD COMP.	1	
15	3210-13330	• RING	1		70	T3189-15112	• CASE	1	
16	04065-02412	• RING	1		71	T3189-15191	• EYELET	2	
17	0225-00610	• BOLT	1		72	T3189-15132	• COVER	1	
19	0225-00410	• BOLT	1		73	T3189-15142	• CORD HOLDER	1	
20	01252-30520	• BOLT TORX	1		74	T3189-15160	• SPRING	1	
21	T3300-91340	• HOLDER(A)	1		75	T3189-15180	• CORD	1	
22	01252-30512	• BOLT TORX	1		76	T3300-17100	HARNES ASSY	1	
25	T3110-18000	GRIP ASSY	1		77	T3300-17202	HANGER COMP.	1	
26	K2300-000240	• GRIP (R)	1		78	0263-90520	• SCREW	1	
27	K2300-000230	• GRIP (L)	1		79	T3113-91000	TOOL SET	1	
28	K3200-000370	• CLAMP (A)	2		80	1030-91340	• DRIVER	1	
29	K3300-000010	• PLATE (A)	1		81	3144-91160	• SOCKET	1	
30	K3300-000020	• PLATE (B)	1		82	09007-00425	• WRENCH	1	
31	K5100-000240	• COLLAR	1		83	09007-00528	• WRENCH	1	
32	K5100-000220	• SPRING	1		84	3540-91110	• BAR	1	
33	K2300-000260	• SAFETY LEVER	1						
34	K2300-000250	• THROTTLE LEVER	1						
35	K3200-000380	• CLAMP (B)	1						
36	K5100-000230	• SPRING	1						
37	K5100-000210	• SPRING	1						
38	K2300-000270	• PLATE	1						
39	B1122-C2910H	• SCREW	1						
40	K2300-000280	• SWITCH	1						
41	K5200-000090	• CORD	1						
42	K5100-000270	• CABLE COMP.	1						
	_____	•• THROTTLE CABLE	1						
	_____	•• SLEEVE	1						
43	K2300-000390	• LID	1						
44	B1176-090530	• SCREW	4						
45	B1181-04054506	• NUT	4						
51	5548-83000	CABLE ASSY	1						
52	5548-83100	• CABLE COMP.	1						
53	5548-73200	• CORD COMP.	1						

BC250

Fig.2 ENGINE GROUP

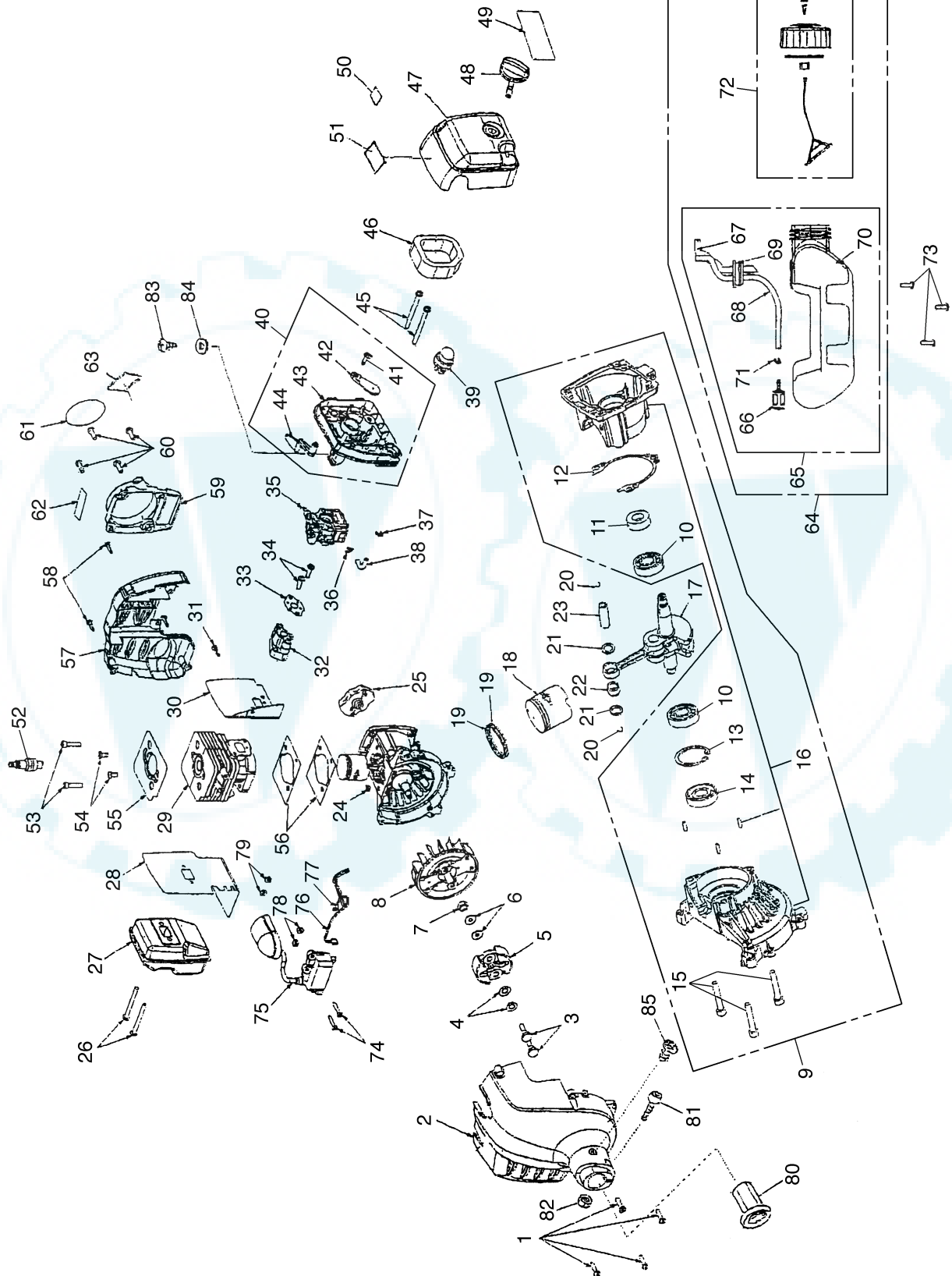


Fig.2 ENGINE GROUP

Key#	PART NUMBER	DESCRIPTION	Q'TY /UNIT	NOTE	Key#	PART NUMBER	DESCRIPTION	Q'TY /UNIT	NOTE
1	6634401	SCREW	4		51	9506011	DECAL(caution)	1	
2	3075406	FRONT HOUSING	1		52	8714402	SPARK PLUG	1	
3	6635301	SCREW CLUTCH	2		53	6634201	CAP SCREW	2	
4	6969601	WASHER CURVED	2		54	6635102	SCREW TORX	2	
5	3075603	CLUTCH ASSY	1		55	6300221	PLATE FIN	1	
6	6969501	WASHER PLAIN	2		56	9070901	GASKET CYLINDER	2	
7	6968901	NUT	1		57	5947001	REAR HOUSING	1	
8	6457403	ROTOR	1		58	6656301	SCREW TORX	3	
9	4309501	CRANKCASE&SHAFT ASSY	1		59	3075304	RECOIL ASSY	1	
10	6968501	• BEARING	2		60	6635101	SCREW TORX	4	
11	5987501	• SEAL	1		61	9506401	DECAL STARTER	1	
12	9071301	GASKET CASE	1		62	9506010	DECAL(E Start)	1	
13	6968401	• RING	1		63	9509001	DECAL(EMISSION)	1	
14	5687401	• SEAL	1		64	3075804	TANK&CAP ASSY	1	
15	6634801	• SCREW	3		65	3075705	• TANK ASSY	1	
16	3075003	• CRANKCASE ASSY	1		66	3075904	•• FILTER	1	
17	3090101	CRANKSHAFT ASSY	1		67	5687901	•• PIPE RETURN	1	
18	6457303	PISTON	1		68	5688001	•• PIPE FUEL	1	
19	6969001	RING	2		69	5687801	•• TANK GROMMET	1	
20	6969101	CLIP RING	2		70	5835901	•• TANK	1	
21	6968701	WASHER	2		71	6976501	•• CLIP	1	
22	6997001	NEEDLE BEARING	1		72	3075803	• CAP ASSY	1	
23	6230101	WRIST PIN	1		73	6635401	BOLT TORX	3	
24	6968801	KEY	1		74	6634901	BOLT TORX	2	
25	4300401	PULLEY ASSY	1		75	2917803	COIL&BOOT ASSY	1	
26	6634701	BOLT MAFFLER	2		76	2914301	LEAD ASSY(BLACK)	1	
27	3074802	MUFFLER & arrester	1		77	2914302	LEAD ASSY(RED)	1	
28	6300206	MUFFLER GASKET	1		78	5946201	SPACER	2	
29	6457003	CYLINDER	1		79	6996901	WASHER	2	
30	9071102	GASKET INSULATOR	1		80	848EU053D0	CUSHION	1	
31	6634502	SCREW TORX	1		81	01252-30630	BOLT	1	
32	5994702	INSULATOR	1		82	1565-12140	NUT	1	
33	9071103	GASKET CABURETOR	1		83	2630-31950	SCREW	1	
34	6634402	SCREW TORX	2		84	1484-86280	WASHER	1	
35	3074502	CARBURETOR	1		85	5883-32160	SCREW	1	
36	6970001	CLIP HOSE	1						
37	6969901	CLIP HOSE	1						
38	5688002	PLASTIC RUBBER TUBING	1						
39	3078001	PRIMER ASSY	1						
40	3097402	CHOKE LEVER&PLATE ASSY	1						
41	6634501	• SCREW TORX	1						
42	5994601	• CHOKE PLATE	1						
43	4315001	• CARBURETOR PLATE	1						
44	5945801	• CHOKE LEVER	1						
45	6634601	BOLT CARBURETOR	2						
46	5687301	ELEMENT	1						
47	3099904	COVER ASSY	1						
48	5946101	KNOB	1						
49	9506501	DECAL	1						
50	9506009	DECAL(To Start)	1						

www.ersatzteil-service.de

www.ersatzteilplan.de



ZENOAH
KOMATSU

KOMATSU ZENOAH CO.

1-9 Minamidai, Kawagoe, Saitama, 350-1192 Japan

PRINTED IN JAPAN

Ihr Ersatzteilspezialist im Internet

PRINTED ON RECYCLED PAPER
IMPRIMÉ SUR PAPIER RECYCLÉ
GEDRUCKT AUF RECYCLING PAPIER
STAMPATO SU CARTA RICICLATA
IMPRESO EN PAPEL RECICLADO