

PARTS LIST

CHAIN SAW

G3300
G3300EZ

NOTE :

1. Use KOMATSU ZENOAH genuine parts specified in the parts list for repair and/or replacement.
2. KOMATSU ZENOAH does not warrant the machines, those which have been damaged by the use of any parts other than those specified by the company.
3. When placing orders of parts for repair and/or replacement, check if the model name and the serial number are suitable to those specified in the parts list, then use parts number described in the parts list.
4. The contents described in the parts list may change due to improvement.
5. The parts for the machine shall be supplied within ten (10) years after the machine is discontinued.
[It is possible that some specific parts may be subject to change of their delivery term and list price within the limit of ten (10) years after the machine is discontinued. And it is also possible that some parts may be available even after the limit of ten (10) years.]

G3300

Fig.1 POWER UNIT

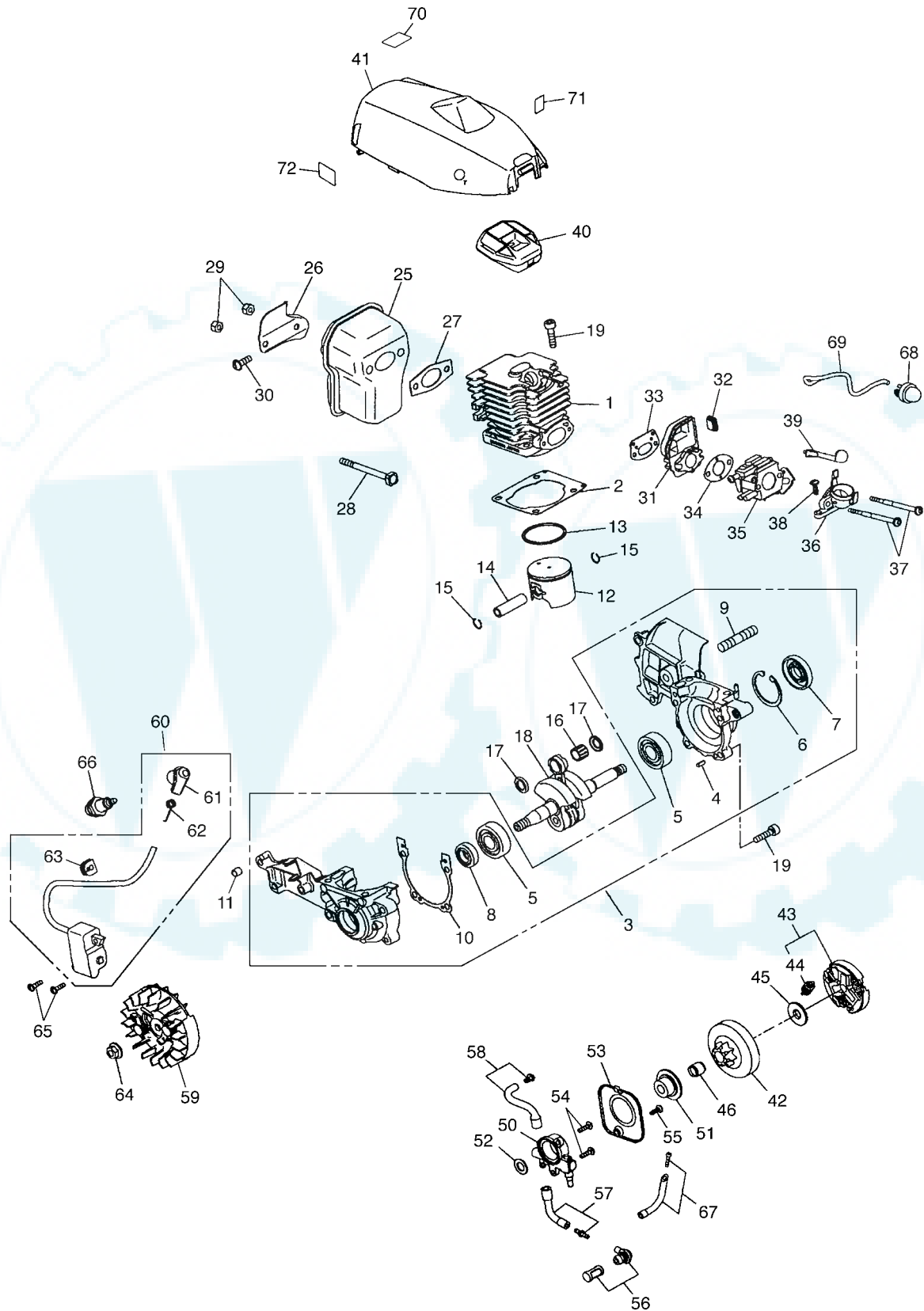


Fig.1 POWER UNIT

Key#	PART NUMBER	DESCRIPTION	Q'TY /UNIT	NOTE	Key#	PART NUMBER	DESCRIPTION	Q'TY /UNIT	NOTE
1	848C3012A1	CYLINDER	1		59	848C357111	ROTOR COMP.	1	
2	T2200-14210	GASKET, cyl	1		60	848C357121	COIL ASSY	1	
3	848C302101	CASE ASSY	1		61	2850-72110	• CAP	1	
4	2629-21130	• PIN	3		62	1400-72121	• SPRING	1	
5	06030-06201	• BEARING	2		63	5500-72130	• GROMMET	1	
6	04065-03212	• SNAPRING ø32	1		64	1650-43230	NUT M8xP1.0	1	
7	2169-21210	• SEAL	1		65	2670-55410	SCREW M4xL14 T20	2	
8	8488AC3210	• SEAL	1		66	3699-90032-10	SPARK PLUG	1	
9	2616-21230	• STUD	1		67	T2100-31500	PIPE COMP.	1	
10	848C3021D1	• GASKET	1		68	2850-81900	PUMP	1	
11	8488Y56000	SPACER	1		69	2850-82611	PIPE	1	
12	T2200-41110	PISTON	1		70	848C3590F0	LABEL, caution	1	
13	T2102-41210	RING	1		71	848C3090E0	LABEL, choke	1	
14	T2200-41310	PIN	1		72	T2990-21120	LABEL	1	
15	3310-41320	RING	2						
16	3310-41410	BEARING	1						
17	1650-41510	WASHER	2						
18	T2200-42000	SHAFT COMP.	1						
19	4820-13180	BOLT TORX M5xL20 T27	8						
25	T2200-15110	MUFFLER	1						
26	T2200-15310	STAY	1						
27	T2100-15210	GASKET	1						
28	T2100-15220	BOLT	2						
29	2850-15230	NUT	2						
30	8488151400	SCREW M5xL14 T27	1						
31	848C3014A1	INSULATOR	1						
32	T2200-31120	CAP	1						
33	848C3014B1	GASKET, in	1						
34	3330-14121	GASKET,carb	1						
35	848C308101	CARBURETOR ASSY	1	WT					
36	848C3082A1	MANIFOLD	1						
37	2867-82210	BOLT M4x70	2						
38	8488251601	SCREW TP5(P-tight)xL16 T27	1						
39	848C3082F2	ROD CHOKE	1						
40	T2200-83100	CLEANER	1						
41	848C3031A2	COVER	1						
42	T2220-51110	DRUM 3/8x6T ø60	1						
43	848C305121	CLUTCH	1						
44	848C3051E2	• SPRING	3						
45	T2041-51210	PLATE	1						
46	3310-51310	BEARING	1						
50	2841-55112	OIL PUMP	1						
51	2850-55121	WORM	1						
52	2850-55211	WASHER	1						
53	T2200-55610	COVER	1						
54	2670-55410	SCREW M4xL14 T20	2						
55	2670-54630	SCREW TP4(B-tight)xL12 T20	1						
56	T2100-23200	FILTER COMP.	1						
57	848C306731	PIPE IN COMP.	1						
58	T2200-21400	PIPE OUT COMP.	1						

G3300

Fig.2 POWER UNIT

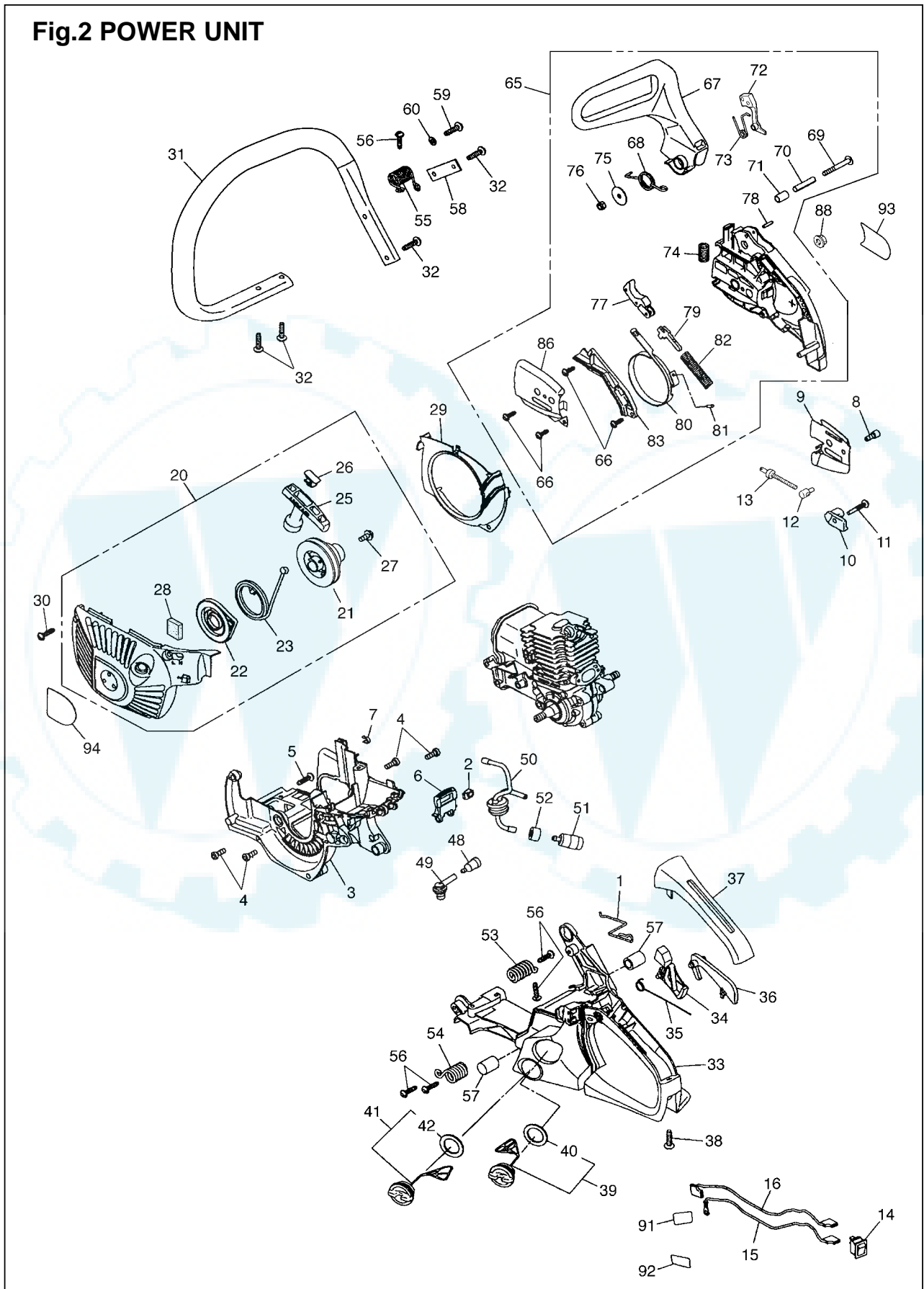


Fig.2 POWER UNIT

Key#	PART NUMBER	DESCRIPTION	Q'TY /UNIT	NOTE	Key#	PART NUMBER	DESCRIPTION	Q'TY /UNIT	NOTE
1	848C3082H3	ROD	1		59	8488251601	SCREW TP5(P-tight)xL16 T27	1	
2	848C3082G2	GROMMET	1		60	01640-20508	WASHER	1	
3	848C3025A1	CASE	1		65	848C355402	BRAKE ASSY	1	
4	8488151400	SCREW M5xL14 T27	4		66	2670-54630	• SCREW TP4(B-tight)xL12 T20	4	
5	8488251911	SCREW TP5(P-tight)xL19 T27	1		67	848C3054A2	• GUARD	1	
6	848C3025C2	KNOB	1		68	2850-54120	• SPRING	1	
7	848C3025D0	CLIP	1		69	2850-54130	• SCREW	1	
8	T2200-21230	BOLT	1		70	2850-54140	• SPACER	1	
9	848C306611	PLATE	1		71	2850-54211	• SPACER	1	
10	848C3066F1	CATCHER	1		72	2851-54222	• WEIGHT	1	
11	8488251911	SCREW TP5(P-tight)xL19 T27	1		73	2872-54230	• SPRING	1	
12	3310-53320	NUT	1		74	2851-54270	• SPRING	1	
13	8488353900	SCREW	1		75	3330-75411	• WASHER	1	
14	2850-74102	SWITCH ASSY	1		76	3310-53331	• NUT	1	
15	848C3072C1	CORD EARTH	1		77	2851-54301	• LEVER COMP.	1	
16	848C3072B1	CORD SWITCH	1		78	2851-54350	• ROLLER	1	
20	848C357502	STARTER ASSY	1		79	2670-54411	• ARM	1	
21	848C3575C1	• REEL	1		80	T2200-54510	• BAND	1	
22	2841-75300	• SPRING COMP.	1		81	3356-24140	• ROLLER	1	
23	T2044-75410	• ROPE ø3	1		82	2670-54610	• SPRING	1	
25	1400-75170	• KNOB	1		83	848C3053C2	• COVER	1	
26	T2044-75420	• KNOB CAP	1		86	848C3066C1	• PLATE(B)	1	
27	T1812-75150	• SCREW M5xL12	1		88	3350-53410	NUT	1	
28	848C3074B0	• CUSHION	1		91	848C3090K0	LABEL	1	
29	848C3074A1	COVER	1		92	848C3090L0	LABEL	1	
30	8488251911	SCREW TP5(P-tight)xL19 T27	3		93	848C3590B0	LABEL, cover	1	
31	848C3332A1	HANDLE	1		94	848C3590C0	LABEL, case	1	
32	8488252711	SCREW TP5(P-tight)xL27 T27	4						
33	848C303311	HANDLE COMP.	1						
34	848C3033C1	LEVER	1						
35	3356-33321	• SPRING	1						
36	848C3033E3	ARM	1						
37	848C3033L1	COVER	1						
38	8488251911	SCREW TP5(P-tight)xL19 T27	1						
39	2841-31801	CAP ASSY	1						
40	2841-31820	• GASKET	1						
41	2877-31800	CAP ASSY	1						
42	2841-31820	• GASKET	1						
48	2850-34501	BREATHER ASSY	1						
49	848C3085U0	GROMMET	1						
50	848C308530	PIPE ASSY	1						
51	1850-85300	FILTER	1						
52	2850-34350	COLLAR	1						
53	848C3037A1	SPRING F	1						
54	848C3037B1	SPRING M	1						
55	848C3037C1	SPRING P	1						
56	8488251901	SCREW TP5(P-tight)xL19 T27	5						
57	848C3037D2	HELPER	2						
58	848C3037E1	BAND	1						

G3300EZ

Fig.3 POWER UNIT

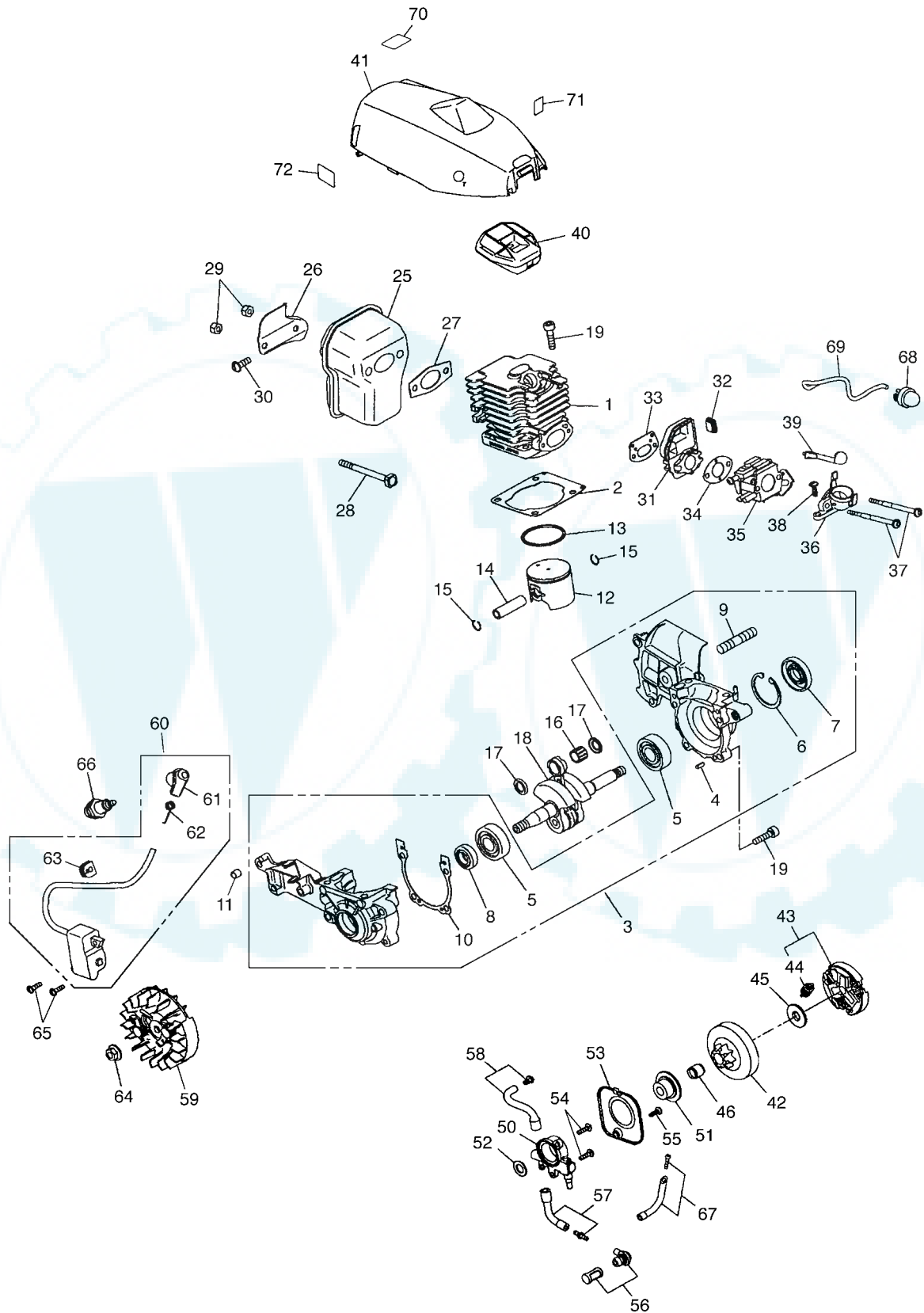
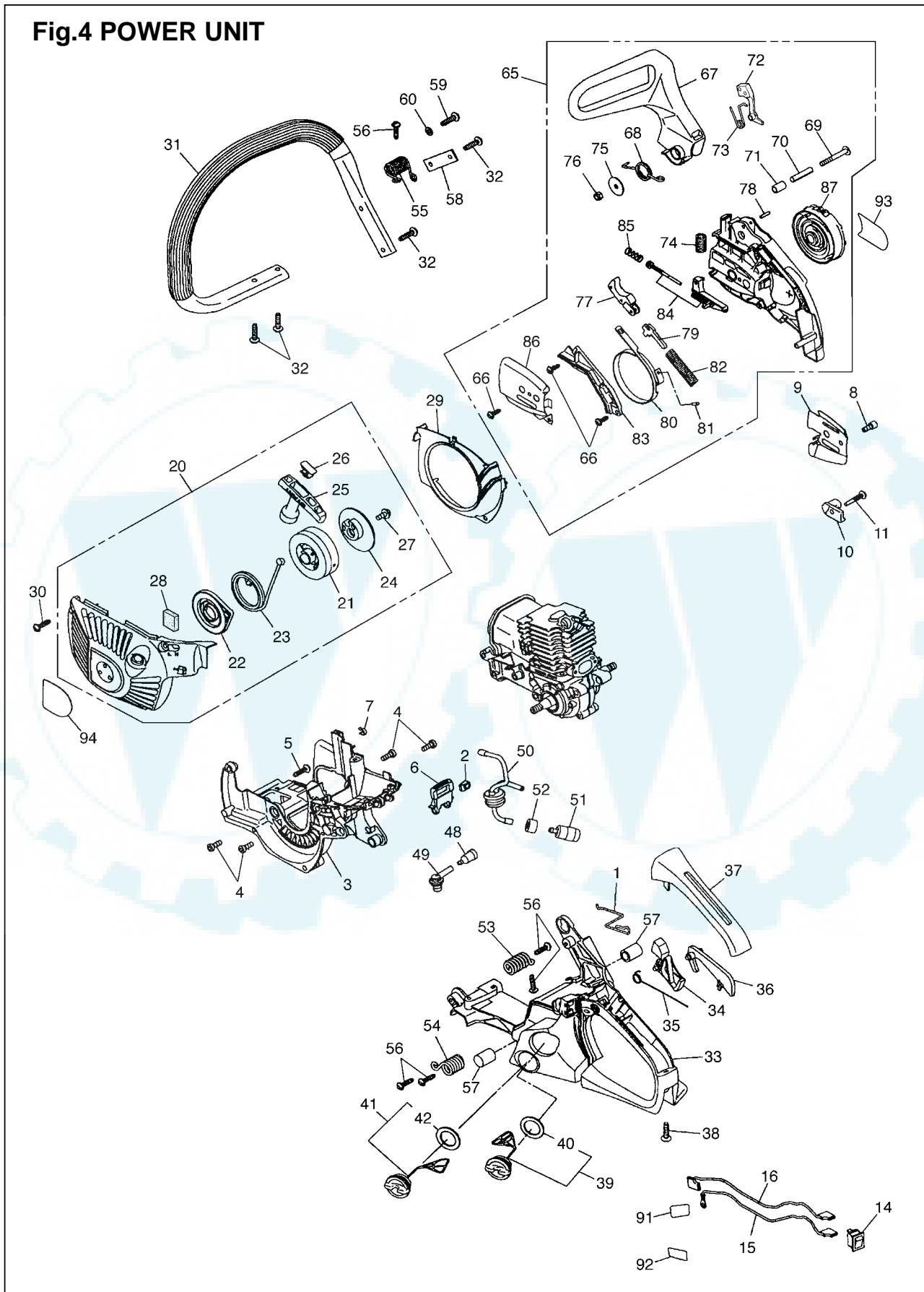


Fig.3 POWER UNIT

Key#	PART NUMBER	DESCRIPTION	Q'TY /UNIT	NOTE	Key#	PART NUMBER	DESCRIPTION	Q'TY /UNIT	NOTE
1	848C3012A1	CYLINDER	1		59	848C307111	ROTOR COMP.	1	
2	T2200-14210	GASKET, cyl	1		60	848C307121	COIL ASSY	1	
3	848C302101	CASE ASSY	1		61	2850-72110	• CAP	1	
4	2629-21130	• PIN	3		62	1400-72121	• SPRING	1	
5	06030-06201	• BEARING	2		63	5500-72130	• GROMMET	1	
6	04065-03212	• SNAPRING ø32	1		64	1650-43230	NUT M8xP1.0	1	
7	2169-21210	• SEAL	1		65	2670-55410	SCREW M4xL14 T20	2	
8	8488AC3210	• SEAL	1		66	3699-90032-10	SPARK PLUG	1	
9	2616-21230	• STUD	1		67	T2100-31500	PIPE COMP.	1	
10	848C3021D1	• GASKET	1		68	2850-81900	PUMP	1	
11	8488Y56000	SPACER	1		69	2850-82611	PIPE	1	
12	T2200-41110	PISTON	1		70	848C3690F0	LABEL, caution	1	
13	T2102-41210	RING	1		71	848C3090E0	LABEL, choke	1	
14	T2200-41310	PIN	1		72	T2990-21120	LABEL	1	
15	3310-41320	RING	2						
16	3310-41410	BEARING	1						
17	1650-41510	WASHER	2						
18	T2200-42000	SHAFT COMP.	1						
19	4820-13180	BOLT TORX M5xL20 T27	8						
25	T2200-15110	MUFFLER	1						
26	T2200-15310	STAY	1						
27	T2100-15210	GASKET	1						
28	T2100-15220	BOLT	2						
29	2850-15230	NUT	2						
30	8488151400	SCREW M5xL14 T27	1						
31	848C3014A1	INSULATOR	1						
32	T2200-31120	CAP	1						
33	848C3014B1	GASKET, in	1						
34	3330-14121	GASKET, carb	1						
35	848C308101	CARBURETOR ASSY	1	WT					
36	848C3082A1	MANIFOLD	1						
37	2867-82210	BOLT M4x70	2						
38	8488251601	SCREW TP5(P-tight)xL16 T27	1						
39	848C3082F2	ROD CHOKE	1						
40	T2200-83100	CLEANER	1						
41	848C3031A2	COVER	1						
42	T2220-51110	DRUM 3/8x6T ø60	1						
43	848C305121	CLUTCH	1						
44	848C3051E2	• SPRING	3						
45	T2041-51210	PLATE	1						
46	3310-51310	BEARING	1						
50	2841-55112	OIL PUMP	1						
51	2850-55121	WORM	1						
52	2850-55211	WASHER	1						
53	T2200-55610	COVER	1						
54	2670-55410	SCREW M4xL14 T20	2						
55	2670-54630	SCREW TP4(B-tight)xL12 T20	1						
56	T2100-23200	FILTER COMP.	1						
57	848C306731	PIPE IN COMP.	1						
58	T2200-21400	PIPE OUT COMP.	1						

G3300EZ

Fig.4 POWER UNIT



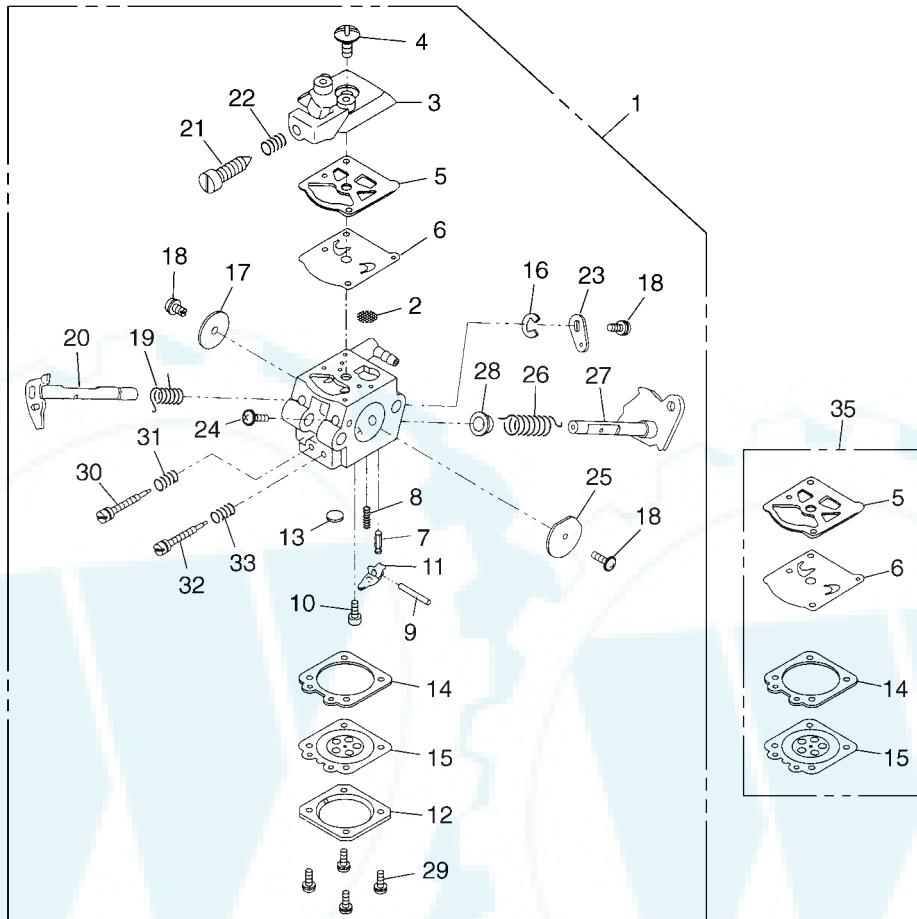
G3300EZ

Fig.4 POWER UNIT

Key#	PART NUMBER	DESCRIPTION	Q'TY /UNIT	NOTE	Key#	PART NUMBER	DESCRIPTION	Q'TY /UNIT	NOTE
1	848C3082H3	ROD	1		60	01640-20508	WASHER	1	
2	848C3082G2	GROMMET	1		65	848C365401	BRAKE ASSY	1	
3	848C3025A1	CASE	1		66	2670-54630	• SCREW TP4(B-tight)xL12 T20	3	
4	8488151400	SCREW M5xL14 T27	4		67	848C3054A2	• GUARD	1	
5	8488251911	SCREW TP5(P-tight)xL19 T27	1		68	2850-54120	• SPRING	1	
6	848C3025C2	KNOB	1		69	2850-54130	• SCREW	1	
7	848C3025D0	CLIP	1		70	2850-54140	• SPACER	1	
8	T2200-21230	BOLT	1		71	2850-54211	• SPACER	1	
9	848C306611	PLATE	1		72	2851-54222	• WEIGHT	1	
10	848C3066F1	CATCHER	1		73	2872-54230	• SPRING	1	
11	8488251911	SCREW TP5(P-tight)xL19 T27	1		74	2851-54270	• SPRING	1	
14	2850-74102	SWITCH ASSY	1		75	3330-75411	• WASHER	1	
15	848C3072C1	CORD EARTH	1		76	3310-53331	• NUT	1	
16	848C3072B1	CORD SWITCH	1		77	2851-54301	• LEVER COMP.	1	
20	848C307502	STARTER ASSY	1		78	2851-54350	• ROLLER	1	
21	848C307520	• REEL COMP.	1		79	2670-54411	• ARM	1	
22	2841-75300	• SPRING COMP.	1		80	T2200-54510	• BAND	1	
23	T2044-75410	• ROPE ø3	1		81	3356-24140	• ROLLER	1	
24	T2044-75510	• PULLEY	1		82	2670-54610	• SPRING	1	
25	1400-75170	• KNOB	1		83	848C3053C2	• COVER	1	
26	T2044-75420	• KNOB CAP	1		84	T2200-53200	• LINK A	1	
27	T1812-75150	• SCREW M5xL12	1		85	T2200-53280	• SPRING	1	
28	848C3074B0	• CUSHION	1		86	848C3066C1	• PLATE(B)	1	
29	848C3074A1	COVER	1		87	848C305341	• NUT ASSY	1	
30	8488251911	SCREW TP5(P-tight)xL19 T27	3		91	848C3090K0	LABEL	1	
31	T2200-32100	HANDLE	1		92	848C3090L0	LABEL	1	
32	8488251901	SCREW TP5(P-tight)xL19 T27	4		93	848C3090B0	LABEL, cover	1	
33	848C303311	HANDLE COMP.	1		94	848C3690C0	LABEL, case	1	
34	848C3033C1	LEVER	1						
35	3356-33321	• SPRING	1						
36	848C3033E3	ARM	1						
37	848C3033L1	COVER	1						
38	8488251911	SCREW TP5(P-tight)xL19 T27	1						
39	2841-31801	CAP ASSY	1						
40	2841-31820	• GASKET	1						
41	2877-31800	CAP ASSY	1						
42	2841-31820	• GASKET	1						
48	2850-34501	BREATHER ASSY	1						
49	848C3085U0	GROMMET	1						
50	848C308530	PIPE ASSY	1						
51	1850-85300	FILTER	1						
52	2850-34350	COLLAR	1						
53	848C3037A1	SPRING F	1						
54	848C3037B1	SPRING M	1						
55	848C3037C1	SPRING P	1						
56	8488251901	SCREW TP5(P-tight)xL19 T27	5						
57	848C3037D1	HELPER	2						
58	848C3037E1	BAND	1						
59	8488251601	SCREW TP5(P-tight)xL16 T27	1						

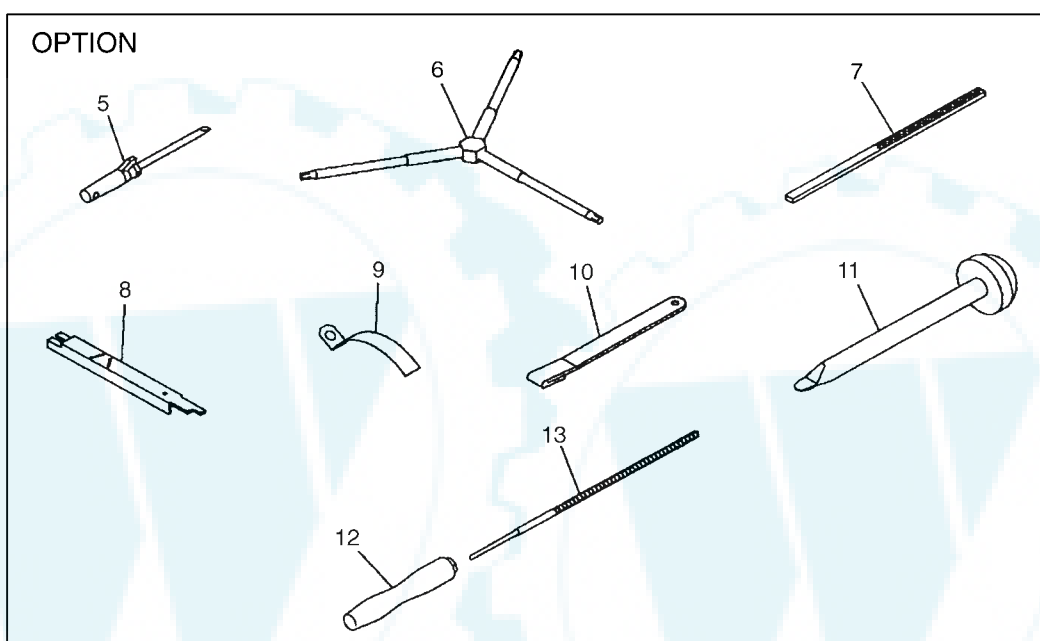
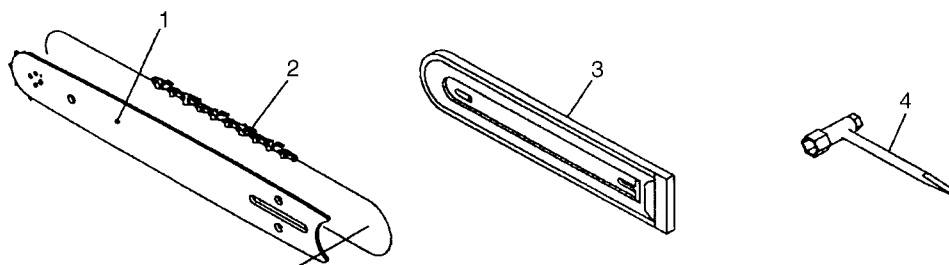
G3300/G3300EZ

Fig.5 CARBURETOR COMPONENTS



Key#	PART NUMBER	DESCRIPTION	Q'TY /UNIT	NOTE	Key#	PART NUMBER	DESCRIPTION	Q'TY /UNIT	NOTE
1	848C308101	CARBURETOR	1	WT	19	2670-81410	• SPRING	1	
2	3306-81380	• SCREEN	1		20	T2052-81370	• SHAFT	1	
3	2850-81120	• COVER	1		21	2630-81330	• SCREW	1	
4	3310-81130	• SCREW	1		22	3350-81380	• SPRING	1	
5	3304-81140	• GASKET	1		23	2670-81440	• LEVER	1	
6	1172-81150	• DIAPHRAGM	1		24	2850-81190	• SCREW	1	
7	3356-81310	• VALVE	1		25	2841-81450	• VALVE	1	
8	2841-81270	• SPRING	1		26	T2002-81350	• SPRING	1	
9	3310-81250	• PIN	1		27	848C3081E0	• SHAFT	1	
10	3310-81240	• SCREW	1		28	2850-81430	• BUSHING	1	
11	3310-81230	• LEVER	1		29	3310-81351	• SCREW	4	
12	3310-81280	• COVER	1		30	3080-81171	• NEEDLE	1	
13	1480-81420	• PLUG	1		31	1491-81160	• SPRING	1	
14	2850-81290	• GASKET	1		32	T2104-81330	• NEEDLE	1	
15	3310-81260	• DIAPHRAGM	1		33	3080-81320	• SPRING	1	
16	1148-81390	• RING	1		35	T2100-06020	GASKET KIT	1	
17	3310-81341	• VALVE	1						
18	2880-81470	• SCREW	3						

Fig.6 ACCESSORIES



Key#	PART NUMBER	DESCRIPTION	QTY /UNIT	NOTE
1	848CB24G23	BAR 35-3/8	1	
2	2931-52210-50	CHAIN OREGON 91VG-J52E	1	
3	3617-97110	PROTECTOR 300~350mm	1	
4	3320-91140	WRENCH	1	
5	2670-91150	DRIVER	1	OPTION
6	2850-96410	WRENCH	1	OPTION
7	3317-91210	FILE	1	OPTION
8	3310-91540	GAUGE	1	OPTION
9	3330-97310	GAUGE	1	OPTION
10	2670-96220	STOPPER	1	OPTION
11	2670-96510	GUIDE	1	OPTION
12	3381-91510	FILE, round	1	OPTION
13	3381-91530	GRIP	1	OPTION

www.ersatzteil-service.de

www.ersatzteilplan.de



ZENOAH
KOMATSU

KOMATSU ZENOAH CO.

1-9 Minamidai, Kawagoe, Saitama, 350-1192 Japan

PRINTED IN JAPAN

Ihr Ersatzteilspezialist im Internet

PRINTED ON RECYCLED PAPER
IMPRIMÉ SUR PAPIER RECYCLÉ
GEDRUCKT AUF RECYCLING PAPIER
STAMPATO SU CARTA RICICLATA
IMPRESO EN PAPEL RECICLADO