

# PARTS LIST

## CHAIN SAW

### G2500 G2500-OPS

**NOTE :**

1. Use KOMATSU ZENOAH genuine parts specified in the parts list for repair and/or replacement.
2. KOMATSU ZENOAH does not warrant the machines, those which have been damaged by the use of any parts other than those specified by the company.
3. When placing orders of parts for repair and/or replacement, check if the model name and the serial number are suitable to those specified in the parts list, then use parts number described in the parts list.
4. The contents described in the parts list may change due to improvement.
5. The parts for the machine shall be supplied within ten (10) years after the machine is discontinued.  
[It is possible that some specific parts may be subject to change of their delivery term and list price within the limit of ten (10) years after the machine is discontinued. And it is also possible that some parts may be available even after the limit of ten (10) years.]

G2500

Fig.1 POWER UNIT

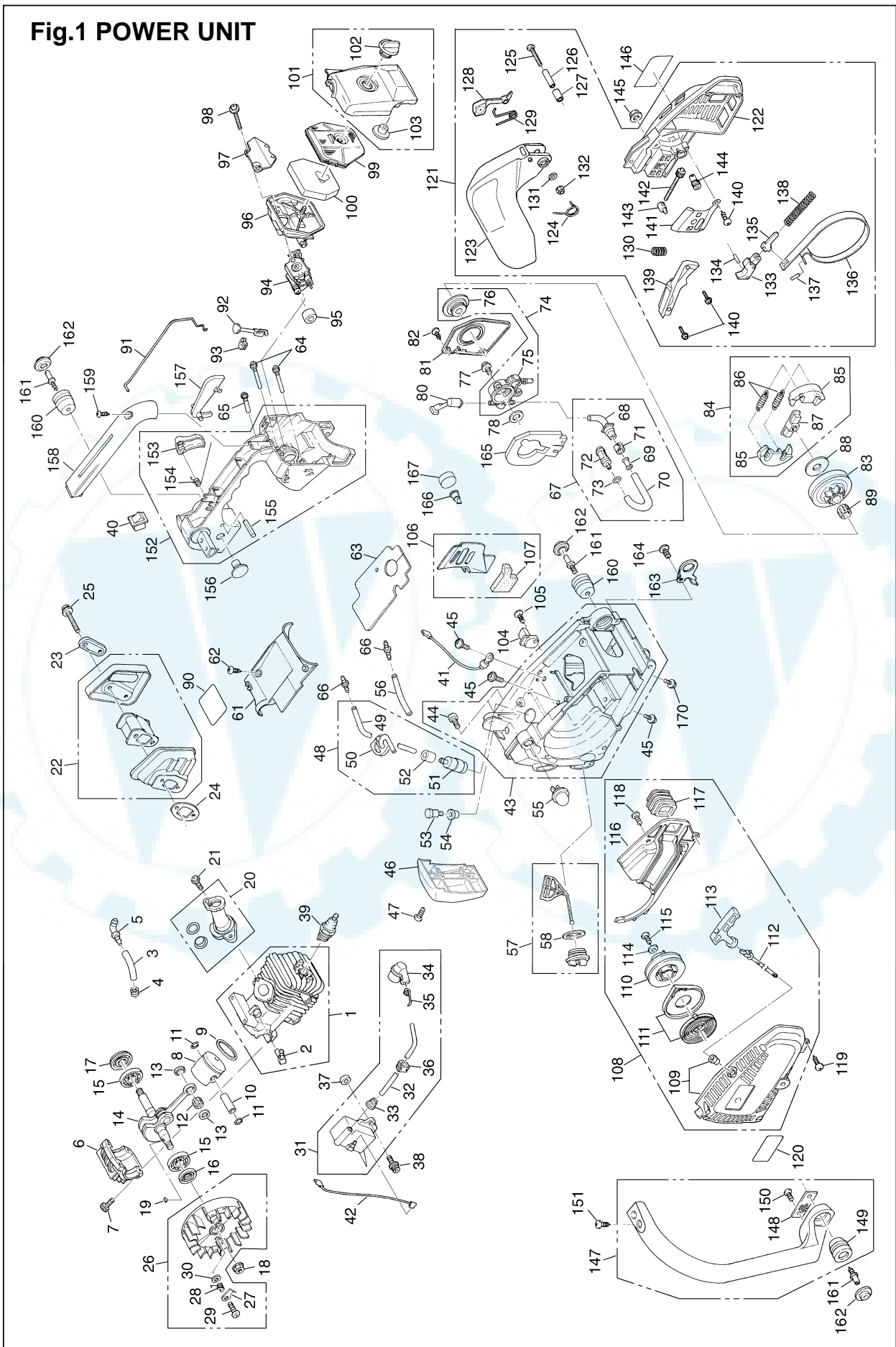


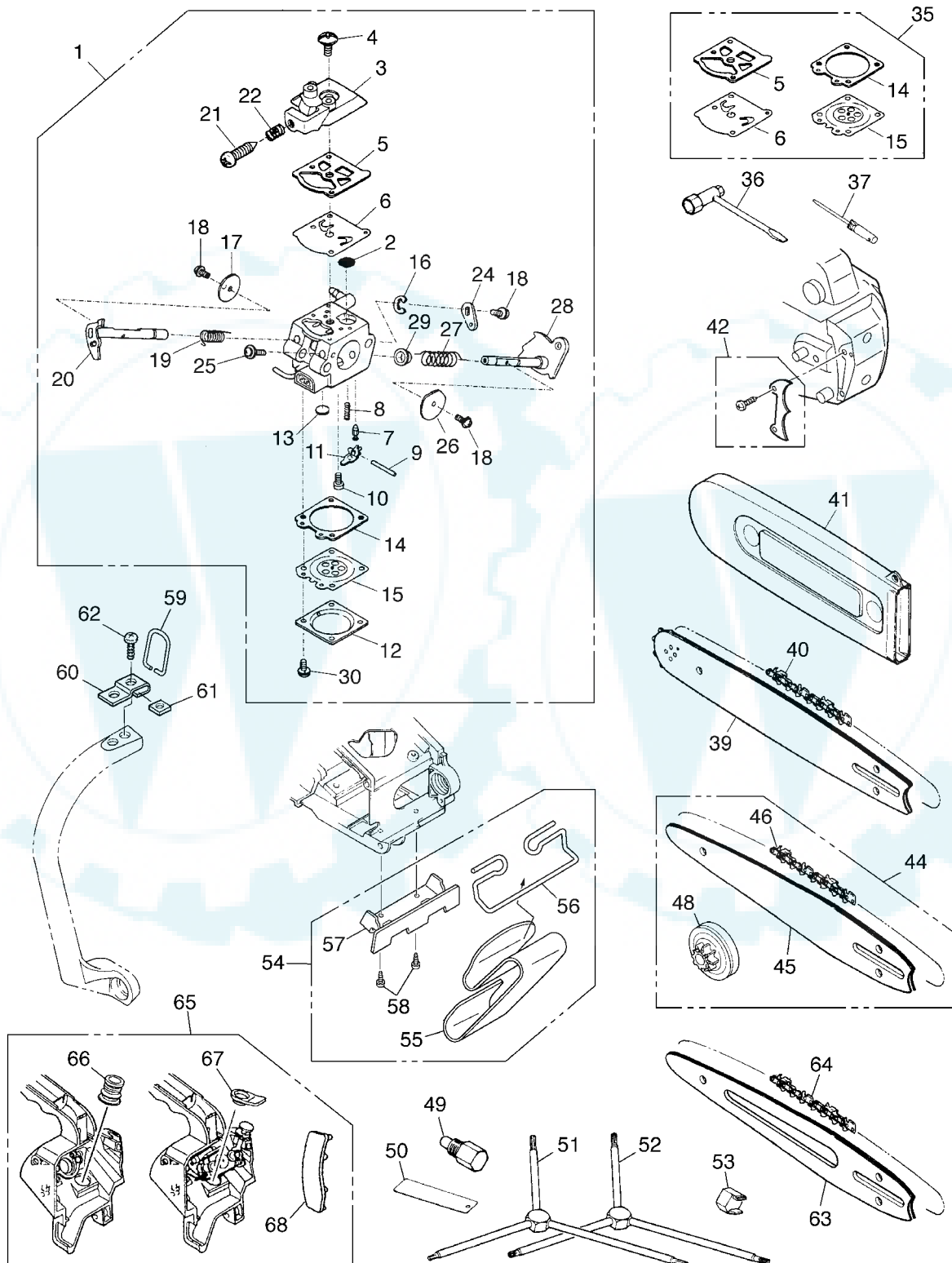
Fig.1 POWER UNIT

G2500

Key#	PART NUMBER	DESCRIPTION	Q'TY/UNIT	NOTE	Key#	PART NUMBER	DESCRIPTION	Q'TY/UNIT	NOTE
1	848C151211	CYLINDER COMP.	1		86	2841-51230	• SPRING	2	
2	2841-12120	• ELBOW	1		87	2475-51240	• BOSS	1	
3	2841-12210	PIPE	1		88	2841-51210	PLATE	1	
4	3310-82230	CLIP	1		89	3310-51310	BEARING	1	
5	3350-34320	ELBOW	1		90	848C1290F2	LABEL	1	
6	2841-21110	CRANKCASE	1		91	2841-82510	ROD	1	
7	T4950-52021	BOLT	4		92	2841-82411	ROD	1	
8	2841-41112	PISTON	1		93	2841-82421	GROMMET	1	
9	2841-41210	RING, piston	1		94	848C128100	CARBRETOR ASSY	1	WT-747
10	1600-41310	PIN	1		95	2841-82210	SEAL	1	
11	1260-41320	RING, snap	2		96	848C1083A3	PLATE	1	
12	5500-41410	BEARING	1		97	2841-82120	PLATE	1	
13	1101-41340	WASHER	2		98	0263-30545	SCREW	2	
14	2841-42001	SHAFT COMP.	1		99	2841-83111	CLEANER	1	
15	1155-21240	BEARING	2		100	2841-83120	ELEMENT	1	
16	T2041-21210	OIL SEAL	1		101	2841-83303	COVER COMP.	1	
17	T2041-21220	OIL SEAL	1		102	2841-83320	• KNOB	1	
18	1650-43230	NUT	1		103	2841-83330	• GROMMET	1	
19	1000-43240	KEY	1		104	2630-53412	CATCHER	1	
20	2841-06011	PIPE SET	1		105	2630-32170	SCREW	1	
21	0263-30414	SCREW	2		106	848C106610	PLATE	1	
22	T2041-15100	MUFFLER ASSY	1		107	848C1067D0	• SEAL	1	
23	T2046-15140	PLATE	1		108	2841-75001	STARTER ASSY	1	
24	2841-15210	GASKET	1		109	2841-75101	• CASE COMP.	1	
25	2670-82210	SCREW	2		110	2841-75210	• REEL	1	
26	2841-71102	ROTOR ASSY	1		111	2841-75300	• SPRING COMP.	1	
27	2841-71120	• PAWL	2		112	1850-75160	• ROPE	1	
28	T2044-71240	• SPRING	2		113	3330-75421	• KNOB	1	
29	2850-71140	• SCREW	2		114	1140-51230	• WASHER	1	
30	2850-71151	• WASHER	2		115	2630-75510	• SCREW	1	
31	2841-71200	MODULE ASSY	1		116	2841-75611	• COVER	1	
32	2841-71220	• CORD	1		117	2841-75710	• PIPE	1	
33	2616-71320	• CAP	1		118	2630-31950	• SCREW	1	
34	2850-72110	• CAP	1		119	2630-31950	SCREW	4	
35	1400-72121	• SPRING	1		120	2475-75131	LABEL	1	
36	1140-72110	GROMMET	1		121	2475-54000	BRAKE ASSY	1	
37	5500-72150	SPACER	2		122	2475-54110	• COVER	1	
38	3350-14150	BOLT	2		123	2841-54121	• GUARD	1	
39	3699-90032-10	SPARK PLUG	1	RCJ7Y	124	2872-54120	• SPRING	1	
40	2850-74102	SWITCH ASSY	1		125	0263-80530	• SCREW	1	
41	2850-74213	CORD	1		126	2872-54140	• SPACER	1	
42	2841-74220	CORD	1		127	2850-54211	• SPACER	1	
43	848C103111	CASE COMP.	1		128	848C605423	• WEIGHT	1	
44	2841-31141	• SCREW	2		129	2841-54230	• SPRING	1	
45	2870-31750	SCREW	4		130	2851-54270	• SPRING	1	
46	2475-31130	COVER	1		131	01641-20508	• WASHER	1	
47	2630-31950	SCREW	2		132	3310-53331	• NUT	1	
48	2841-31202	PIPE ASSY	1		133	2851-54301	• LEVER COMP.	1	
49	2841-31210	• PIPE	1		134	2851-54350	• ROLLER	1	
50	2841-31252	• GROMMET	1		135	2670-54411	• ARM	1	
51	1850-85300	• FILTER	1		136	2841-54510	• BAND	1	
52	2841-31280	• COLLAR	1		137	3356-24140	• ROLLER	1	
53	2850-34501	BREATHER ASSY	1		138	2670-54610	• SPRING	1	
54	3317-85120	GROMMET	1		139	2841-54620	• COVER	1	
55	2850-81900	PUMP	1		140	2630-33610	• SCREW	4	
56	2841-31260	PIPE	1		141	2841-53211	• PLATE	1	
57	2841-31801	CAP ASSY	2		142	2841-53240	• SCREW	1	
58	2841-31820	• GASKET	2		143	2810-53221	• NUT	1	
61	T2041-31910	COVER	1		144	2671-53230	• GEAR	1	
62	2630-31950	SCREW	2		145	3350-53410	NUT	1	
63	2841-31921	MAT	1		146	2475-53121	LABEL	1	
64	2841-37111	PIPE	2		147	2841-32101	HANDLE ASSY	1	
65	2841-37121	PIPE	1		148	2841-32150	• STOPPER	1	
66	2841-37150	JOINT	2		149	2841-35110	• DAMPER	1	
67	2841-31300	PIPE COMP.	1		150	2630-75510	• SCREW	1	
68	2841-31311	• PIPE	1		151	2630-75510	SCREW	2	
69	3310-57320	• JOINT	1		152	848C103311	HANDLE COMP.	1	
70	2841-31330	• PIPE	1		153	848C1033C3	• LEVER THROTTLE	1	
71	3310-57340	• CLIP	1		154	3356-33321	• SPRING	1	
72	2670-23131	• FILTER	1		155	04025-00524	• SPRING PIN	1	
73	1260-41320	• RING	1		156	2841-35180	STOPPER	1	
74	848C106704	OIL PUMP ASSY	1		157	848C3033E3	ARM	1	
75	848C1067A3	• OIL PUMP	1		158	2841-34110	COVER	1	
76	2850-55121	• WORM	1		159	2630-31950	SCREW	1	
77	0263-30416	SCREW	2		160	2841-35110	DAMPER	2	
78	2850-55211	WASHER	1		161	2841-35120	BOLT	3	
80	2841-55250	PIPE	1		162	2841-35150	CAP	3	
81	2841-55310	COVER	1		163	2841-98210	HANGER	1	
82	2630-31950	SCREW	2		164	2630-33610	SCREW	1	
83	2475-51110	DRUM	1	3/8-6T	165	2841-55220	SEAL	1	
83	2841-51110	DRUM	1	1/4-8T	166	2850-21260	VALVE	1	
84	2475-51200	CLUTCH ASSY	1		167	2841-31410	SEAL	1	
85	2475-51220	• SHOE	2		170	2670-14220	SCREW	1	

G2500

Fig. 2 CARBURETOR COMPONENTS & ACCESSORIES



**Fig. 2 CARBURETOR COMPONENTS & ACCESSORIES**

Key#	PART NUMBER	DESCRIPTION	QTY /UNIT	NOTE	Key#	PART NUMBER	DESCRIPTION	QTY /UNIT	NOTE
1	848C128100	CARBRETOR ASSY	1	WT-747	56	T2046-98120	• HANGER	1	OP
2	3306-81380	• SCREEN	1		57	T2046-98130	• PLATE	1	OP
3	2630-81120	• COVER	1		58	2630-33610	• SCREW	2	OP
4	3310-81130	• SCREW	1		59	T2046-32180	HANGER	1	OP
5	3304-81140	• GASKET	1		60	T2046-32190	PLATE	1	OP
6	1172-81150	• DIAPHRAM	1		61	T2046-32170	NUT	1	OP
7	3356-81310	• VALVE	1		62	2630-32170	SCREW	1	OP
8	2867-81270	• SPRING	1		63	2980-52111	BAR	1	OP
9	3310-81250	• PIN	1		64	3622-52210-50	CHAIN, 25AP-60E	1	OP
10	3310-81240	• SCREW	1		65	2841-98301	ICING KIT	1	
11	3310-81230	• LEVER	1		66	2841-98310	• PIPE	1	
12	3310-81280	• COVER	1		67	2841-98320	• CAP	1	
13	1480-81420	• PLUG	1		68	2841-98330	• PROTECTOR	1	
14	2850-81290	• GASKET	1						
15	3310-81260	• DIAPHRAM	1						
16	1148-81390	• RING	1						
17	3310-81341	• VALVE	1						
18	2880-81470	• SCREW	3						
19	2670-81410	• SPRING	1						
20	T2040-81370	• SHAFT	1						
21	2630-81330	• SCREW	1						
22	3350-81380	• SPRING	1						
24	2841-81440	• LEVER	1						
25	2850-81190	• SCREW	1						
26	2841-81451	• VALVE	1						
27	2850-81350	• SPRING	1						
28	2841-81460	• SHAFT	1						
29	2850-81430	• BUSHING	1						
30	3310-81351	• SCREW	4						
35	T2100-06020	GASKET KIT	1						
36	3320-91140	WRENCH	1						
37	2670-91150	DRIVER	1						
39	2475-52110-50	BAR 10" SP	1						
40	3699-91480	CHAIN 91VG-40E	1						
41	3622-52310	PROTECTOR	1						
42	2475-98100	SPIKE KIT	1	OP					
44	CB10111	BAR KIT	1	OP					
45	2475-52120	• BAR, 10" CV	1						
46	3622-52210-50	• CHAIN, 25AP-60E	1						
48	2841-51110	• DRUM, 1/4-8T	1						
49	3350-96220	STOPPER, PISTON	1	OP					
50	3350-96240	GAUGE, AIR GAP	1	OP					
51	3304-97611	WRENCH, HEXAGON	1	OP					
52	2670-96410	WRENCH, TORX	1	OP					
53	2841-96110	WRENCH, CLUTCH	1	OP					
54	T2046-98100	BELT HANGER KIT	1	OP					
55	T2046-98110	• HOOK	1	OP					

G2500-OPS

Fig.3 POWER UNIT

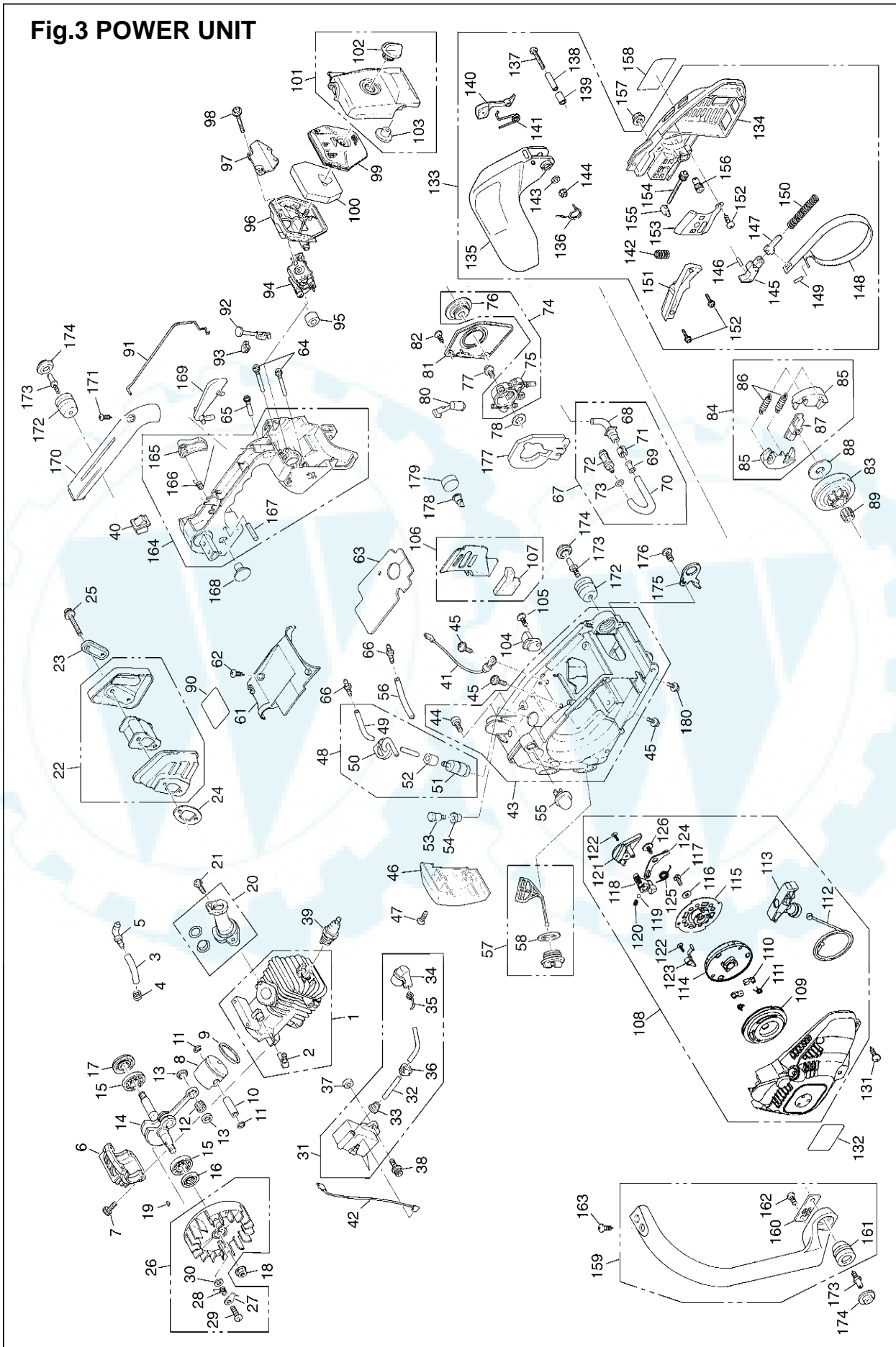


Fig.3 POWER UNIT

G2500-OPS

Key#	PART NUMBER	DESCRIPTION	Q'TY/UNIT	NOTE	Key#	PART NUMBER	DESCRIPTION	Q'TY/UNIT	NOTE
1	848C151211	CYLINDER COMP.	1		90	848C1290F2	LABEL	1	
2	2841-12120	• ELBOW	1		91	2841-82510	ROD	1	
3	2841-12210	PIPE	1		92	2841-82411	ROD	1	
4	3310-82230	CLIP	1		93	2841-82421	GROMMET	1	
5	3350-34320	ELBOW	1		94	848C1B8100	CARBRETOR ASSY	1	WT-747
6	2841-21110	CRANKCASE	1		95	2841-82210	SEAL	1	
7	T4950-52021	BOLT	4		96	848C1083A3	PLATE	1	
8	2841-41112	PISTON	1		97	2841-82120	PLATE	1	
9	2841-41210	RING, piston	1		98	0263-30545	SCREW	2	
10	1600-41310	PIN	1		99	2841-83111	CLEANER	1	
11	1260-41320	RING, snap	2		100	2841-83120	ELEMENT	1	
12	5500-41410	BEARING	1		101	2841-83303	COVER COMP.	1	
13	1101-41340	WASHER	2		102	2841-83320	• KNOB	1	
14	2841-42001	SHAFT COMP.	1		103	2841-83330	• GROMMET	1	
15	1155-21240	BEARING	2		104	2630-53412	CATCHER	1	
16	T2041-21210	OIL SEAL	1		105	2630-32170	SCREW	1	
17	T2041-21220	OIL SEAL	1		106	848C106610	PLATE	1	
18	1650-43230	NUT	1		107	848C1067D0	• SEAL	1	
19	1000-43240	KEY	1		108	848C147591	STARTER ASSY	1	
20	2841-06011	PIPE SET	1		109	848C147520	• REEL COMP.	1	
21	0263-30414	SCREW	2		110	848C1475D0	• RATCHET	2	
22	T2041-15100	MUFFLER ASSY	1		111	848C1475L0	• SPRING	2	
23	T2046-15140	PLATE	1		112	8488S80000	• ROPE	1	
24	2841-15210	GASKET	1		113	3330-75421	• KNOB	1	
25	2670-82210	SCREW	2		114	848C147530	• SPRING COMP.	1	
26	848C147110	ROTOR ASSY	1		115	848C147540	• PULLY COMP.	1	
27	848C1471R1	• PAWL	2		116	8488705020	• WASHER	1	
28	848C1471S0	• SPRING	2		117	8488351200	• SCREW	1	
29	8488151200	• SCREW	2		118	848C1475E1	• SELECT LEVER	1	
30	2850-71151	• WASHER	2		119	848C1475H0	• BALL	1	
31	848C147120	MODULE ASSY	1		120	8488D40701	• SPRING	1	
32	2841-71220	• CORD	1		121	848C1475B1	• COVER	1	
33	2616-71320	• CAP	1		122	8488531000	• SCREW	2	
34	2850-72110	• CAP	1		123	848C1475M0	• RATCHET	1	
35	1400-72121	• SPRING	1		124	848C1475C0	• STOPPER	1	
36	1140-72110	• GROMMET	1		125	848C1475S1	• SPRING	1	
37	5500-72150	SPACER	2		126	1850-75151	• SCREW	1	
38	3350-14150	BOLT	2						
39	3699-90032-10	SPARK PLUG	1	RCJ7Y	131	2630-31950	SCREW	4	
40	2850-74102	SWITCH ASSY	1		132	2475-75131	LABEL	1	
41	2850-74213	CORD	1		133	2475-54000	BRAKE ASSY	1	
42	8488M10120	CORD	1		134	2475-54110	• COVER	1	
43	848C103111	CASE COMP.	1		135	2841-54121	• GUARD	1	
44	2841-31141	• SCREW	2		136	2872-54120	• SPRING	1	
45	2870-31750	SCREW	4		137	0263-80530	• SCREW	1	
46	2475-31130	COVER	1		138	2872-54140	• SPACER	1	
47	2630-31950	SCREW	2		139	2850-54211	• SPACER	1	
48	2841-31202	PIPE ASSY	1		140	848C605423	• WEIGHT	1	
49	2841-31210	• PIPE	1		141	2841-54230	• SPRING	1	
50	2841-31252	• GROMMET	1		142	2851-54270	• SPRING	1	
51	1850-85300	• FILTER	1		143	01641-20508	• WASHER	1	
52	2841-31280	• COLLAR	1		144	3310-53331	• NUT	1	
53	2850-34501	BREATHER ASSY	1		145	2851-54301	• LEVER COMP.	1	
54	3317-85120	GROMMET	1		146	2851-54350	• ROLLER	1	
55	2850-81900	PUMP	1		147	2670-54411	• ARM	1	
56	2841-31260	PIPE	1		148	2841-54510	• BAND	1	
57	2841-31801	CAP ASSY	2		149	3356-24140	• ROLLER	1	
58	2841-31820	• GASKET	2		150	2670-54610	• SPRLNG	1	
					151	2841-54620	• COVER	1	
61	T2041-31910	COVER	1		152	2630-33610	• SCREW	4	
62	2630-31950	SCREW	2		153	2841-53211	• PLATE	1	
63	2841-31921	MAT	1		154	2841-53240	• SCREW	1	
64	2841-37111	PIPE	2		155	2810-53221	• NUT	1	
65	2841-37121	PIPE	1		156	2671-53230	• GEAR	1	
66	2841-37150	JOINT	2		157	3350-53410	NUT	1	
67	2841-31300	PIPE COMP.	1		158	2475-53121	LABEL	1	
68	2841-31311	• PIPE	1		159	2841-32101	HANDLE ASSY	1	
69	3310-57320	• JOINT	1		160	2841-32150	• STOPPER	1	
70	2841-31330	• PIPE	1		161	2841-35110	• DAMPER	1	
71	3310-57340	• CLIP	1		162	2630-75510	• SCREW	1	
72	2670-23131	• FILTER	1		163	2630-75510	SCREW	2	
73	1260-41320	• RING	1		164	848C103311	HANDLE COMP.	1	
74	848C106704	OIL PUMP ASSY	1		165	848C1033C3	• LEVER THROTTLE	1	
75	848C1067A3	• OIL PUMP	1		166	3356-33321	• SPRING	1	
76	2850-55121	• WORM	1		167	04025-00524	• SPRING PIN	1	
77	0263-30416	SCREW	2		168	2841-35180	STOPPER	1	
78	2850-55211	WASHER	1		169	848C3033E3	ARM	1	
					170	2841-34110	COVER	1	
80	2841-55250	PIPE	1		171	2630-31950	SCREW	1	
81	2841-55310	COVER	1		172	2841-35110	DAMPER	2	
82	2630-31950	SCREW	2		173	2841-35120	BOLT	3	
83	2475-51110	DRUM	1	3/8-6T	174	2841-35150	CAP	3	
83	2841-51110	DRUM	1	1/4-8T	175	2841-98210	HANGER	1	
84	2475-51200	CLUTCH ASSY	1		176	2630-33610	SCREW	1	
85	2475-51220	• SHOE	2		177	2841-55220	SEAL	1	
86	2841-51230	• SPRING	2		178	2850-21260	VALVE	1	
87	2475-51240	• BOSS	1		179	2841-31410	SEAL	1	
88	2841-51210	PLATE	1		180	2670-14220	SCREW	1	
89	3310-51310	BEARING	1						

G2500-OPS

Fig. 4 CARBURETOR COMPONENTS & ACCESSORIES

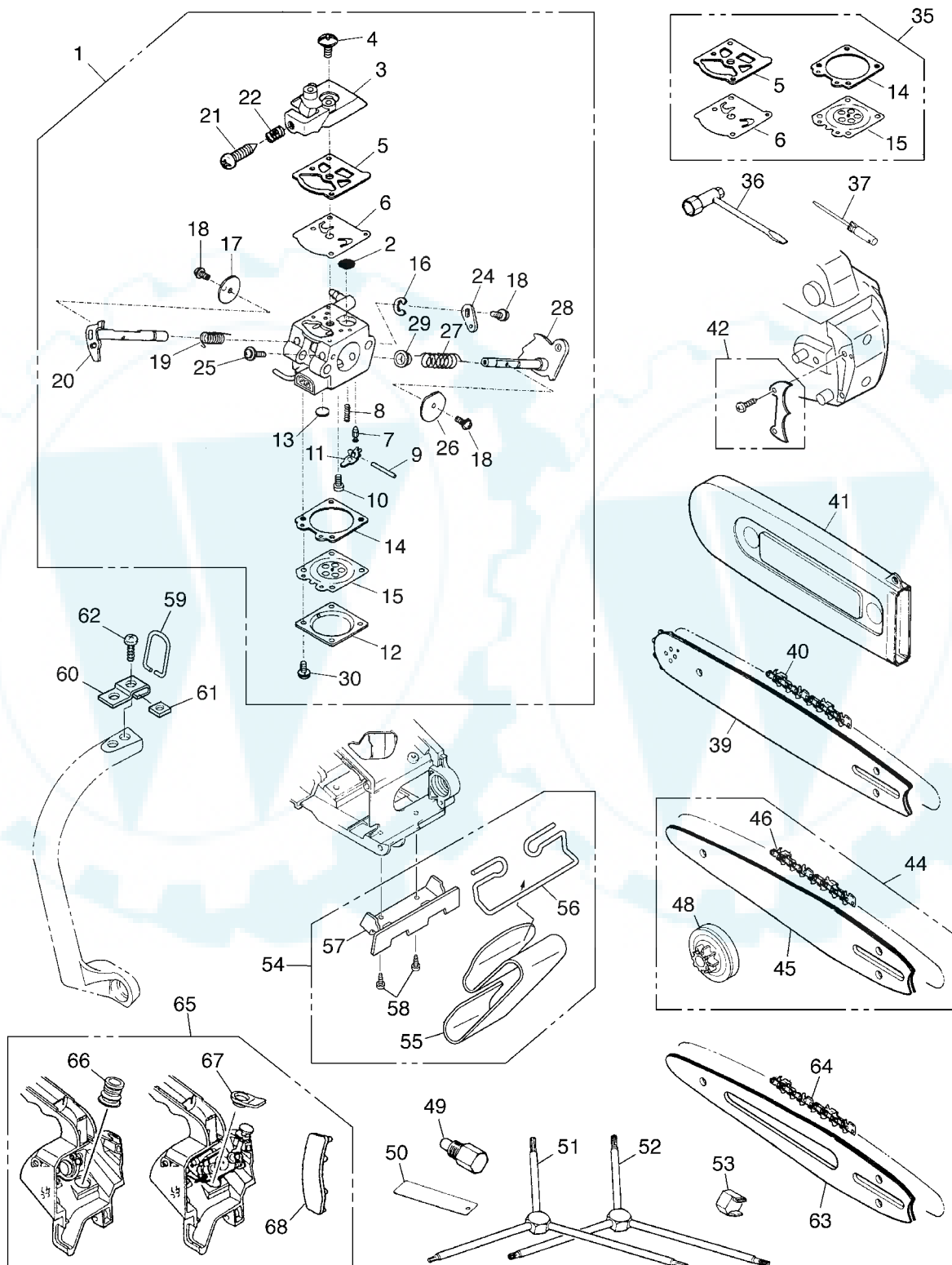


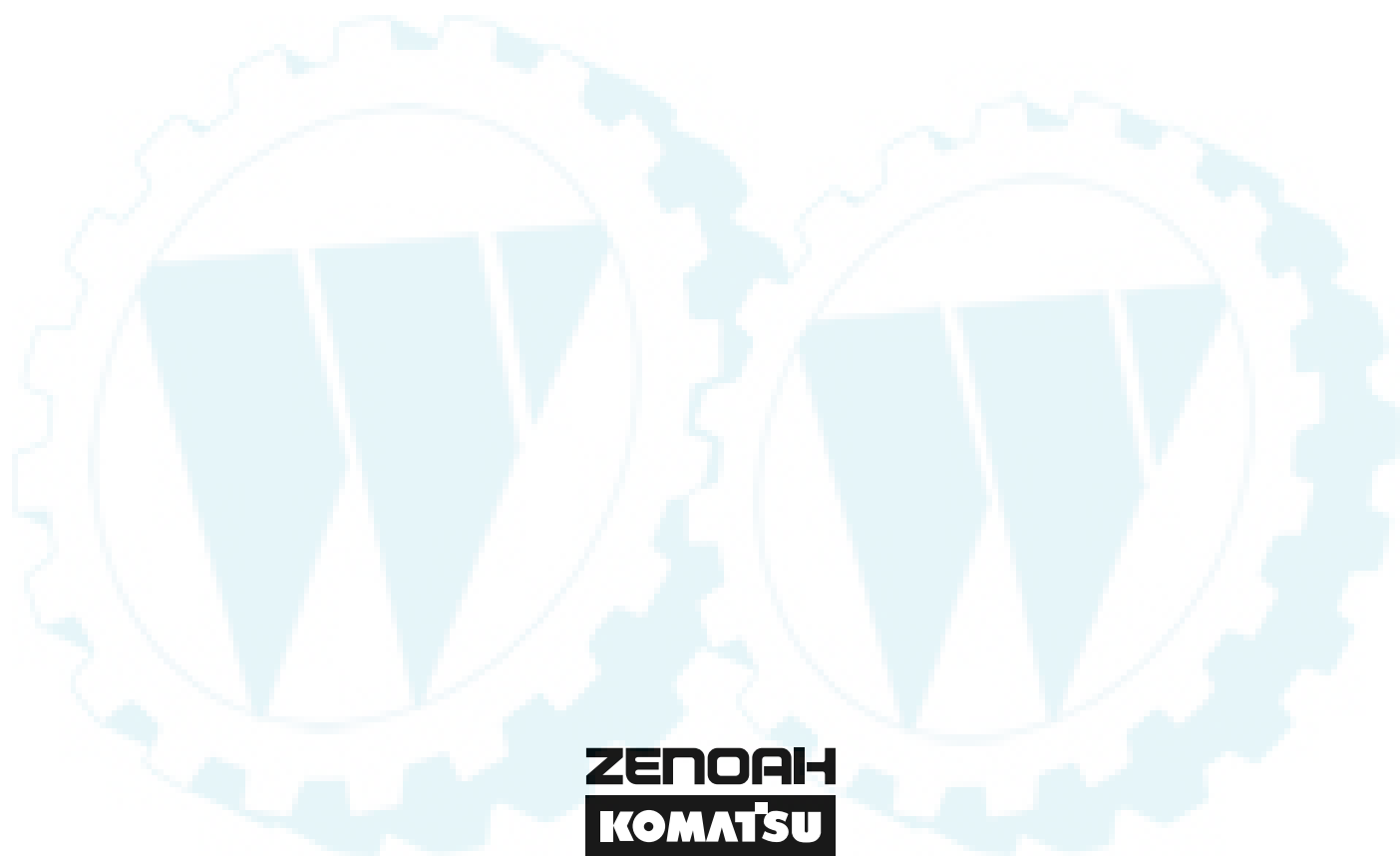


Fig. 4 CARBURETOR COMPONENTS &amp; ACCESSORIES

Key#	PART NUMBER	DESCRIPTION	Q'TY /UNIT	NOTE	Key#	PART NUMBER	DESCRIPTION	Q'TY /UNIT	NOTE
1	848C1B8100	CARBRETOR ASSY	1	WT-747	56	T2046-98120	• HANGER	1	OP
2	3306-81380	• SCREEN	1		57	T2046-98130	• PLATE	1	OP
3	2630-81120	• COVER	1		58	2630-33610	• SCREW	2	OP
4	3310-81130	• SCREW	1		59	T2046-32180	HANGER	1	OP
5	3304-81140	• GASKET	1		60	T2046-32190	PLATE	1	OP
6	1172-81150	• DIAPHRAM	1		61	T2046-32170	NUT	1	OP
7	3356-81310	• VALVE	1		62	2630-32170	SCREW	1	OP
8	2867-81270	• SPRING	1		63	2980-52111	BAR	1	OP
9	3310-81250	• PIN	1		64	3622-52210-50	CHAIN, 25AP-60E	1	OP
10	3310-81240	• SCREW	1		65	2841-98301	ICING KIT	1	
11	3310-81230	• LEVER	1		66	2841-98310	• PIPE	1	
12	3310-81280	• COVER	1		67	2841-98320	• CAP	1	
13	1480-81420	• PLUG	1		68	2841-98330	• PROTECTOR	1	
14	2850-81290	• GASKET	1						
15	3310-81260	• DIAPHRAM	1						
16	1148-81390	• RING	1						
17	3310-81341	• VALVE	1						
18	2880-81470	• SCREW	3						
19	2670-81410	• SPRING	1						
20	T2040-81370	• SHAFT	1						
21	2630-81330	• SCREW	1						
22	3350-81380	• SPRING	1						
24	2841-81440	• LEVER	1						
25	2850-81190	• SCREW	1						
26	2841-81451	• VALVE	1						
27	2850-81350	• SPRING	1						
28	2841-81460	• SHAFT	1						
29	2850-81430	• BUSHING	1						
30	3310-81351	• SCREW	4						
35	T2100-06020	GASKET KIT	1						
36	3320-91140	WRENCH	1						
37	2670-91150	DRIVER	1						
39	2475-52110-50	BAR 10" SP	1						
40	3699-91480	CHAIN 91VG-40E	1						
41	3622-52310	PROTECTOR	1						
42	2475-98100	SPIKE KIT	1	OP					
44	CB10111	BAR KIT	1	OP					
45	2475-52120	• BAR, 10" CV	1						
46	3622-52210-50	• CHAIN, 25AP-60E	1						
48	2841-51110	• DRUM, 1/4-8T	1						
49	3350-96220	STOPPER, PISTON	1	OP					
50	3350-96240	GAUGE, AIR GAP	1	OP					
51	3304-97611	WRENCH, HEXAGON	1	OP					
52	2670-96410	WRENCH, TORX	1	OP					
53	2841-96110	WRENCH, CLUTCH	1	OP					
54	T2046-98100	BELT HANGER KIT	1	OP					
55	T2046-98110	• HOOK	1	OP					

[www.ersatzteil-service.de](http://www.ersatzteil-service.de)

[www.ersatzteilplan.de](http://www.ersatzteilplan.de)



**ZENOAH**  
**KOMATSU**

**KOMATSU ZENOAH CO.**

1-9 Minamidai, Kawagoe, Saitama, 350-1192 Japan

PRINTED IN JAPAN

Ihr Ersatzteilspezialist im Internet

PRINTED ON RECYCLED PAPER  
IMPRIMÉ SUR PAPIER RECYCLÉ  
GEDRUCKT AUF RECYCLING PAPIER  
STAMPATO SU CARTA RICICLATA  
IMPRESO EN PAPEL RECICLADO