

Robin

Brush Cutter

MODEL NB02T

INSTRUCTION MANUAL

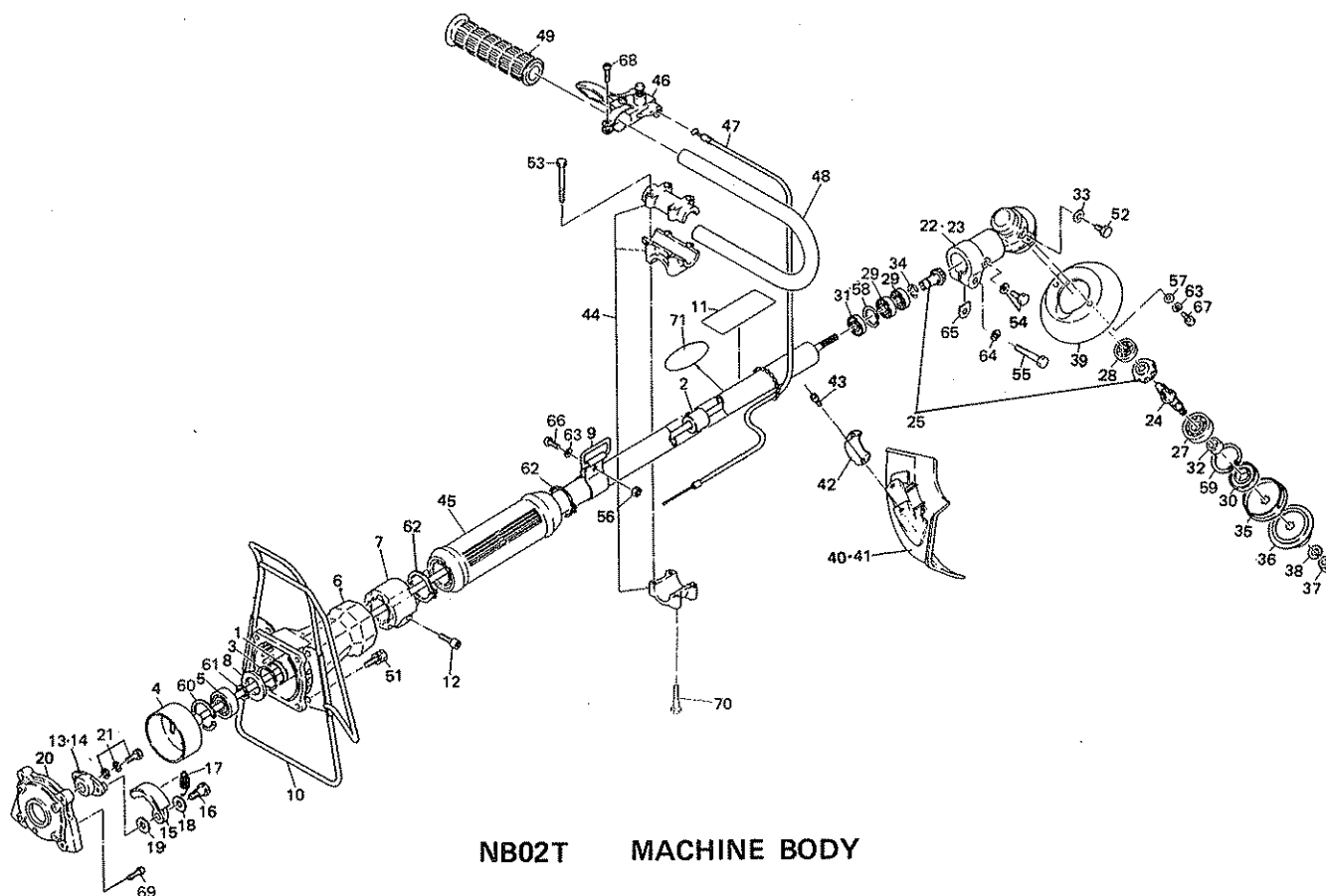
- Assembly
- Maintenance
- Operation
- Repair Parts

CAUTION:

**Read Rules for Safe Operation and
Instructions Carefully**



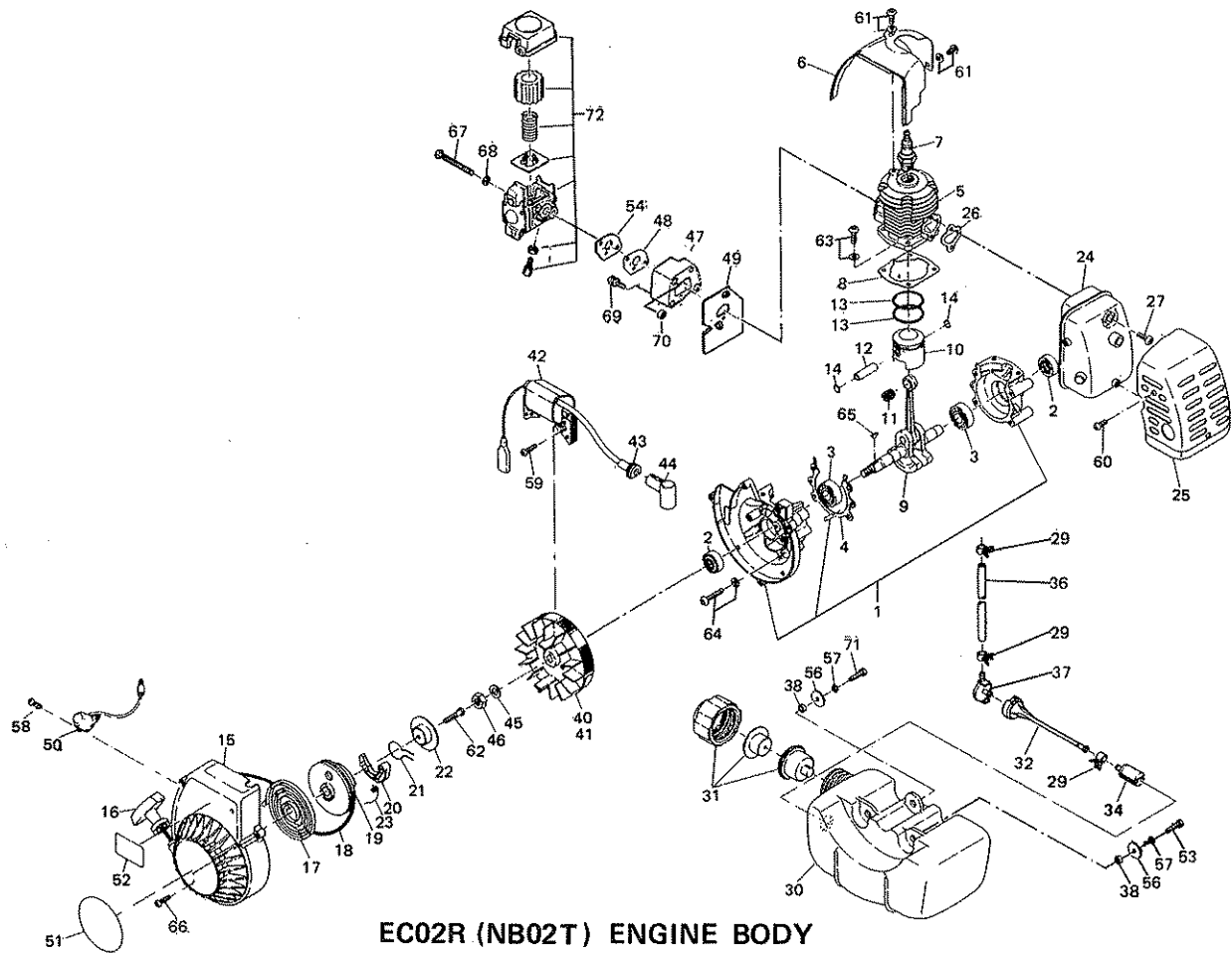
FUJIROBIN INDUSTRIES LTD.
Tokyo-Japan



NB02T MACHINE BODY

REPLACEMENT PARTS LIST

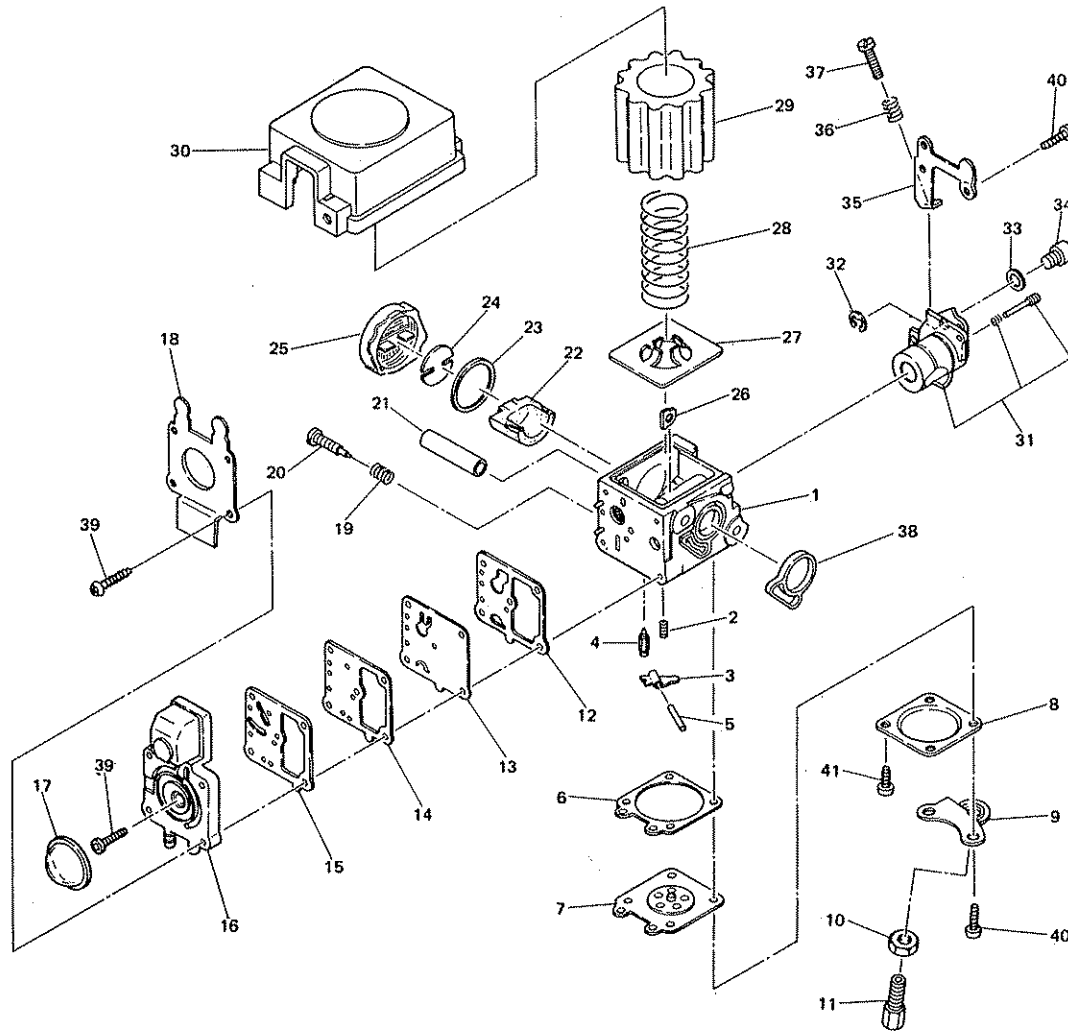
KEY NO.	MFG. PART NO.	U.S. PART NO.	QTY.	DESCRIPTION	KEY NO.	MFG. PART NO.	U.S. PART NO.	QTY.	DESCRIPTION
1	NB23-1001C	8000	1	Pipe case ass'y (incl. 2, 3)	36	NB25-8102/1A	8028	1	Disk washer (lower)
2	NB23-1051A	8001	5	Bearing compl.	37	NB25-8106	8029	1	Nut
3	NB23-1104	8002	1	Snap ring (outer)	38	0203 08999 0	1440	1	Spring washer
4	NB25-1002C	8003	1	Long shaft ass'y (incl. 5, 61, 62)	39	NB25-8105B	8030	1	Guard
5	NB25-2115	1688	1	Ball bearing	40	NB25-8010D	3312	1	Safety cover ass'y (incl. 41~43)
6	NB23-1111	8004	1	Pipe case holder	41	NB25-8120A	8032	1	Safety cover
7	NB23-1052D	8005	1	Stopper compl.	42	NB25-8121	8033	1	Cover clamping fixture
8	NB25-1113B	8006	1	Washer	43	0119 05 9850	3313	2	Bolt (socket head)
9	NB23-7051	8007	1	Hanger compl.	44	NB25-80110	8034	1	Handle joint ass'y (incl. 53, 64)
10	NB02A-0531C	8008	1	Stand compl.	45	NB02A-1131B	8035	1	Grip (pipe case)
11	NB40-9149	9081	1	Prolabel	46	NB26-5055	8148	1	Throttle lever ass'y
12	0119 05988 0	8009	1	Bolt (socket head)	47	NB31-5051B	8149	1	Throttle wire compl.
13	NB22-2051A	3135	1	Clutch compl. (incl. 14 ~ 19)	48	NB02A-401B	1153	1	Handle
14	NB02A-201A	1662	1	Holder	49	NB25-4103	8037	1	Grip
15	NB26-2102	3136	2	Clutch shoe	51	00116 0620 0	8040	4	Bolt ass'y (cross-recessed)
16	NB26-2103	3137	2	Clutch bolt	52	NB21-3116	8150	1	Bolt
17	NB25-2104A	8014	1	Spring	53	0119 05984 0	8151	4	Bolt (socket head)
18	NB02A-206	1143	2	Washer (A)	54	00113 0612 0	1388	1	Bolt ass'y
19	NB02A-207	1144	2	Washer (B)	55	00166 0630 0	8044	1	Bolt
20	NB25-5103A	8145	1	Locating plate	56	00227 0500 0	1703	1	Nut
21	NB23-2001	1147	1	Holder clamping bolt	57	00310 0500 0	1183	2	Washer
22	NB23-0301	8015	1	Head case unit (incl. 23~38, 52, 54, 55, 58, 59, 60, 65)	58	00314 2400 0	1187	1	Snap ring (inner)
23	NB23-3101/2	8016	1	Gear case	59	00314 3000 0	1188	1	Snap ring (inner)
24	NB31-3102	8146	1	Cutter shaft	60	00314 3200 0	1189	1	Snap ring (inner)
25	NB31-3051	8147	1	Gear set	61	00315 1200 0	1398	1	Snap ring (outer)
27	NB25-3110	8019	1	Ball bearing	62	00315 2800 0	1396	2	Snap ring (outer)
28	NB25-3111	8020	1	Ball bearing	63	00320 0500 0	1286	1	Spring washer
29	NB25-3112	8021	2	Ball bearing	64	00320 0600 0	1294	2	Spring washer
30	NB25-3113	8022	1	Oil seal	65	00371 1000 0	8045	1	Gasket (fiber)
31	NB25-3114	8023	1	Oil seal	66	00431 0514 0	8152	1	Screw (pan head)
32	NB25-3115B	8024	1	Collar (oil seal)	67	00431 0516 0	1074	2	Screw (pan head)
33	0211 06001 0	8025	1	Gasket	68	00431 0520 0	1402	1	Screw (pan head)
34	NB25-3117	8026	1	Snap ring (outer)	69	EC02-8516	1353	4	Plus and minus screw ass'y SW
35	NB25-8101B	8027	1	Disk washer (upper)	70	0119 05989 0		4	Bolt (socket head)
					71	NB23-9124	9082	1	Label



EC02R (NB02T) ENGINE BODY

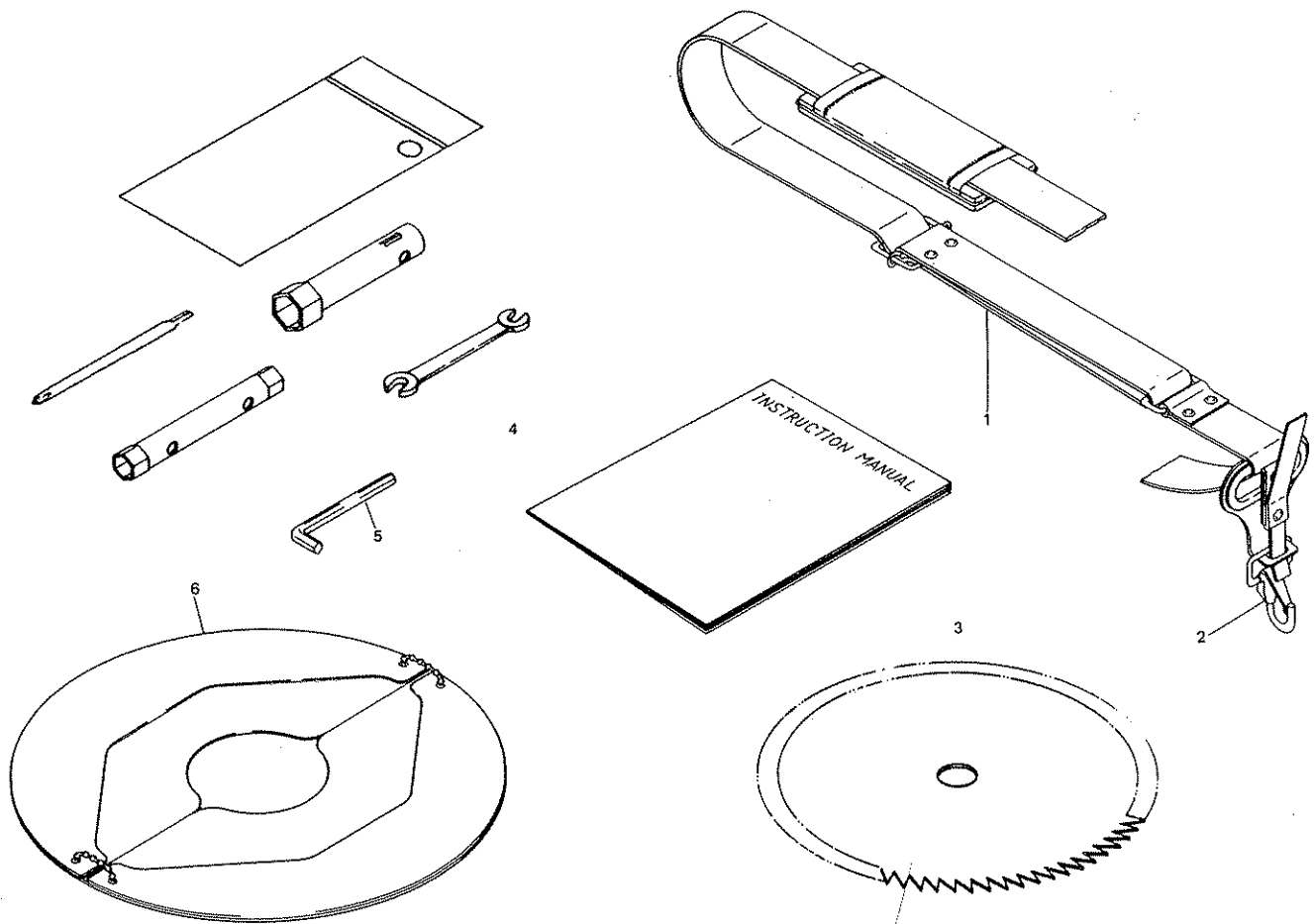
REPLACEMENT PARTS LIST

KEY NO.	MFG. PART NO.	U.S. PART NO.	QTY.	DESCRIPTION	KEY NO.	MFG. PART NO.	U.S. PART NO.	QTY.	DESCRIPTION
1	EC02-006	1001	1	Crank case compl. (incl. 2 ~ 4)	38	0230 06999 1	3031	3	Spacer
2	0440 12999 1	1002	2	Oil seal (EC03-111A Tc12227)	40	EC02-0799 B	8051	1	Magneto compl. (incl. 41, 42)
3	0600 12992 0	1003	2	Ball bearing (EC02-130 6001 C ₃)	41	4M-72191	8139	1	Flywheel
4	EC02-120B	1004	1	Crank case packing	42	4M-50466	8053	1	Ignition coil
5	EC02-110K	8046	1	Cylinder	43	0241 05998 6	8054	1	Gromet (EC02-705F)
6	EC02-501E-G	8047	1	Cylinder cover	44	EC02-0908	1051	1	Plug cap compl.
7	0650 14981 0	1007	1	Spark plug	45	0203 08999 0	1440	1	Spring washer (left)
8	EC02-121C	1008	1	Cylinder packing	46	0170 08996 0	3032	1	Nut (left)
9	EC02-088B	8153	1	Crank shaft compl.	47	EC02-6415A	8132	1	Heat insulator
10	EC02-221E	1011	1	Piston	48	EC02-3112	3122	1	Gasket (spacer)
11	0610 08999 0	1012	1	Needle bearing (EC02-231)	49	EC02-3113	8131	1	Heat insulator packing (cylinder)
12	EC02F-2033	8154	1	Piston pin	50	EC04-0713B	8155	1	Stop button compl.
13	TG02-207A	1014	2	Piston ring	51	NB23-9171/1	8059	1	Label (NB02T)
14	0565 07999 0	1015	2	Clip (EC02-220)	52	EC02-912	3035	1	Label (caution)
15	EC02-0598A-G	1640	1	Recoil starter compl. (incl. 16 ~ 23, 62)	53	00170 05160	1425	2	Bolt (cross recessed)
16	A57200100001	1018	1	Starter knob	54	EC02-6707	3123	1	Spacer
17	A60002600000	1020	1	Spiral spring	56	00312 0500 0	1429	3	Washer
18	A57100890000	1021	1	Starter rope	57	00320 0500 0	1286	3	Spring washer
19	A54102600100	1721	1	Reel	58	EC02-7406	8156	2	Plus & minus screw
20	A55002610000	1023	1	Ratchet	59	EC02-9420	3314	2	Plug & minus screw ass'y SW.W
21	A60102600000	1024	1	Friction spring	60	014005996 0	8157	3	Screw
22	A56002600110	1026	1	Friction plate	61	EC02G-8508	8158	2	Plus & minus screw ass'y W
23	A60503210000	1605	1	Return spring	62	00431 0512 0	1442	1	Screw
24	EC02-015B-TA	3028	1	Muffler ass'y	63	EC02-8516	3152	4	Plus & minus screw ass'y SW
25	EC02-3004-SA	3029	1	Muffler cover	64	EC02-8525	8160	4	Plug & minus screw ass'y SW
26	EC02-315B	1646	1	Muffler gasket	65	00532 0310 0	1077	1	Woodruff key
27	0119-05995-0	1223	2	Screw (socket head)	66	EC02-7516	8159	3	Plus & minus screw
29	EC01A-6070	3114	3	Hose clamp	67	EC02-7450	8133	2	Plus & minus screw
30	EC02-6001A	1655	1	Fuel tank	68	00311 0400 0	1113	2	Washer
31	EC02-0669C	8050	1	Fuel tank cap compl.	69	EC02-9522	8134	2	Plus & minus screw ass'y SW.W
32	EC03F-6101B	3111	1	Rubber tube	70	00217 0400 0	8135	2	Nut M4
34	EC01A-6040	3112	1	Filter	71	00170 05120	1425	1	Bolt (cross recessed)
36	EC02-6101B	3115	2	Fuel pipe	72	EC02-0686B	8103	1	Carburetor ass'y
37	EC03F-6130A	3113	1	Connector (fuel)					



EC02R (NB02T) CARBURETOR REPLACEMENT PARTS LIST

KEY NO.	MFG. PART NO.	U.S. PART NO.	QTY.	DESCRIPTION	KEY NO.	MFG. PART NO.	U.S. PART NO.	QTY.	DESCRIPTION
1	EC02-0686B	8103	1	Carburetor Compl.	27	157-250	3119	1	Plate-cleaner
2	98-189	3177	1	Spring-metering lever	28	98-3018	8113	1	Spring-filter
3	166-48	3193	1	Lever-Metering	29	125-50	3117	1	Filter-air
4	82-67	3165	1	Valve-inlet needle	30	21-419	3116	1	Cover-air cleaner
5	144-77	3189	1	Pin-metering lever	31	34-523	8114	1	Valve ass'y-throttle
6	92-146	3166	1	Gasket-metering diaphragm	32	16-71	8115	1	Ring-spring retaining
7	95-526	3171	1	Diaphragm ass'y-metering	33	136-90	8116	1	Washer
8	21-158	3206	1	Cover-metering diaphragm	34	52-18	8117	1	Swivel
9	167-86	3198	1	Bracket-cable	35	167-94	8118	1	Bracket-idle screw
10	134-57	3126	1	Nut-cable ADJ	36	98-323	8119	1	Spring-idle ADJ
11	96-304	3120	1	Screw-cable ADJ	37	96-314	3311	1	Screw-idle ADJ
12	92-223	3167	1	Gasket-pump	38	16-101	8120	1	Ring-packing
13	95-88	3170	1	Diaphragm-pump	39	96-295	3172	5	Screw-pump cover
14	157-275	3192	1	Plate-pump	40	96-316	3175	4	Screw
15	92-250	3169	1	Gasket-plate	41	96-296	3173	2	Screw-metering cover
16	21-790	3160	1	Cover Ass'y-pump					
17	188-11	3197	1	Primer-pump					
18	167-88	3194	1	Bracket-primer pump					
19	98-438	3179	1	Spring-high speed needle					
20	102-328	3181	1	Needle-high speed					
21	122-157	8107	2	Sleeve-mounting					
22	125-53	8108	1	Filter-wick					
23	92-242	8109	1	Gasket-intake cap					
24	157-292	8110	1	Plate-wick					
25	25-71	8111	1	Cap-intake					
26	157-263	8112	2	Plate-mounting sleeve					



EC02R (NB02T) ACCESSORIES REPLACEMENT PARTS LIST

KEY NO.	MFG. PART NO.	U.S. PART NO.	QTY.	DESCRIPTION
1	NB23-7002	3315	1	Shoulder harness (incl. 2)
2	NB31-7102	1406	1	Hook
3	OB13-407B	NB02-95	1	Disk saw
4	NB25-9001B	8095	1	Tool kit (incl. 5)
5	0717 04999 0	8096	1	Wrench (socket head)
6	NB25-8001B	8097	1	Blade cover