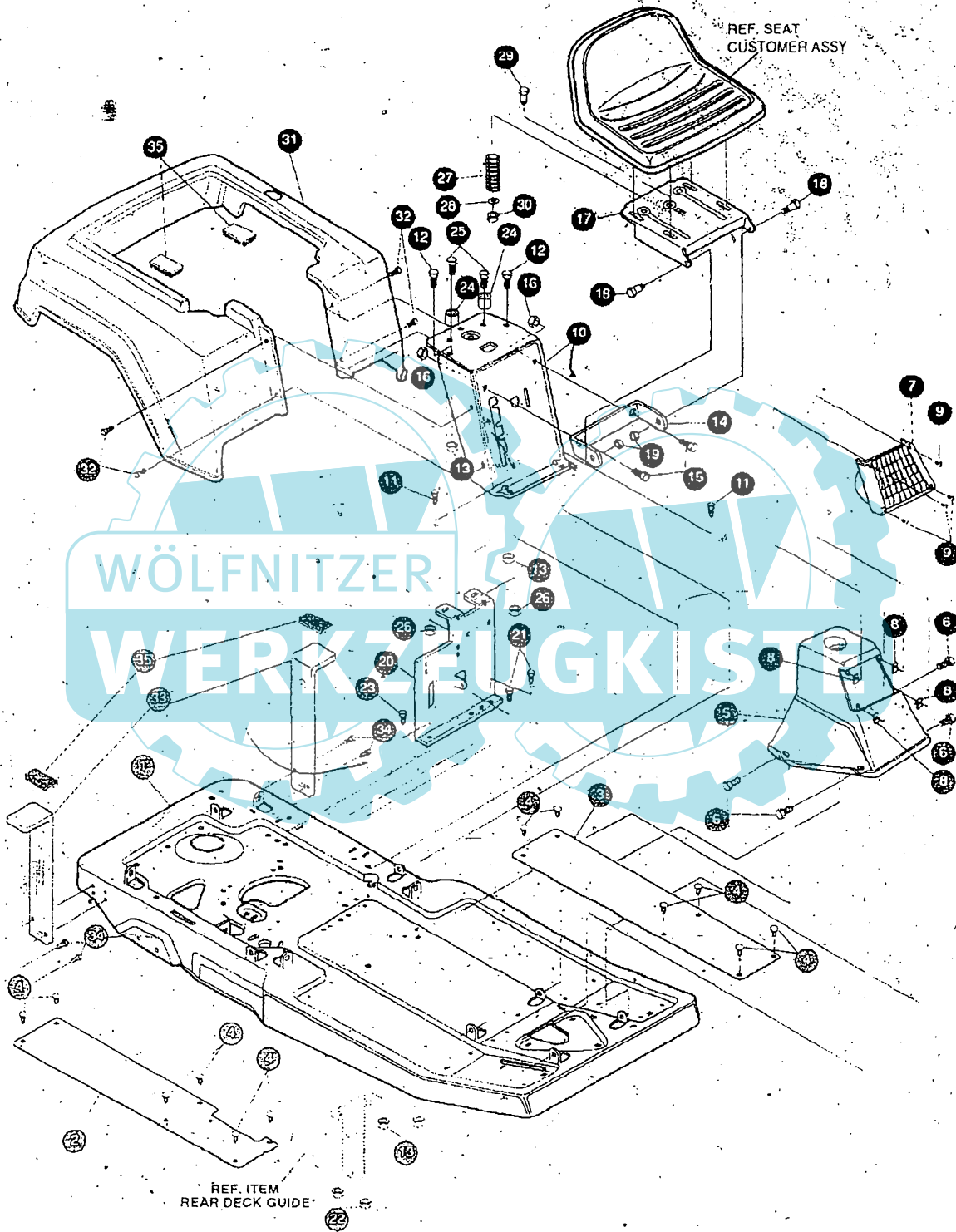


# 30" RIDING MOWER MODEL D3595-140

## BODY GROUP ASSEMBLY



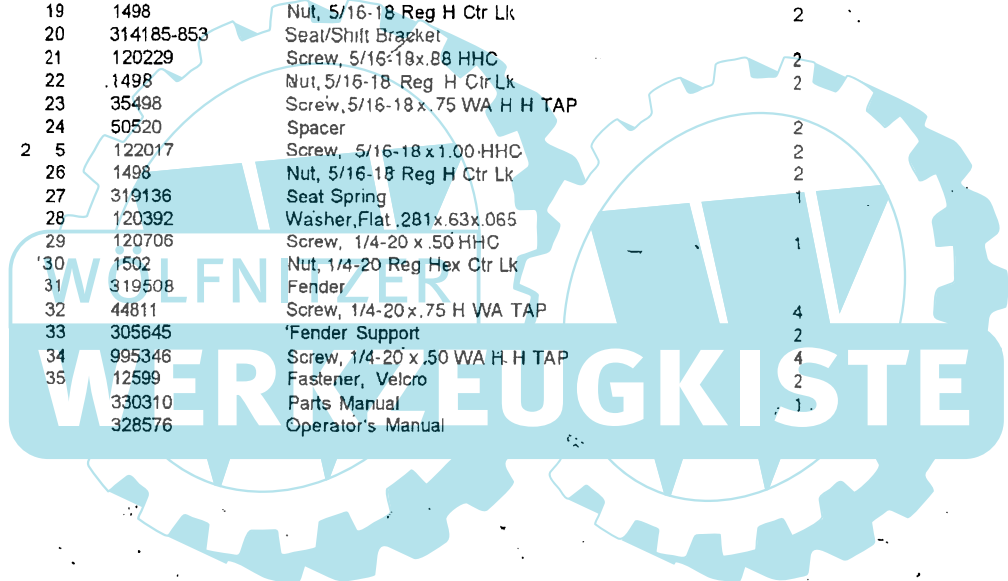
NOTE: ALWAYS USE ORIGINAL EQUIPMENT PARTS.  
Use of service/replacement parts other than original equipment parts may void your warranty.

ALL UNNUMBERED  
ITEMS ARE INTERCHANGEABLE  
WITH OPPOSITE SIDE

33020;A

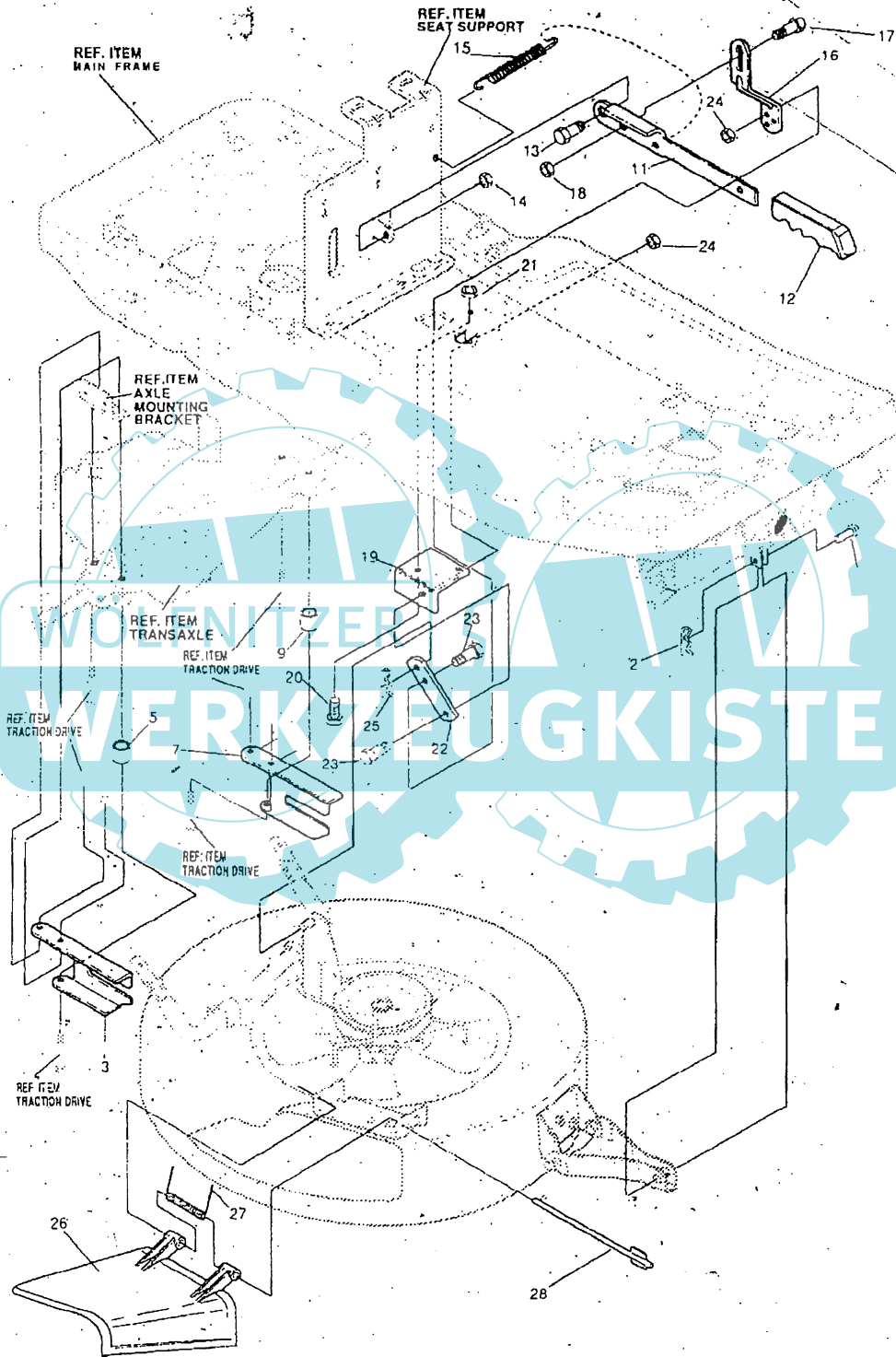
# 30" RIDING MOWER MODEL D3595-140

KEY#	PART#	DESCRIPTION	QTY
	314227-860	Frame	1
2	309612	Footpad RH	1
3	309613	Footpad LH	1
4	309235	Fastener, Ratchet	12
5	330220	Console	1
6	995346	Screw, 1/4-20 x 50 WA H H Tap	4
7	303 130	Assy., Headlight Lens	1
a	303260	Clip, Tinnerman	4
9	300347	Screw, #6 x .50 Black	4
10	314265-853	Seat Support	1
11	46901	Screw, 5/16-18 x .63 WA H HC	2
12	180075	Screw, 5/16-18 x .63 HHC	2
13	1498	Nut, 5/16-18 Reg H Ctr Lk	4
14	301330-853	Seat Bracket	1
15	180117	Screw, 3/8-16 x .56 HHC	2
16	1 4 9 9	Nut, 3/8-16 REG HX CTR LK	2
17	313476-853	Assy, Seat Plate	1
18	20507	Bolt, .437 x .156 HH SH 5/16-18	2
19	1498	Nut, 5/16-18 Reg H Ctr Lk	2
20	314185-853	Seat/Shift Bracket	1
21	120229	Screw, 5/16-18x.88 HHC	2
22	1498	Nut, 5/16-18 Reg H Ctr Lk	2
23	35498	Screw, 5/16-18 x .75 WA H H TAP	1
24	50520	Spacer	2
2 5	122017	Screw, 5/16-18 x 1.00-HHC	2
26	1498	Nut, 5/16-18 Reg H Ctr Lk	2
27	319136	Seat Spring	1
28	120392	Washer, Flat .281x.63x.065	1
29	120706	Screw, 1/4-20 x .50 HHC	1
30	1502	Nut, 1/4-20 Reg Hex Ctr Lk	1
31	319508	Fender	1
32	44811	Screw, 1/4-20 x .75 H WA TAP	4
33	305645	Fender Support	2
34	995346	Screw, 1/4-20 x .50 WA H H TAP	4
35	12599	Fastener, Velcro	2
	330310	Parts Manual	1
	328576	Operator's Manual	1



# 30" RIDING MOWER MODEL D3595-140

## -MOWER SUSPENSION ASSEMBLY



NOTE: ALWAYS USE ORIGINAL EQUIPMENT PARTS.  
Use of service/replacement parts other than original  
equipment parts may void your warranty.

ALL UNNUMBERED  
ITEMS ARE INTERCHANGEABLE  
WITH OPPOSITE SIDE

306432G

# 30" RIDING MOWER MODEL D3595-140

KEY#	PART#	DESCRIPTION	QTY.
1	47817	PIN, .495X1.750 CLEVIS-SHORT	1
2	56180	PIN, HAIR .091 DIA X 1.62 LG	1
3	321371	BRACKET, REAR SUPPORT RH	1
5	41462	SPACER .328 X .750 X .312	1
7	321370	BRACKET, REAR SUPPORT LH	1
9	41462	SPACER .328 X .750 X .312	1
11	313719-853	HANDLE, HEIGHT ADJUST	1
12	313763	GRIP, HANDLE, LIFT	1
13	54855	BOLT, .500X.345 HHSH 3/8-16	1
14	1499	NUT, 3/8-16 REGHXCTRLK	1
15	35410	SPRING .071 X .62 X 4.37	1
16	323897	BRKT, LINK UPPER 30" MOWER	1
17	54855	BOLT, .500X.345 HHSH 3/8-16	1
18	a1499	NUT, 3/8-16 REGHXCTRLK	1
19	323898	BRACKET, RER FRAME.	1
20	0 120229	SCREW, 5/16-18X .88 HHC	-1
21	0 1498	NUT, 5/16-18 REGHEXCTRLK	1
22	323899	BRKT, LINK LOWER 30" MOW	1
23	313560	BOLT, .500X.225 HHSH 5/16-18	2
24	0 1498	NUT, 5/16-18 REGHEXCTRLK	2
25	8260	PIN, HAIR .091 DIA X 1.62 LG	1
26	315814	CHUTE DEFLECTOR 30" DECK	1
27	314975	SPRING TORSION CHUTE DEF.	1
28	304424	ROD, PIVOT 40" DECK .312 X 7.25	1

0 Indicates STANDARD HARDWARE ITEMS.

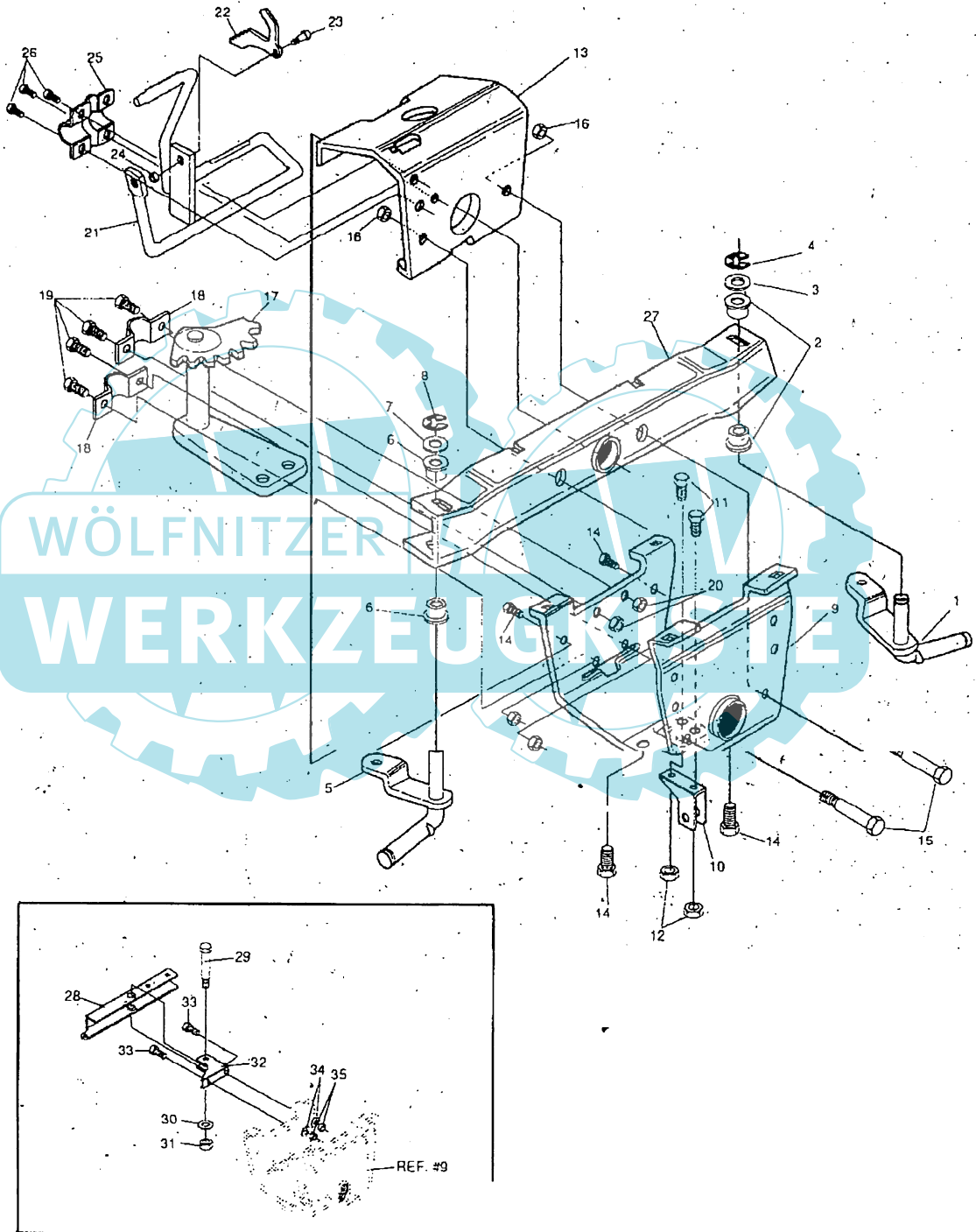


WÖLFNITZER

WERKZEUGKISTE

# 30" RIDING MOWER MODEL D3595-140

## PRE-PAINT FRONT AXLE ASSEMBLY



VOTE: ALWAYS USE ORIGINAL EQUIPMENT PARTS. Use of service/replacement parts other than original equipment parts may void your warranty.

ALL UNNUMBERED ITEMS ARE INTERCHANGEABLE WITH OPPOSITE SIDE

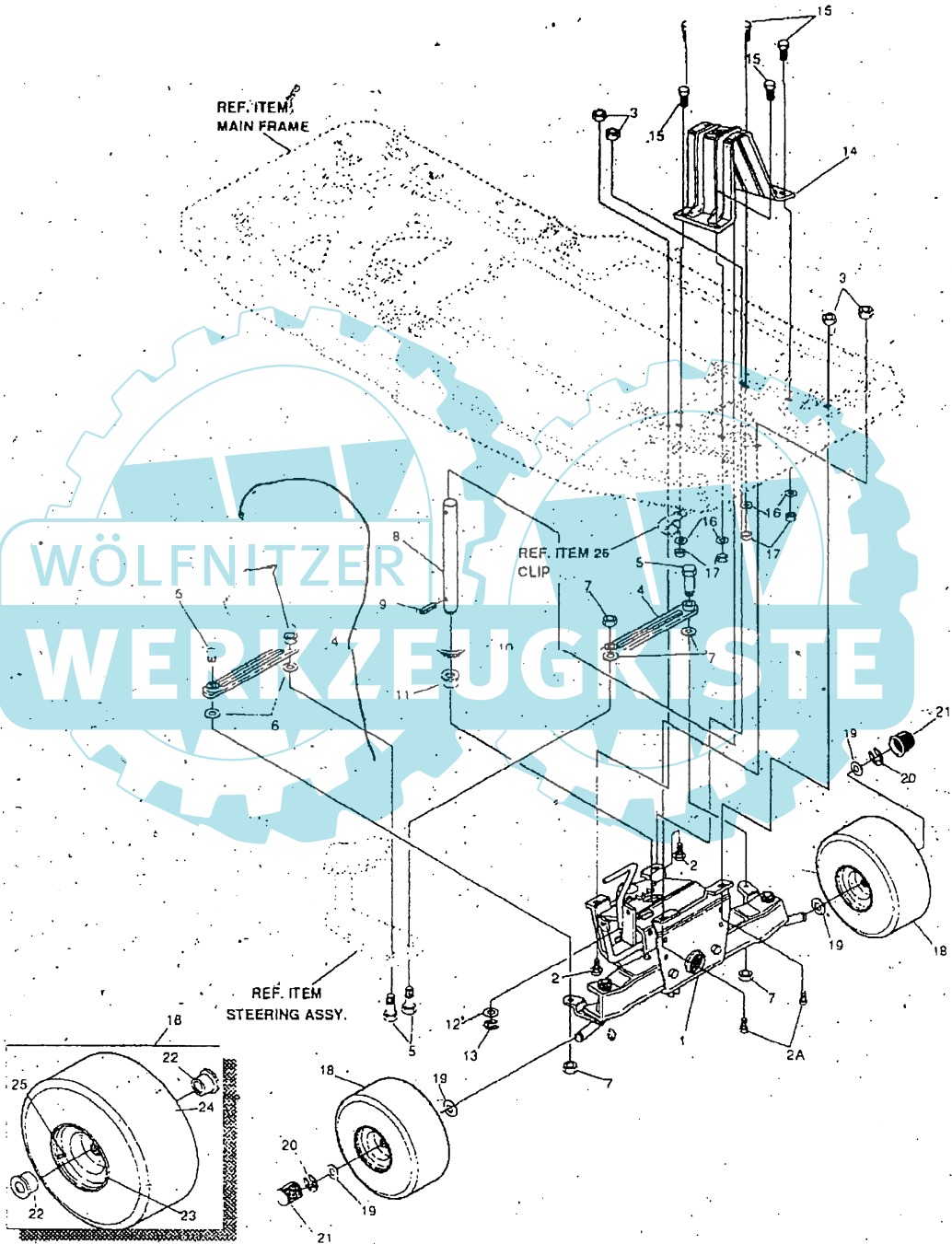
316219C

# 30" RIDING MOWER MODEL D3595-140

KEY#	PART#	DESCRIPTION	QTY.
1	316216	ASSEMBLY SPINDLE L.H.	1
2	12552	BUSHING, SPINDLE	2
3	4107	WASHER, FLAT .635 X 1.31 X .07	1
4	20859	RING, RET E. .48 X .04 TRU 5133-62	1
5	316217	ASSEMBLY SPINDLE, R.H.	1
6	12552	B U S H I N G , S P I N D L E	2
7	4107	WASHER, FLAT .635 X 1.31 X .07	1
8	20859	RING, RETAINING E .48 X .04TRU 5133-62	1
9	314228-853	BRACKET, AXLE, OUTER FRONT	1
10	302900	HANGER	1
11	180077	SCREW, 5/16-18 X .75 HHC GR5	2
12	1498	NUT, 5/16-18 REG H CTR LK	2
13	302799	AXLE BRACKET, INNER	1
14	35497	SCREW, 5/16-18 X .50 WAHH TAP	4
15	180138	SCREW, 3/8-16X 3.00 H HC GR5	2
16	1499	NUT, 3/8-16 REG HX CTR LK	2
17	302958-853	STEERING ASSEMBLY	1
18	302760	CLAMP, .625 DIA.	2
19	180077	SCREW, 5/16-18 X .75 H HC GR5	4
20	1498	NUT, 5/16-18 REG HEX CTR LK	4
21	303249-853	BRAKE ARM ASSEMBLY	1
22	302955-853	LATCH, PARKING BRAKE	1
23	3275	BOLT, .373 X .140 H H SH 1/4-20	1
24	1502	NUT, 1/4-20 REG H CTR LK	1
25	44112	BRACKET, CLUTCH AND BRAKE	1
26	35497	SCREW, 5/16-18 X .50 WA H H TAP	5
27	316218-853	FRONT AXLE ASSEMBLY	1
28	323903	ROCKER ARM MOWER ENGAGEMENT	1
29	310364	BOLT 500X1.1a HHC 3/8-16	1
30	1498	WASHER, FLAT .390X1.25X .119	1
31	1499	NUT, 3/8-16 REG HX CTR LK	1
32	323904	HANGER	1
33	180077	SCREW, 5/16-18 X .75 HHC GRD 5	2
34	120393	WASHER, FLAT .344X.69X.065	2
35	1498	NUT, 5/16-18 REGHXCTR LK	2

# 30" RIDING MOWER MODEL D3595-140

## FRONT AXLE & WHEELS ASSEMBLY



NOTE: ALWAYS USE ORIGINAL EQUIPMENT PARTS.  
Use of service/replacement parts other than original equipment parts may void your warranty.

ALL UNNUMBERED  
ITEMS ARE INTERCHANGEABLE  
WITH OPPOSITE SIDE

316220E

# 30" RIDING MOWER MODEL D3595-140

KEY#	PART#	DESCRIPTION	QTY
1		FRONT AXLE ASSY.	1
2	122007	SCREW, 5/16-18 X .75 HHC	2
2 A	126211	5/16-18X.63 C A R R	2
3	45174	NUT, 5/16-18 HEX WD FL LK'WHIZ	4
4	3 0 3 1 4 0	TIE ROD	2
5	122145	SCREW, 3/8-16 X 1.25 HHC	4
6	120382	WASHER, REG SPT LK .993 X .68 X .10	4
7	1499	NUT, 3/8-16 REG HEX CTR LK	4
8	3 2 3 9 0 6	SHAFT STEERING	1
9	454565	PIN. SPRING .250 DIA. X 1.25 LG	1
10	302766	G E A R , PINION	1
11	304010	BUSHING-STEERING	1
12	4107	WASHER, FLAT .635 X 1.31 X .07	1
13	20859	RING, RETAINING E .48 X .04 TRU 5133-62	1
1 4	323905	SUPPORT, STEERING SHAFT	1
15	48901	SCREW, 5/16-18 X .63 WA HHC	4
16	120393	WASHER, FLAT .344 X .69 X .065	4
17	1498	NUT, 5/16-18 REG HEX CTR LK	4
18		TIRE & RIM, PNEUMATIC 11 X 4.00-5	2
19	40677	WASHER, FLAT .640 X 1.25 X .06	4
20	20859	RING, RETAINING E .48 X .04 TRU 5133-62	2
21	36832	HUB CAP	2
22	301137	BEARING, WHEEL	2
23	301175	WHEEL	1
24		TIRE 11 X 4 - TURF (SEE TIRE TREAD PAGE)	1
25	24167	VALVE STEM	1
26		SEE ELECTRICAL SYSTEM	1

ORDER INDIVIDUAL PARTS.

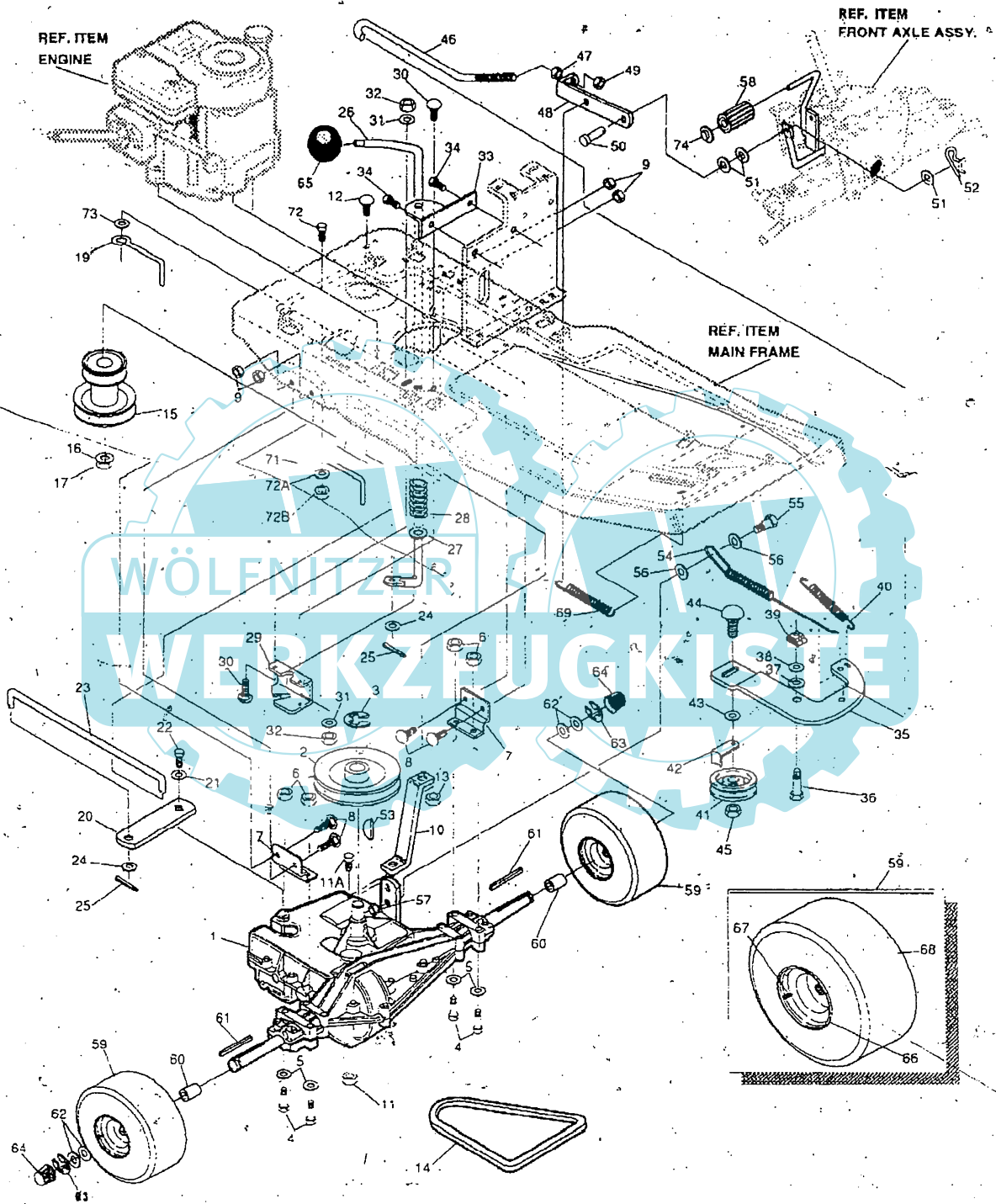
WOLFNITZER

WERKZEUGKISTE



# 30" RIDING MOWER MODEL D3595-140

## TRACTION DRIVE ASSEMBLY



NOTE: ALWAYS USE ORIGINAL EQUIPMENT PARTS.  
Use of service/replacement parts other than original  
equipment parts may void your warranty.

ALL UNNUMBERED  
ITEMS ARE INTERCHANGEABLE  
WITH OPPOSITE SIDE

32E424C

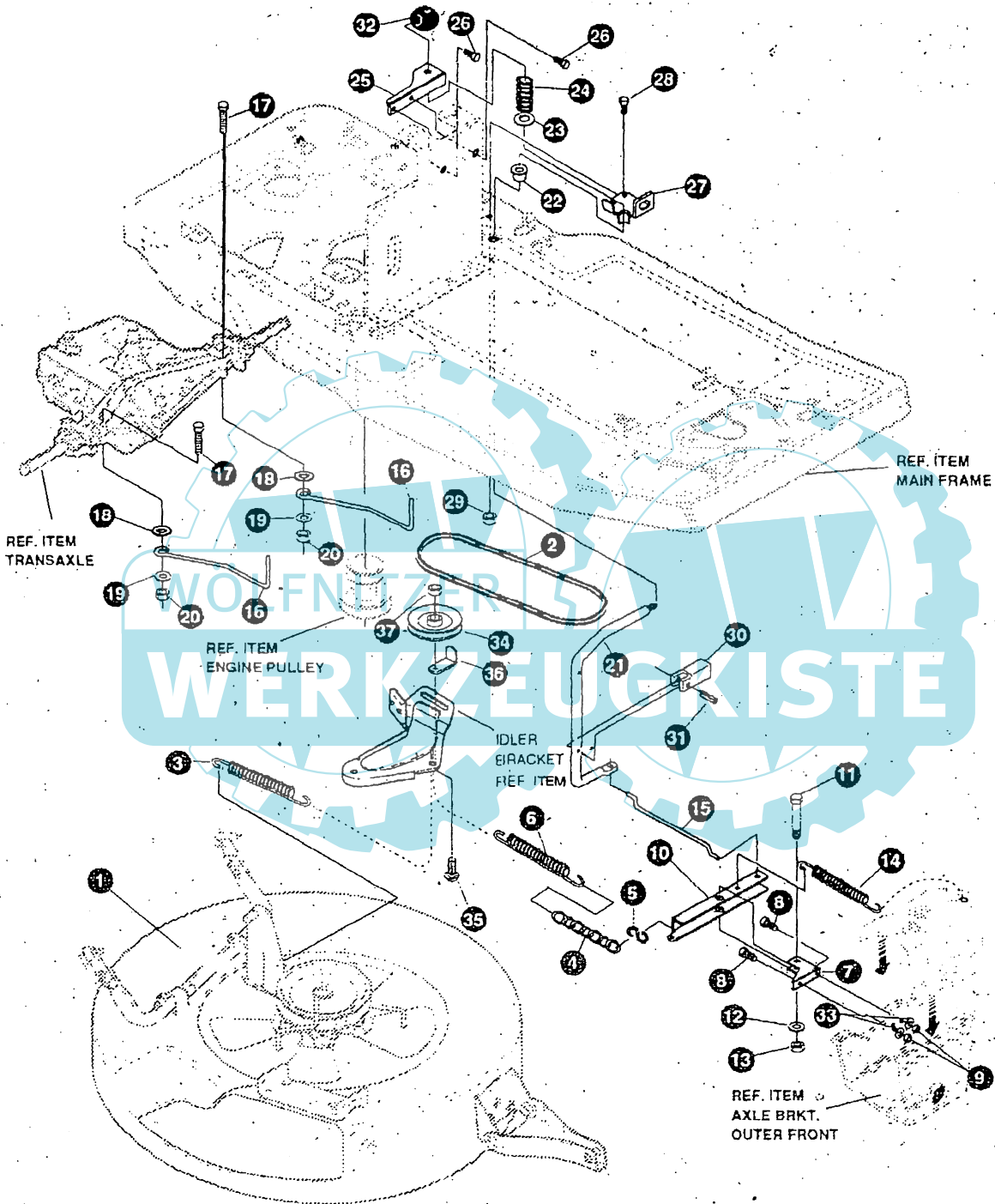
# 30" RIDING MOWER MODEL D3595-140

KEY#	PART#	DESCRIPTION	QTY.
1		TRANSAXLE	1
2	303 109	PULLEY, TRANSAXLE	1
3	22053	RING, RETEX .58 X .04 TRU 5100-62	1
4	122083	SCREW, 5/16-18 X 2.50 HHC GR2	4
5	120393	WASHER, FLAT .344 X .69 X .065	4
6	1498	NUT, 5/16-18 REG HEX CTR LK	4
7	9796	BRACKET, TRANSAXLE	2
8	126211	BOLT, 5/16-18 X .63 CARR	4
9	1498	NUT, 5/16-18 REG HEX CTR LK	4
10	324199	BRACKET, TRANSAXLE SUPPORT	1
11	1498	NUT, 5/16-18 REG HEX CTR LK	1
11A	122065	SCREW, 5/16-18 X 2.00	1
12	126211	BOLT, 5/16-18 X .63 CARR	1
13	1498	NUT, 5/16-18 REG HEX CTR LK	1
14	300575	BELT, V 4L	1
15	328040	PULLEY, ENG 3.315 OFF/3.87 D/3.00D	1
16	1 20383	WASHER, REG SPT LK .459 X .78 X .12	1
17	182761	SCREW, 7/16-20 X 2.50 HHC	1
19	55488	BELT GUIDE	1
20	323874	SHIFT LEVER, BRKT	1
21	57157	WASHER, .750 X .250	1
22	56255	SCREW, 1/4-28 X .75 NYL HH CGR8	1
23	321482	ROD, SHIFT CONNECTING	1
24	120394	WASHER, FLAT .406 X .81 X .065	2
25	137185	PIN, COTTER .125 DIA X 1.00 LG	2
26	309255	HANDLE, SHIFT	1
27	120396	WASHER, FLAT .531 X 1.06 X .095	1
28	301133	SPRING, SHIFT LEVER	1
29	309053	BRACKET DETENT SHIFT	1
30	126216	BOLT, 5/16-18 X .75 CARR	2
31	1 20393	WASHER, FLAT .344 X .69 X .065	2
32	1498	NUT, 5/16-18 REG HEX CTR LK	2
33	303098-853	SHIFT CONTROL BRKT.	1
34	995346	SCREW, 1/4-20 X .50 WA HH TAP	2
35	12593	ARM IDLER, TRANSAXLE DRIVE	1
36	1590	BOLT, .625 X .218 HH SH 5/16-18Z	1
37	4107	WASHER, FLAT .635 X 1.31 X .07	1
38	45602	WASHER, FLAT .333 X .a7 X .119	1
39	301124	TINNERMAN CLIP	1
40	35410	SPRING .071 X .62 X 4.37	1
41	35374	PULLEY, IDLER	1
42	39659	RETAINER, STRAP BELT	1
43	274517	WASHER, FLAT .406 X .73 X .063	1
44	45892	BOLT, 3/8-16 X 1.50 CARR	1
45	1499	NUT, 3/8-16 REG HEX CTR LK	1
46	3 2 3 5 3 2	ROD CLUTCH	1
47	271184	NUT, 5/16-18 HEX KEPS	1
48	321378	BRKT. CLUTCH BRAKE	1
49	1498	NUT, 5/16-18 REG HEX CTR LK	1
50	39522	PIN CLEVIS .312 X .812	1
51	1 20393	WASHER, FLAT .344 X .69 X .065	3
52	8260	PIN, HAIR .091 DIA X 1.66 LG	1
53	3021	KEY, WOODRUFF	1
54	326856	SPRING, BRAKE	1
55	25086	BOLT, .500 X .375 HH SH 5/16-18	1
56	308188	WASHER, FLAT .515 X 1.31 X .09	2
57	1498	NUT, 5/16-18 REG HEX CTR LK	1
58	52840	PEDAL PAD	1
59		TIRE 8 RIM, PNEUMATIC	2
60	300588	SPACER	2
61	52928	KEY, SQUARE .1 a7 SQ X 2.25LG	2
62	42815	WASHER, FLAT .755 X 1.53 X .07	4
63	36625	RING, RET EX .57 X .05 TRU5133-75	2
64	4 0 3 9 4	CAP, HUB	2
65	55514	SHIFT KNOB	1
66	305036	WHEEL	1
67	24167	VALVE STEM	1
68		TIRE 16 X 6.50 - 8 TURF (REFER TO TIRE TREAD PAGE)	1
69	53704	SPRING, 536 OD X .047 X 3.4	1
70	55488	BELT GUIDE	1
71	138489	WASHER, EX LK 384 X .69 X .04	1
72	122017	SCREW, 5/16-18 X 1.00	1
72A	120394	WASHER, FLAT .406 X .81 X .065	1
720	1498	NUT, 5/16-18 X .75	1
73	138489	WASHER, EX LK .384 X .69 X .04	1
74	44582	CAP, PUSH NUT	1

\*CONTACT YOUR NEAREST TRANSAXLE DEALER FOR PARTS AND SERVICE.  
 ^ ORDER INDIVIDUAL PARTS. SEE TIRE TREAD PAGE.

# 30" RIDING MOWER MODEL D3595-140

## MOWER DRIVE ASSEMBLY



NOTE: ALWAYS USE ORIGINAL EQUIPMENT PARTS.  
Use of service/replacement parts other than original equipment parts may void your warranty.

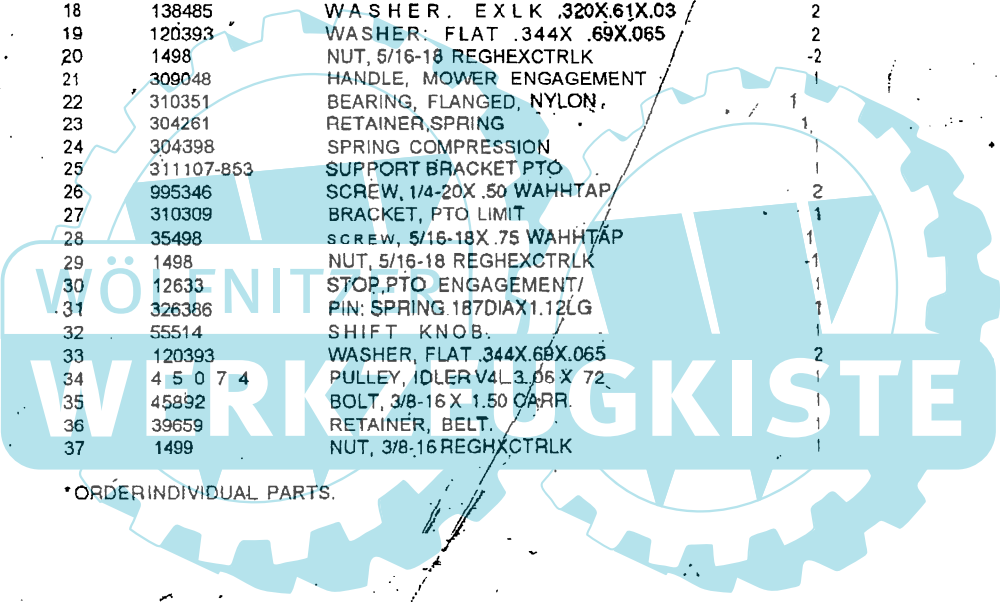
ALL UNNUMBERED ITEMS ARE INTERCHANGEABLE WITH OPPOSITE SIDE

315603H

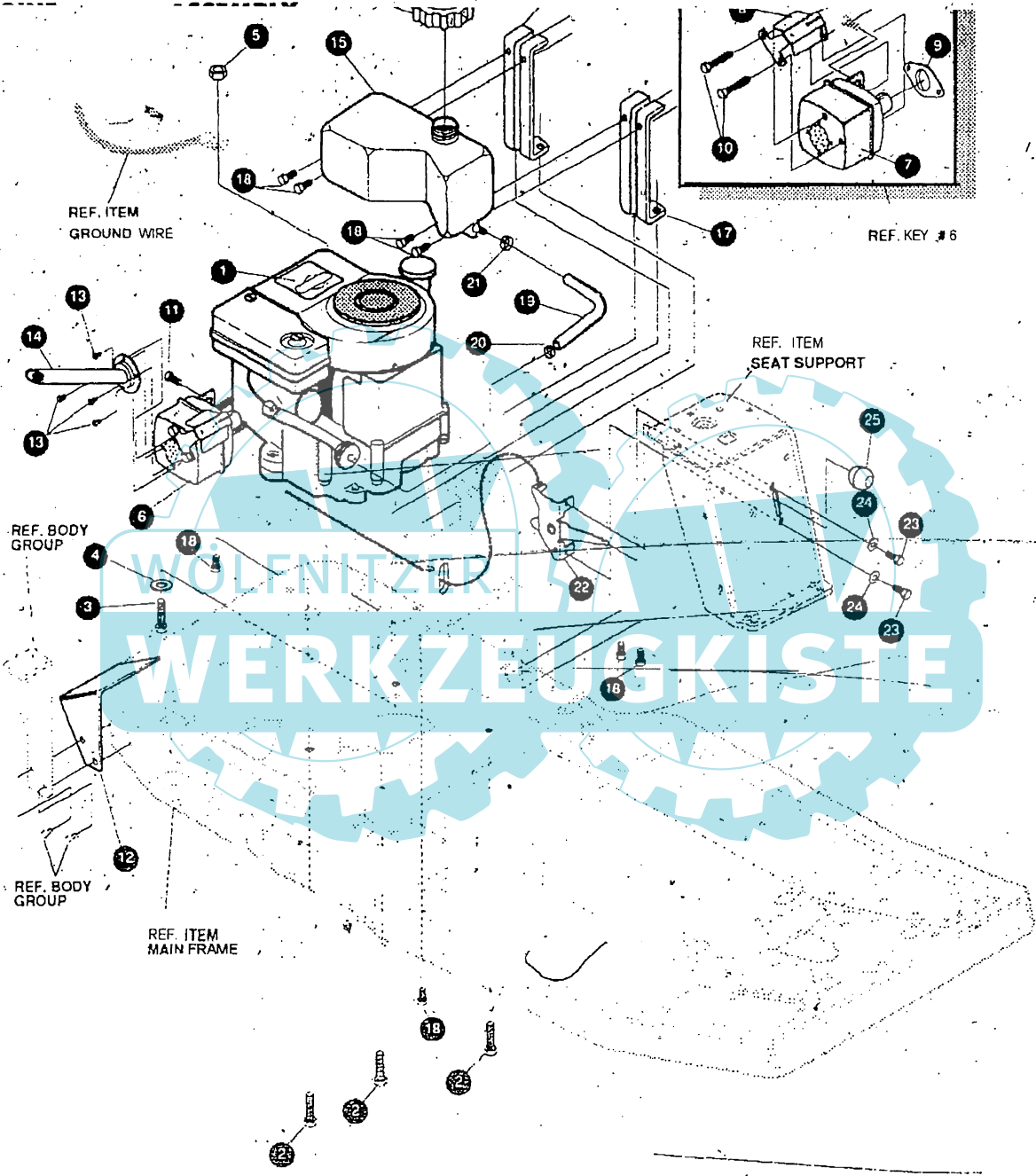
# 30" RIDING MOWER MODEL D3595-140

KEY#	PART#	DESCRIPTION	QTY.
1		ASSY., DECK, PRE-PAINT 30"	1
2	56537	BELT, V 4L 50.5LG	1
3	35410	SPRING .071 X .62 X 4.37	1
4	310428	CHAIN, JACK	0.500 FT
5	310734	HOOK, S, 10 GA. STEEL	1
6	300683	SPRING, .75X6.3X.105 TENSION	1
7	323904	H A N G E R	1
8	180077	SCREW, 5/16-18X .75 HHC	2
9	1498	NUT, 5/16-18 REGHEXCTRLK	2
10	323903	ROCKER ARM, MOWER ENGAGEMENT	1
11	310364	BOLT, .500X1.18, FHSH 3/8-16	1
12	845	WASHER, FLAT .390X1.25X.119	1
13	1499	NUT, 3/8-16 REGHXCTRLK	1
14	35410	SPRING .071X.62 X 4.37	1
15	309049	ROD, CONNECTING	1
16	310388	GUIDE, BELT	2
17	180091	SCREW, 5/16-18X2.50 HHC	2
18	138485	W A S H E R . E X L K .320X.61X.03	2
19	120393	WASHER, FLAT .344X .69X.065	2
20	1498	NUT, 5/16-18 REGHEXCTRLK	2
21	309048	HANDLE, MOWER ENGAGEMENT	1
22	310351	BEARING, FLANGED, NYLON	1
23	304261	RETAINER, SPRING	1
24	304398	SPRING COMPRESSION	1
25	311107-853	SUPPORT BRACKET PTO	1
26	995346	SCREW, 1/4-20X .50 WAHHTAP	2
27	310309	BRACKET, PTO LIMIT	1
28	35498	SCREW, 5/16-18X .75 WAHHTAP	1
29	1498	NUT, 5/16-18 REGHEXCTRLK	1
30	12633	STOP, PTO ENGAGEMENT/	1
31	326386	PIN: SPRING 187DIA X 1.12LG	1
32	55514	SHIFT KNOB	1
33	120393	WASHER, FLAT .344X.69X.065	2
34	4 5 0 7 4	PULLEY, IDLER V4L 3.06 X 72	1
35	45892	BOLT, 3/8-16 X 1.50 CARR.	1
36	39659	RETAINER, BELT	1
37	1499	NUT, 3/8-16 REGHXCTRLK	1

\*ORDER INDIVIDUAL PARTS.



# 30" RIDING MOWER MODEL D3595-140



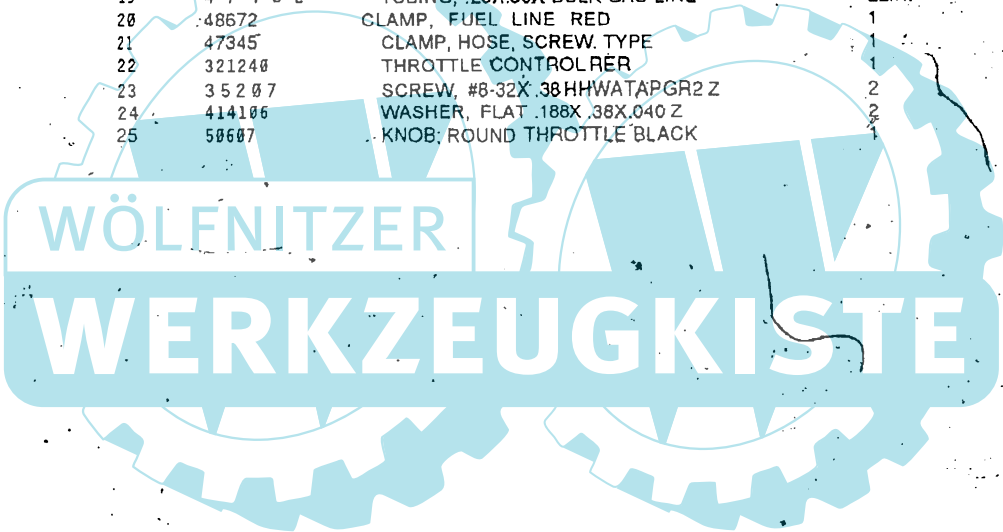
MOTE: ALWAYS USE ORIGINAL EQUIPMENT PARTS.  
Use of service/replacement parts other than original  
equipment parts may void your warranty.

ALL UNNUMBERED  
ITEMS ARE INTERCHANGEABLE  
WITH OPPOSITE SIDE

330206A

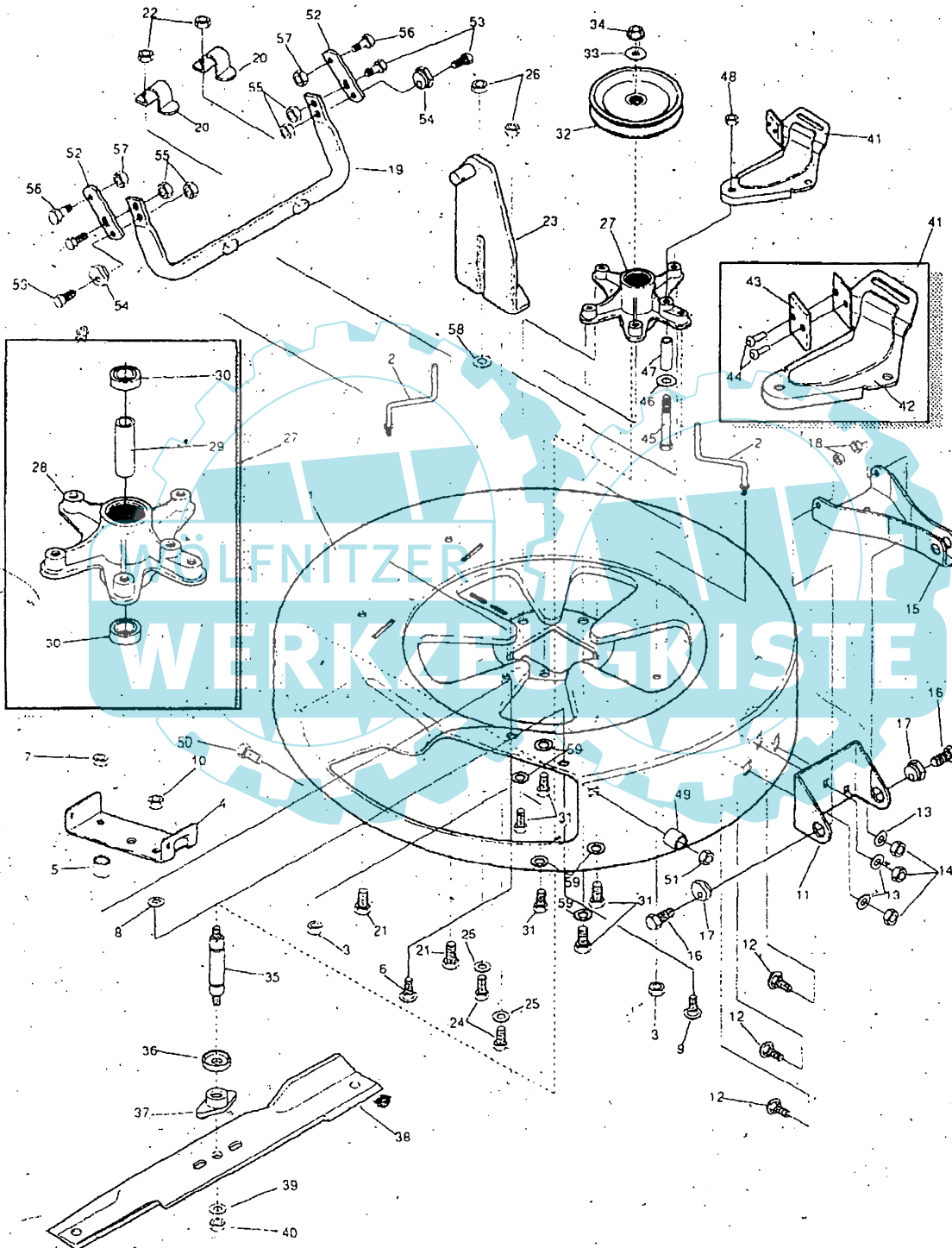
**30" RIDING MOWER MODEL D3595-140**

KEY#	PART#	DESCRIPTION	QTY.
1	ENGINE	B&S 10VER ELEC RER(SEE ENGINE MANUAL)	1
2	50947	SCREW, 3/8-16 X 1.25 WAHHTAPBLKP	3
3	180083	SCREW, 5/16 - 18 X 1.50 HHC GR5 Z	1
4	138485	WASHER, EXLK .320X.61X.03 Z	1
5	44108	NUT, 5/16-18 HWDFLCTRLK Z	1
6	305404	MUFFLER ASSY B&S SQ. LO-TONE	1
7	305406	MUFFLER B&S SQ. LO-TONE 10-12 HP	1
8	305409	SHIELD, MUFFLER B&S SQ. LO-TONE	1
9	46708	GASKET, MUFFLER	1
10	305407	BOLT, .437X4.340 HSH5/16-18BL	2
11	385410	S C R E W , 1/4-20X .50 HHCSEMS	1
12	12550-853	MP DEFLECTOR, HEAT	1
13	57366	SCREW, 10-16X .50 DRILLTITE 2	4
14	311721-853	MP PIPE ASSY, 10 BBS EXHAUST	1
15	3 1 4 9 8 8	TANK, GAS-GP, 1.3 GAL. F-11	1
16	12501	CAP, FUEL -2.5" THROAT	1
17	303160-853	ML SUPPORT, GAS TANK, RER F-11	2
18	995346	SCREW, 1/4-20X .50 WAHHTAP	8
19	4 7 4 5 2	TUBING, .25X.50X BULK-GAS LINE	22IN.
20	48672	CLAMP, FUEL LINE RED	1
21	47345	CLAMP, HOSE, SCREW. TYPE	1
22	321240	THROTTLE CONTROL RER	1
23	3 5 2 0 7	SCREW, #8-32X .38 HHWATAPGR2 Z	2
24	414106	WASHER, FLAT .188X .38X.040 Z	2
25	58607	KNOB, ROUND THROTTLE BLACK	1



# 30" RIDING MOWER MODEL D3595-140

## PRE-PAINTED DECK ASSEMBLY



NOTE: ALWAYS USE ORIGINAL EQUIPMENT PARTS.  
Use of service/replacement parts other than original equipment parts may void your warranty.

ALL UNNUMBERED  
ITEMS ARE INTERCHANGEABLE  
WITH OPPOSITE SIDE

3135891J

[www.ersatzteil-service.de](http://www.ersatzteil-service.de)

# 30" RIDING MOWER MODEL D3595-140

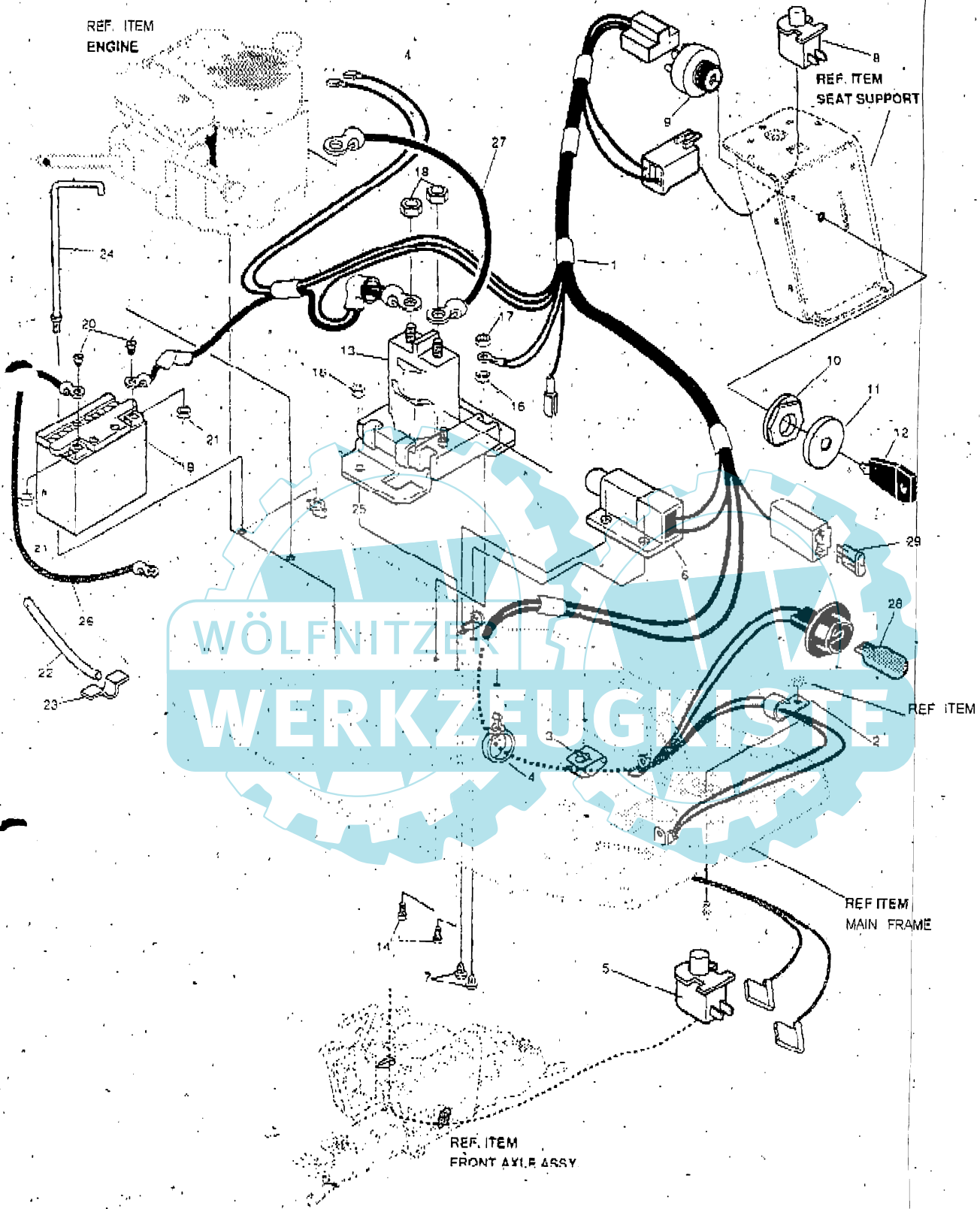
KEY#	PART#	DESCRIPTION	QTY.
1	321982	DECK, MOWER 30 INCH	1
2	57318	GUIDE, BELT 5/16-18 THD	2
3	1496	NUT, 5/16-18 REGHEXCTRLK	2
4	302364	BRACKET CHUTE MOUNT	1
5	314702	SPACER, .344X1.00X.500	1
6	120230	BOLT, 5/16-18X1.25 CARR	1
7	1498	NUT, 5/16-18 REGHEXCTRLK	1
8	45802	WASHER, FLAT 333X .87X.119 Z	1
9	126216	BOLT, 5/16-18X 75 CARR GR2 Z	1
10	1498	NUT, 5/16-18 REGHEXCTRLK	1
11	311237	BRACKET, MOUNTING, FRONT	1
12	57072	BOLT, 5/16-18X .63 CARR	3
13	120393	WASHER, FLAT, .344X .69X.065	3
14	1498	NUT, 5/16-18 REGHEXCTRLK	3
15	311236	BRACKET, BAR, TOW, FRONT	1
16	122017	SCREW, 5/16-18X1.00 HHC	2
17	58247	ADJUSTING NUT	2
18	1498	NUT, 5/16-18 REGHEXCTRLK	2
14	313372	ASSY., TUBE, PIVOT	1
20	51985	SUPPORT, PIVOT TUBE	2
21	180077	SCREW, 5/16-18X .75 HHC	2
22	1498	NUT, 5/16-18 REGHEXCTRLK	2
23	314119	ASSY LIFT BRKT	1
24	180077	SCREW, 5/16-18X.75 HHC GR5 Z	2
25	120393	WASHER, FLAT, .344X .69X.065	2
26	1498	NUT, 5/16-18 REGHEXCTRLK	2
2	7 313586 313588	ASSEMBLY, QUILL	1
28	314272	QUILL, MACHINED CASTING	1
29	314273	TUBE, SPACER	1
30	313576	BEARING, BALL, 6204-2RS-O	2
31	50634	SCREW, 5/16-18X.88 WAHHTAP	5
52	314273	PULLEY ASSEMBLY	1
33	22265	WASHER, FLAT .515X1.38X.119PL	1
34	1500	NUT, 1/2-13 REGHXCTRLK	1
35	314271	SHAFT, QUILL 30" MOWER	1
36	313577	SHIELD, DUST, BEARING	1
37	313584	HUB, BLADE ADAPTOR	1
38	314826	BLADE, 30" TO MOWER .7 WING	1
39	22265	WASHER, FLAT .515X1.38X.119PL	1
40	1500	NUT, 1/2-13 REGHXCTRLK	1
41	12229	BRACKET, IDLER ASSEMBLY	1
42	313510	BRACKET, ARM, IDLER	1
43	306973	BRAKE PAD - HARD 232AF	1
44	41601	RIVET, OVSET .187DIA X 50LG	2
45	18009 T	SCREW, 5/16-18X2.50 HHC	1
46	45802	WASHER, FLAT .333X.87X.119	1
47	314824	SPACER, .322 X .625 X 1.810	1
48	44108	NUT, 5/16-18 HWDFLCTRLK	1
49	50520	SPACER	1
50	126216	BOLT, 5/16-18X 75 CARR	1
51	1498	NUT, 5/16-18 REGHEXCTRLK	1
52	314099	BRACKET, BAR, REAR STABIL	2
53	122017	SCREW, 5/16-18X1.00 HHC	4
54	58247	ADJUSTING NUT	2
55	1498	NUT, 5/16-18 REGHEXCTRLK	4
56	51940	BOLT, 500X 437 HSSH 3/8-16	2
57	1498	NUT, 3/8-16 REGHXCTRLK	2
58	45802	WASHER, FLAT 333 X .87 X .119Z	1
59	138485	WASHER, EXLK .320X.61X.03	5



# 30" RIDING MOWER MODEL D3595-140

[www.ersatzteil-service.de](http://www.ersatzteil-service.de)

## ELECTRICAL ASSEMBLY



NOTE: ALWAYS USE ORIGINAL EQUIPMENT PARTS.  
Use of service/replacement parts other than original equipment parts may void your warranty.

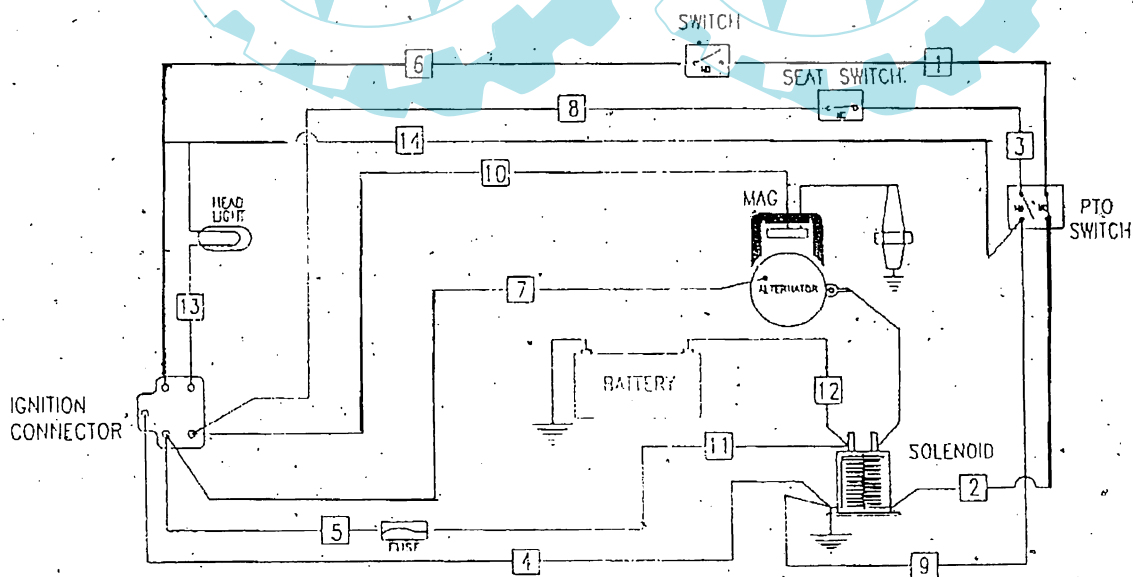
ALL UNNUMBERED  
ITEMS ARE INTERCHANGEABLE  
WITH OPPOSITE SIDE

321957F

# 30" RIDING MOWER MODEL D3595-140

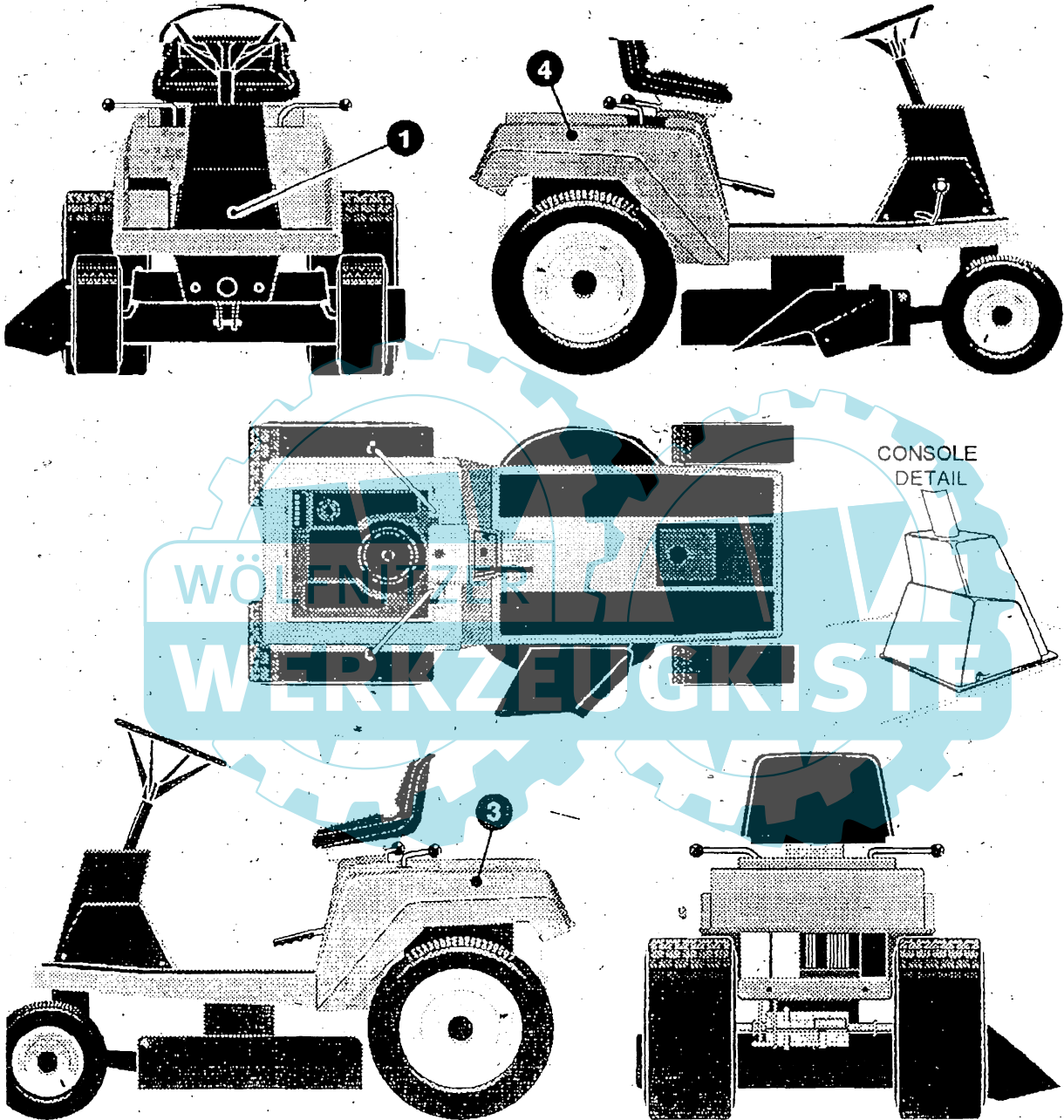
KEY#	PART#	DESCRIPTION	QTY.
1	321951	HARNES, ELEC. RERC28-11 B&S	1
2	57569	RETAINER, .3110X.62X.03 WIRE	1
3	309098	CLIP, TRW #C4490-022-27	1
4	309698	CLIP, WIRE ROUTING, SNAP-IN	1
5	326653	SWITCH, SNAP MNT NO .055/.,116 BLK	1
6	57476	SWITCH, SCR MNT DP NC	1
7	57220	SCREW, #12 X SO PHNHTAP	2
a	326654	SWITCH, SNAPMNT NC, 140 BLUE	1
9	327354	SWITCH, IGNITION & LIGHTS	1
10	327352	NUT, 5/8-32 IGN SWIT	1
11	300194	BOOT, SWITCH	1
12	327350	KEY, IGNITION SWITCH	1
13	53716	SOLENOID, NEW CLUM	1
14	187745	SCREW, 1/4-20X .75 HXSEMMA	2
16	1502	NUT, 1/4-20 REG HEX CTRLK	2
17	271172	NUT, 1/4-20 REG HEX KEPS	1
18	271187	NUT, 5/16-24 HKEPS	2
19	55472	BATTERY, YUASA 12N14	1
20	55529	SCR, METRIC, 6X1X11	1
21	55530	NUT, METRIC, 6X1 HEX	1
22	55636	DRAIN TUBE, BATT	1
23	41482	CLIP, 1 3 8 0 LG 255ID PRESS WIRE	1
24	323648	'HOLD DOWN BRKT'	1
25	325232	NUJ. WING 1/4-20 NYLON	1
26	55511	WIRE, GROUND, 12.5"	1
27	322698	WIRE, STARTER,	1
28	52572	BULB, HEADLAMP	1
29	302031	FUSE SPADE TYPE 32V 15A	1

SCHEMATIC DRAWING



# 30" RIDING MOWER MODEL D3595-140

DECALS (DECORATIVE)

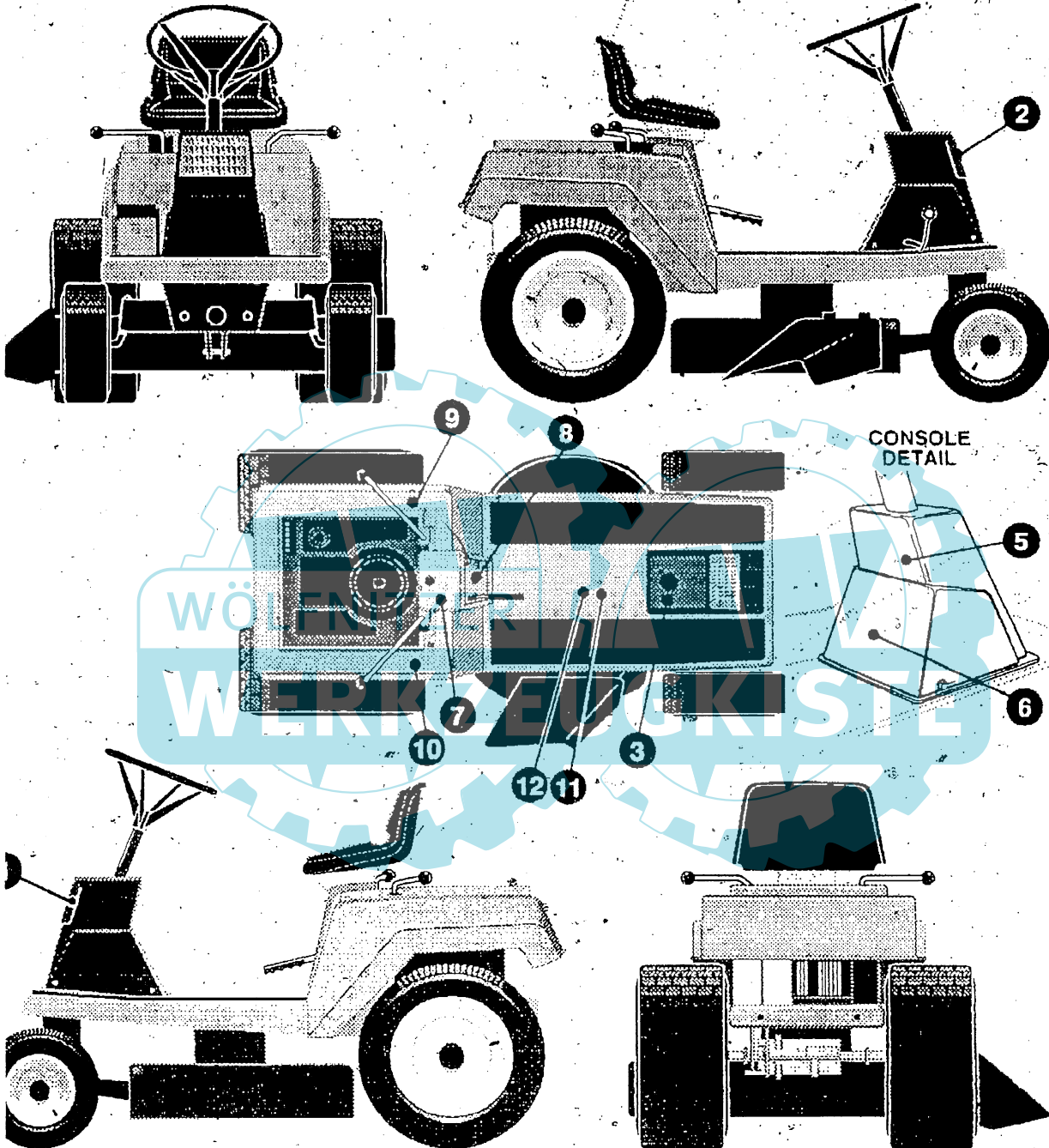


KEY#	PART#	DESCRIPTION	QTY.
1.	3 3 0 3 5 4	DECAL, WESTWOOD FRT CONSOLE	1
2.		REFERENCE ONLY	1
3.	330355	DECAL, FENDER LH	1
4.	330356	DECAL, FENDER RH	1

330219A

# 30" RIDING MOWER MODEL D3595-140

DECALS (INSTRUCTIONAL)

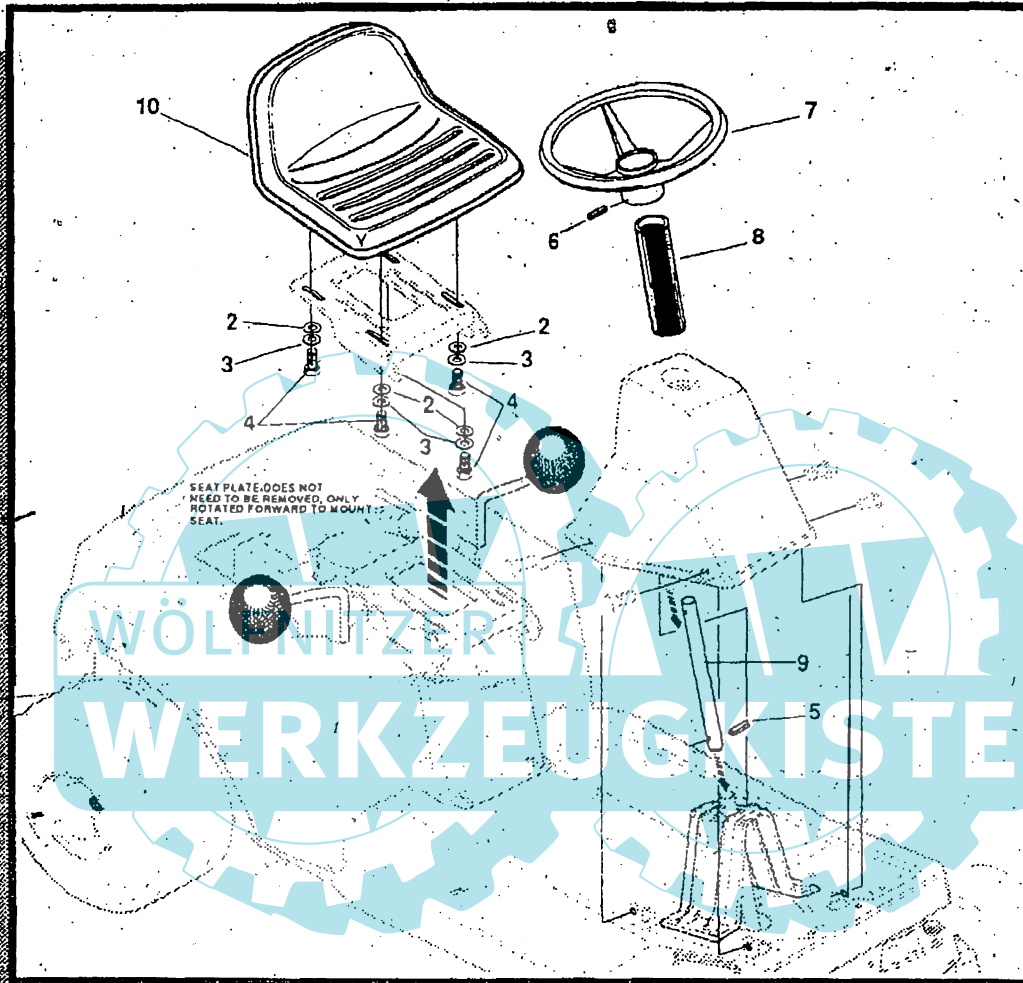


KEY#	PART#	DESCRIPTION	QTY
1.	306557	DECAL, NOMA LENS, LH C-2 LITE	1
2.	306558	DECAL, NOMA LENS, RH C-2 LITE	1
3.	317348	DECAL, PARK'N/BRAKE ISO	1
4.		REFERENCE O N L Y	1
5.	311227	DECAL, HEARING PROTECTION	1
6.	327462	DECAL, INSTR EXPORT	1
7.		DECAL, FRENCH SAFETY CERT.	1
8.	310456 320704	DECAL, CONTROL 30 <sup>HP</sup> /LITE	1
9.	305397	DECAL, PTO ENGAGEMENT, ISO	1
10.	311232	DECAL, SHIFT, 5SP, ISO DOM	1
11.	305770	DECAL CAUTION TRIANGLE EUROPE	1
12.	327461	DECAL, DDECK, WARN, GR, FR	1

327728A

# 30" RIDING MOWER MODEL D3595-140

## CUSTOMER ASSEMBLY



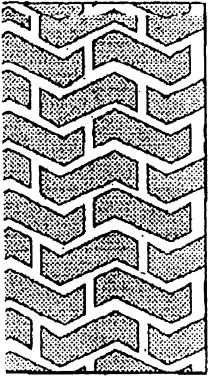
### CUSTOMER ASSEMBLY VIEW

KEY#	PART#	DESCRIPTION	QTY
2	120393	WASHER, FLAT .344 X .69 X .065	4
3	120638	WASHER, HV SPT LK .328 X .60 X .11	4
4	122007	SCREW, 5/16-18 X .75 HHC GR2	4
5	417375	PIN, SPRING .187 DIA X 1.25 LG MD	4
6	456836	PIN, SPRING .250 DIA X 2.25 LG HVPL	
7	52955	WHEEL, STEERING	
8	316259	TUBE, DECORATIVE	
9	300796	TUBE-STEERING	
10	304315	SEAT	

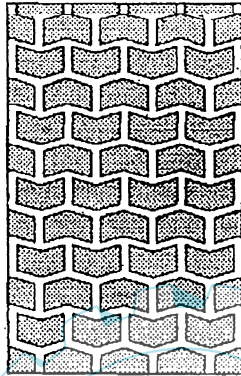
3240793

**30" LAWN TRACTOR MODEL D3595-140**

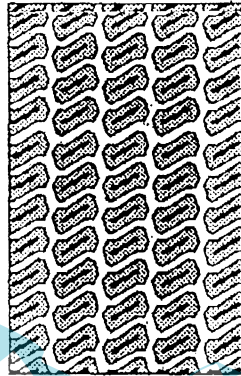
**TREAD PATTERNS**



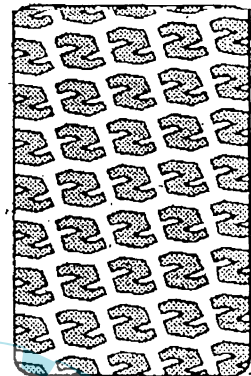
"A"



"B"



"C"



"D"

TIRE SIZE	"A"	"B"	"C"	"D"
11x4.00-5.	42295	319679		
13x5.00-6	41060	319680		
15 X 6.00 -6	39830	316702	301140	313952
16x6.50-8	41081	319682		314539
18x8.50-8	319683	317400		
18 X 9.50 - 8	41106	31 670'1		313950
20x8.00 - 8	319685	319684	57164	314584
20x10.00-8	58276	319686		313654
20 X 10.00 - 10	55893	319687		
23 X 9.50 - 12	53655	319690	3'9689	314370

WÖLFNITZER

WERKZEUGKISTE

## ACCESSORIE

Contact the dealer where your tractor was purchased for the available accessories. If you are unable to contact the dealer write to the address on the front cover of this manual.

Model	Description	Rear	Engine	Rider
708-16	Bagger - Fits 32" Side Discharge			
708-17	Bagger - Fits 36" Side Discharge & 30" Top Discharge			
709-02	Front Weight Box - holds 35 lbs.			
648-16	Lawn Sweeper w/dump Release			
714-00	Mulching Kit - 30" Top Discharge			

Model	Description	Lawn Tractor
708-22	Bagger - Fits 30" Side Discharge	
708-13	Bagger - Fits 36", 38", 39" & 45" Side Discharge	
705-04	36" Two-Stage Snowblower - Fits 36", 38", 39", & 45" Side Discharge	
361-06	42" Snowblade - Fits 36", 38", 39", & 45"	
592-00	Tire Chains - 18" x 6.50"	
585-00	Tire Chains - 18" x 9.50" & 20" x 8"	
672-01	Wheel Weights - Front - 1 pr. w/mtg. hdw. - Fits 15" tires	
673-02	Wheel Weights - Rear - 1 pr. w/mtg. hdw. - Fits 18" & 20" tires	
709-03	Front Weights - Fits 30" & 32" Side Discharge	
348-16	Lawn Sweeper w/dump Release	
714-00	Mulching Kit - 30" Top Discharge	

Model	Description	Garden Tractor - Light Ground Engaging
708-13	Bagger - Fits 36", 38", 39", & 45" Side Discharge	
705-04	36" Two-Stage Snowblower - Fits 36", 38", 39", & 45"	
361-06	42" Snowblade - Fits 36", 38", 39", & 45"	
672-01	Wheel Weights - Front - 1 pr. w/mtg. hdw. - Fits 15" tires	
373-02	Wheel Weights - Rear - 1 pr. w/mtg. hdw. - Fits 18" & 20" tires	
648-16	Lawn Sweeper w/dump Release	
367-02	Sleeve Hitch - w/lift bar - Fits 45"	
668-01	Adaptor (sleeve hitch) for use w/23" tires	
706-00	Tire Chains - 20" x 10"	
371-00	Tire Chains - 23" x 9.50"	
672-02	Wheel Weights - Front - 1 pr. w/mtg. hdw. Fits 16" tires	
673-00	Wheel Weights - Rear - 1 pr. w/mtg. hdw. Fits 23" tires	
674-01	10" One Bottom Moldboard Plow	
675-01	Cultivator - 7 row - Adj. 6" - 42" width	
676-6-1	Disc Harrow - 8" & 11" disc - Adj. width & disc angle	
677-02	Tiller - 5 H.P. Self-Powered - 28" width	

Model	Description	Four Wheel Steer
708-14	Bagger - Fits 40" & 46" Side Discharge	
705-05	42" One-Stage Snowblower - Fits 40" & 46"	
661-07	48" Snowblade - Fits 40" & 46"	
709-04	Rear Weight Box for 40" & 46"	
648-16	Lawn Sweeper w/dump Release	
706-00	Tire Chains 20" x 10"	
671-00	Tire Chains 23" x 9.50"	
672-02	Wheel Weights - Front - 1 pr. w/mtg. hdw. Fits 16" tires	
373-00	Wheel Weights - Rear - 1 pr. w/mtg. hdw. Fits 23" tires	
372-01	Wheel Weights - Front - 1 pr. w/mtg. hdw. Fits 15" tires	
373-02	Wheel Weights - Rear - 1 pr. w/mtg. hdw. Fits 18" & 20" tires	

Model	Description	Two Wheel Steer Garden Tractor
367-04	Sleeve Hitch - w/lift bar Fits 46"	
374-01	10" One Bottom Moldboard Plow	
375-01	Cultivator - 7 row - Adj. 6" - 42" width	
376-01	Disc Harrow 8" & 11" Disc - Adj. width & disc angle	
377-02	Tiller 5 H.P. Self-Powered 28" width	
348-16	Lawn Sweeper w/dump Release	

requires a sleeve hitch