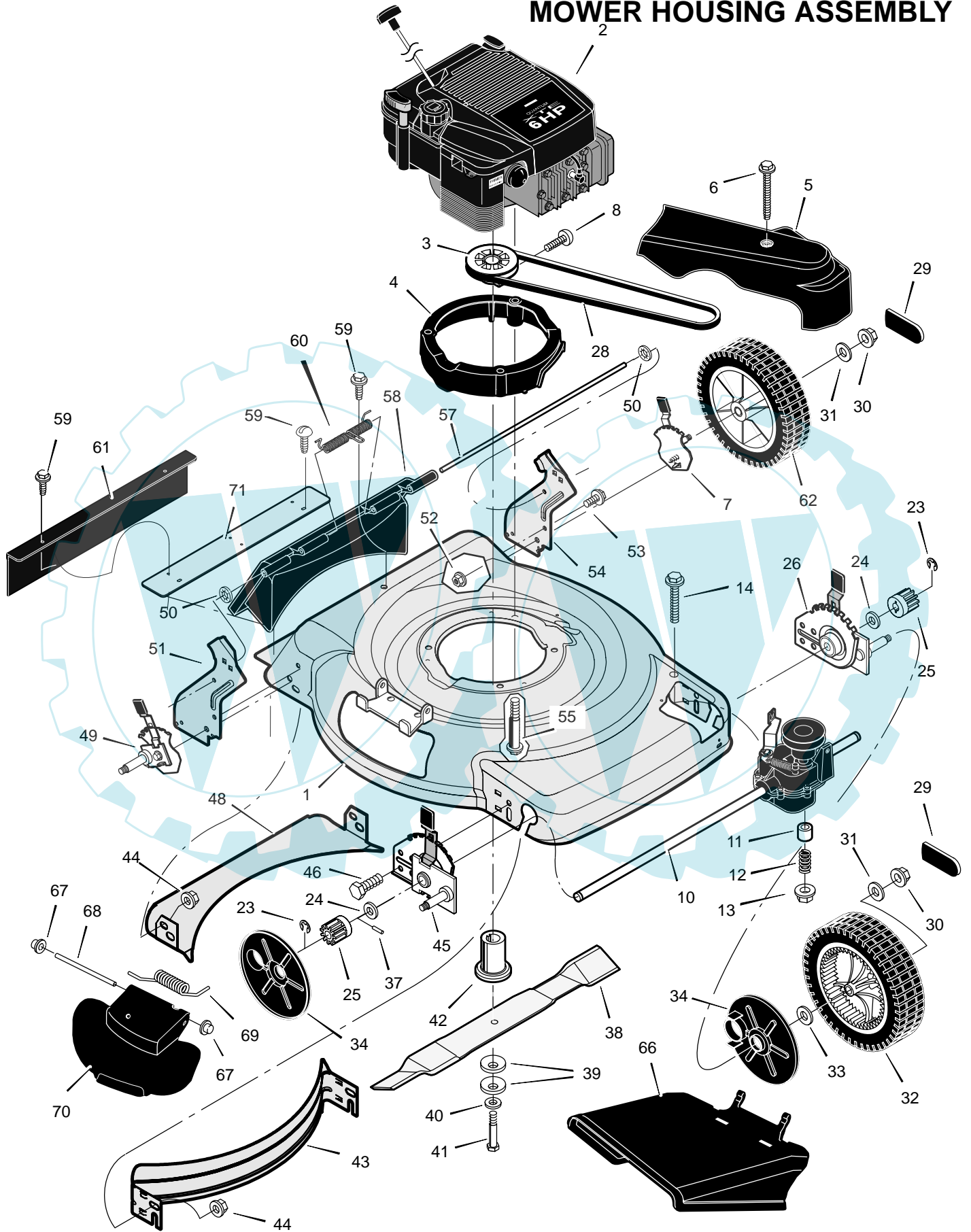


# 228610x68C

## MOWER HOUSING ASSEMBLY



## 228610x68C

### MOWER HOUSING ASSEMBLY

Key No.	Description	Part No.	Key No.	Description	Part No.
1	Housing	1101616E700	40	Washer	17x124
2	Engine *	-----	41	Bolt	01x144
3	Pulley, Drive	1101653	42	Adapter, Blade	1101336
4	Spacer, Engine	1101331	43	Baffle, Front **	672915E701
5	Cover, Belt	1101596	44	Nut, Flange	015x68
6	Screw	26x304	45	Adjuster, Right Front Height	1101028
7	Adjuster, Left Rear Height	672605	46	Bolt	001x85
8	Screw	26x303	48	Baffle, Rear **	672916E701
10	Transmission – <b>Note: There are no internal serviceable parts for the transmission.</b>	1101571	49	Adjuster, Right Rear Height	672604
11	Spacer	043844	50	Push Retainer ***	028x49
12	Spring, Compression	164x27	51	Bracket, Right Handle	1101238E700
13	Nut	015x88	52	Nut, Flange	015x79
14	Bolt	01x156	53	Bolt	001x45
23	E-Ring	0011x16	54	Bracket, Left Handle	1101239E700
24	Washer	17x186	55	Bolt, Engine	025x11
25	Gear, Pinion	071792	57	Rod, Pivot ***	215x21
26	Adjuster, Left Front Height	1101029	58	Door, Rear	1101070
28	Belt	37x123	59	Screw	26x245
29	Cap, Hub	672122	60	Spring ***	166x44
30	Nut, Flange	015x84	61	Guard, Rear	1101105
31	Washer	17x169	62	Wheel & Tire, Rear	071132
32	Wheel & Tire, Drive	071133	66	Deflector, Chute	1101097
33	Washer	017x75	67	Push On Cap	028x42
34	Cover, Dust	071780	68	Rod, Pivot	215x19 Z
37	Pin, Drive	043629	69	Spring, Torsion	166x38
38	Blade	1101120E701	70	Cover, Mulch	1101098
39	Washer, Belleville	17x137	71	Extension, Rear **	672111E701
			--	Book, Instruction	F-040418L

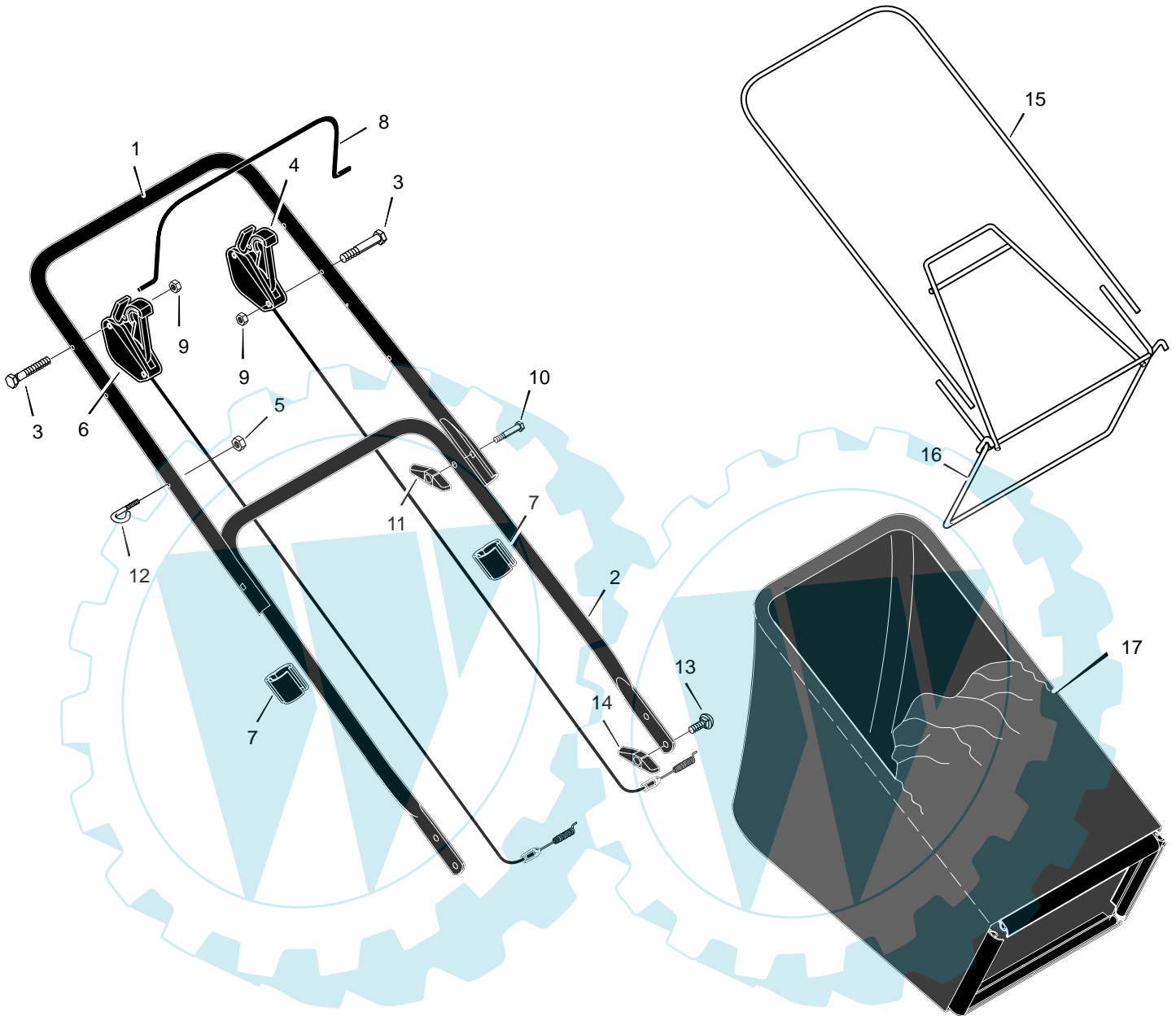
\* Parts are available from an Authorized Engine Service Center. See "Engines, Gasoline" or "Gasoline Engines" in the yellow pages of the telephone directory.

\*\* Included with Housing, Key No. 1.

\*\*\* These part are included with Key 58.

# 228610x68C

## HANDLE & BAG ASSEMBLY



Key No.	Description	Part No.
1	Handle, Upper	1101613E701
2	Handle, Lower	672906E701
3	Bolt	26x307
4	Control, Drive	1101676
5	Locknut	15x116
6	Control, Starter	1101611
7	Fastener, Cable	1101353
8	Lever, Stop	1101612E701
9	Nut	15x142

Key No.	Description	Part No.
10	Bolt	002x77
11	Knob	071294
12	Guide, Rope	071530
13	Bolt, Carriage	002x81
14	Knob, Plastic	071495
15	Tube, Bag	1101075
16	Frame Assembly	1101074
17	Bag, Cloth	1101614