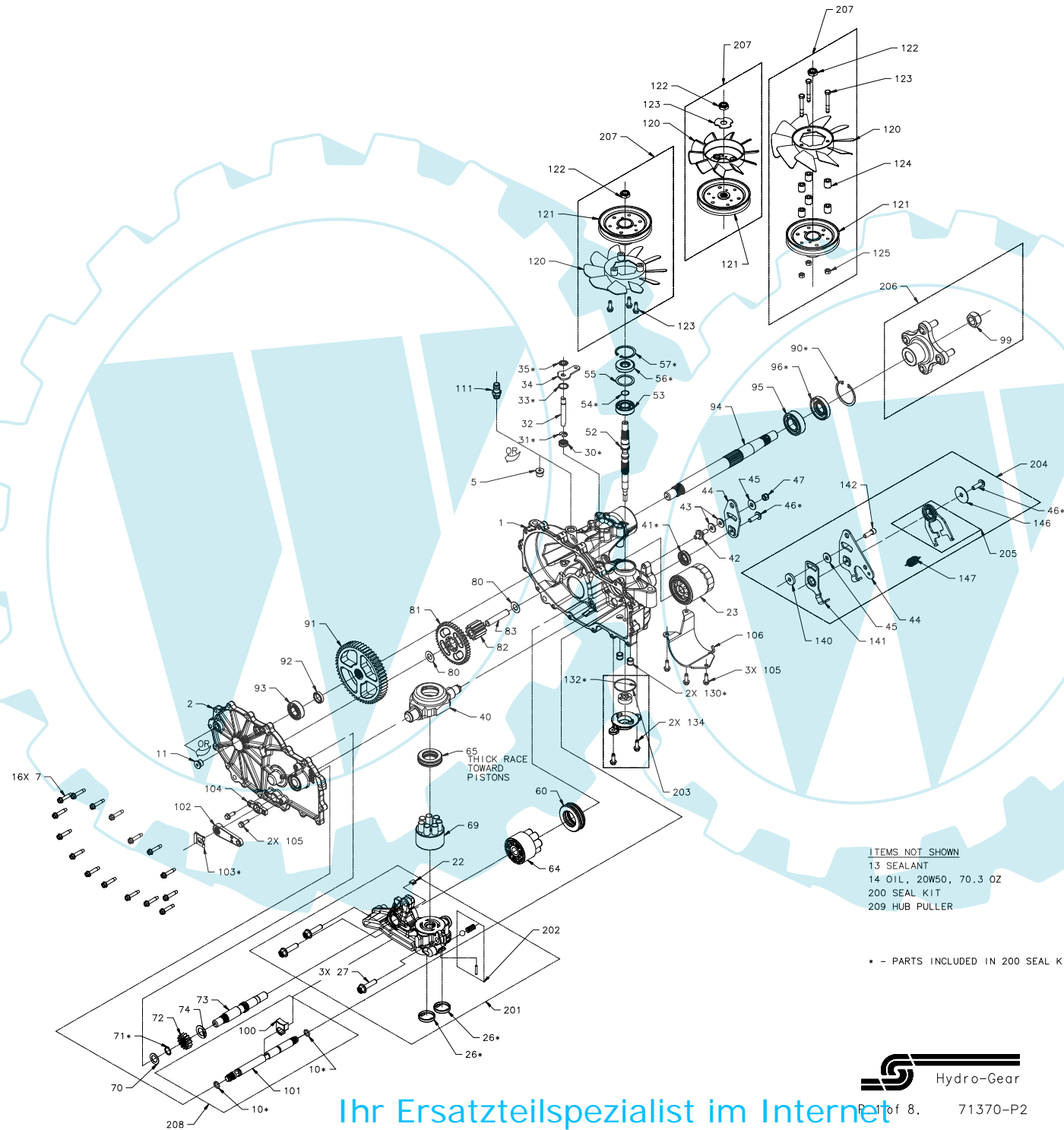


ZT 2800 SERVICE SCHEMATIC



ITEMS NOT SHOWN
13 SEALANT
14 OIL, 20W50, 70.3 OZ
200 SEAL KIT
209 HUB PULLER

* - PARTS INCLUDED IN 200 SEAL KIT



ZT 2800 SERVICE SCHEMATIC

MODEL NUMBER:

Z	
---	--

 -

*			
---	--	--	--

 -

		*	*
--	--	---	---

 -

--	--	--	--

 CHARACTER #:

1	2
---	---

 -

3	4	5	6
---	---	---	---

 -

7	8	9	10
---	---	---	----

 -

11	12	13	14
----	----	----	----

CONTROL TYPE

Char 9	Char 10	ITEM	COMPONENT	DESCRIPTION	QTY
0, 5	A	42	50426	STUD, SHORT 5/16-24	1
		43	52298	PUCK, FRICTION	1
		45	44130	WASHER .34X.88X.06	1
	B, C	46	51812	TWHCS 5/16-24 X 1.00 (PATCH)	1
		47	50317	NUT, HEX LOCK 5/16-24 UNF	1
		42	50426	STUD, SHORT 5/16-24	1
2, 3, 4, 7, 8, 9, A, B, C, D, E, F, G, H, J, K, L, M	B, C	45	44130	WASHER .34X.88X.06	1
		46	51812	TWHCS 5/16-24 X 1.00 (PATCH)	1
		47	50317	NUT, HEX LOCK 5/16-24 UNF	1
	B, C	48	51846	SPACER	1
		45	44130	WASHER .34X.88X.06	1
		46	51812	TWHCS 5/16-24 X 1.00 (PATCH)	1
140	51949	SPACER .320 X 1.005 X .179	1		
142	51616	SHCS 5/16-24X1 PATCH	1		
143	51947	BUSHING, PILOT, 1.13	1		
144	51948	WASHER, PLASTIC	2		
146	51950	WASHER, .343 X 1.500 X .062	1		

Char 9	Char 10	ITEM	COMPONENT	DESCRIPTION	QTY
2, 3, 4, 7, 8, 9	B	141	51945	ARM, NEUTRAL RIGHT	1
	C	141	51946	ARM, NEUTRAL LEFT	1

Char 9	Char 10	ITEM	COMPONENT	DESCRIPTION	QTY
2, 7, A, D, G, K	B, C	145	51951	ARM, SCISSOR	2
	B, C	145	51951	ARM, SCISSOR	1
3, 4, 8, 9, F, H, J, L, M	B, C	150	52232	ARM, SCISSOR UNIDIRECTIONAL	1

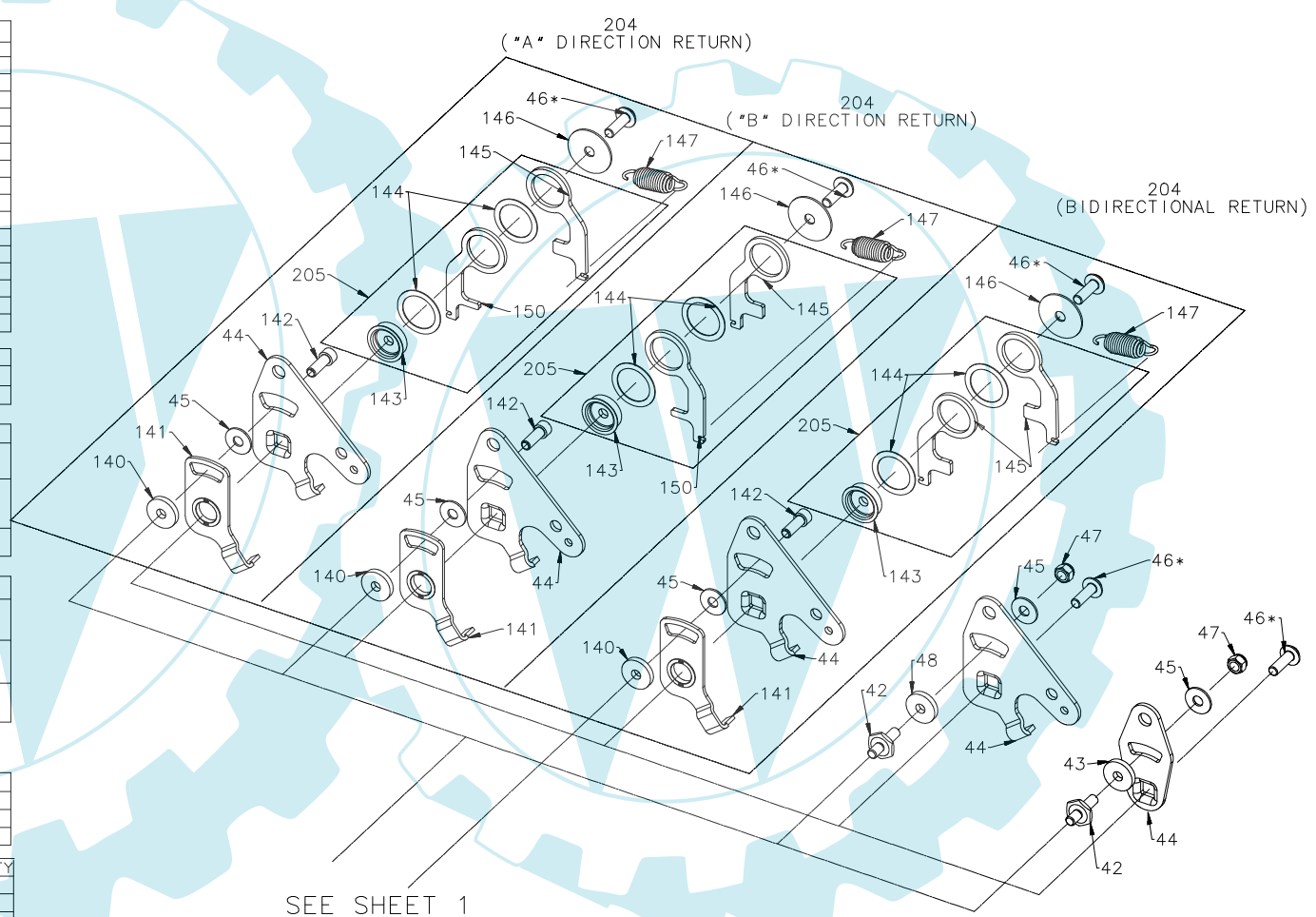
Char 9	Char 10	ITEM	COMPONENT	DESCRIPTION	QTY
2, 3, 4, 7, 8, 9	B, C	147	52401	SPRING, EXTNSN .57 X 2"	1
	B, C	147	51833	SPRING, EXTNSN RTN-34LBS	1
G, H, J, K, L, M	B, C	147	51605	SPRING, EXTNSN RTN-44LBS	1

CONTROL ARM

Char 10	ITEM	COMPONENT	DESCRIPTION	QTY
A	44	51631	ARM, CONTROL	1
B		51841	ARM, CONTROL RH	1
C		51842	ARM, CONTROL LH	1

Char 3	Char 9	ITEM	COMPONENT	DESCRIPTION	QTY
G, H, J	204	2	71095	KIT, RTN LH	1
		3, 4	71320	KIT, RTN UNIDIRECTIONAL LH	1
		7	71094	KIT, RTN RH	1
K, L, M	204	8, 9	71317	KIT, RTN UNIDIRECTIONAL RH	1
		2	71094	KIT, RTN RH	1
		3, 4	71317	KIT, RTN UNIDIRECTIONAL RH	1
		7	71095	KIT, RTN LH	1
8, 9	71320	KIT, RTN UNIDIRECTIONAL LH	1		

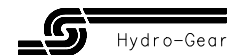
Char 3	Char 9	ITEM	COMPONENT	DESCRIPTION	QTY
G, H, J, K, L, M	2, 7, A, D, G, K	205	71454	KIT, SCISSOR ARM	1
			71453	KIT, SCISSOR ARM	1
G, H, J	3, 9, B, F, H, M	205	71452	KIT, SCISSOR ARM	1
			71453	KIT, SCISSOR ARM	1
K, L, M	4, 8, C, E, J, L	205	71453	KIT, SCISSOR ARM	1
			71452	KIT, SCISSOR ARM	1



SEE SHEET 1

* - PARTS INCLUDED IN 200 SEAL KIT

ITEM	COMPONENT	DESCRIPTION	QTY
200	71410	KIT, SEAL	1



ZT 2800 SERVICE SCHEMATIC

MODEL NUMBER: Z * - * * * - - - - -
 CHARACTER #: 1 2 - 3 4 5 6 - 7 8 9 10 - 11 12 13 14

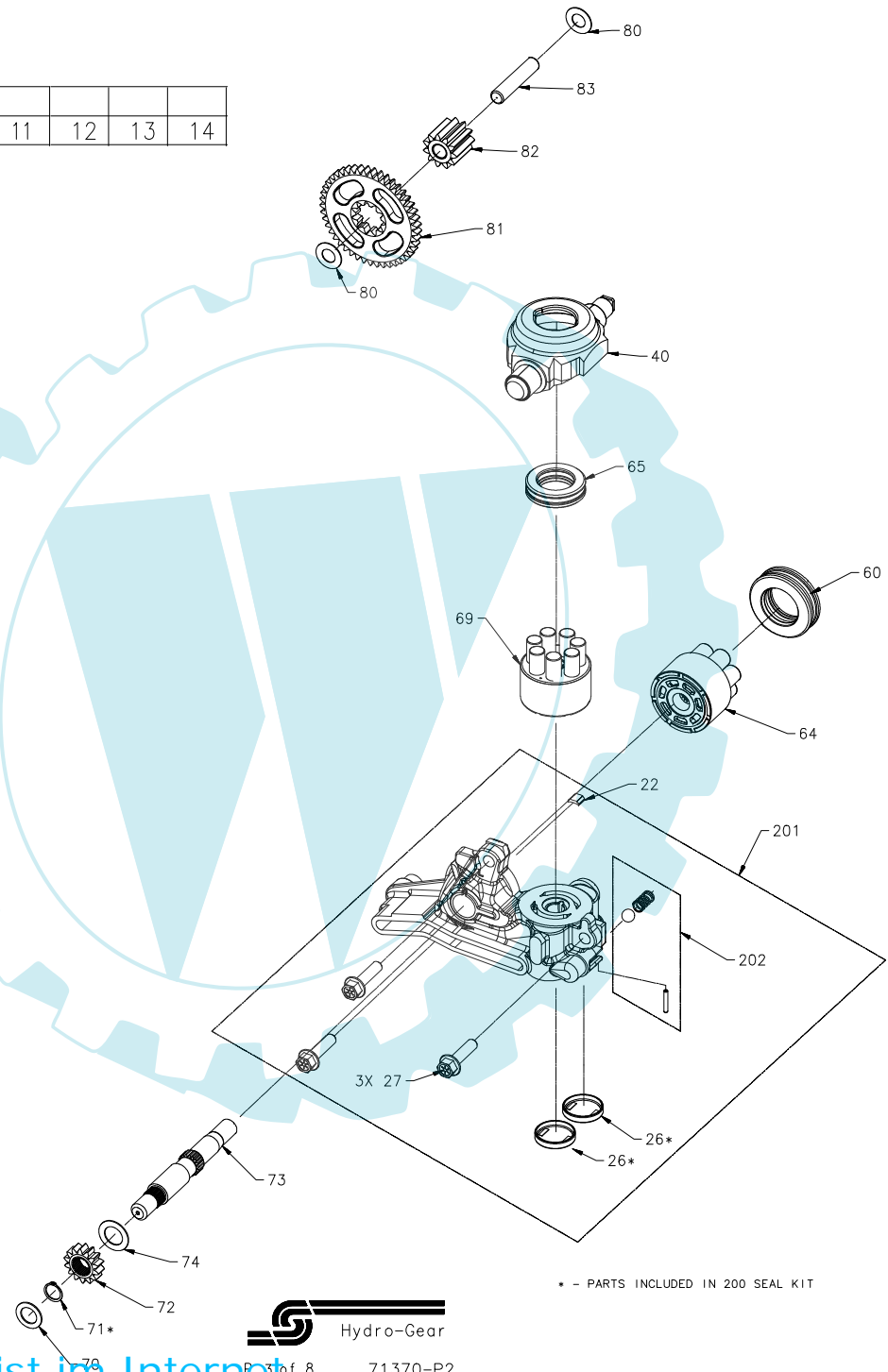
REDUCTION RATIO

Char 2	ITEM	COMPONENT	DESCRIPTION	QTY
H	72	52149	GEAR, 16T	1
	81	52148	GEAR, 43T	1
	82	52107	GEAR, 11T	1
J	72	52344	GEAR, 16T, STEEL	1
	81	52148	GEAR, 43T	1
	82	52340	GEAR, 11T, STEEL	1
K	72	52109	GEAR, 14T	1
	81	52110	GEAR, 45T	1
	82	52107	GEAR, 11T	1
L	72	52341	GEAR, 14T, STEEL	1
	81	52110	GEAR, 45T	1
	82	52340	GEAR, 11T, STEEL	1
M	72	52342	GEAR, 13T, STEEL	1
	81	52343	GEAR, 46T	1
	82	52340	GEAR, 11T, STEEL	1

COMMON PARTS

ITEM	COMPONENT	DESCRIPTION	QTY
22	51448	PLATE, BYPASS	1
26	52162	SEAL, PLUG 1.250 X .250	2
27	52137	HFHCS 3/8-16X1.5 (PATCH)	3
40	51048	TRUNNION, SWASHPLATE	1
60	51462	BEARING, THRUST	1
65	50551	BRG, THRUST BALL 30X52X13	1
70	44371	WASHER .63X1.0X.05	1
71	44145	RING, RETAINING .625	1
73	52150	SHAFT, MOTOR	1
74	51069	WASHER .72X1.16X.04	1
80	50132	WASHER .5X1.0X.03	2
83	51083	JACK SHAFT (PIN)	1
200	71410	KIT, SEAL	1

Char 3	Char 5	Char 6	ITEM	COMPONENT	DESCRIPTION	QTY
G, H, J L, M, K	A THRU R	A THRU R	69	70723	ASS'Y, BLOCK 7 PISTON	1
G, H J K, L M	A THRU R	A THRU R	64	70735	ASS'Y, CYLINDER BLOCK, 16cc	1
				71438	KIT, CENTER SECTION, RH, CHRGR	1
				71439	KIT, CENTER SECTION, RH, CHRGR	1
				71440	KIT, CENTER SECTION, LH, CHRGR	1
				71441	KIT, CENTER SECTION, LH, CHRGR	1
G, H K, L	E	E	201	71479	KIT, CENTER SECTION, RH, CHRGR	1
				71480	KIT, CENTER SECTION, LH, CHRGR	1
				71411	KIT, CHARGE	1
G, H, K, L	A THRU R	A THRU R	202	71447	KIT, CENTER SECTION, RH	1
J	B	B	201	71448	KIT, CENTER SECTION, LH	1
M						



ZT 2800 SERVICE SCHEMATIC

MODEL NUMBER:

Z	
---	--

 -

	*	
--	---	--

 -

--	--	--	--

 -

--	--	--	--	--	--

 CHARACTER #:

1	2
---	---

 -

3	4	5	6
---	---	---	---

 -

7	8	9	10
---	---	---	----

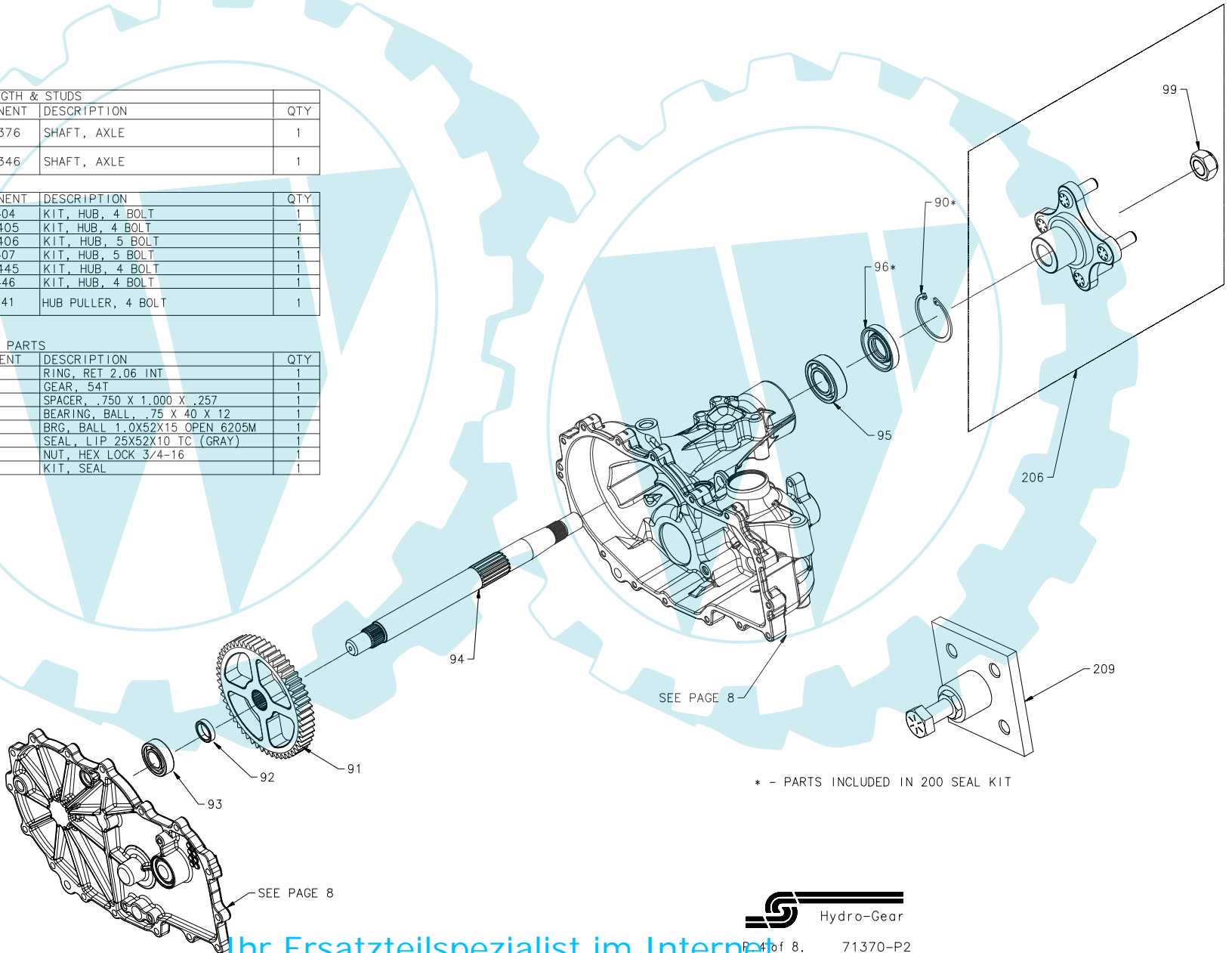
 -

11	12	13	14
----	----	----	----

AXLE END, LENGTH & STUDS				
Char 4	ITEM	COMPONENT	DESCRIPTION	QTY
A THRU E L, M	94	52376	SHAFT, AXLE	1
F THRU K N, P		52346	SHAFT, AXLE	1

Char4	ITEM	COMPONENT	DESCRIPTION	QTY
B, G		71404	KIT, HUB, 4 BOLT	1
C, H		71405	KIT, HUB, 4 BOLT	1
D, J	206	71406	KIT, HUB, 5 BOLT	1
E, K		71407	KIT, HUB, 5 BOLT	1
L, N		71445	KIT, HUB, 4 BOLT	1
M, P		71446	KIT, HUB, 4 BOLT	1
B, C, G, H	209	71241	HUB PULLER, 4 BOLT	1

COMMON PARTS				
ITEM	COMPONENT	DESCRIPTION	QTY	
90	50859	RING, RET 2.06 INT	1	
91	52108	GEAR, 54T	1	
92	52161	SPACER, .750 X 1.000 X .257	1	
93	44121	BEARING, BALL, .75 X 40 X 12	1	
95	50771	BRG, BALL 1.0X52X15 OPEN 6205M	1	
96	50772	SEAL, LIP 25X52X10 TC (GRAY)	1	
99	50863	NUT, HEX LOCK 3/4-16	1	
200	71410	KIT, SEAL	1	



* - PARTS INCLUDED IN 200 SEAL KIT

ZT 2800 SERVICE SCHEMATIC

MODEL NUMBER: Z - * - * - *
 CHARACTER #: 1 2 - 3 4 5 6 - 7 8 9 10 - 11 12 13 14

BYPASS ARM

Char 11	ITEM	COMPONENT	DESCRIPTION	QTY
1		51629	ARM, BYPASS	1
2	34	51910	ARM, BYPASS	1
3		52370	ARM, BYPASS	1

BRAKE ARM

Char 7	ITEM	COMPONENT	DESCRIPTION	QTY
1		51776	HANDLE, BRAKE	1
2	102	52172	ARM, BRAKE	1

BRAKE CAM

Char 8	ITEM	COMPONENT	DESCRIPTION	QTY
A, B, C,	101	52244	CAM, BRAKE	1
E, F, G	103	52027	CLIP, RETAINING	1
J, K, L,	101	52245	CAM, BRAKE	1
N, P, R	103	52027	CLIP, RETAINING	1

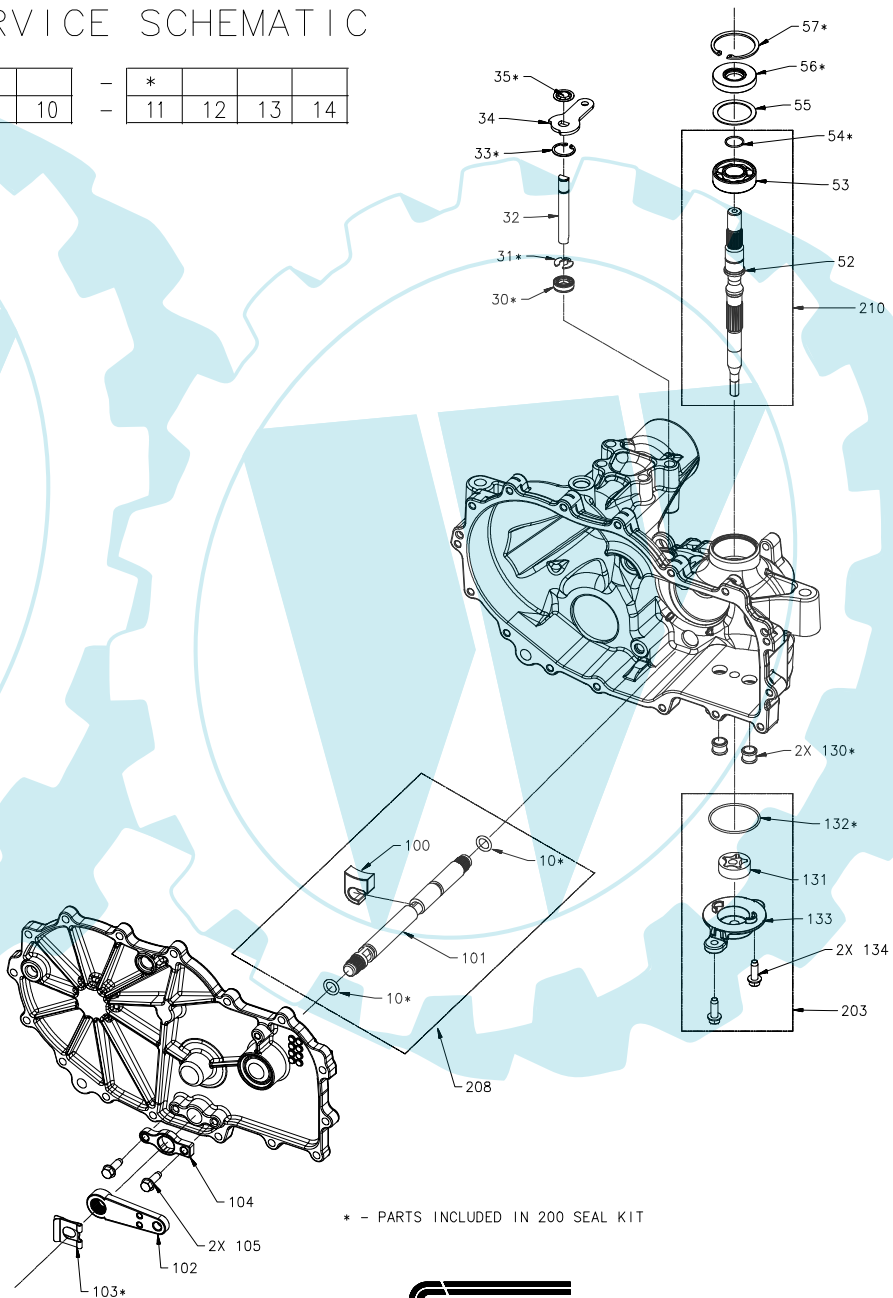
Char 3	ITEM	COMPONENT	DESCRIPTION	QTY
G, H, K, L	28	2003071	BRG, JRNL	1
	52	52155	SHAFT, INPUT	1
	130	52157	TUBE, CONNECTING	2
	131	50273	GEROTOR ASSEMBLY (1.9 cc/rev)	1
	132	52250	O-RING, -137, 0.103 X 2.050	1
	133	52249	COVER, CHARGE PUMP	1
J, M	134	50752	HFCS 1/4-20X.75	2
	52	51062	SHAFT, INPUT	1

COMMON PARTS

ITEM	COMPONENT	DESCRIPTION	QTY
10	51804	O-RING - 111 .103 X .424	2
30	51626	SEAL, LIP .375X.75X.25	1
31	51628	RING, RET .375 EXTRNL	1
32	52136	ROD, BYPASS	1
33	51627	RING, RET .750 INTRNL	1
35	51630	RING, RTNG .375 EXT	1
53	50315	BRG, BALL 17X40X12 OPEN 6203	1
54	2000022	RING, RET WIRE .561 ID	1
55	50951	WASHER 1.23X1.56X.04	1
56	51161	SEAL, LIP 17X40X7	1
100	52118	PUCK, BRAKE	1
104	52115	RETAINER, CAM STOP	1
105	50752	HFCS 1/4-20X.75	2
200	71410	KIT, SEAL	1

Char 3	ITEM	COMPONENT	DESCRIPTION	QTY
G,H,K,L	203	71411	KIT, CHARGE	1
	210	71442	KIT, INPUT SHAFT	1
	J, M	210	71443	KIT, INPUT SHAFT

Char 8	ITEM	COMPONENT	DESCRIPTION	QTY	
A, B, C, E, F, G	208	71408	KIT, BRAKE CAM	1	
	J, K, L, N, P, R	208	71409	KIT, BRAKE CAM	1



* - PARTS INCLUDED IN 200 SEAL KIT

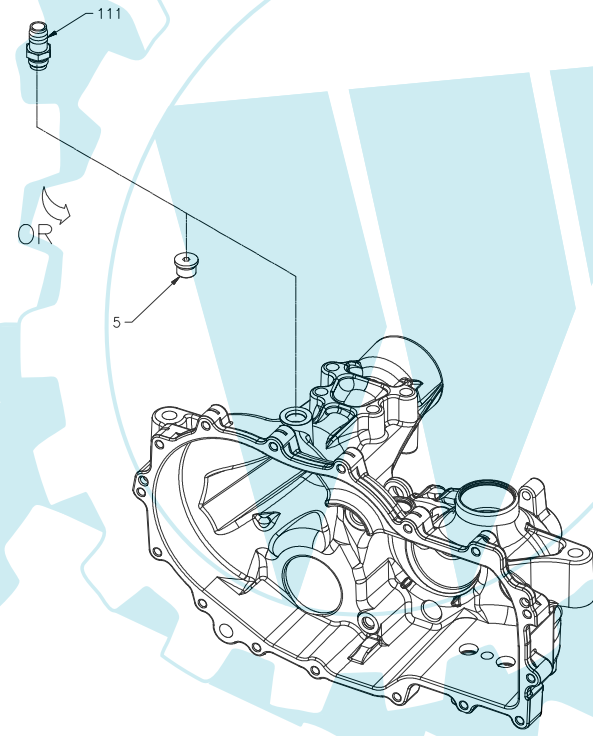


ZT 2800 SERVICE SCHEMATIC

MODEL NUMBER: Z - - * - - - *
 CHARACTER #: 1 2 - 3 4 5 6 - 7 8 9 10 - 11 12 13 14

BREATHER FITTINGS

Char 5	Char 13	ITEM	COMPONENT	DESCRIPTION	QTY
A THRU G	K	111	70110	FITTING, STR 9/16-18 SAE .5 BARB	1
		112	51926	CAP, TAB .490 I.D.	1
	L	111	71393	FITTING, STR 9/16-18 SAE .5 BARB	1
K THRU T	X	5	9005110-5600	PLUG 9/16-18 (METAL)	1

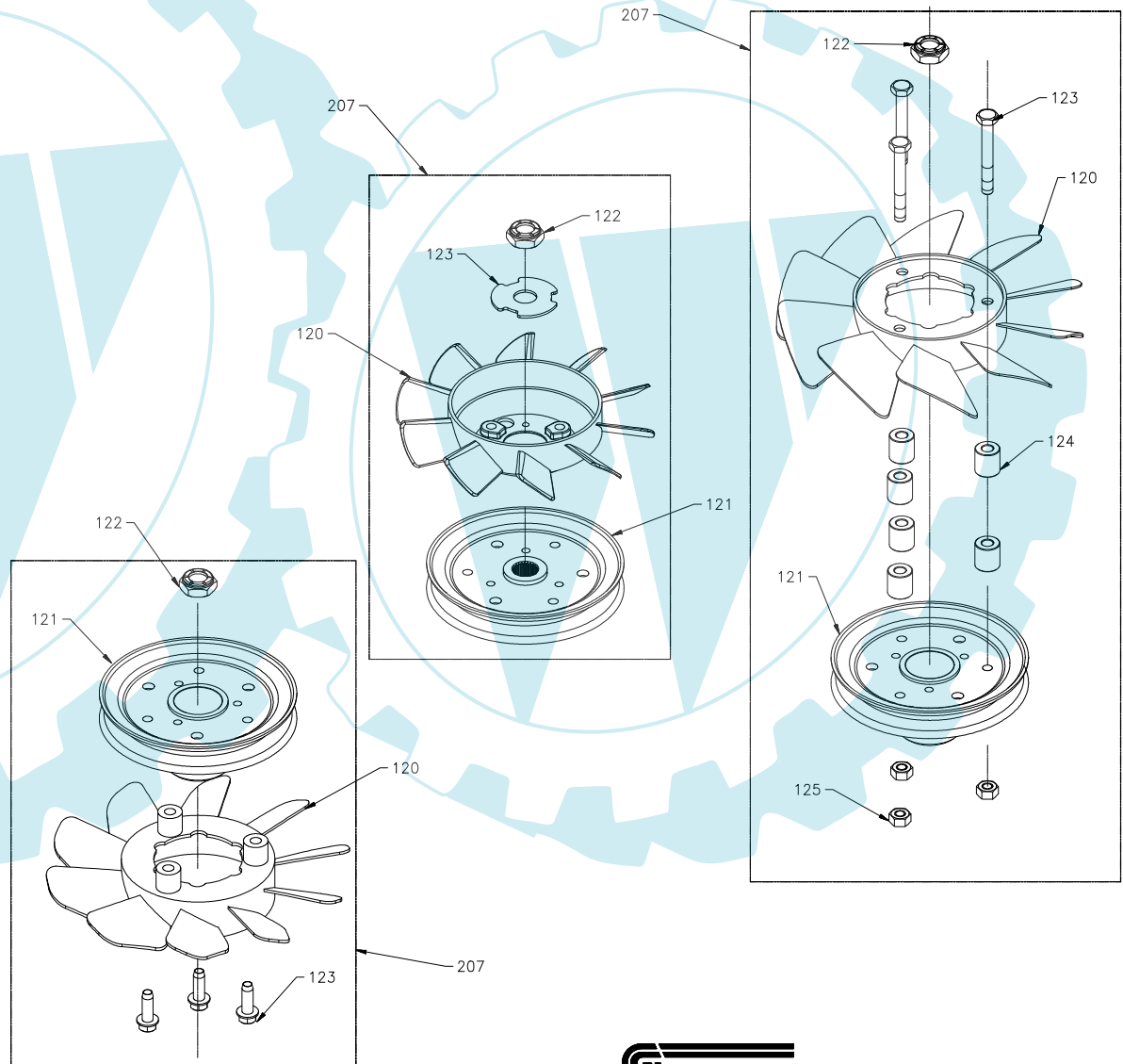


ZT 2800 SERVICE SCHEMATIC

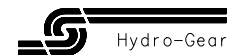
FAN & PULLEY KIT

Char12	ITEM	COMPONENT	DESCRIPTION	QTY
X			N/A	
A	120	51230	FAN 7.0 (10 BLADE)	1
	121	51231	PULLEY 3.86	1
	122	51244	NUT, HEX LCKNG 1/2-20 NYLON	1
	123	51523	WASHER, OD SLOTTED .53X1.63X.0	1
B	120	51230	FAN 7.0 (10 BLADE)	1
	121	51416	PULLEY	1
	122	51244	NUT, HEX LCKNG 1/2-20 NYLON	1
	123	51523	WASHER, OD SLOTTED .53X1.63X.0	1
E	120	51862	FAN, 7.0 (10 BLADE)	1
	121	51875	PULLEY 4.5 INCH	1
	122	44133	NUT, HEX 1/2-20 PATCH	1
	123	51523	WASHER, OD SLOTTED .53X1.63X.0	1
F	120	50307	FAN 7.0 (10 BLADE)	1
	121	50302	PULLEY 4.5 X 1.625	1
	122	51244	NUT, HEX LCKNG 1/2-20 NYLON	1
	123	44300	HHCS 1/4-20X2 (PATCH)	3
	124	50259	SPACER .26X.57X.62 (BLACK)	6
H	120	50927	FAN 7.0 (10 BLADE)	1
	121	51182	PULLEY 4.5	1
	122	51244	NUT, HEX LCKNG 1/2-20 NYLON	1
	123	44300	HHCS 1/4-20X2 (PATCH)	3
	124	50259	SPACER .26X.57X.62 (BLACK)	6
J	120	51862	FAN, 7.0 (10 BLADE)	1
	121	51925	PULLEY, 3.25 INCH	1
	122	44133	NUT, HEX 1/2-20 PATCH	1
K	120	51862	FAN, 7.0 (10 BLADE)	1
	121	51231	PULLEY 3.86	1
	122	51244	NUT, HEX LCKNG 1/2-20 NYLON	1
	123	51523	WASHER, OD SLOTTED .53X1.63X.0	1
L	120	52315	FAN, 7.0 (10 BLADE)	1
	121	50302	PULLEY 4.5 INCH	1
	122	51244	NUT, HEX LCKNG 1/2-20 NYLON	1
	123	50752	HFHCS 1/4-20X.75	3
M	120	52315	FAN, 7.0 (10 BLADE)	1
	121	51173	PULLEY 5.5 INCH	1
	122	51244	NUT, HEX LCKNG 1/2-20 NYLON	1
	123	50752	HFHCS 1/4-20X.75	3
N	120	52315	FAN, 7.0 (10 BLADE)	1
	121	52046	PULLEY 5.0 INCH	1
	122	51244	NUT, HEX LCKNG 1/2-20 NYLON	1
P	120	52315	FAN, 7.0 (10 BLADE)	1
	121	51597	PULLEY 4.75 INCH	1
	122	51244	NUT, HEX LCKNG 1/2-20 NYLON	1
	123	50752	HFHCS 1/4-20X.75	3
T	120	50307	FAN 7.0 (10 BLADE)	1
	121	51182	PULLEY 4.5	1
	122	51244	NUT, HEX LCKNG 1/2-20 NYLON	1
	123	44300	HHCS 1/4-20X2 (PATCH)	3
	124	50259	SPACER .26X.57X.62 (BLACK)	6
125	43178	NUT, HEX 1/4-20	3	

MODEL NUMBER: Z - - - - - *
 CHARACTER #: 1 2 - 3 4 5 6 - 7 8 9 10 - 11 12 13 14



Char12	ITEM	COMPONENT	DESCRIPTION	QTY
A		70460	KIT, FAN & PULLEY	1
B		70630	KIT, FAN & PULLEY	1
E		70489	KIT, FAN & PULLEY	1
F		70488	KIT, FAN & PULLEY	1
H		70711	KIT, FAN & PULLEY	1
J		70995	KIT, FAN & PULLEY	1
K		70510	KIT, FAN & PULLEY	1
L	207	71333	KIT, FAN & PULLEY	1
M		71334	KIT, FAN & PULLEY	1
N		71335	KIT, FAN & PULLEY	1
P		71336	KIT, FAN & PULLEY	1
T		71382	KIT, FAN & PULLEY	1



ZT 2800 SERVICE SCHEMATIC

MODEL NUMBER:

Z	
---	--

 -

*		*	
---	--	---	--

 -

		*	
--	--	---	--

 -

--	--	--	--

 CHARACTER #:

1	2
---	---

 -

3	4	5	6
---	---	---	---

 -

7	8	9	10
---	---	---	----

 -

11	12	13	14
----	----	----	----

MAIN HOUSING KITS

Char 5	Char3	Char9	ITEM	COMPONENT	DESCRIPTION	QTY		
A THRU G	G,H	0 THRU 4,A THRU C, G THRU J	1	71412	KIT, HOUSING, MAIN, RH, CHRG	1		
		5 THRU 9,D THRU F, K THRU M		71413	KIT, HOUSING, MAIN, RH, CHRG, CNTL	1		
	J	0 THRU 4,A THRU C, G THRU J		71414	KIT, HOUSING, MAIN, RH	1		
		5 THRU 9,D THRU F, K THRU M		71415	KIT, HOUSING, MAIN, RH, CNTL	1		
	K,L	0 THRU 4,A THRU C, G THRU J		71420	KIT, HOUSING, MAIN, LH, CHRG	1		
		5 THRU 9,D THRU F, K THRU M		71421	KIT, HOUSING, MAIN, LH, CHRG, CNTL	1		
	M	0 THRU 4,A THRU C, G THRU J		71424	KIT, HOUSING, MAIN, LH	1		
		5 THRU 9,D THRU F, K THRU M		71425	KIT, HOUSING, MAIN, LH, CNTL	1		
	K THRU T	G,H		0 THRU 4,A THRU C, G THRU J	1	71418	KIT, HOUSING, MAIN, RH, CHRG	1
				5 THRU 9,D THRU F, K THRU M		71419	KIT, HOUSING, MAIN, RH, CHRG, CNTL	1
J		0 THRU 4,A THRU C, G THRU J	71416	KIT, HOUSING, MAIN, RH		1		
		5 THRU 9,D THRU F, K THRU M	71417	KIT, HOUSING, MAIN, RH, CNTL		1		
K,L		0 THRU 4,A THRU C, G THRU J	71422	KIT, HOUSING, MAIN, LH, CHRG		1		
		5 THRU 9,D THRU F, K THRU M	71423	KIT, HOUSING, MAIN, LH, CHRG, CNTL		1		
M		0 THRU 4,A THRU C, G THRU J	71426	KIT, HOUSING, MAIN, LH		1		
		5 THRU 9,D THRU F, K THRU M	71427	KIT, HOUSING, MAIN, LH, CNTL		1		

SIDE COVER KITS

Char 5	Char3	Char9	ITEM	COMPONENT	DESCRIPTION	QTY
A THRU G	G,H,J	0 THRU 4,A THRU C, G THRU J	2	71429	KIT, COVER, SIDE, RH, CNTL	1
		5 THRU 9,D THRU F, K THRU M		71431	KIT, COVER, SIDE, RH	1
	K,L,M	0 THRU 4,A THRU C, G THRU J		71428	KIT, COVER, SIDE, LH, CNTL	1
		5 THRU 9,D THRU F, K THRU M		71430	KIT, COVER, SIDE, LH	1
K THRU T	G,H,J	0 THRU 4,A THRU C, G THRU J	2	71433	KIT, COVER, SIDE, RH, CNTL	1
		5 THRU 9,D THRU F, K THRU M		71435	KIT, COVER, SIDE, RH	1
	K,L,M	0 THRU 4,A THRU C, G THRU J		71432	KIT, COVER, SIDE, LH, CNTL	1
		5 THRU 9,D THRU F, K THRU M		71434	KIT, COVER, SIDE, LH	1

Char3	ITEM	COMPONENT	DESCRIPTION	QTY
G,H,J	106	52257	GUARD, FILTER, RH	1
K,L,M	106	52247	GUARD, FILTER, LH	1

COMMON PARTS

ITEM	COMPONENT	DESCRIPTION	QTY
7	51190	HFCS 1/4-20 X 1.25*	16
11	9005110-5600	PLUG 9/16-18 (METAL)	1
13	50928	SEALANT	10.1 OZ
14		OIL, 20W50	70.3 OZ
23	52114	FILTER, OIL	1
200	71410	KIT, SEAL	1

