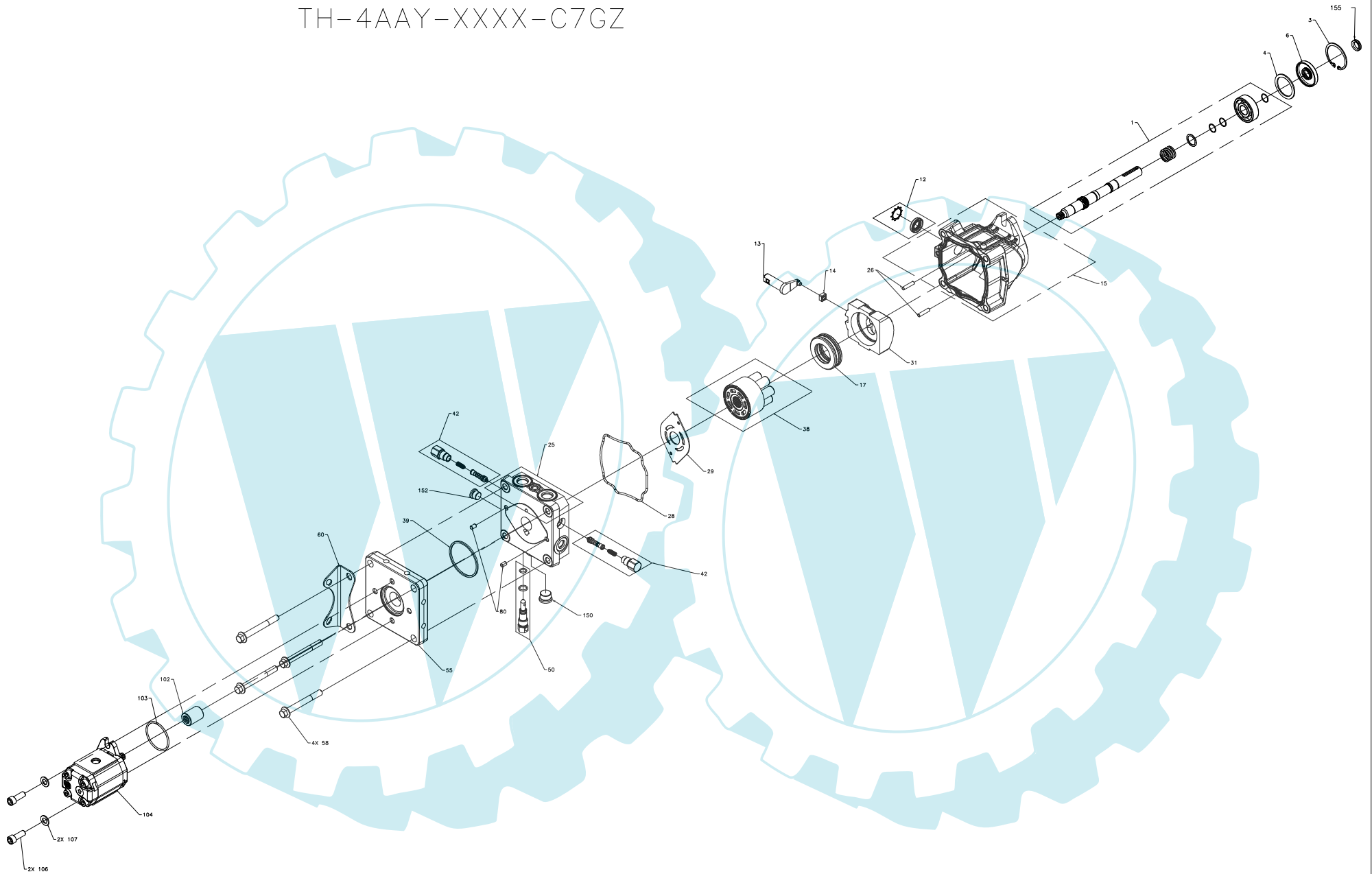


TH-4AAY-XXXX-C7GZ



TH-4AAY-XXXX-C7GZ

INPUT PUMP

MISC. COMPONENTS

ITEM	PART #	QTY	DESCRIPTION
1	70713	1	KIT, INPUT SHAFT (17MM KEYED, 9T 20/40 AA-PAD)
		1	INPUT SHAFT 17mm KEYED
		3	RETAINING RING - WIRE
		1	BEARING, BALL
		1	WASHER, THRUST
		1	SPRING, HELICAL COMPRESSION
3	2000038	1	RETAINING RING - 47mm
4	52043	1	SPACER
6	52032	1	SEAL, LIP 17 X 47 X 7
12	70739	1	KIT, TRUNNION SEAL
		1	RETAINING RING - TRUNNION SEAL
		1	SEAL, LIP 15 X 27 X 5
13	2000014	1	TRUNNION ARM (DOUBLE D)
14	2000015	1	SLOT GUIDE
15	70738	1	KIT, HOUSING
		1	HOUSING - MACHINED
		2	BEARING, CRADLE
		1	BEARING, JOURNAL
17	51462	1	BEARING, THRUST
25	70967	1	KIT, END CAP (TANDEM)
		1	END CAP (TANDEM)
		1	BEARING, NEEDLE (SHAFT)
		1	PLUG - 5/16-24 STEEL
26	50641	2	PIN, HEADLESS
28	51437	1	GASKET, HOUSING
29	52371	1	VALVE PLATE
31	51436	1	SWASHPLATE
38	70735	1	KIT, CYLINDER BLOCK - MOTOR
		1	CYLINDER BLOCK - MOTOR
		7	SPRING, PISTON
		7	PISTON
		7	PISTON SPRING SEAT
39	51016	1	O-RING
42	70741	2	KIT, SHOCK VALVE (200 BAR, BLANK ORIFICE)
		1	SHOCK VALVE
		1	PLUG, SHOCK VALVE
		1	SPRING, COMPRESSION (SHOCK-CHECK)
		2	O-RING
50	2513030	1	BYPASS VALVE KIT
		1	BYPASS VALVE (NO ORIFICE)
		1	O-RING
		1	RING, BACK-UP
55	51536	1	PLATE, ADAPTER (GEAR AA)
58	51826	4	HEX, SCREW FH M10 X 90MM
60	51593	1	TORQUE BRACKET
80	9004800-2506	2	PIN, HEADLESS
150	9005110-7500	1	PLUG - 3/4-16 STEEL
152	9005110-5600	1	PLUG - 9/16-18 STEEL
155	52042	1	SEAL, LIP EXTERNAL

ITEM	PART #	QTY	DESCRIPTION
100	71375	1	KIT, SEAL OVERHAUL
102	51497	1	COUPLING 9T 20/40
103	51508	1	O-RING, .103 X 1.987 ID
104	51501-53	1	6.0 CC CCW AA-PAD SKP1/6.0 S
106	51507	2	SHCS 3/8-16 X 1
107	51506	2	WASHER .734 X .406 X .063

