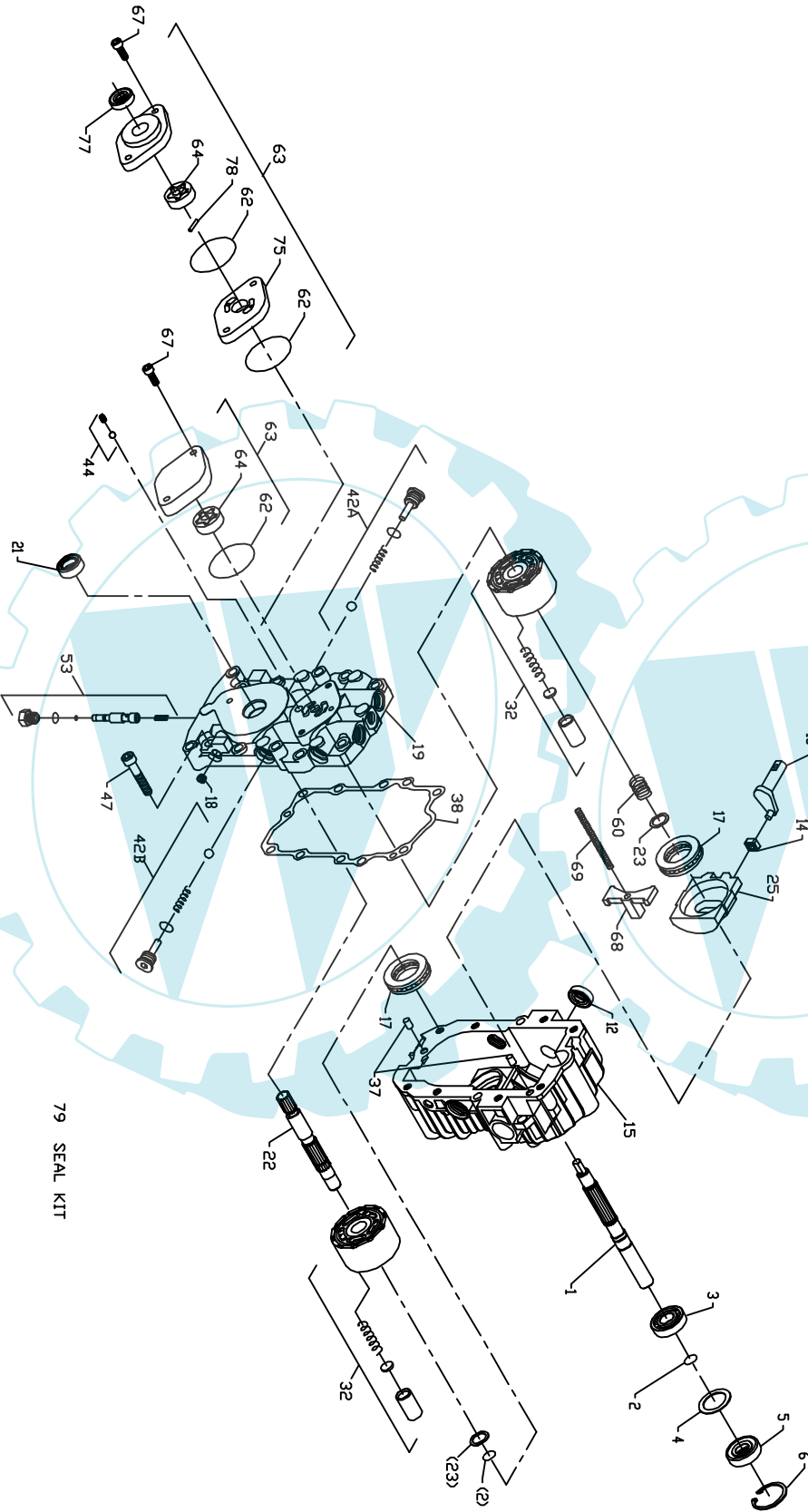


BDU-10L



79 SEAL KIT

(S) SERVICE RELEASE
ECN #52C
03/04/91

(S1)

H7: REV'D ITEM TO MATCH C/S
SHEET 2 (EXCEL)
REV'D COLUMN
*CHARGE PUMP
SHEET 2 (EXCEL)
ITEM #19)
ADDED *P/N/C SECTION KIT (9)
ECN #6116
03/02/99E

(S2)

UPDATED TO NEW DEL'D ITEM #812
ECN #7914
10/06/00 SHEET

(P3)

SHEET 1
ADD'D #18 PLUG TO CENTER SECT
SHEET 2
NO CHANGES
SHEET 3
ADD'D 18 90050
ECN #8937
09/04/01 D.THOM

(P4)

SHEET 2
XCXNB
TO CENTER SECTIC
SHEET 2
NO CHANGES
SHEET 3
ADD'D 18 90050
ECN #8937
09/04/01 D.THOM

BDU-10L

MODEL NUMBER	PUMP SHAFT (ITEM #1)	MOTOR SHAFT (ITEM #22)	HOUSING (KIT #5)	CENTER SECTION (KIT #19)	BYPASS VALVE (KIT #53)	CHECK VALVE (LH) (KIT #42B)	CHECK VALVE (RH) (KIT #42A)	CHARGE PUMP (KIT #63)	TRUN-MION ARM	INA	INPUT ROTATION	MODEL NUMBER
BDU-10L-110	2003020	2003032	2513020	2513006	2513011	2510008	2510008	2513027	LH	NO	CCW	BDU-10L-110
BDU-10L-111	2003020	2003032	2513020	2513006	2513011	2510008	2510008	2513027	LH	NO	CW	BDU-10L-111
BDU-10L-112	2003020	2003034	2513020	2513006	2513011	2510008	2510008	2513027	LH	NO	CCW	BDU-10L-112
BDU-10L-113	2003020	2003032	2513023	2513006	2513025	2510008	2510008	2513027	LH	YES	CCW	BDU-10L-113
BDU-10L-114	2003020	2003032	2513020	2513006	2513011	2510008	2510008	2513027	LH	NO	CCW	BDU-10L-114
BDU-10L-115	2003020	2003032	2513020	2513006	2513025	2510008	2510008	2513027	LH	NO	CW	BDU-10L-115
BDU-10L-117	2003020	2003032	2513020	2513006	2513011	2510027	2510027	2513027	LH	NO	CCW	BDU-10L-117
BDU-10L-118	50158	2003034	2513035	2513006	2513011	2510027	2510027	2513027	LH	NO	CCW	BDU-10L-118
BDU-10L-119	2003020	2003032	2513020	2513006	2513011	2510027	2510027	2513027	LH	NO	CW	BDU-10L-119
BDU-10L-120	2003020	2003032	2513023	2513006	2513011	2510008	2510027	2513027	LH	YES	CCW	BDU-10L-120
BDU-10L-121	2003020	2003032	2513020	2513006	2513011	2510034	2510050	2513027	LH	NO	CCW	BDU-10L-121
BDU-10L-122	50158	2003034	2513035	2513040	2513011	2510050	2510027	2513027	LH	NO	CCW	BDU-10L-122
BDU-10L-123	2003020	2003032	2513020	2513006	2513011	2510027	2510034	2513027	LH	NO	CW	BDU-10L-123
BDU-10L-124	2003020	2003032	2513020	2513006	2513011	2510008	2510027	2513027	LH	NO	CW	BDU-10L-124
BDU-10L-210	2003020	2003032	2513003	2513006	2513011	2510008	2510008	2513027	RH	NO	CCW	BDU-10L-210
BDU-10L-211	2003020	2003032	2513003	2513006	2513011	2510008	2510008	2513027	RH	NO	CW	BDU-10L-211
BDU-10L-212	2003020	2003032	2513003	2513006	2513025	2510008	2510008	2513027	RH	NO	CW	BDU-10L-212
BDU-10L-213	2003020	2003032	2513022	2513006	2513011	2510008	2510008	2513027	RH	YES	CW	BDU-10L-213
BDU-10L-214	2003020	2003032	2513003	2513006	2513025	2510008	2510008	2513027	RH	NO	CCW	BDU-10L-214
BDU-10L-216	2003020	2003032	2513003	2513006	2513011	2510027	2510027	2513027	RH	NO	CCW	BDU-10L-216
BDU-10L-217	2003020	2003032	2513021	2513006	2513011	2510008	2510062	2513027	RH	YES	CW	BDU-10L-217
BDU-10L-218	2003020	2003032	2513003	2513006	2513011	2510027	2510027	2513027	RH	NO	CW	BDU-10L-218
BDU-10L-220	2003020	2003032	2513022	2513006	2513011	2510008	2510008	2513027	RH	YES	CW	BDU-10L-220
BDU-10L-221	50185	2003034	2513036	2513037	NONE	2510034	2510050	2513027	RH	YES	CCW	BDU-10L-221
BDU-10L-222	2003020	2003032	2513003	2513006	2513011	2510027	2510008	2513027	RH	NO	CCW	BDU-10L-222
BDU-10L-223	2003020	2003032	2513003	2513006	2513011	2510050	2510034	2513027	RH	NO	CW	BDU-10L-223
BDU-10L-224	2003020	2003032	2513003	2513006	2513011	2510034	2510027	2513027	RH	NO	CW	BDU-10L-224
BDU-10L-225	50158	2003034	2513036	70444	2513011	2510034	2510050	2513027	RH	YES	CCW	BDU-10L-225
BDU-10L-226	2003020	2003032	2513003	2513006	2513011	2510027	2510008	2513027	RH	NO	CW	BDU-10L-226
BDU-10L-228	50158	2003034	2513036	2513037	NONE	2510034	2510050	2513027	RH	YES	CCW	BDU-10L-228
BDU-10L-229	2003020	2003032	2513003	2513006	2513011	2510008	2510027	2513027	RH	NO	CW	BDU-10L-229
BDU-10L-230	2003020	2003032	2513003	2513006	2513011	2510050	2510050	2513027	RH	NO	CCW	BDU-10L-230
BDU-10L-256	50087	2003034	2513003	2513026	2513011	2510027	2510008	2513028	RH	NO	CW	BDU-10L-256
BDU-10L-257	50087	2003034	2513003	2513026	2513011	2510027	2510027	2513028	RH	NO	CW	BDU-10L-257
BDU-10L-258	50087	2003034	2513003	2513039	2513011	2510027	2510008	2513028	RH	NO	CW	BDU-10L-258
BDU-10L-259	50087	2003034	2513003	2513039	2513011	2510027	2510027	2513028	RH	NO	CW	BDU-10L-259

△ - NO MOTOR SHAFT SEAL REQ'D.

△ - HOUSING TO HAVE 51556 GRADLE BEARING

BDU-10L

ITEM #	HYDRO-GEAR PART #	DESCRIPTION	ITEM #	HYDRO-GEAR PART #	DESCRIPTION
1	2003020	SHAFT - PUMP (BLD KEY, CHG)-A	32	70331	CYLINDER BLOCK KIT
	50087	SHAFT - PUMP (16T SPL, 15T P)-D	37	9004800-2506	PIN - STRAIGHT HEADLESS
	50158	SHAFT - PUMP (16T SPL, CHG)-F	38	2003060	HOUSING GASKET
	50185	SHAFT - PUMP (TAPR KEY, CHG)-E	42	2510008	CHECK VALVE KIT (3/8" BALL)
2	2003016	WIRE RETAINING RING		2510062	CHECK VALVE KIT (0.024" ORIFICE)
3	2003043	BALL BEARING		2510027	CHECK VALVE KIT (0.031" ORIFICE)
4	2003018	SPACER		2510034	CHECK VALVE KIT (0.044" ORIFICE)
5	9008000-0128	SEAL - LIP 15 x 35 x 7		2510050	CHECK VALVE KIT (BLANK)
6	2003052	RETAINING RING	44	2510064	CHARGE RELIEF VALVE KIT (1/4" STEEL BALL)
12	9008000-0126	SEAL - LIP 12 x 25 x 7	47	9007314-0810	SOCKET HEAD SCREW
13	2003005	TRUNNION ARM	53	2513011	BYPASS VALVE KIT (STD)
14	2000015	SLOT GUIDE		2513025	BYPASS VALVE KIT (W/ANNULUS)
15	2513003	HOUSING KIT (T-RH; D-R,T)	60	2003014	SPRING, BLOCK
	2513020	HOUSING KIT (T-LH; D-L,T)	62	9004101-1340	O-RING
	2513021	HOUSING KIT (T-RH; D-L,T; INA)	63	2513027	CHARGE PUMP KIT (STD)
	2513022	HOUSING KIT (T-RH; D-R,T; INA)		2513028	CHARGE PUMP KIT (STD)
	2513023	HOUSING KIT (T-LH; D-L,T; INA)	64	50273	GEROTOR ASSEMBLY (0.11 cu.in./rev)(D-DRIVE)
	2513035	HOUSING KIT (T-LH; D-R,T)		50326	GEROTOR ASSY. (0.15 cu.in./rev)(PIN DRIVE)
	2513036	HOUSING KIT (T-RH; D-T; INA)	67	50095	SOCKET HEAD CAP SCREW
17	50551	BALL BEARING - THRUST	68	2003091	LEVELER
18	9005001-0600	PLUG, PIPE	69	2003092	SPRING - HELICAL COMPRESSION
19	2513006	CENTER SECTION (7/16 INLET)	75	50262	PLATE - SPACER
	2513026	CENTER SECTION (9/16 INLET, 256 CHG)	77	50442	SEAL - LIP .5 x .88 x .25
	2513037	CENTER SECTION (9/16 INLET)	78	50091	PIN - HEADLESS
	2513039	CENTER SECTION (9/16 INLET, 256 CHG)	79	2513013	SEAL KIT
	2513040	CENTER SECTION (9/16 INLET)			
	70444	CENTER SECTION KIT (9/16 INLET)			
21	9008000-0127	SEAL - LIP 15 x 24 x 7			
22	2003032	SHAFT - MOTOR -A (16T SPLINE W/SNAP RING GROOVE)			
	2003033	SHAFT - MOTOR -C (SERRATION)			
	2003034	SHAFT - MOTOR -B (16T SPLINE)			
23	2003017	BLOCK THRUST WASHER			
25	2003087	SMASHPLATE			