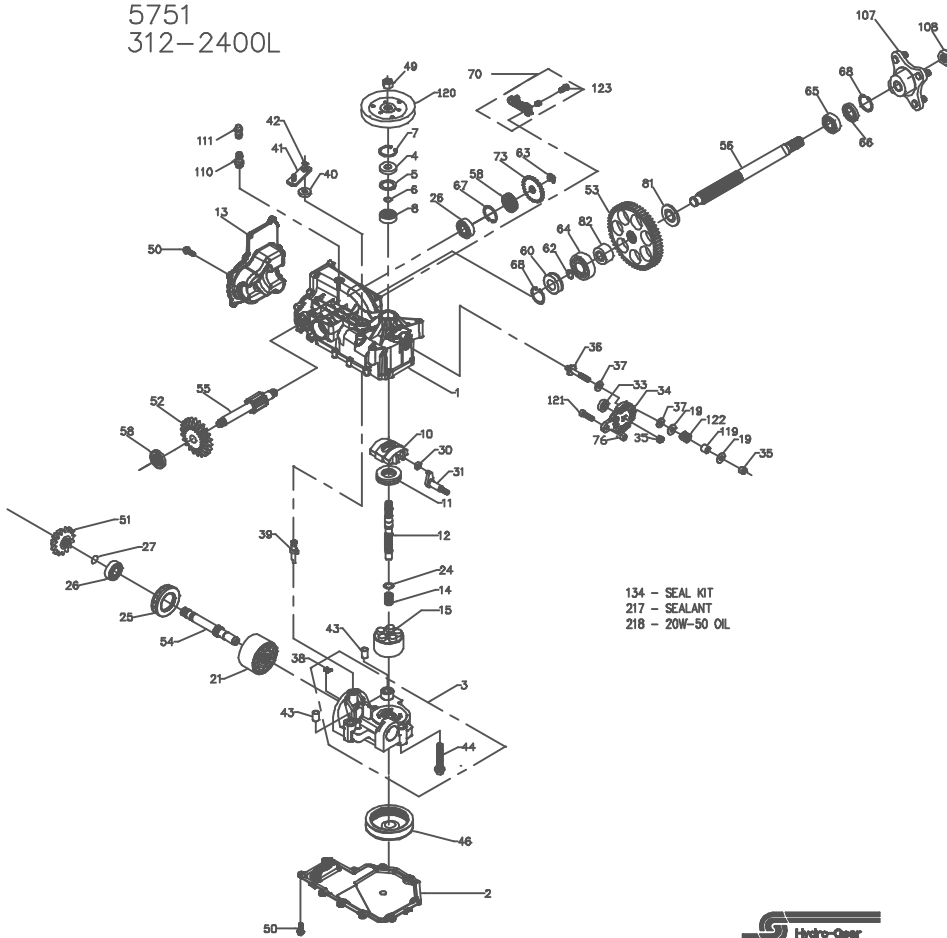


5751
312-2400L



5751
312-2400L

ITEM #	PART #	QTY	DESCRIPTION				
1	70329	1	UPPER HOUSING ASSEMBLY				
		1	UPPER HOUSING				
		2	CRADLE BEARING				
		1	TRUNNION BUSHING				
		1	LIP SEAL				
		2	50890RM	1	LOWER HOUSING		
				1	KIT, CENTER SECTION		
				1	CENTER SECTION		
		3	70667	1	BUSHING .67 X 1.03 X .75		
				1	PLATE, BYPASS		
				3	SCREW 3/8-24 X 2.5		
				2	CHECK PLUG ASSEMBLY, .027		
				1	LIP SEAL		
				4	9008000-0128	1	SPACER
						1	WIRE RETAINING RING
6	2003016			1	RETAINING RING		
7	2003052			1	BALL BEARING		
8	2003043			1	VARIABLE SWASHPLATE		
10	2003087			1	THRUST BEARING 30 X 52 X 13		
11	50551			1	INPUT SHAFT		
12	50005			1	COVER-BACK		
13	50891RM			1	SPRING, BLOCK		
14	2003014			1	10cc CYLINDER BLOCK ASSY		
15	70331	1	10cc CYLINDER BLOCK				
		5	10cc PISTON SPRING				
		5	PISTON SEAT WASHER				
		5	10cc PISTON				
		2	WASHER				
19	44130	2	21cc CYLINDER BLOCK ASSY				
21	70082	1	21cc CYLINDER BLOCK				
		7	21cc PISTON SPRING				
		7	PISTON SEAT WASHER				
		7	10cc PISTON				
		1	WASHER, BLOCK THRUST				
		1	THRUST BEARING 42 X 68 X 16				
		2	BALL BEARING				
26	50315	2	WIRE RETAINING RING				
27	2000022	1	SLOT GUIDE				
30	2000015	1	TRUNNION ARM				
31	50807	1	LIP SEAL				
33	9008000-0126	1	CONTROL ARM				
		2	NUT				
35	50317	2	STUD - LONG 5/16-24				
36	50284	1	FRICTION PUCK				
37	50281	2	KIT, BYPASS PLATE				
38	70680	1	BYPASS ACTUATOR				
39	2003555	1	LIP SEAL				
40	45074	1	BYPASS ARM				
41	50126	1	RETAINING RING				
42	44870	1	RETAINING RING				
43	50002	2	PIN				
44	50016	3	SCREW				
46	50990	1	FILTER				
49	44133	1	NUT-HEX HEAD JAM 1/2-20				
50	50752	18	SCREW, 1/4-20 X .75 LONG				
51	50744	1	14T BEVEL GEAR				

ITEM #	PART #	QTY	DESCRIPTION
52	50745	1	19T BEVEL GEAR
53	50746	1	53T SPUR GEAR
54	50757	1	MOTOR SHAFT
55	70393	1	BRAKE SHAFT KIT
56	50748	1	RETAINING RING 0.440 EXTERNAL
		1	AXLE SHAFT
		2	SEAL, LIP 17 X 40 X 5
		1	SEAL PLUG - SIDE
		1	RETAINING RING - AXLE
		1	RETAINING RING KIT
		1	BEARING-BALL 20X47X14(6204)
		1	BEARING-BALL 25X47X12(6005)
		1	SEAL
		1	RETAINING RING
		1	RETAINING RING-AXLE
		1	RH, BRAKE ARM SERVICE ASSEMBLY
		1	BRAKE ARM
		1	CLEVIS PIN
		1	BUSHING 0.255X0.381X0.330
1	HEX WASHER HEAD SCREW, 1/4-20 X 7/8		
73	50754	1	BRAKE DISC
76	43083	1	HEX NUT 5/16-18
81	50942-2	1	AXLE BUSHING
82	50942-1	1	AXLE BUSHING
106	70314	1	HUB ASSEMBLY
108	50863	1	HUB
		4	LUG BOLT
		1	NUT, HEX 3/4-16
		1	FITTING O-RING ASSEMBLY
110	70110	1	PLASTIC HOSE FITTING
111	70109	1	O-RING
		1	CAP VENT ASSEMBLY
		1	CAP-POPPET VALVE
		1	PLASTIC VENT
		1	SPACER
		1	PULLEY, 4.5
		1	BOLT 5/16-18X1-1/4
		1	HELICAL COMP. SPRING
		1	HEX WASHER HEAD SCREW, 1/4-20 X 7/8
		1	KIT, SEAL
		1	SEAL, LIP 15X35X7 PTC
		1	RING, RETAINING
		1	SEAL, LIP 12X25X7
		1	SEAL, LIP 10X25X7
		1	RING, RETAINING
2	SEAL, LIP 17X40X7		
1	SEAL, LIP 1.85X.32		
1	RING, RETAINING		
1	RING, RETAINING .440 EXTERNAL		
1	SEAL, LIP .98X1.85X.276		
1	RING, RETAINING		
2	RING, RETAINING		
2	SEAL, LIP 17X40X5		
217	50928	1	SEALANT
218		77 oz	20W-50 OIL