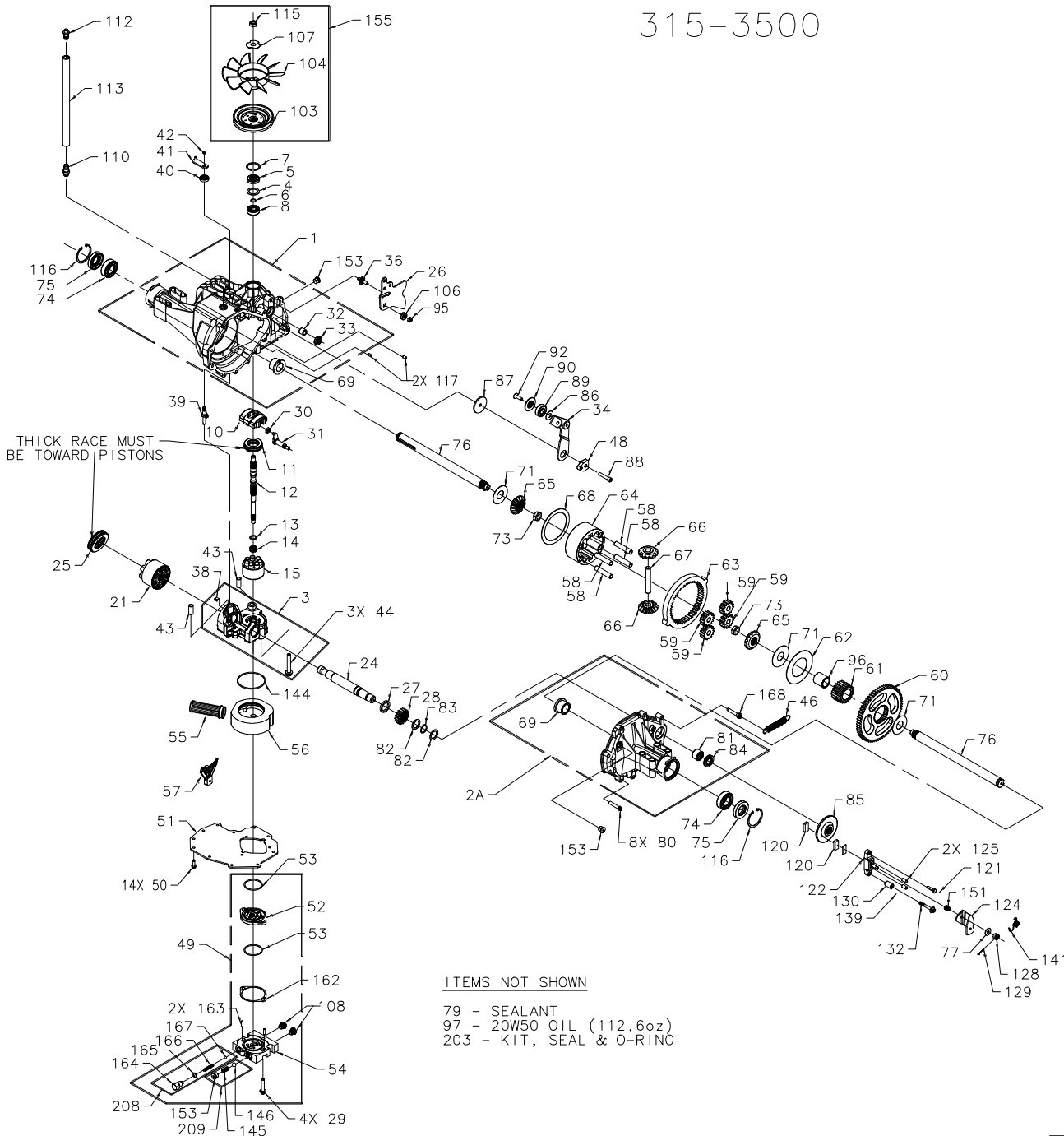


315-3500



315-3500

ITEM #	PART #	QTY	DESCRIPTION	ITEM #	PART #	QTY	DESCRIPTION	ITEM #	PART #	QTY	DESCRIPTION
1	70433	1	HOUSING, MAIN ASSEMBLY	49	71201	1	KIT, AUX	107	51523	1	WASHER, OD SLOTTED .53 X 1.63 X .06
		1	HOUSING, MAIN, CASE DRAIN			4	SCREW, CAP M8 X 1.25 X 40	108	9005200-5600	2	PLUG, 9/16-18 (PLASTIC)
		1	SEAL, LIP 12 X 25 X 7			1	GEROTOR, AUX	110	70110	1	ASSEMBLY, O-RING & FITTING
		1	BEARING, FLANGE 1.0 X 1.376 X .99			2	O-RING, 2.425 X 2.631			1	O-RING, .468 X .624
		1	BUSHING, TRUNNION			1	HOUSING, CHARGE PUMP			1	FITTING, PLASTIC STRAIGHT
		2	BEARING, CRADLE			1	FILTER, AUX CHARGE			1	ASSEMBLY, CAP-VENT
2A	71120	1	ASSEMBLY, RIGHT HAND HOUSING			2	PLUG, 9/16-18 (PLASTIC)	112	70109	1	CAP, VENT
		1	HOUSING, RIGHT HAND			1	O-RING, 2.987 X 3.09			1	VENT, PLASTIC
		1	BEARING, FLANGE 1.0 X 1.376 X .99			1	SPRING, RELIEF			1	HOSE, 0.5 X 20
		1	BEARING, NEEDLE .875 X 1.125 X 1.5			1	BALL, 7/16 IN	113	50632	1	NUT, HEX 1/2-20 W/PATCH
		1	SEAL, LIP .875 X 1.375 X .250			1	PLUG, 9/16-18 (METAL)	115	44133	1	RING, RETAINING
3	70781	1	ASSEMBLY, CENTER SECTION			1	SHIM, AUX MANIFOLD (RED)	116	50859	2	PIN, STANDARD HEADLESS
		1	CENTER SECTION			2	PIN, .187 X .75	117	9004800-2506	2	PUCK, BRAKE
		1	BEARING, JOURNAL .50 X .59 X .50			1	VALVE BODY, AUX RELIEF	120	44132	2	BOLT, HEX HD 1/4-20 X 1 W/PATCH
		1	BEARING .90 X 1.0 X .75			1	O-RING, .468 X .624	122	70633	1	ASSEMBLY, BRAKE YOKE
		1	PLATE, BYPASS			1	SPRING, AUX RELIEF	124	50936	1	ARM, BRAKE
		2	CHECK PLUG ASSEMBLY, .027 BLEED	50	50752	14	BALL, 1/4 IN	125	44127	2	PIN, BRAKE ACTUATING
		3	SCREW, HEX FLANGE 3/8-24 X 2.5	51	51302	1	SCREW, HEX FLANGE 1/4-20 X .75	128	44142	1	NUT, CASTLE 5/16-24
4	2003018	1	SPACER, .98 X 1.37 X .04	52	51049	1	COVER, LOWER W/AUX	129	44101	1	PIN, COTTER 3/32 X 3/4
5	9008000-0128	1	SEAL, LIP 15 X 35 X 7	53	9004100-1430	2	GEROTOR, AUX	130	23711	1	SPACER, .26 X .57 X .87
6	2003016	1	RING, RETAINING	54	70545	1	O-RING, 2.425 X 2.631	131	44134	1	PLATE, PUCK
7	2003052	1	RING, RETAINING			1	ASSEMBLY, AUX MANIFOLD	132	51146	1	BOLT, HEX HD 1/4-20 X 2 W/PATCH
8	2003043	1	BEARING, BALL .59 X 1.38 X .43			1	MANIFOLD, AUX	139	44278	1	WASHER, .27 X .88 X .12
10	2003087	1	SWASHPLATE, VARIABLE	55	51308	1	BUSHING .394 X .472 X .394	141	50884	1	SPRING, BRAKE ARM BIAS
11	50551	1	BEARING, THRUST 30 X 52 X 13	56	51303	1	FILTER, AUX CHARGE	144	50974	1	O-RING, 2.987 X 3.09
12	50960	1	SHAFT, INPUT (AUX CHARGE)	57	50796	1	MANIFOLD, AUX/FILTER	145	51157	1	SPRING, RELIEF
13	2003017	1	WASHER, THRUST .59 X .79 X .04	58	50776	4	RETAINER, MOTOR BEARING	146	9001214-4400	1	BALL, 7/16 IN
14	2003014	1	SPRING, BLOCK	59	50763	4	PIN, CARRIER	151	50919	1	SPRING, COMP. BRAKE ANTI-DRAG
15	70723	1	ASSEMBLY, BLOCK	60	50646	1	GEAR, 15T PLANET	153	9005110-5600	3	PLUG, 9/16-18 (METAL)
		1	BLOCK, CYLINDER	61	50645	1	GEAR, 67T SPUR	155	70489	1	KIT, FAN/PULLEY
		7	PISTON	62	50769	1	GEAR, 21T SUN			1	NUT, HEX 1/2-20 W/PATCH
		7	SPRING, COMPRESSION	63	50764	1	WASHER, THRUST 2.32 X 4.10 X .05			1	WASHER, OD SLOTTED .53 X 1.63 X .06
		7	WASHER, THRUST	64	50765	1	GEAR, 51T RING			1	FAN, 7.0 IN (10 BLADE)
21	70082	1	ASSEMBLY, BLOCK	65	51431	2	CARRIER, PLANETARY	162	51148	1	PULLEY, 4.5 IN
		1	BLOCK, CYLINDER	66	51432	2	GEAR, 14T STEEL MITER (UNSPLINED)	163	50408	2	SHIM, AUX MANIFOLD (RED)
		7	PISTON	67	50766	1	SHAFT, DIFFERENTIAL	164	50967	1	PIN, .187 X .75
		7	SPRING, COMPRESSION	68	50767	1	WASHER, THRUST 3.46 X 4.39 X .05	165	9004201-3700	1	VALVE BODY, AUX RELIEF
		7	WASHER, THRUST	69	50768	2	BEARING, FLANGE 1.0 X 1.376 X .99	166	50968	1	O-RING, .468 X .624
24	50662	1	SHAFT, MOTOR	70	50788	3	WASHER, 1.0 X 2.25 X .04	167	9001214-2500	1	SPRING, AUX RELIEF
25	50552	1	BEARING, THRUST 42 X 68 X 16	71	50791	2	NUT, HEX 5/8-18 W/PATCH	168	51151	1	BALL, 1/4 IN
26	51250	1	ARM, CONTROL	72	50771	2	BEARING, BALL 25.4 X 52 X 15	203	70492	1	SCREW, TORX HD SHOULDERED 5/16-18 X 1.81
27	50774	1	SPACER, 1.03 X 1.38 X .184	73	50772	2	SEAL, LIP 1.0 X 2.049 X .375			1	KIT, SEAL & O-RING
28	50661	1	GEAR, 16T PINION	74	50773	2	SHAFT, AXLE 1.0 X 13.80 (KEY)			1	SEAL, LIP 15 X 35 X 7
29	51301	4	SCREW, CAP M8 X 1.25 X 40	75	50774	2	WASHER, .34 X .88 X .06			1	SEAL, LIP 12 X 25 X 7
30	2000015	1	GUIDE, SLOT	76	50663	10.1oz	SEALANT			1	SEAL, LIP 10 X 25 X 7
31	50807	1	ARM, TRUNNION TAPERED SQUARE	77	44130	8	SCREW, TORX HD 5/16-18 X 1.5			1	O-RING, 2.425 X 2.631
32	2003009	1	BEARING, TRUNNION	79	50928	1	BEARING, NEEDLE .875 X 1.125 X .75			2	SEAL, LIP 1.0 X 2.049 X .375
33	9008000-0126	1	SEAL, LIP 12 X 25 X 7	80	50868	1	WASHER, FLAT .88 X 1.25 X .04			1	SEAL, LIP .875 X 1.375 X .250
34	51127	1	ARM, RETURN	81	44752	1	RING, RETAINING			1	KIT, MANIFOLD O-RING
36	50426	1	STUD, SHORT 5/16-24	82	50777	2	SEAL, LIP .875 X 1.375 X .250			1	SHIM, CHARGE PUMP (RED)
38	70680	1	KIT, BYPASS PLATE	83	50775	1	DISK, BRAKE			1	KIT, AUX RELIEF VALVE
39	2003555	1	ACTUATOR, BYPASS	84	50773	1	WASHER, .51 X 1.0 X .03			1	VALVE BODY, AUX RELIEF
40	45074	1	SEAL, LIP 10 X 25 X 7	85	50779	1	SPACER, .32 X 1.96 X .15	208	2510082	1	SPRING, AUX RELIEF
41	50126	1	ARM, BYPASS	86	50132	1	SCREW, SOCKET HD CAP 5/16-24 X 1.5			1	BALL, 1/4 IN
42	44870	1	RING, RETAINING	87	50836	1	BEARING, BALL .62 X 1.38 X .44			1	O-RING, .468 X .624
43	50002	2	PIN, HOLLOW .39 X .50 X 1.12	88	50837	1	SPACER, LOCATING			1	KIT, CHARGE RELIEF
44	50016	3	SCREW, HEX FLANGE 3/8-24 X 2.5	89	44147	1	SCREW, COUNTERSUNK 5/16-18 X 1.0	209	70544	1	SPRING, RELIEF
46	51199	1	SPRING, 4 IN RETURN (MEDIUM)	90	51200	1	NUT, HEX LOCK 5/16-24 (NYLON INSERT)			1	BALL, 7/16 IN
48	51097	1	PUCK, ADJUSTING	92	50870	1	BUSHING, SLEEVE 1.0 X 1.3 X 1.34			1	PLUG, 9/16-18 (METAL)
				95	50108	1	OIL, 20W50				
				96	50866	1	PULLEY, 4.5 IN				
				97		112.6oz	FAN, 7.0 IN (10 BLADE)				
				103	51875	1	SPACER, TRUNNION				
				104	51862	1					
				106	51604	1					

P4

REV'D ITEM #111 TO BE #112
ADD'D (QTY 3) 50016 TO ITEM #3 C/S KIT
DEL'D ITEM #2B 71139 KIT, BRAKE BOLT
REV'D ITEM #121 51927 TO 44433
REV'D ITEM #132 51928 TO 51146
04/21/06 K. RAWSKI
REV'D ITEM #65 51411 TO 51431
REV'D ITEM #66 51410 TO 51432
ECN #18466
08/24/06 J PROBST