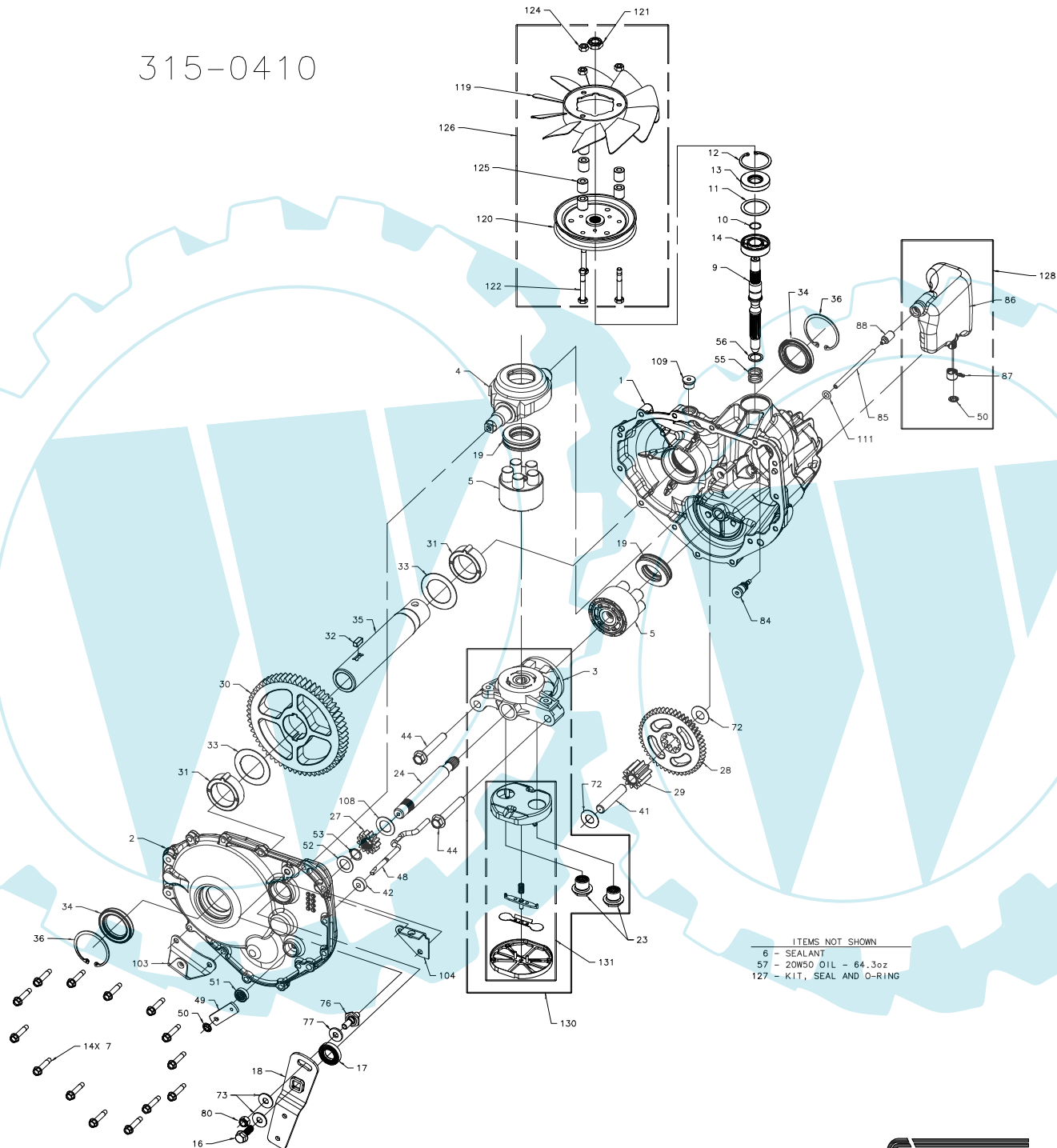


315-0410



ITEMS NOT SHOWN  
6 - SEALANT  
57 - 20W50 OIL - 64.3oz  
127 - KIT, SEAL AND O-RING

FOR ENTIRE MODEL REPLACEMENT  
REFERENCE 316-0410

Ihr Ersatzteilspezialist im Internet

315-0410

ITEM	PART #	QTY	DESCRIPTION
1	70830	1	ASSEMBLY, MAIN HOUSING
		1	HOUSING, MAIN
		1	BUSHING .865 X .985 X .790
		2	PIN, STANDARD HEADLESS
2	70831	1	ASSEMBLY, SIDE HOUSING
		1	HOUSING, SIDE
		1	BUSHING .624 X .719 X .562
		1	BUSHING .865 X .985 X .790
3	70477	1	ASSEMBLY, CENTER SECTION
		1	CENTER SECTION (5-PISTON)
		1	BUSHING .707 X .788 X .591
4	51048	1	TRUNNION, SWASHPLATE
5	70331	2	ASSEMBLY, BLOCK
		1	BLOCK, CYLINDER
		5	PISTON
		5	SPRING, COMPRESSION
		5	WASHER, THRUST
6	50928	10.1 OZ	SEALANT
7	51190	14	SCREW, HEX WASHER 1/4-20 X 1.25
9	51062	1	SHAFT, INPUT
10	2000022	1	RING, RETAINING
11	50951	1	WASHER, FLAT 1.23 X 1.57 X .04
12	50329	1	RING, RETAINING
13	51161	1	SEAL, LIP 17 X 40 X 7
14	50315	1	BEARING, BALL 17 X 40 X 12
16	51064	1	BOLT, HEX FLANGE 5/16-24 X .94 W/PATCH
17	51140	1	SEAL, LIP 18 X 32 X 7
18	51680	1	ARM, CONTROL
19	50551	2	BEARING, THRUST 30 X 52 X 13
23	51485	2	CHECK PLUG ASSEMBLY, .027 BLEED, WASHER, SPRING
24	51661	1	SHAFT, MOTOR
27	51130	1	GEAR, 13T PINION
28	51129	1	GEAR, 10T/48T
29	51043	1	GEAR, 10T JACKSHAFT
30	51728	1	GEAR, 60T BULL
31	51920	2	BUSHING, SLEEVE 2.025 X 1.226 X .625
32	51861	1	KEY, SQUARE .250 X .620
33	51922	2	WASHER, 2.225 X 1.475 X .04
34	51918	2	SEAL, LIP 1.457 X 2.087 X .276
35	51868	1	AXLE, TUBE 1.01 X 1.457/1.354 X 8.08 KEYED
36	52026	2	RING, INTERNAL RETAINING N5000-200
41	51083	1	PIN, JACKSHAFT .50 X 2.43
42	51100	1	MAGNET, RING
44	50016	2	BOLT, HEX FLANGE 3/8-24 X 2.5
48	51668	1	ROD, ACTUATOR BYPASS
49	51669	1	ARM, BYPASS
50	51116	2	RING, RETAINING .250 EXTERNAL
51	51081	1	SEAL, LIP .250 X .750 X .250 TC
52	44371	1	WASHER, FLAT .63 X 1.00 X .05
53	44145	1	RING, RETAINING
55	2003014	1	SPRING, BLOCK
56	2003017	1	WASHER, THRUST .59 X .79 X .04
57		64.3oz	OIL, 20W50

ITEM	PART #	QTY	DESCRIPTION
72	50132	2	WASHER, FLAT .51 X 1.0 X .03
73	44130	2	WASHER, FLAT .34 X .88 X .06
76	50426	1	STUD 5/16-24
77	50281	1	PUCK, FRICTION
80	50317	1	NUT, HEX LOCK 5/16-24 W/NYLON INSERT
84	51143	1	FITTING, 5/16 SAE 5/32 TUBE
85	51672	1	HOSE, .1875 IN EXPANSION TANK
86	52067	1	TANK, EXPANSION ASSEMBLY
87	51251	1	CAP, EXPANSION
88	51674	1	WEIGHT, Ø5/32 BARBED
103	51679	1	BRACKET, TORQUE
104	51681	1	BRACKET, TORQUE
107	51134	1	DEFLECTOR
108	51069	1	WASHER, FLAT .71 X 1.16 X .04
109	9005110-5600	1	PLUG, 9/16-18 (METAL)
111	51144	1	O-RING, .299 x .505 x .103
119	50927	1	FAN, 7.0 IN (10 BLADE) (CCW)
120	51182	1	PULLEY, 4.5 IN
121	51244	1	NUT, HEX LOCK 1/2-20 W/NYLON INSERT
122	44300	3	BOLT, 1/4-20 X 2.0 W/PATCH
124	43178	3	NUT, HEX 1/4-20
125	50259	6	SPACER, .571 X .260 X .618
126	71305	1	KIT, FAN/PULLEY
		1	FAN, 7.0 IN (10 BLADE) (CCW)
		1	PULLEY, 4.5 IN
		1	NUT, HEX LOCK 1/2-20 W/NYLON INSERT
		3	BOLT, 1/4-20 X 2.0 W/PATCH
		3	NUT, HEX 1/4-20
		6	SPACER, .571 X .260 X .618
127	70832	1	KIT, SEAL & O-RING
		1	SEAL, LIP .250 X .750 X .250 TC
		1	SEAL, LIP 18 X 32 X 7
		1	O-RING, .299 x .505 x .103
		2	SEAL, LIP 1.457 X 2.087 X .276
		1	SEAL, LIP 17 X 40 X 7
128	71303	1	KIT, EXPANSION TANK
		1	TANK, EXPANSION ASSEMBLY
		1	CAP, BARBED VENT
		1	RING, RETAINING .250 EXTERNAL
130	70829	1	ASSEMBLY, CENTER SECTION, FILTER, BYPASS
		1	KIT, CENTER SECTION (5-PISTON)
		2	CHECK PLUG, .027 BLEED, WASHER, SPRING
		1	KIT, FILTER
131	71029	1	KIT, FILTER
		1	FILTER
		1	BASE, FILTER
		1	DEFLECTOR
		1	SPRING, BYPASS
		1	ACTUATOR, BYPASS

FOR ENTIRE MODEL REPLACEMENT  
REFERENCE 316-0410

Ihr Ersatzteilspezialist im Internet



P3

UPDATED DESCRIPTIONS &  
FRAME

REV'D ITEM 3  
51208 TO 70477

REV'D ITEM 6 QTY  
10.5 TO 10.1

REV'D ITEM 57 QTY  
59 TO 64.3

ADD'D "FOR ENTIRE MODEL  
REPLACEMENT REFERENCE

316-0410 "

ECN #19432

08/29/06 J PROBST