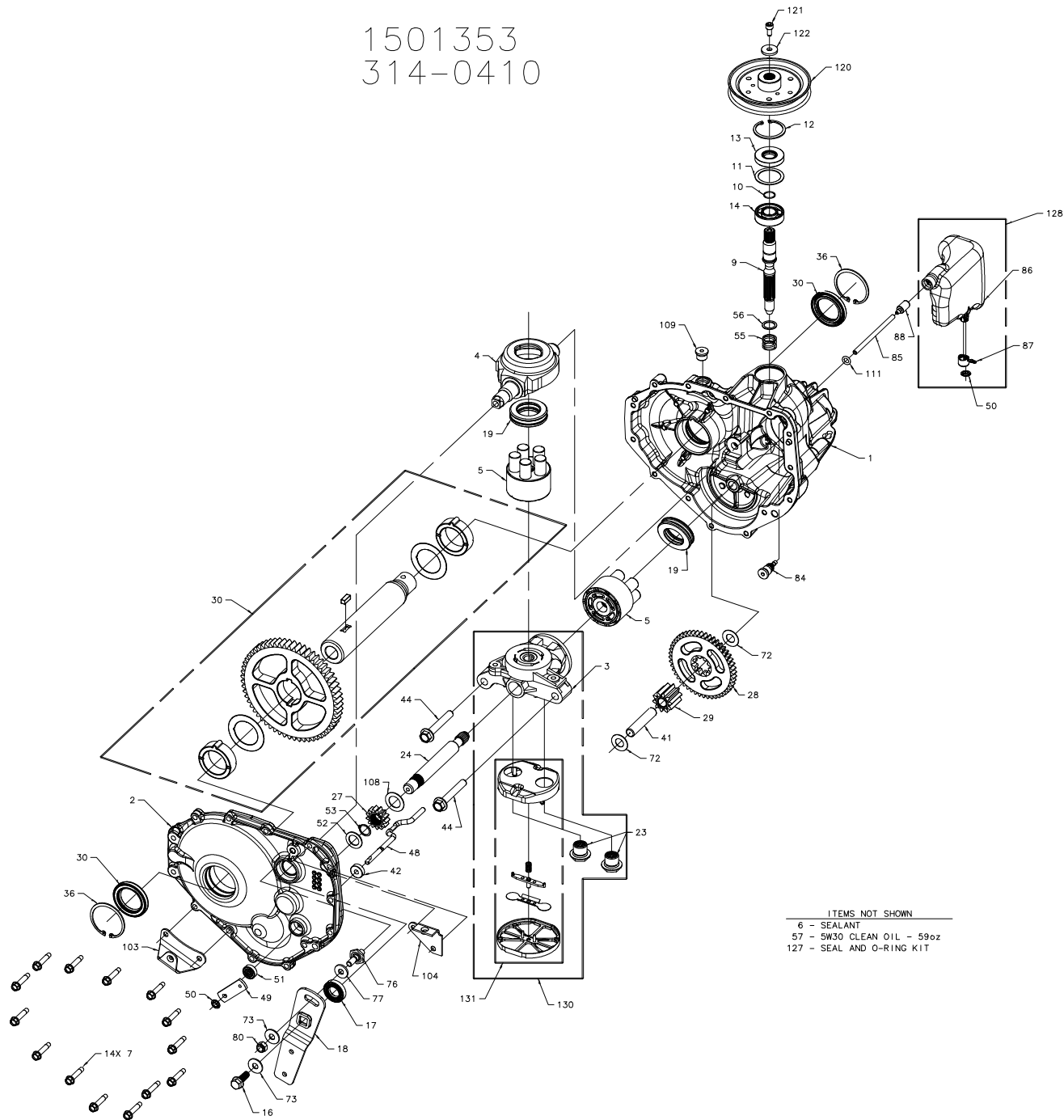
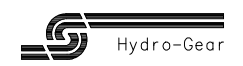


1501353  
314-0410



ITEMS NOT SHOWN  
 6 - SEALANT  
 57 - 5W30 CLEAN OIL - 59oz  
 127 - SEAL AND O-RING KIT

FOR ENTIRE MODEL REPLACEMENT  
 REFERENCE 722159 (317-0410)



1501353  
314-0410

ITEM	PART #	QTY	DESCRIPTION
1	70830	1	MAIN HOUSING ASSEMBLY
		1	HOUSING, MAIN
		1	BUSHING .865 X .985 X .790
		2	PIN, STANDARD HEADLESS
2	70831	1	SIDE HOUSING ASSEMBLY
		1	HOUSING, SIDE
		1	BUSHING, .624 X .719 X .562
		1	BUSHING .865 X .985 X .790
3	51208	1	CENTER SECTION
		1	BUSHING .707 X .786 X .591
4	51048	1	TRUNNION, SWASHPLATE
5	70331	2	ASSEMBLY, BLOCK
		1	BLOCK, CYLINDER
		5	SPRING, COMPRESSION
		5	WASHER, THRUST
		5	PISTON
6	50928	10.1 OZ	SEALANT
7	51190	14	SCREW, HEX WASHER 1/4-20 X 1.125
9	51662	1	SHAFT, INPUT
10	2000022	1	RING, RETAINING
11	50951	1	SPACER
12	50329	1	RING, RETAINING
13	51161	1	SEAL, LIP 17 X 40 X 7
14	50315	1	BEARING, BALL 17MM ID X 40MM OD X 12MM
16	51064	1	BOLT, HEX FLANGE HEAD 5/16-24 X .94 (PATCH)
17	51140	1	SEAL, LIP 18 X 32 X 7
18	51680	1	ARM, CONTROL
19	50551	2	BEARING, THRUST 30 X 52 X 13
23	51485	2	CHECK PLUG ASSEMBLY, .027 WASHER SPRING
24	51661	1	SHAFT, MOTOR
27	51130	1	GEAR, 13T PINION
28	51129	1	GEAR, 10T / 48T
29	51043	1	GEAR, 10T JACK SHAFT
30	71319	1	KIT, BULL GEAR / AXLE TUBE
		1	TUBE, .756 X 1.457 / 1.118 X 8.08 KEYED
		1	GEAR, 60T BULL KEY
		2	BUSHING, SLEEVE (INBOARD)
		1	KEY, SQUARE .250 X .620
		2	WASHER, 2.225 X 1.475 X .04
		2	SEAL, LIP 1.457 X 2.087 X .276
		1	BULLETIN, BULL GEAR / AXLE TUBE
36	52026	2	RING, INTERNAL RETAINING N5000-200
41	51083	1	PIN, JACKSHAFT
42	51100	1	MAGNET, RING
44	50016	2	BOLT, HEX FLANGE HEAD 3/8-24 X 2.5 LONG
48	51668	1	ROD, ACTUATOR BYPASS
49	51669	1	ARM, BYPASS

ITEM	PART #	QTY	DESCRIPTION
50	51116	2	RING, RETAINING .250 EXTERNAL
51	51081	1	SEAL, LIP .250 X .750 X .250 TC
52	44371	1	WASHER, FLAT 5/8 IDX 1.0 OD X .05 THK
53	44145	1	RING, RETAINING
55	2003014	1	SPRING, BLOCK
56	2003017	1	WASHER, THRUST
57		59 OZ	OIL, 5W30 CLEAN
72	50132	2	WASHER, HT .5 ID X 1 O.D. X .032
73	44130	2	WASHER, FLAT 11/32 ID X 7/8 OD
76	50426	1	STUD 5/16-24
77	50281	1	PUCK, FRICTION
80	50317	1	NUT, HEX LOCK 5/16-24 UNJF (NYLON INSERT)
84	51143	1	FITTING 5/16 SAE, 5/32 TUBE
85	51672	1	HOSE, EXPANSION TANK 3/16
86	52067	1	TANK, EXPANSION
87	51251	1	CAP, BARBED EXPANSION
88	51674	1	WEIGHT, Ø5/32 BARBED
103	51679	1	BRACKET, TORQUE
104	51681	1	BRACKET, TORQUE
107	51134	1	DEFLECTOR
108	51069	1	WASHER, MOTOR SHAFT .71 ID X 1.6 OD X .04 THK
109	9005110-5600	1	PLUG, 9/16-18 (METAL)
111	51144	1	O-RING .103 ID X .299 OD
113	51147	1	HOSE, EXPANSION TANK
120	51182	1	PULLEY Ø4.5 X .665
121	51546	1	SCREW, SOCKET HEAD CAP M6 X 1.0-12 (PATCH)
122	44278	1	WASHER, .260 ID X 7/8 OD X 1/8 THK
127	70832		KIT, SEAL & O-RING
		1	SEAL, LIP .250 X .750 X .250 TC
		1	SEAL, LIP 18 X 32 X 7
		1	O-RING .103 ID X .299 OD
		2	SEAL, LIP 1.457 X 2.087 X .276
		1	SEAL, LIP 17 X 40 X 7
128	71303	1	KIT, EXPANSION TANK
		1	CAP, BARBED EXPANSION
		1	RING, RETAINING .250 EXTERNAL
130	70829	1	CENTER SECTION, FILTER, BYPASS ASSEMBLY
		1	ASSEMBLY, CENTER SECTION
		2	CHECK PLUG ASSEMBLY, .027 WASHER SPRING
		1	KIT, FILTER
131	71029	1	KIT, FILTER
		1	BOTTOM, FILTER
		1	BASE, FILTER
		1	DEFLECTOR
		1	SPRING, BYPASS
		1	ACTUATOR, BYPASS

FOR ENTIRE MODEL REPLACEMENT  
REFERENCE 722159 (317-0410)

