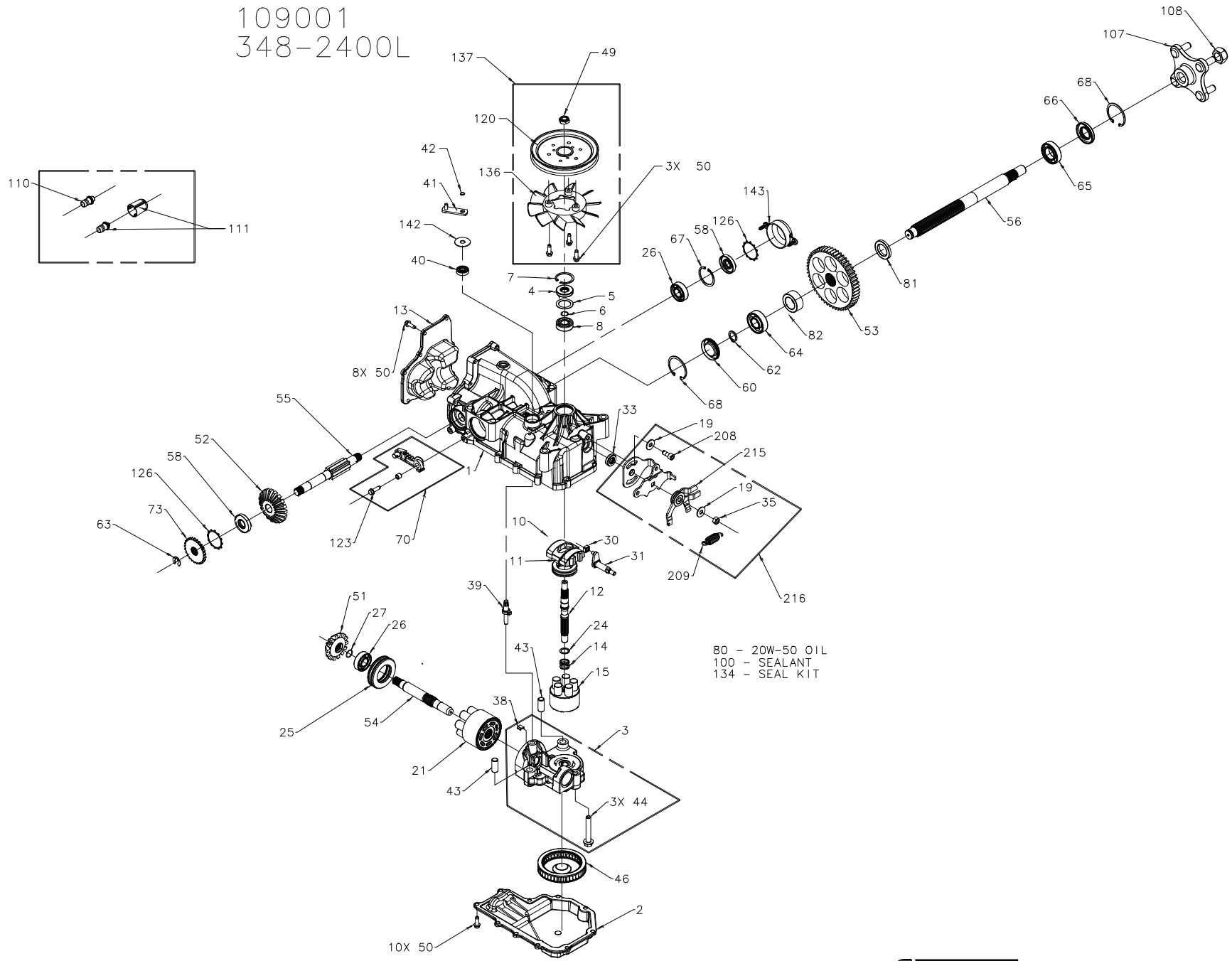


109001
348-2400L



P5

ADDED NEW FRAME

REV'D ITEM 35, P/N 50317

TO P/N 52506

REMOVED ITEM 204, P/N 51393,

QTY 1, DESC ARM, RTN SCISSOR, OUTER

REMOVED ITEM 205, P/N 51722,

QTY 1, DESC ARM, RTN SCISSOR, INNER

REMOVED ITEM 207, P/N 51604,

QTY 1, DESC SPACER, RTN

REV'D ITEM 215, P/N 51408,

QTY 2, DESC WASHER, NYLON TO

P/N 52412, QTY 1, DESC ASSEMBLY, RTN

ECN#19696