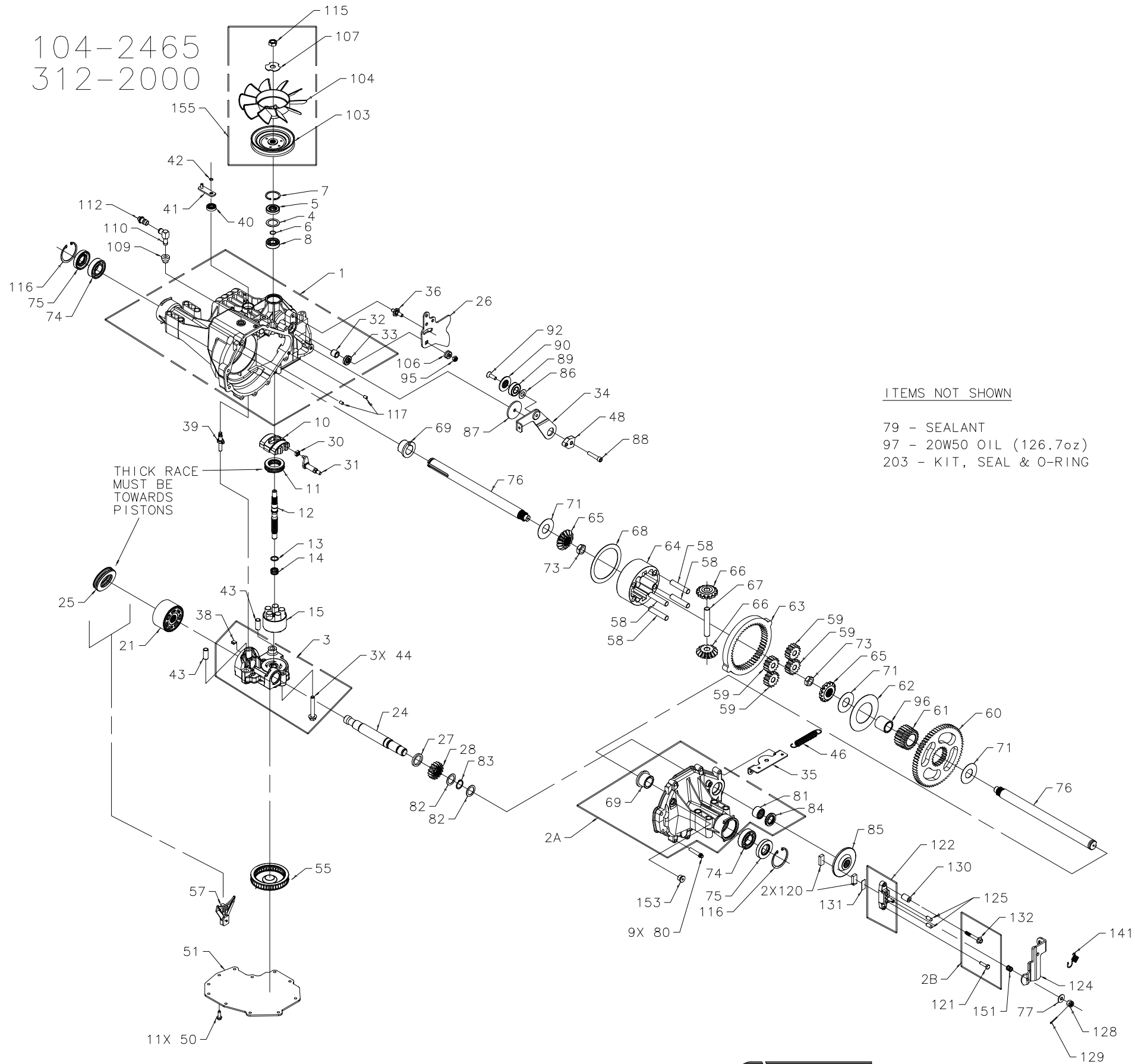


104-2465  
312-2000



104-2465  
312-2000

ITEM#	PART #	QTY	DESCRIPTION	ITEM#	PART #	QTY	DESCRIPTION	ITEM#	PART #	QTY	DESCRIPTION
1	70297	1	ASSEMBLY, MAIN HOUSING	31	50807	1	ARM, TRUNNION TAPERED SQUARE	88	50837	1	SCREW, SOCKET HD CAP 5/16-24 X 1.5
		1	HOUSING, MAIN	32	2003009	1	BEARING, TRUNNION	89	44147	1	BEARING, .62 X 1.38 X .44
		1	SEAL, LIP 12 X 25 X 7	33	9008000-0126	1	SEAL, LIP 12 X 25 X 7	90	51200	1	SPACER, LOCATING
		1	BEARING, FLANGE 1.0 X 1.376 X .99	34	51257	1	ARM, RETURN	92	50870	1	SCREW, COUNTERSUNK 5/16-18 X 1.0
		1	BEARING, TRUNNION	35	51243	1	BRACKET, BELL CRANK	95	50108	1	NUT, HEX LOCK 5/16-24 W/NYLON INSERT
		2	BEARING, CRADLE	36	50426	1	STUD, SHORT 5/16-24	96	50866	1	BUSHING, SLEEVE 1.0 X 1.3 X 1.34
2A	71120	1	ASSEMBLY, RIGHT HAND HOUSING	38	70680	1	KIT, BYPASS PLATE	97		126.7oz	OIL, 20W50
		1	HOUSING, RIGHT HAND	39	2003555	1	ACTUATOR, BYPASS	103	51875	1	PULLEY, 4.5 IN
		1	BEARING, FLANGE 1.0 X 1.376 X .99	40	45074	1	SEAL, LIP 10 X 25 X 7	104	51862	1	FAN, 7.0 IN (10 BLADE)
		1	BEARING, NEEDLE .875 X 1.125 X .75	41	50270	1	ARM, BYPASS	106	51604	1	SPACER, TRUNNION
		1	SEAL, LIP .875 X 1.375 X .250	42	44870	1	RING, RETAINING	107	51523	1	WASHER, OD SLOTTED .53 X 1.63 X .06
2B	71139	1	KIT, BRAKE BOLT	43	50002	2	PIN, HOLLOW .39 X .50 X 1.12	109	50133	1	BUSHING, VENT (RUBBER)
		1	BOLT, HEX HD 1/4-20 X 1 W/PATCH	44	50016	3	SCREW, HEX FLANGE 3/8-24 X 2.5	110	50308	1	FITTING, 90° METAL VENT
		1	BOLT, HEX HD 1/4-20 X 2 W/PATCH	46	51199	1	SPRING, 4 IN RETURN (MEDIUM)	112	70109	1	ASSEMBLY, CAP-VENT
3	70681	1	ASSEMBLY, CENTER SECTION	48	51097	1	PUCK, ADJUSTING	115	44133	1	NUT, HEX 1/2-20 W/ PATCH
		1	CENTER SECTION	50	50752	11	SCREW, HEX FLANGE 1/4-20 X .75	116	50859	2	RING, RETAINING
		1	BEARING .90 X 1.0 X .75	51	51128	1	COVER, LOWER W/O KIDNEYS	117	9004800-2506	2	PIN, STANDARD HEADLESS
		1	PLATE, BYPASS	55	50990	1	FILTER, NO CHARGE	120	44132	2	PUCK, BRAKE
		1	CHECK PLUG ASSEMBLY, .027	57	50796	1	RETAINER, MOTOR BEARING	121	44433	1	BOLT, HEX HD 1/4-20 X 1 W/PATCH
		1	CHECK PLUG ASSEMBLY, NO BLEED	58	50776	4	PIN, CARRIER	122	70633	1	ASSEMBLY, BRAKE YOKE
		3	SCREW, HEX FLANGE 3/8-24 X 2.5	59	50763	4	GEAR, 15T PLANET	124	51361	1	ARM, BRAKE
4	2003018	1	SPACER, .98 X 1.37 X .04	60	50646	1	GEAR, 67T SPUR	125	44127	2	PIN, BRAKE ACTUATING
5	9008000-0128	1	SEAL, LIP 15 X 35 X 7	61	50645	1	GEAR, 21T SUN	128	44142	1	NUT, CASTLE 5/16-24
6	2003016	1	RING, RETAINING	62	50769	1	WASHER, THRUST 2.32 X 4.10 X .05	129	44101	1	PIN, COTTER 3/32 X 3/4
7	2003052	1	RING, RETAINING	63	50764	1	GEAR, 51T RING	130	23711	1	SPACER, .26 X .57 X .87
8	2003043	1	BEARING, BALL .59 X 1.38 X .43	64	50765	1	CARRIER, PLANETARY	131	44134	1	PLATE, PUCK
10	2003087	1	SWASHPLATE, VARIABLE	65	50647	2	GEAR, 14T MITER (SPLINED)	132	51146	1	BOLT, HEX HD 1/4-20 X 2 W/PATCH
11	50551	1	BEARING, THRUST 30 X 52 X 13	66	50648	2	GEAR, 14T MITER (UNSPLINED)	141	50884	1	SPRING, BRAKE ARM BIAS
12	50005	1	SHAFT, INPUT (NO CHARGE)	67	50766	1	SHAFT, DIFFERENTIAL	151	50919	1	SPRING, COMP. BRAKE ANTI-DRAG
13	2003017	1	WASHER, THRUST .59 X .79 X .04	68	50767	1	WASHER, THRUST 3.46 X 4.39 X .05	153	9005110-5600	1	PLUG, 9/16-18 (METAL)
14	2003014	1	SPRING, BLOCK	69	50768	2	BEARING, FLANGE 1.0 X 1.376 X .99	155	70489	1	KIT, FAN/PULLEY
15	70331	1	ASSEMBLY, BLOCK	71	50788	3	WASHER 1.0 X 2.25 X .04			1	NUT, HEX 1/2-20 W/ PATCH
		1	BLOCK, CYLINDER	73	50791	2	NUT, HEX 5/8-18 W/ PATCH			1	WASHER, OD SLOTTED .53 X 1.63 X .06
		5	PISTON	74	50771	2	BEARING, BALL 25.4 X 52 X 15			1	FAN, 7.0 IN (10 BLADE)
		5	SPRING, COMPRESSION	75	50772	2	SEAL, LIP 1.0 X 2.049 X .375			1	PULLEY, 4.5 IN
		5	WASHER, THRUST	76	50663	2	SHAFT, AXLE, 1 X 13.80 (KEY)			1	KIT, SEAL & O-RING
21	70082	1	ASSEMBLY, BLOCK	77	44130	1	WASHER .34 X .88 X .06	203	70492	1	SEAL, LIP 15 X 35 X 7
		1	BLOCK, CYLINDER	79	50928	10.1oz	SEALANT			1	SEAL, LIP 12 X 25 X 7
		7	PISTON	80	50868	9	SCREW, TORX HD 5/16-18 X 1.5			1	SEAL, LIP 10 X 25 X 7
		7	SPRING, COMPRESSION	81	44752	1	BEARING, NEEDLE .875 X 1.125 X .75			2	SEAL, LIP 1.0 X 2.049 X .375
		7	WASHER, THRUST	82	50777	2	WASHER, FLAT .88 X 1.25 X .04			1	SEAL, LIP .875 X 1.375 X .250
24	50662	1	SHAFT, MOTOR	83	50775	1	RING, RETAINING				
25	50552	1	BEARING, THRUST 42 X 68 X 16	84	50773	1	SEAL, LIP .875 X 1.375 X .250				
26	51250	1	ARM, CONTROL	85	50779	1	DISK, BRAKE				
27	50774	1	SPACER, 1.03 X 1.38 X .184	86	50132	1	WASHER, .51 X 1.0 X .03				
28	50661	1	GEAR, 16T PINION	87	50836	1	SPACER, .32 X 1.96 X .15				
30	2000015	1	GUIDE, SLOT								





UPDATED FOR BEACON

CHANGES

ECN #17952

02/27/06 C. GOONAN

03/01/06 C. GOONAN