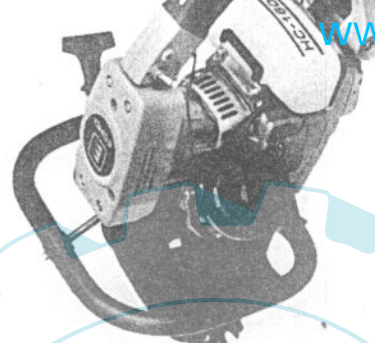


**ECHO**

[www.ersatzteil-service.de](http://www.ersatzteil-service.de)



# OPERATOR'S MANUAL

## ECHO

### HEDGE TRIMMER

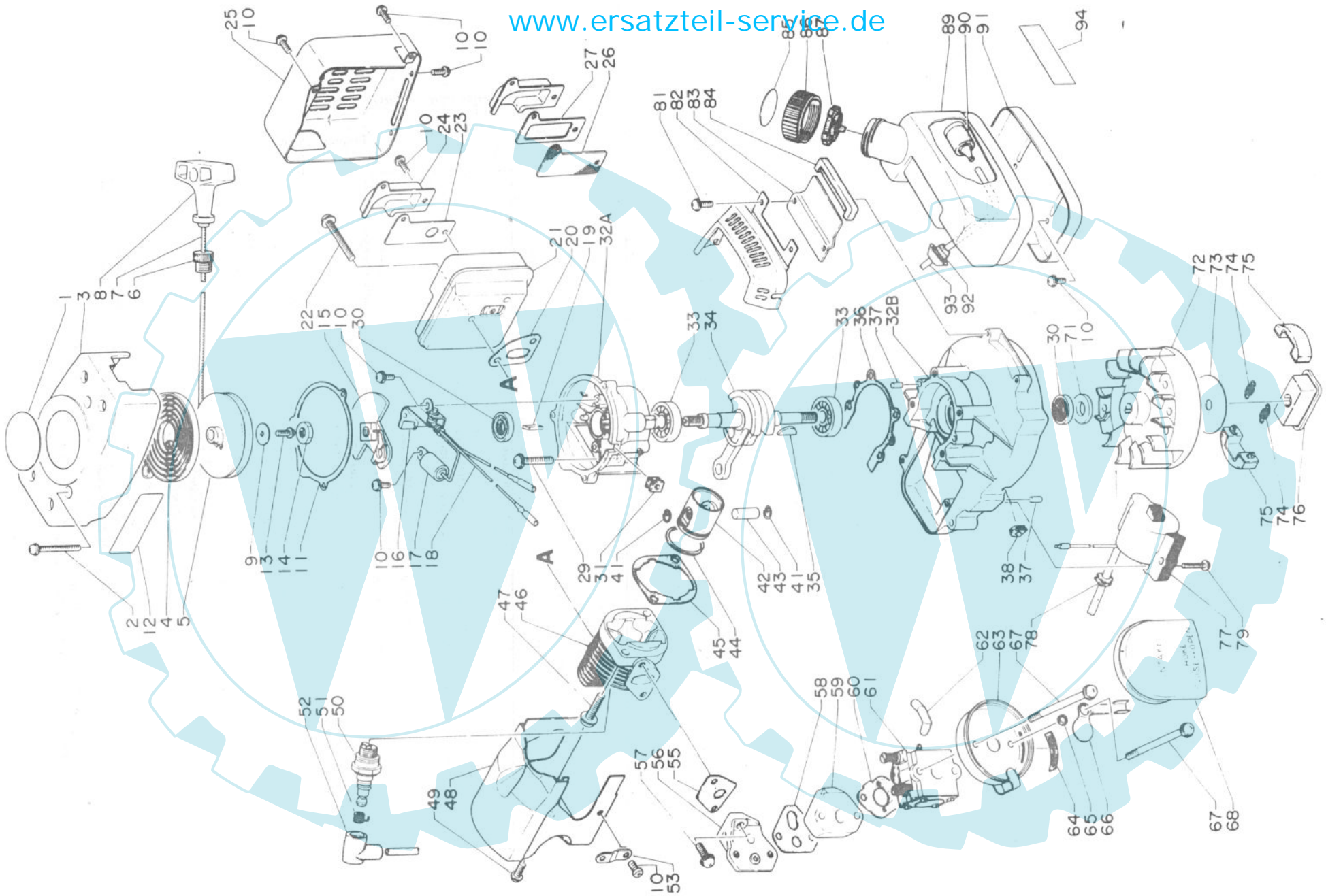
#### HC-160

**5**

**CAUTION**  
Read Rules for Safe Operation  
and Instructions Carefully

898 571-0306 1

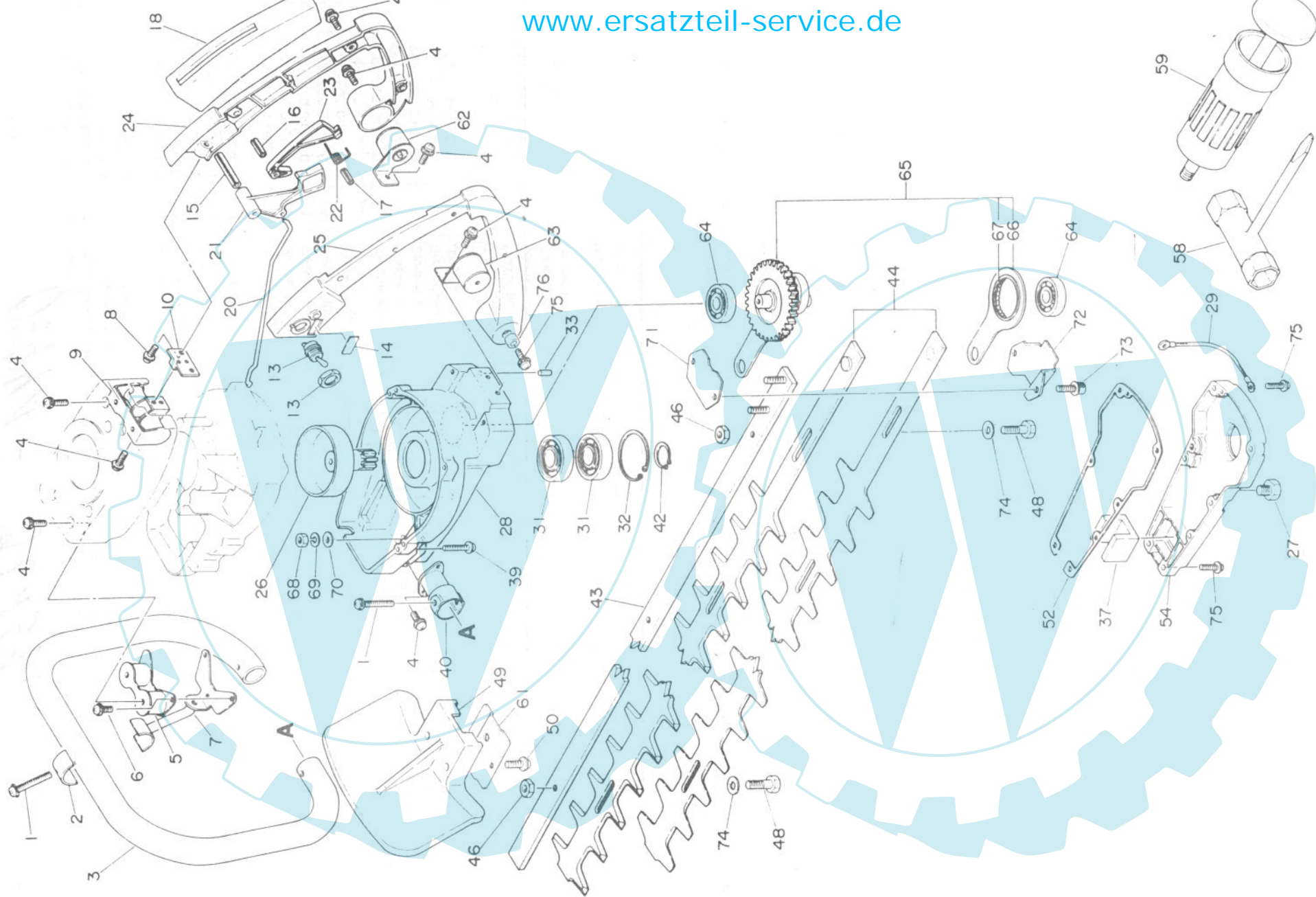
Ihr Ersatzteilspezialist im Internet



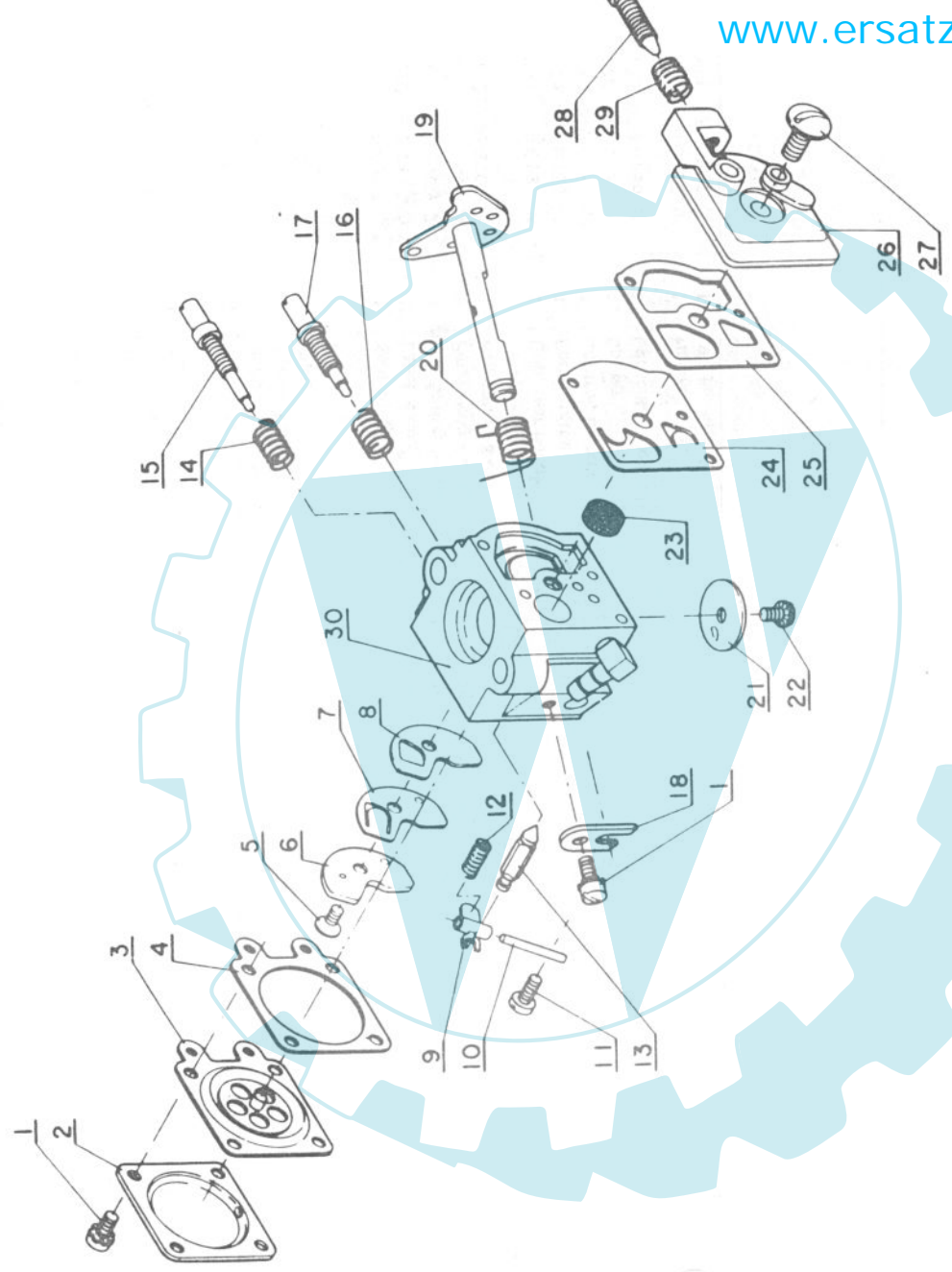
| Key No. | Part Number     | Q'ty | Description                | Key No. | Part Number     | Q'ty | Description         |
|---------|-----------------|------|----------------------------|---------|-----------------|------|---------------------|
| 1- 1    | 890 112-0603 1  | 1    | Decal, ECHO                | 1-52    | 159 012-0162 0  | 1    | Cap, spark plug     |
| 2       | 900 242-0404 0  | 3    | Screw 4x40                 | 53      | 101 518-0136 0  | 1    | Bracket             |
| 3       | 177 200-0136 1  | 1    | Recoil starter ass'y       | 55      | 130 010-0136 0  | 1    | Gasket              |
| 4       | -177 209-0136 0 | 1    | Starter case               | 56      | 130 013-0136 0  | 1    | Base, insulator     |
| 5       | -177 220-0653 0 | 1    | Rewind spring              | 57      | 900 242-0501 6  | 2    | Screw 5x16          |
| 6       | -177 215-0492 0 | 1    | Recoil drum                | 58      | 130 022-0136 0  | 1    | Gasket              |
| 7       | -177 227-0533 0 | 1    | Rope guide                 | 59      | 130 017-0136 0  | 1    | Insulator           |
| 8       | -177 226-0393 0 | 1    | Rope                       | 60      | 130 016-0492 1  | 1    | Gasket              |
| 9       | -177 228-0653 0 | 1    | Starter handle             | 61      | 123 000-0136 0  | 1    | Carburetor ass'y    |
| 10      | -177 214-0463 0 | 1    | Washer                     | 62      | 130 110-0136 0  | 1    | Tube                |
| 11      | -900 241-0401 0 | 1    | Screw 4x10                 | 63      | 130 301-0136 0  | 1    | Case, air cleaner   |
| 12      | 900 242-0401 0  | 9    | Screw 4x10                 | 64      | -178 810-0653 0 | 1    | Grommet             |
| 13      | 100 615-0492 0  | 1    | Gasket, starter case       | 65      | 178 516-0083 0  | 1    | Spacer              |
| 14      | 890 160-0393 0  | 1    | Decal, caution             | 66      | 178 515-0136 0  | 1    | Choke shutter       |
| 15      | 900 502-0000 8  | 1    | Nut 8                      | 67      | 900 242-0505 7  | 2    | Screw 5x57          |
| 16      | 177 305-0492 0  | 1    | Ratchet ass'y              | 68      | 130 310-0306 0  | 1    | Air filter          |
| 17      | 150 101-0492 0  | 1    | Breaker point set          | 71      | 100 132-0653 0  | 1    | Washer              |
| 18      | 150 127-0492 0  | 1    | Condenser                  | 72      | 150 200-0492 0  | 1    | Flywheel            |
| 19      | 150 505-0632 0  | 1    | Ground lead                | 73      | 175 019-0492 0  | 1    | Side plate          |
| 20      | 156 134-0373 0  | 1    | Oil pad                    | 74      | 175 018-0653 0  | 2    | Clutch spring       |
| 21      | 145 510-2193 0  | 1    | Gasket, muffler            | 75      | 175 017-0463 0  | 2    | Clutch shoe         |
| 22      | 145 806-0632 0  | 1    | Muffler body               | 76      | 175 016-0492 0  | 1    | Clutch boss         |
| 23      | 900 242-0504 0  | 2    | Screw 5x40                 | 77      | 150 126-0492 0  | 1    | Ignition coil       |
| 24      | 145 875-0632 0  | 1    | Plate                      | 78      | 156 110-0492 0  | 1    | Grommet             |
| 25      | 145 876-0136 0  | 1    | Muffler lid                | 79      | 900 242-0402 0  | 2    | Screw 4x20          |
| 26      | 145 621-0136 0  | 1    | Muffler cover              | 81      | 900 242-0401 2  | 2    | Screw 4x12          |
| 27      | 145 862-0632 0  | 1    | Screen (Option)            | 82      | 100 616-0136 0  | 1    | Cover               |
| 28      | 145 863-0632 0  | 1    | Screen holder (Option)     | 83      | 131 910-0306 0  | 1    | Bracket             |
| 29      | 900 242-0503 0  | 4    | Screw 5x30                 | 84      | 131 920-0793 0  | 1    | Cushion             |
| 30      | 100 213-0593 0  | 2    | Oil seal                   | 86      | 131 600-2213 0  | 1    | Cap ass'y fuel tank |
| 31      | 150 114-0492 0  | 1    | Grommet                    | 85      | -890 154-1513 0 | 1    | Decal, fuel mix     |
| 32      | 100 200-0136 1  | 1    | Crankcase set              | 87      | -131 314-0493 0 | 1    | Check valve         |
| 33      | -100 215-0393 0 | 4    | Knock pin                  | 89      | 131 010-0136 0  | 1    | Fuel tank           |
| 34      | 900 810-3620 0  | 2    | Ball bearing               | 90      | 131 205-0732 0  | 1    | Fuel strainer       |
| 35      | 100 100-0492 1  | 1    | Crankshaft ass'y           | 91      | 131 918-0136 0  | 1    | Bracket             |
| 36      | 100 142-0033 0  | 1    | Woodruff key               | 92      | 132 115-0492 0  | 1    | Grommet             |
| 37      | 100 242-0492 0  | 1    | Gasket, crankcase          | 93      | 132 010-0216 0  | 1    | Fuel pipe           |
| 38      | 156 114-0492 0  | 1    | Grommet                    | 94      | 890 115-0306 0  | 1    | Label, model        |
| 39      | 100 015-0463 0  | 2    | Circlip, piston pin        |         |                 |      |                     |
| 40      | 100 010-0216 0  | 1    | Piston                     |         |                 |      |                     |
| 41      | 100 013-0492 0  | 1    | Piston pin                 |         |                 |      |                     |
| 42      | 100 011-0216 0  | 1    | Piston ring                |         |                 |      |                     |
| 43      | 101 010-0492 0  | 1    | Gasket, cylinder base      |         |                 |      |                     |
| 44      | 101 034-0216 1  | 1    | Cylinder                   |         |                 |      |                     |
| 45      | 900 242-0602 0  | 2    | Screw 6x20                 |         |                 |      |                     |
| 46      | 900 242-0501 0  | 1    | Screw 5x10                 |         |                 |      |                     |
| 47      | 101 514-0136 0  | 1    | Cylinder cover             |         |                 |      |                     |
| 48      | 159 010-0033 0  | 1    | Spark plug BM6A            |         |                 |      |                     |
| 49      | 159 010-1013 0  | 1    | Spark plug BMR 6A (Option) |         |                 |      |                     |
| 50      | 159 011-0051 0  | 1    | Coil spring plug cap       |         |                 |      |                     |
| 51      |                 |      |                            |         |                 |      |                     |

Remarks:

\* Consists of 3 thru 9 and 13.  
32; includes 37  
63; includes 64  
86; includes 85 and 87



| Key No. | Part number     | Q'ty | Description          | Key No. | Part Number      | Q'ty | Description        |
|---------|-----------------|------|----------------------|---------|------------------|------|--------------------|
| 2- 1    | 900 242-0403 0  | 3    | Screw 4x30           | 2-63    | 351 907-1053 1   | 1    | Cushion            |
| 2       | 351 641-0136 0  | 1    | Plate                | 64      | 900 810-0620 0   | 2    | Bearing, ball 6200 |
| 3       | 351 610-0136 0  | 1    | Handle, front        | 65      | 610 302-0126 0   | 1    | Gear ass'y,        |
| 4       | 900 242-0401 2  | 17   | Screw 4x12           | 66      | -610 /307-0126 0 | 1    | Rod, connecting    |
| 5       | 351 605-0136 0  | 1    | Cushion              | 67      | --610 327-0126 0 | 1    | Bearing, needle    |
| 6       | 900 242-0400 8  | 3    | Screw 4x8            | 68      | 900 500-0000 6   | 2    | Nut 6              |
| 7       | 351 613-0136 1  | 1    | Supporter, f. handle | 69      | 900 605-0000 6   | 2    | Washer, spring 6   |
| 8       | 900 242-0401 0  | 2    | Screw 4x10           | 70      | 900 600-0000 6   | 2    | Washer 6           |
| 9       | 351 105-0136 0  | 1    | Cushion              | 71      | 610 440-0126 0   | 1    | Guide              |
| 10      | 351 126-0136 0  | 1    | Plate                | 72      | 610 441-0206 0   | 1    | Guide              |
| 13      | 163 400-0216 0  | 1    | Switch, ignition     | 73      | 900 162-0501 4   | 2    | Bolt, h. s. 5x14   |
| 14      | 890 157-1113 0  | 1    | Label, stop          | 74      | 699 118-0126 1   | 4    | Washer             |
| 15      | 900 340-5003 2  | 1    | Pin, Spring 5x32     | 75      | 900 242-0401 4   | 7    | Screw 4x14         |
| 16      | 900 340-4001 6  | 1    | Pin, spring 4x16     | 76      | 351 135-1053 0   | 1    | Spacer             |
| 17      | 900 340-3001 4  | 1    | Pin, spring 3x14     |         |                  |      |                    |
| 18      | 351 111-0136 0  | 1    | Grip, rear handle    |         |                  |      |                    |
| 20      | 178 011-0136 0  | 1    | Rod, throttle        |         |                  |      |                    |
| 21      | 178 010-0136 0  | 1    | Control, throttle    |         |                  |      |                    |
| 22      | 178 091-0136 0  | 1    | Spring               |         |                  |      |                    |
| 23      | 178 090-0136 0  | 1    | Lockout, t. control  |         |                  |      |                    |
| 24      | 351 110-0306 0  | 1    | Handle, rear         |         |                  |      |                    |
| 25      | 351 129-0306 0  | 1    | Handle, rear         |         |                  |      |                    |
| 26      | 175 005-0126 1  | 1    | Drum, clutch         |         |                  |      |                    |
| 27      | 900 100-0800 8  | 1    | Bolt 8x8             |         |                  |      |                    |
| 28      | 610 410-0306 0  | 1    | Housing, gear        |         |                  |      |                    |
| 33      | -100 215-0393 0 | 2    | Knock pin.           |         |                  |      |                    |
| 29      | 162 010-0136 0  | 1    | Lead                 |         |                  |      |                    |
| 31      | 900 802-0600 3  | 2    | Bearing, ball 6003   |         |                  |      |                    |
| 32      | 900 702-0003 5  | 1    | Circlip 35           |         |                  |      |                    |
| 37      | 610 426-0126 0  | 1    | Felt                 |         |                  |      |                    |
| 39      | 900 242-0402 2  | 4    | Screw 4x22           |         |                  |      |                    |
| 40      | 351 607-0136 0  | 2    | Cushion              |         |                  |      |                    |
| 42      | 900 701-0001 6  | 1    | Circlip 16           |         |                  |      |                    |
| 43      | 699 110-0306 0  | 1    | Bar, frame           |         |                  |      |                    |
| 44      | 697 000-0306 0  | 1    | Cutter set           |         |                  |      |                    |
|         | -697 010-0306 0 | 1    | Cutter, upper.       |         |                  |      |                    |
|         | -697 011-0306 0 | 1    | Cutter, lower.       |         |                  |      |                    |
| 46      | 145 710-0023 0  | 4    | Nut 6                |         |                  |      |                    |
| 48      | 699 115-0206 2  | 4    | Bolt                 |         |                  |      |                    |
| 49      | 351 805-0136 0  | 1    | Guard, hand          |         |                  |      |                    |
| 50      | 900 242-0501 2  | 2    | Screw 5x12           |         |                  |      |                    |
| 52      | 610 414-0126 0  | 1    | Gasket, gear housing |         |                  |      |                    |
| 54      | 610 411-0206 0  | 1    | Lid, gear housing    |         |                  |      |                    |
| 58      | 895 410-0793 0  | 1    | Wrench, w/s. driver  |         |                  |      |                    |
| 59      | 880 300-0126 0  | 1    | Pump, grease         |         |                  |      |                    |
| 61      | 351 833-0306 0  | 1    | Plate                |         |                  |      |                    |
| 62      | 351 107-1053 1  | 1    | Cushion              |         |                  |      |                    |



| Key No. | Part Number     | Q'ty | Description               | Key No. | Part Number     | Q'ty | Description        |
|---------|-----------------|------|---------------------------|---------|-----------------|------|--------------------|
| 3       | 123 000-0136 0  | 1    | Carburetor ass'y (WA 89)  | 3-20    | -123 113-0393 0 | 1    | Spring, throttle   |
| 1       | -123 130-0296 0 | 5    | Screw                     | 21      | -123 116-0653 0 | 1    | Valve, throttle    |
| 2       | -123 142-0393 0 | 1    | Cover, metering diaphragm | 22      | -123 114-0393 0 | 1    | Screw, throttle    |
| 3       | -123 141-0393 0 | 1    | Diaphragm metering        | 23      | -123 126-0393 0 | 1    | Screen, inlet      |
| 4       | -123 140-0393 0 | 1    | Gasket, m. diaphragm      | 24      | -123 112-0393 0 | 1    | Diaphragm fuel pu  |
| 5       | -123 167-0523 0 | 1    | Screw circuit plate       | 25      | -123 125-0393 0 | 1    | Gasket, fuel pump  |
| 6       | -123 166-0393 0 | 1    | plate, circuit            | 26      | -123 124-0136 0 | 1    | Cover, fuel pump   |
| 7       | -123 165-0393 0 | 1    | Diaphragm, circuit plate  | 27      | -123 110-0393 0 | 1    | Screw pump cover   |
| 8       | -123 164-0393 0 | 1    | Gasket, circuit plate     | 28      | -123 134-0632 0 | 1    | Screw, idle adjust |
| 9       | -123 123-0393 0 | 1    | Lever, metering           | 29      | -123 133-0632 0 | 1    | Spring, idle screw |
| 10      | -123 138-0393 0 | 1    | Pin, metering lever       | 30      | -Not Available  | 1    | Body ass'y         |
| 11      | -123 139-0393 0 | 1    | Screw, metering lever pin |         |                 |      |                    |
| 12      | -123 122-0653 0 | 1    | Spring, metering lever    |         |                 |      |                    |
| 13      | -123 137-0393 0 | 1    | Valve, inlet needle       |         |                 |      |                    |
| 14      | -123 119-0393 0 | 1    | Spring, H. S. needle      |         |                 |      |                    |
| 15      | -123 120-0653 0 | 1    | Needle, high speed        |         |                 |      |                    |
| 16      | -123 121-0393 0 | 1    | Spring, idle needle       |         |                 |      |                    |
| 17      | -123 118-0653 0 | 1    | Needle, idle              |         |                 |      |                    |
| 18      | -123 127-0393 0 | 1    | Clip, throttle shaft      |         |                 |      |                    |
| 19      | -123 117-0136 0 | 1    | Shaft, throttle           |         |                 |      |                    |

| Part Number    | Description          | Key                 |
|----------------|----------------------|---------------------|
| 123 103-0393 0 | Diaphragm/gasket kit | 3, 4, 7,            |
| 123 102-0652 0 | Repair Kit           | 3, 4, 5,<br>12, 13, |

Remarks:  
\* Consists of 1 thru 30.