



BSW200DC

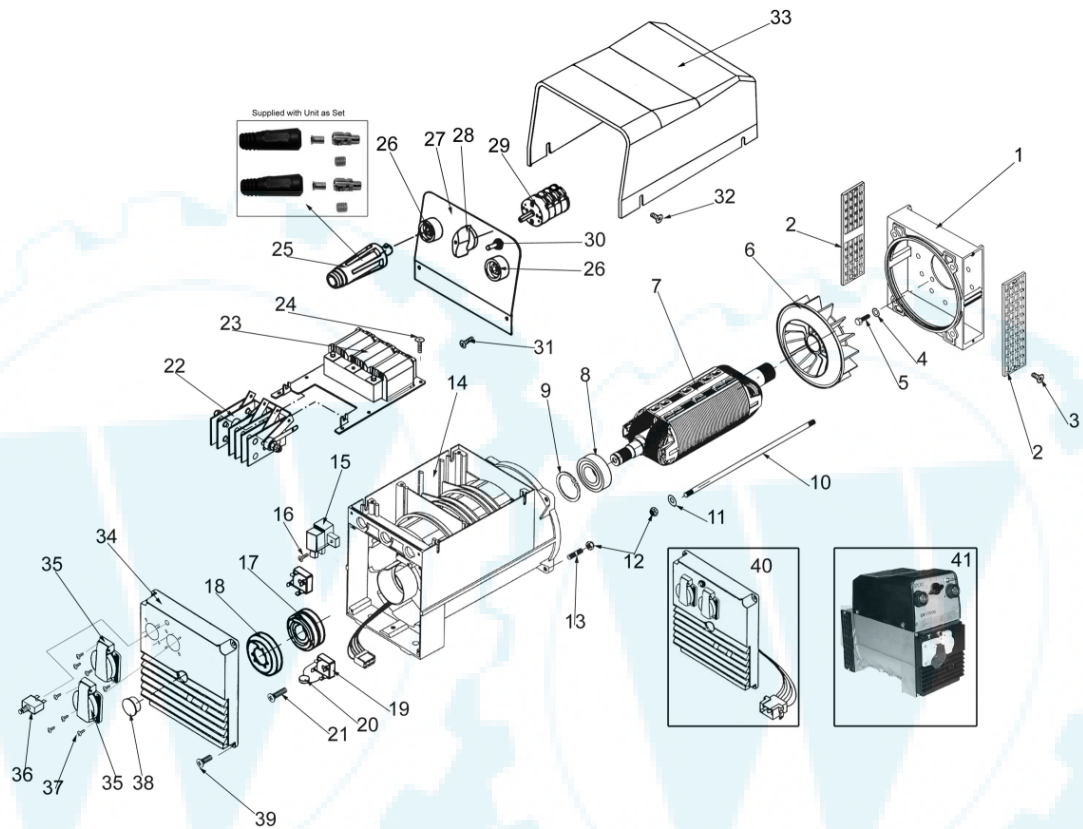
PARTS LIST



Model No. HPP1613-0 BSW200DC
Manual No. 102381GS Rev 0



Alternator with Outlet Panel



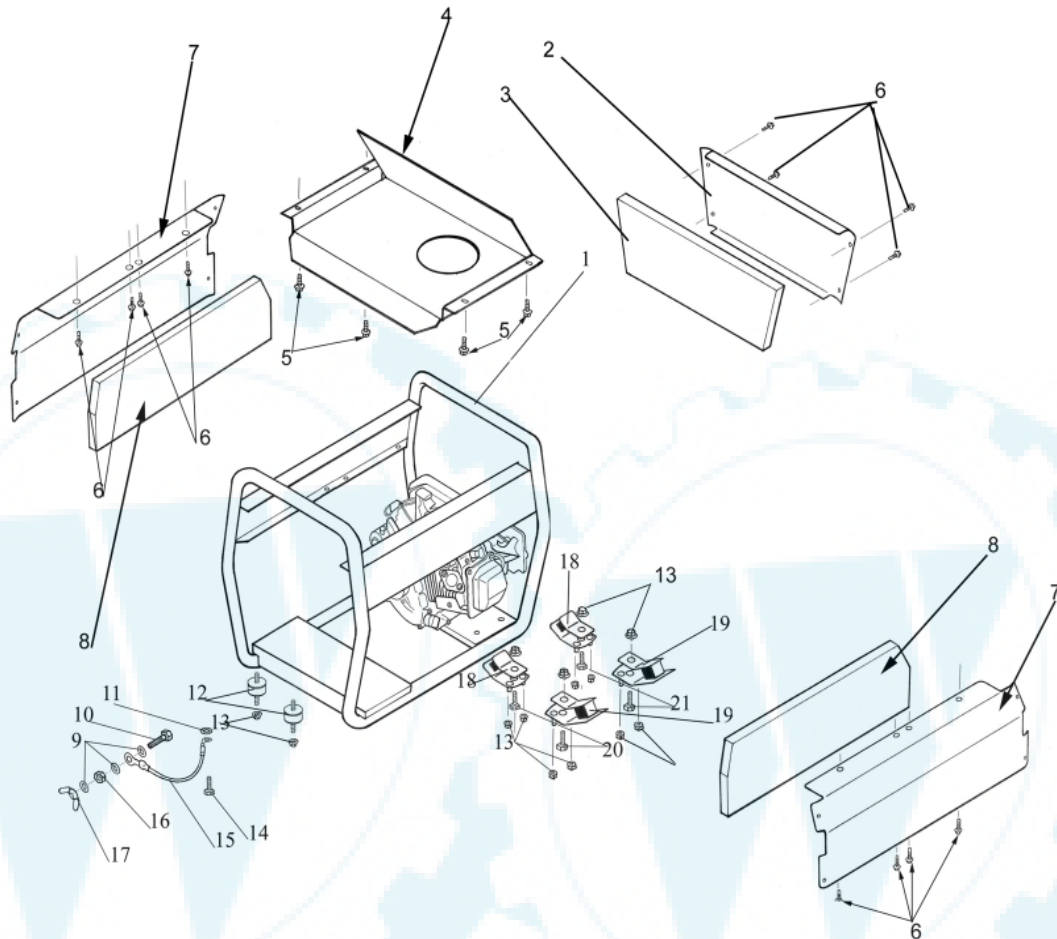


Alternator with Outlet Panel

ITEM	PART ID	PART DESCRIPTION	QTY
1	102271GS	FLANGE PLATE	1
2	102139GS	SIDE GRILL (PLASTIC)	2
3	102087GS	SCREW MC PPHD M5*10MM	4
4	102099GS	WASHER LOCK M10/ 3/8 OXY BLACK	4
5	102279GS	SCREW CAP 3/8 UNC * 1 1/4"	4
6	102280GS	ROTOR FAN	1
7	102278GS	ROTOR EW DC WELDER	1
8	102283GS	BEARING ASSY SINCRO	1
9	102284GS	BEARING CIRCLIP	1
10	102285GS	ROTOR BOLT 325MM	1
11	102020GS	WASHER FLAT M8 & 5/16"	1
12	102017GS	NUT NYLOCK M8-1.25 TYPE T	5
13	102131GS	STUD M8*30MM	4
14	102366GS	STATOR EWDC WELDER	1
15	102367GS	BRUSH HOLDER & BRUSH	1
16	102241GS	SCREW MACHINE M4-0.7*12MM	1
17	102242GS	SLIP RING ASSEMBLY	1
18	102243GS	SLIP RING COVER	1
19	102161GS	BRIDGE RECTIFIER	1
20	102368GS	VARISTOR	1
21	102291GS	SCREW MACHINE	1
22	102369GS	WELDING BRIDGE RECTIFIER	1
23	102370GS	WELDING IMPEDANCE	1
24	102236GS	SCREW MC PPHD M6*10MM	6
25	102371GS	MALE CONNECTOR	2
26	102372GS	FEMALE CONNECTOR	2
27	102373GS	PANEL ALUMINIUM BLANK	1
28	102374GS	KNOB SWITCH 2 POSITION	1
29	102375GS	SWITCH 2 WELD/GEN EW200AC/DC	1
30	102376GS	SWITCH CHANGEOVER	2
31	102292GS	SCREW MACHINE M5*8MM	2
32	102235GS	SCREW MACHINE PPHD M6-1.0X12MM	4
33	102287GS	COVER TOP BOX	1
34	102075GS	OUTLET PANEL BLANK	1
35	102030GS	SOCKET OUTLET	2
36	102133GS	CIRCUIT BREAKER 15A	1
37	102040GS	SCREW PLASTITE PPHD NO6 * 3/8"	8
38	102085GS	END CAP PLASTIC (OUTLET PANEL)	1
39	102087GS	SCREW MC PPHD M5*10MM	4
40	102263GS	OUTLET PANEL COMPLETE	1
41	102377GS	ALTERNATOR WELDER EW200DC	1



Frame Mounts and EPA



ITEM	PART ID	PART DESCRIPTION	QTY
1	102297GS	CRADLE RED	1
2	102298GS	PANEL ACOUSTIC (END PANEL)	1
3	102299GS	ACOUSTIC FOAM 25MM (FOR PANEL BA04)	1
4	102300GS	HEATSHIELD 7500L	1
5	102165GS	SCREW SELF TAP 5.5*1.8*13MM	4
6	102166GS	SCREW SELF DRILL #8*12.7 PPHD	12
7	102301GS	PANEL ACOUSTIC	2
8	102302GS	ACOUSTIC FOAM 25MM SELF ADHESIVE (FOR AK13 PANEL)	2
9	102021GS	WASHER SHAKEPROOF 1/4" & M6 INT	3
10	102037GS	SCREW SET M6-1.0X25MM PLATED	1
11	102024GS	WASHER SHAKEPROOF M8 INT	1
12	102034GS	VIBRATION MOUNT 32MM DIAMETER	2
13	102029GS	NUT FLANGE M8-1.25	16
14	102117GS	SCREW SET M6*25MM	1
15	102378GS	LEAD EARTH ASSY 145MM	1
16	102028GS	NUT FULL M6-1.0	1
17	102036GS	NUT WING M6-1.0	1
18	102033GS	VIBRATION MOUNT 45 DEGREE SOFT	2
19	102031GS	VIBRATION MOUNT 45 DEGREE HARD	2
20	102264GS	BOLT M8-1.25 X40	2
21	102026GS	SCREW SET	2

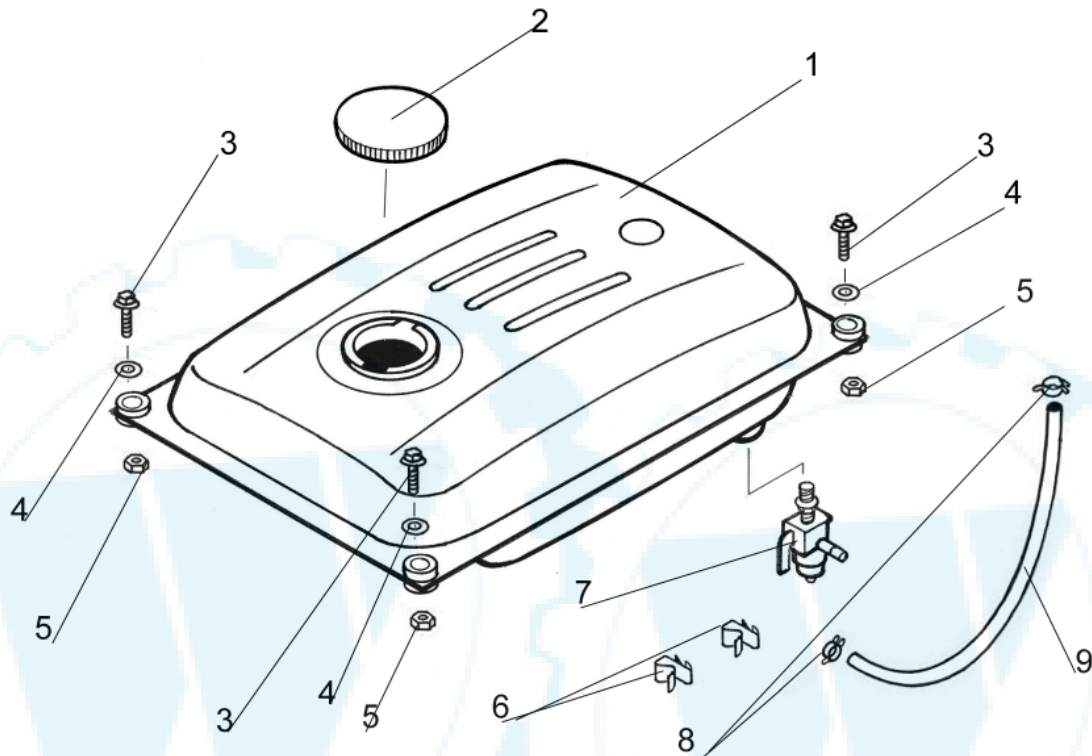
Model No. HPP1613-0

PAGE 4 OF 8

Ihr Ersatzteilspezialist im Internet



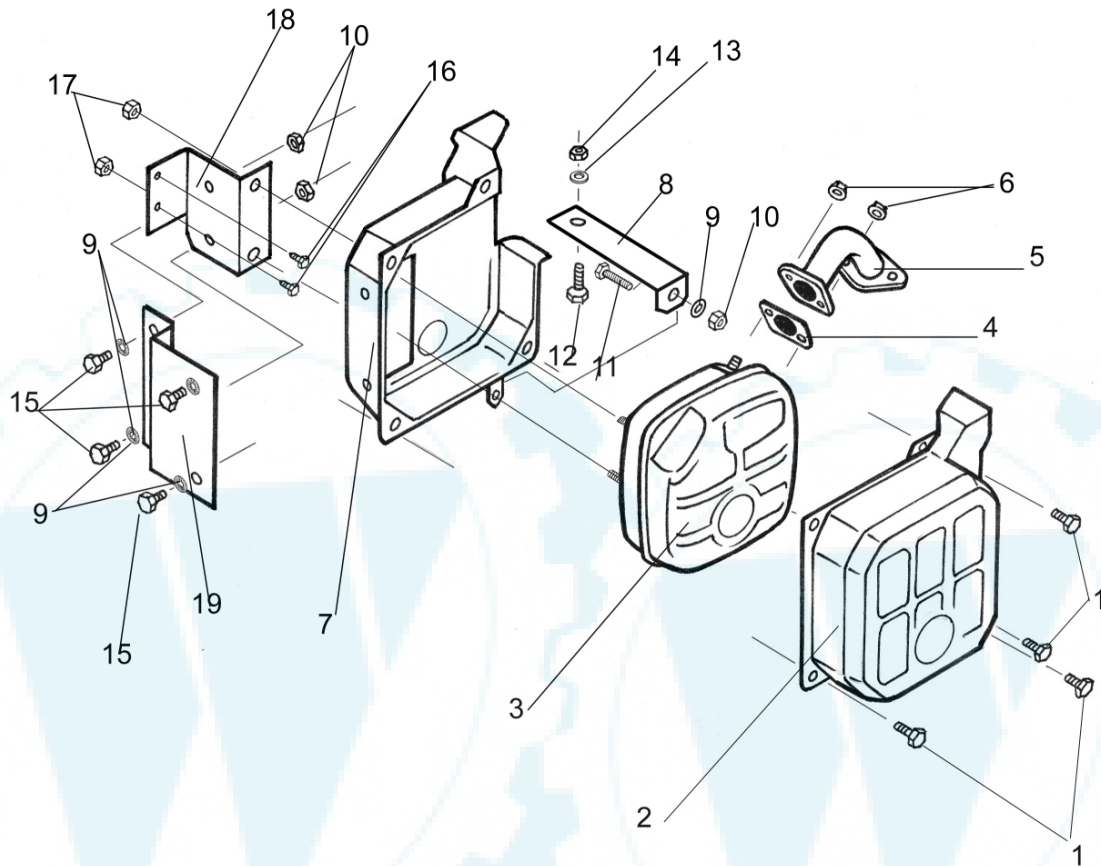
Fuel Tank



ITEM	PART ID	PART DESCRIPTION	QTY
1	102044GS	TANK FUEL METAL	1
2	102090GS	FUEL CAP	1
3	102037GS	SCREW SET M6-1.0X25MM PLATED	4
4	102042GS	WASHER REPAIR 6X20 OXY BLACK	4
5	102032GS	NUT LOCKING FLANGE M6-1.0MM	4
6	102319GS	CLIP 13MM HOSE	2
7	102045GS	VALVE FUEL	1
8	102047GS	CLAMP HOSE 1/4" ID	2
9	102025GS	HOSE FUEL	1



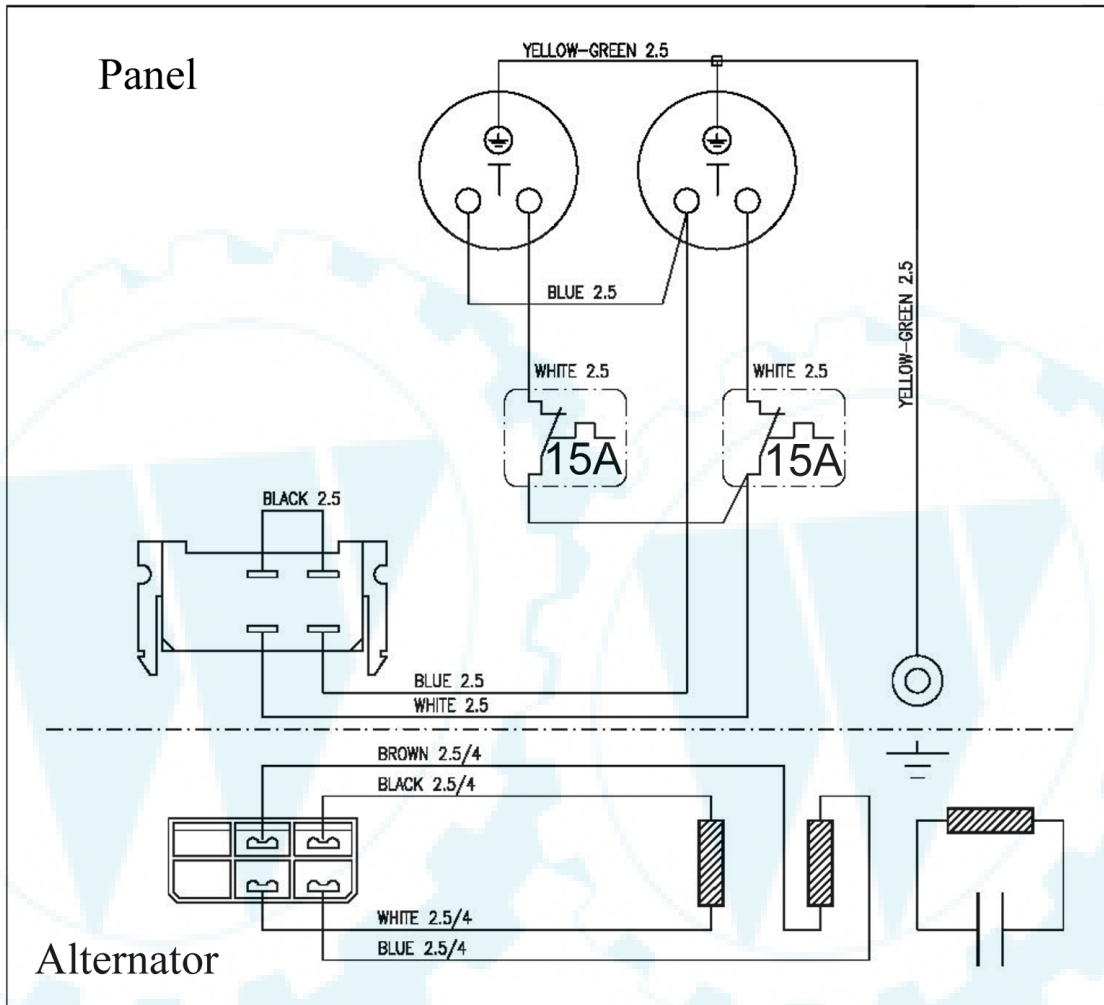
Exhaust & Fittings



ITEM	PART ID	PART DESCRIPTION	QTY
1	710074	SCREW M6	4
2	710791	GUARD MUFFLER	1
3	102398GS	MUFFLER	1
4	102304GS	GASKET	1
5	102305GS	MANIFOLD	1
6	102306GS	NUT FLANGE M8	8
7	710792	GUARD MUFFLER	1
8	102307GS	BRACKET EXHAUST GUARD MOUNTING	1
9	102021GS	WASHER SHAKEPROOF 1/4"	5
10	102028GS	NUT FULL M6	3
11	102037GS	SCREW M6	1
12	102308GS	SCREW M8	1
13	102020GS	WASHER FLAT M8	1
14	102017GS	NUT NYLOCK M8	1
15	102309GS	SCREW M5	4
16	102166GS	SCREW SELF DRILL	2
17	102029GS	NUT M8	2
18	102310GS	BRACKET EXHAUST MOUNTING	1
19	102311GS	BRACKET EXHAUST GUARD MOUNTING	1



Panel Wiring Diagram



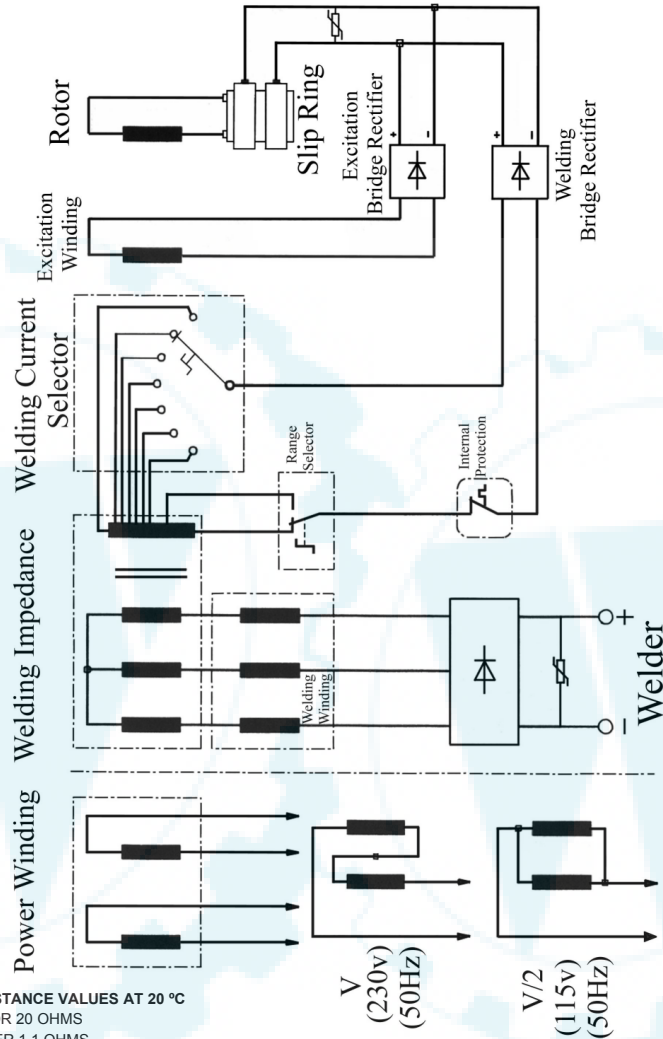
RESISTANCE VALUES AT 20 °C
ROTOR 20 OHMS
POWER 1.1 OHMS
WELDER 0.002 OHMS
EXCITATION 0.71 OHMS

WELDING IMPEDANCE
PRIMARY 14 OHMS
SECONDARY 1.68 OHMS



Panel Wiring Diagram

EW 200 DC Welder Generator



RESISTANCE VALUES AT 20 °C
 ROTOR 20 OHMS
 POWER 1.1 OHMS
 WELDER 0.002 OHMS
 EXCITATION 0.71 OHMS

WELDING IMPEDANCE
 PRIMARY 14 OHMS
 SECONDARY 1.68 OHMS

Decal & Manual Items *Not Shown

PART ID	PART DESCRIPTION	QTY
102077GS	DECAL WARNING READ MANUAL	1
102048GS	DECAL GND	1
102076GS	DECAL ELECTRICAL HAZARD	1
102041GS	DECAL CAUTION HOT	1
102379GS	DECAL BSW200 B&S 650X90MM	2
102380GS	DECAL DC YELLOW TRIANGLE	1
102065GS	MANUAL OWNERS	1

Model No. HPP1613-0

PAGE 8 OF 8