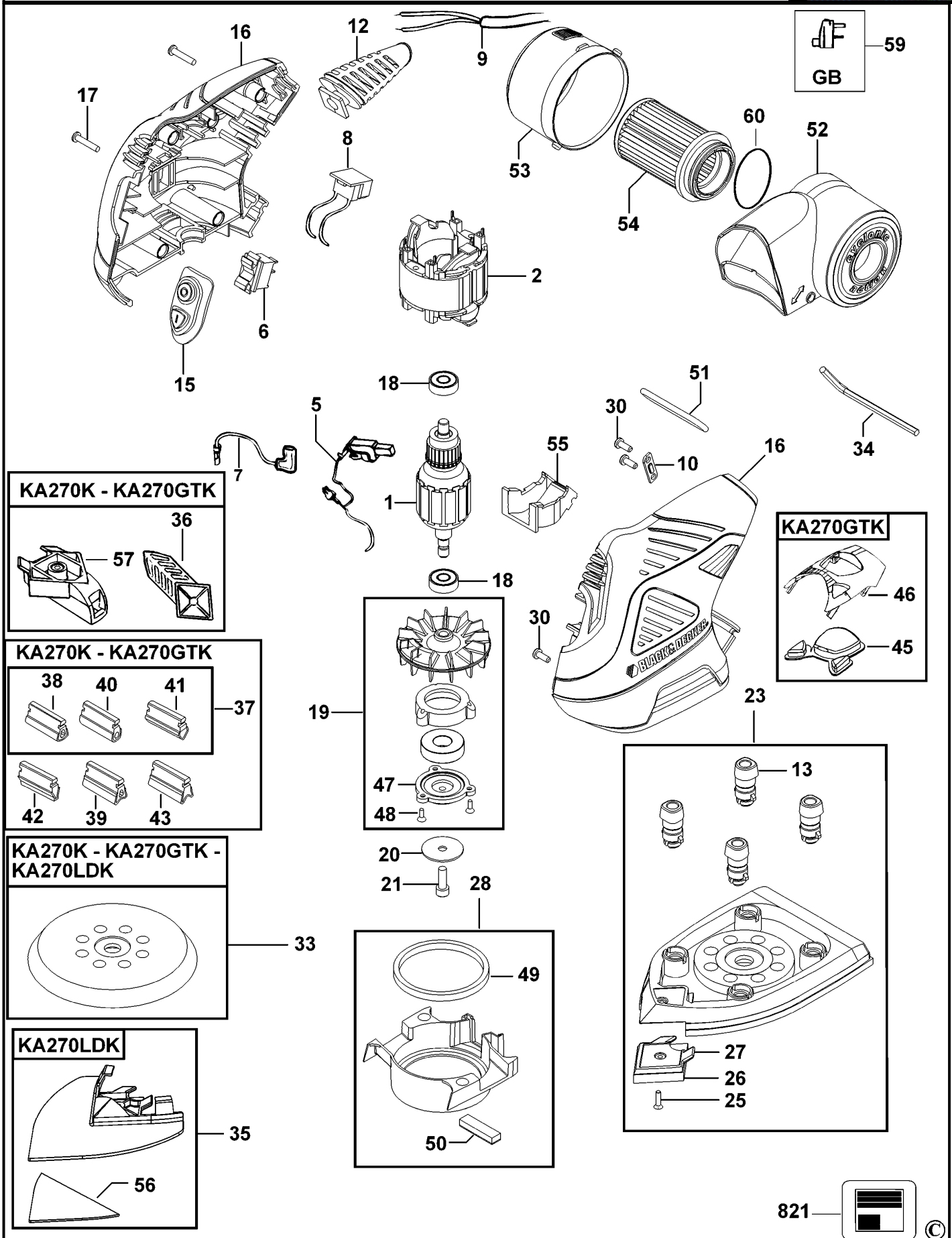


# EXZENTERSCHLEIFER

# KA270K----A

## TYPE 1



821



©

# EXZENTERSCHLEIFER

# KA270K----A

## TYPE 1



| Pos. Nr     | Ersatzteilnummer | Beschreibung | Preis              | Variants |                   |
|-------------|------------------|--------------|--------------------|----------|-------------------|
| 1           | 1                | 576373-38    | ANKER ZSB          |          |                   |
| 2           | 1                | 576374-20    | FELD 230V          |          |                   |
| 5           | 2                | 584751-00    | KOHLE + HALTER ZSB |          |                   |
| 6           | 1                | 579050-00    | SCHALTER           |          |                   |
| 7           | 1                | 581389-00    | WELLE ZSB          |          |                   |
| 8           | 1                | 579210-01    | PCB ZSB            |          |                   |
| 9           | 1                | 330120-11    | KABELSATZ (EURO)   | ZA       |                   |
| 9           | 1                | 330120-11    | KABELSATZ (EURO)   | QS       |                   |
| 9           | 1                | 330120-11    | KABELSATZ (EURO)   | GB       | See item 59       |
| 9           | 1                | 330120-43    | KABELSATZ          | XE       |                   |
| 10          | 1                | 329301-00    | KABELKLEMME        |          |                   |
| 12          | 1                | 477596-00    | KABELTUELLE        |          |                   |
| 13          | 4                | 807224-01    | BEIN               |          |                   |
| 15          | 1                | 489522-00    | SCHALTERABDECKUNG  |          |                   |
| 16          | 1                | 477307-03    | GEHAEUSE           | GB       | KA270K - KA270LDK |
| 16          | 1                | 477307-03    | GEHAEUSE           | QS       | KA270K - KA270LDK |
| 16          | 1                | 477307-01    | GEHAEUSE           | GB       | KA270GTK          |
| 16          | 1                | 477307-01    | GEHAEUSE           | QS       | KA270GTK          |
| 17          | 5                | 747329       | SCHRAUBE           |          |                   |
| 18          | 2                | 574853-06    | KUGELLAGER         |          |                   |
| 19          | 1                | 477744-00    | LUEFTER ZSB        |          |                   |
| 20          | 1                | 586405-00    | SCHEIBE ZSB        |          |                   |
| 21          | 1                | 797190       | SCHRAUBE (VORL.)   |          |                   |
| 23          | 1                | 477606-00    | PLATTE             |          |                   |
| 25          | 1                | 571081-00    | SCHRAUBE           | GB       |                   |
| 25          | 1                | 571081-00    | SCHRAUBE           | QS       |                   |
| 26          | 1                | 807945       | SPITZE             |          |                   |
| 27          | 1                | 582097-00    | CARRIER            |          |                   |
| 28          | 1                | 479221-00    | RADKRANZ,LI+RE     |          |                   |
| KOMPL.ES55E |                  |              |                    |          |                   |
| 30          | 4                | 370748-00    | SCHRAUBE           |          |                   |
| 33          | 1                | 581103-00    | PLATTE             |          |                   |
| 34          | 1                | 807043       | SCHLUESSEL         |          |                   |
| 35          | 1                | 491420-00    | PLATTE ZSB         |          | KA270LDK          |
| 36          | 1                | 582146-00    | FINGER             |          |                   |
| 37          | 1                | 579114-01    | PROFIL             |          |                   |
| 38          | 1                | 579115-00    | PROFIL             |          |                   |
| 39          | 1                | 579116-00    | PROFIL             |          |                   |
| 40          | 1                | 579117-00    | PROFIL             |          |                   |
| 41          | 1                | 579118-00    | PROFIL             |          |                   |
| 42          | 1                | 579119-00    | PROFIL             |          |                   |
| 43          | 1                | 579120-00    | PROFIL             |          |                   |
| 45          | 1                | 477587-00    | PLATTE             |          | KA270GTK          |
| 46          | 1                | 478566-00    | PLATTE             |          | KA270GTK          |
| 47          | 1                | 477685-00    | LAGERABDECKUNG     |          |                   |
| 48          | 3                | 571081-02    | SCHRAUBE           |          |                   |
| 49          | 1                | 478261-00    | DICHTUNG           |          |                   |
| 50          | 1                | 478641-00    | PLATTE             |          |                   |
| 51          | 1                | 479526-00    | O-RING             |          |                   |
| 52          | 1                | 477602-00    | DECKEL             |          |                   |
| 53          | 1                | 477601-00    | TANK               |          |                   |
| 54          | 1                | 479535-00    | FILTER ZSB         |          |                   |
| 55          | 1                | 478784-00    | DEFLEKTOR          |          |                   |
| 56          | 1                | 371932       | BEFESTIGER         |          | KA270LDK          |
| 57          | 1                | 582098-00    | HALTER             |          |                   |
| 58          | 1                | 488333-00    | SCHILD             |          |                   |
| 59          | 1                | 588384-00    | ADAPTER ZSB        | GB       |                   |
| 60          | 1                | 479525-00    | O-RING             |          |                   |

# EXZENTERSCHLEIFER KA270K----A

## TYPE 1



|     |   |           |           |    |
|-----|---|-----------|-----------|----|
| 821 | 1 | 477599-01 | AUFKLEBER | GB |
| 821 | 1 | 477599-01 | AUFKLEBER | QS |