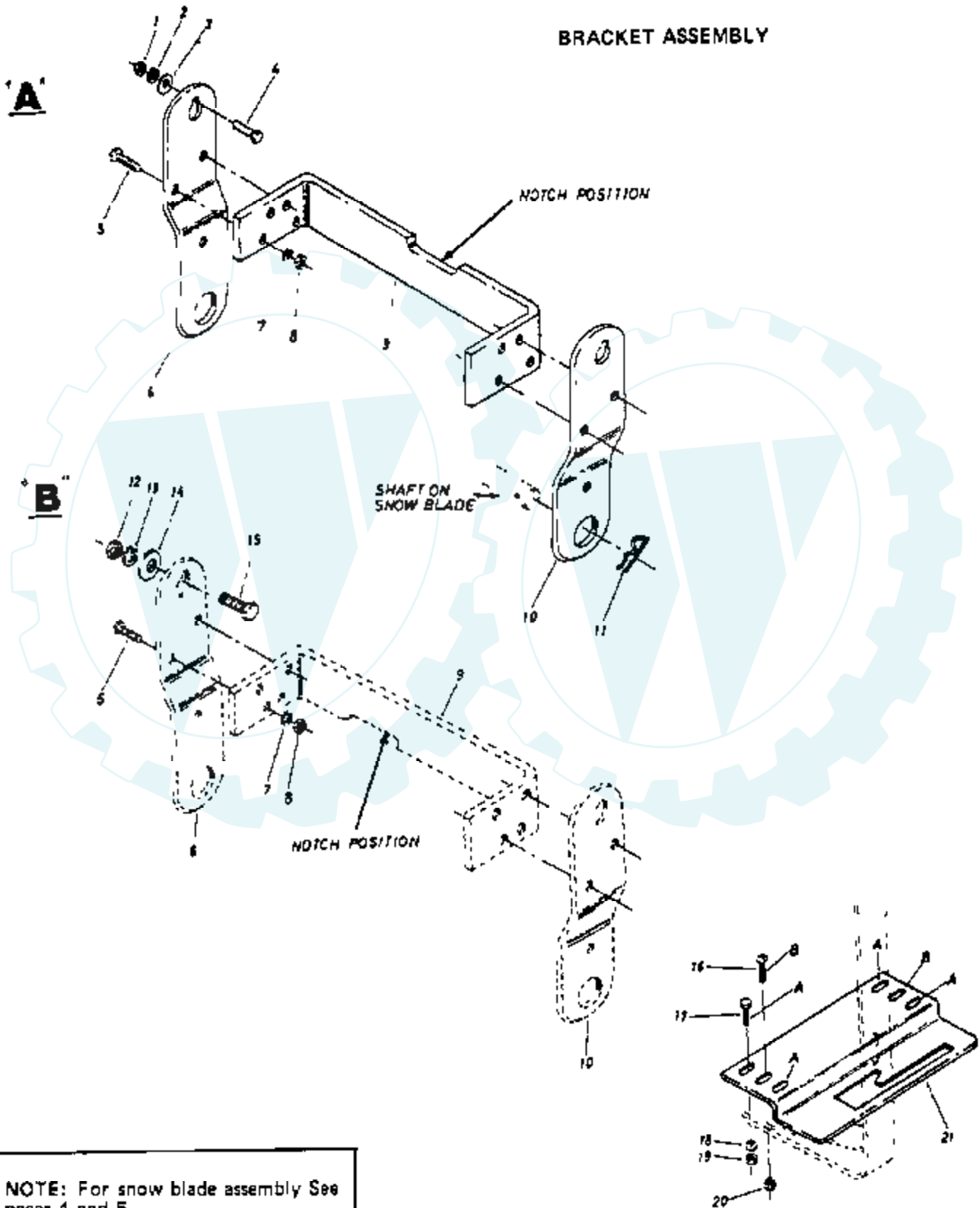


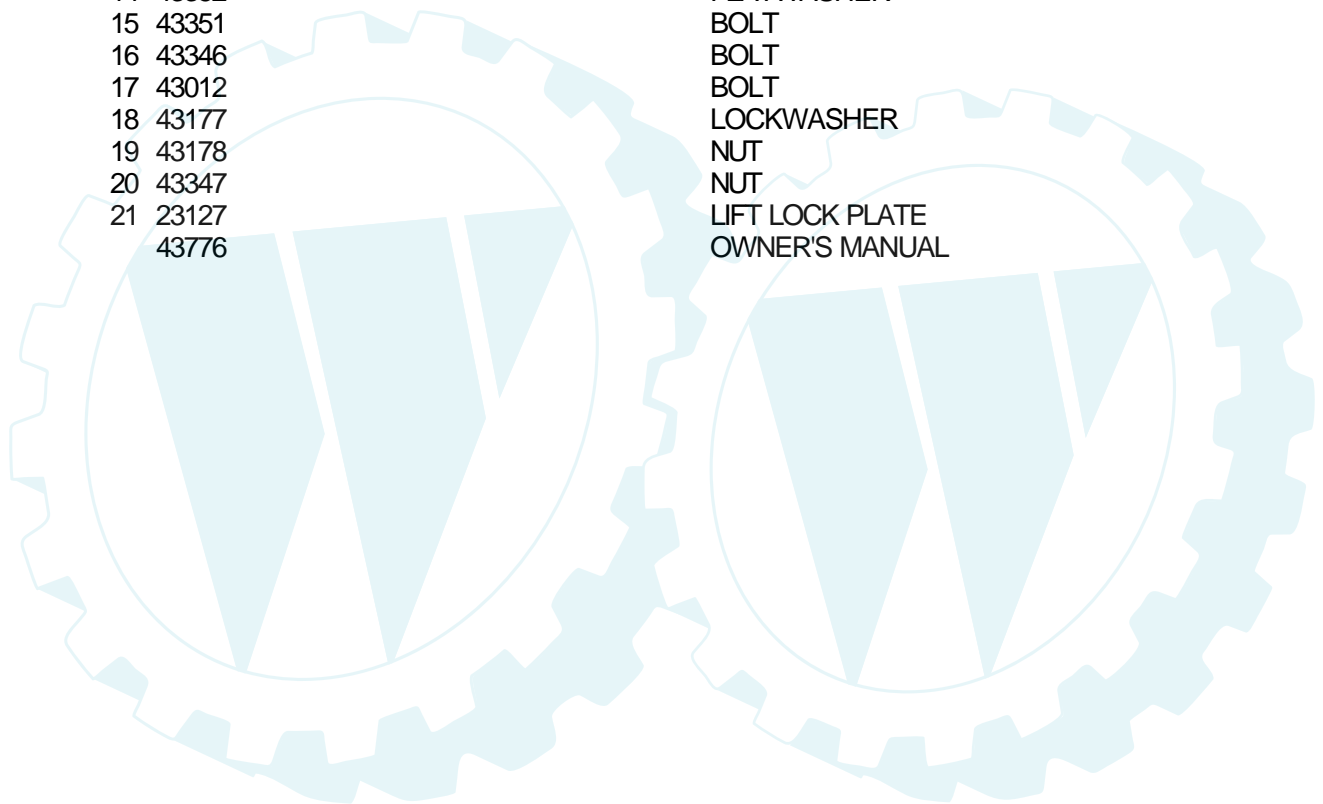
42" Snow Blade Model No. LR010AR

BRACKET ASSEMBLY



NOTE: For snow blade assembly See pages 4 and 5

Ref #	Part Number	Qty	Description
1	43082		LOCKNUT
2	43003		WASHER
3	43070		WASHER
4	43001		BOLT
5	43063		BOLT
6	23141		MOUNTING BRKT
7	43086		WASHER
8	43064		NUT
9	23143		CROSS TIE BRKT
10	23142		MOUNTING BRKT
11	43343		HAIR PIN COTTER
12	43262		NUT
13	43353		LOCKWASHER
14	43352		FLATWASHER
15	43351		BOLT
16	43346		BOLT
17	43012		BOLT
18	43177		LOCKWASHER
19	43178		NUT
20	43347		NUT
21	23127		LIFT LOCK PLATE
	43776		OWNER'S MANUAL



SUPPLEMENT SHEET

Form No 44381 (10/88)

DATE October 1, 1988

SUBJECT Revisions on pages

12 and 13 42" Snow Blade

Attachment LR010BR

USE THIS SUPPLEMENT SHEET INSTEAD OF YOUR OWNER'S MANUAL, FOR PAGES 12 AND 13, LINE 3 ON PAGE 9.

Replace line 3 on page 9 of the LR010AR snow blade owner's manual with the following:

- 3 Remove eyebolt from right hand side of tractor. Use caution when loosening eyebolt as there is some spring tension. Discard eyebolt and hardware. Assemble left hand mounting bracket (B) to left side of lawn tractor frame using one 1/2" x 1.25" hex head bolt (E), one 1/2" flatwasher (F), one 1/2" lockwasher (G), and one 1/2" hex lock nut (H). Assemble one 3/8" hex lock nut (L) and one 1/2" flatwasher (F) to eyebolt (M). Hook eyebolt (M) to spring and assemble through the right hand side of lawn tractor frame and right hand mounting bracket. Assemble one 1/2" flatwasher (F), one 1/2" lockwasher (G), and one 3/8" hex lock nut (L). See Figures 6, 15, 15A (Below), 16, and parts drawing "B" on page 12 of this supplement sheet. **DO NOT TIGHTEN.**

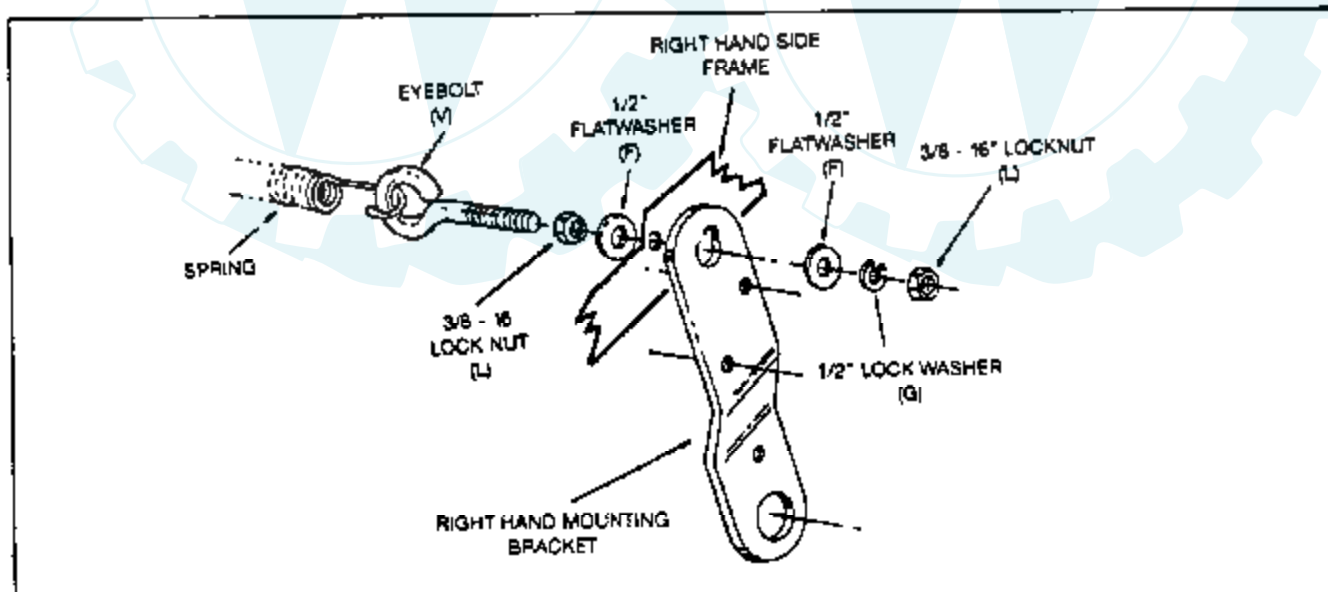


FIGURE 15A

ROPER

OUTDOOR POWER PRODUCTS
DIVISION OF ROPER CORPORATION

Ref #	Part Number	Qty	Description
-------	-------------	-----	-------------

REFER TO IMAGE

