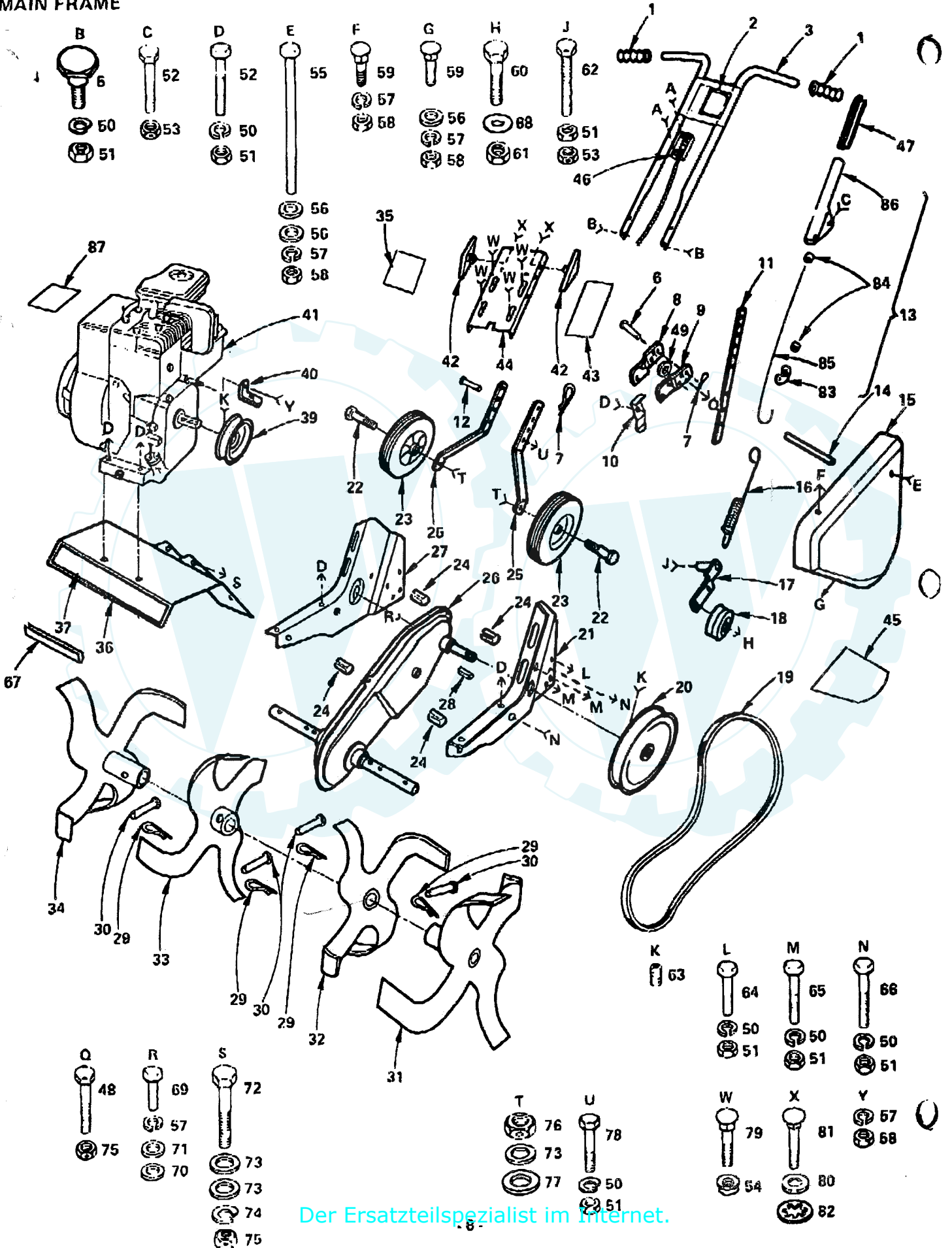


MAIN FRAME



MAIN FRAME

KEY NO.	PART NO.	DESCRIPTION	KEY NO.	PART NO.	DESCRIPTION
1	9266R	Handle Grip	47	8206H	Handle Grip
2	928J	Decal - Roper	48	3342P	Hex Bolt 3/8 - 24 x 1 - 1/4 Gr. 5
3	674A6B	Handle Weldment	49	635J	Washer
4	5535P	Screw, Slotted Pan Hd. Tap Type 1, No. 10 - 24 x 5/8	50	1003P	*Lockwasher 5/16
5	471J	Bolt, Hex Hd. Shoulder 5/16 x 3/4	51	604P	*Hex Nut 5/16 - 18
6	326J	Drilled Rivet	52	3013P	*Hex Bolt 5/16 - 18 x 1 - 1/2
7	4921H	Retainer Spring	53	1685H	Gripco Centerlock Nut 5/16 - 18
8	1952J	Stake Support - R.H.	54	571P	Flanged Nut 5/16 - 18
9	1951J	Stake Support - L.H.	55	3338P	Hex Bolt 1/4 - 20 x 5
10	326J	Stake Spring	56	1506P	*Washer 9/32 x 5/8 x 16 Ga.
11	9554R	Depth Stake	57	1002P	*Lockwasher 1/4
12	9194R	Drilled Rivet	58	503P	*Hex Nut 1/4 - 20
13	674A71	Clutch Control Assembly (Inc. Key No's. 83, 84, 85 and 86)	59	10P	*Sq. Neck Carriage Bolt 1/4 - 20 x 1/2
14	9271R	Split Spacer	60	3026P	*Hex Bolt 3/8 - 16 x 1 - 3/8
15	9054R	Belt Guard	61	608P	*Hex Jam Nut 3/8 - 16
16	9241R	Spring	62	3343P	Hex Bolt 5/16 - 18 x 2 Full Thd.
17	674A30	Idler Arm Weldment	63	4537P	Hex Forged Socket Headless Set Screw C.P. 5/16 - 18 x 3/8
18	310J	Idler Pulley	64	3010P	*Hex Bolt 5/16 - 18 x 3/4
19	9180R	V-Belt	65	3012P	*Hex Bolt 5/16 - 18 x 1 - 1/4
20	9175R	Transmission Sheave	66	3353P	*Hex Bolt 5/16 - 18 x 2 - 1/2
21	1948J	Engine Bracket - L.H.	67	1084J	Vinyl Guard Strip
22	4898H	Shoulder Bolt	68	1513P	Washer 13/32 x 13/16 x 16 Ga.
23	9187R	Wheel	69	3345P	Hex Bolt 1/4 - 28 x 3/4 Gr. 5
24	9173R	Split Spacer	70	1584P	Washer 9/32 x 7/8 x 12 Ga.
25	9190R	Wheel Bracket	71	1685P	Washer 9/32 x 1 - 1/4 x 16 Ga.
26	674A21	Transmission	72	3347P	*Hex Bolt 3/8 - 24 x 3 Gr. 5
27	1949J	Engine Bracket - R.H.	73	1557P	*Washer 13/32 x 13/16 x 11 Ga.
28	2649M	Square Key	74	1004P	*Lockwasher 3/8
29	3146R	Retainer Spring	75	7810H	Gripco Nut 3/8 - 24
30	4929H	Drilled Pan Hd. Rivet	76	514P	Nylock Nut 3/8 - 16
31	674A40	Tine Weldment Outer - L.H.	77	1545P	*Washer 17/32 x 1 x 16 Ga.
32	674A38	Tine Weldment Inner - L.H.	78	3011P	*Hex Bolt 5/16 - 18 x 1
33	674A39	Tine Weldment Inner - R.H.	79	16P	*Sq. Neck Carriage Bolt 5/16 - 18 x 3/4
34	674A41	Tine Weldment Outer - R.H.	80	1511P	Washer 3/8 x 7/8 x 14 Ga.
35	1167J	Decal - 5	81	62P	*Sq. Neck Carriage Bolt Sht. Shoulder 5/16 - 18 x 1 - 1/4
36	9056R	Tine Shield	82	1410P	Hvy. Internal Lockwasher Type A 5/16
37	432J	Decal (on Tine Shield)	83	9548R	Clutch Adjusting Clip
39	9177R	Engine Sheave	84	9549R	Aluminum Stop
40	9185R	Belt Guard Bracket	85	334J	Cable - 29"
41	130202	Engine, 5 H.P. Briggs & Stratton Type No. 0830-01	86	336J	Clutch Lever
42	9210R	Knob	87	9692R	Decal - Engine
43	9225R	Decal - Instruction	--	2069J	Owners Manual
44	9209R	Handle Panel			
45	9618R	Decal - Stripes			
46	340J	Throttle Control			

*STANDARD HARDWARE--PURCHASE LOCALLY