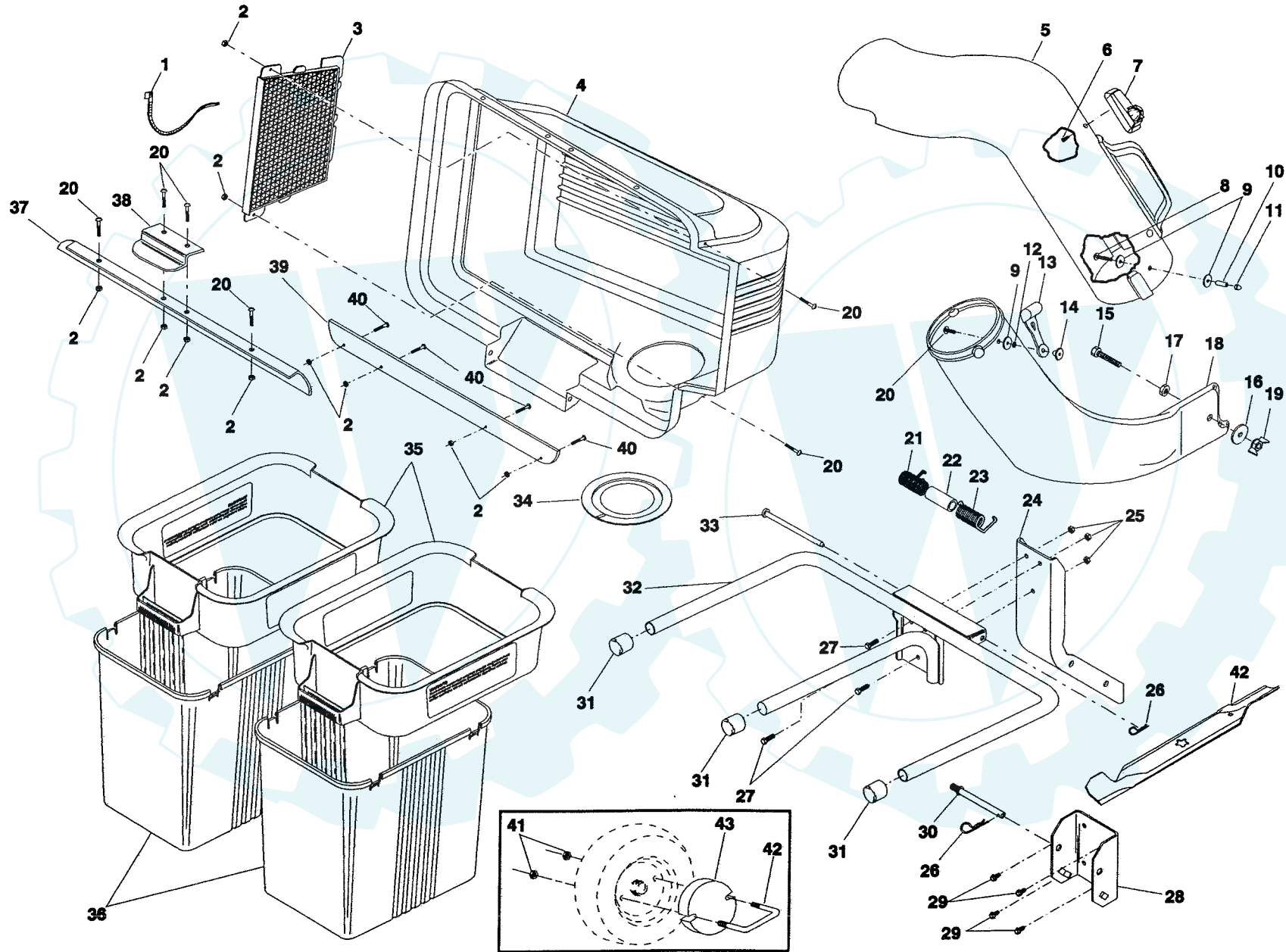


REPAIR PARTS/PIECES DE RECHANGE

GRASS CATCHER - - MODEL NUMBER CER38B / RAMASSE-HERBE - - NUMERO DE MODELE CER38B



REPAIR PARTS/PIECES DE RECHANGE

GRASS CATCHER- - MODEL NUMBER CER38B / RAMASSE-HERBE - - NUMERO DE MODELE CER38B

| KEY NO. | PART NO. | DESCRIPTION | DESCRIPTION | KEY NO. | PART NO. | DESCRIPTION | DESCRIPTION |
|---------|----------|----------------------------|---------------------------|---------|----------|----------------------------------|---|
| 1 | 7192J | Tie, Cable | Attache plastique | 26 | 4939M | Spring, Retainer | Ressort de retenue |
| 2 | 69180 | Nut, Crownlock #10-24 | Ecrou auto-serrant #10-24 | 27 | 74760512 | Bolt, Hex 5/16-18 x 3/4 | Boulon H 5/16-18 x 3/4 |
| 3 | 127533 | Screen, Cover | Ecran de couvercle | 28 | 130889 | Bracket, Mounting | Support de montage |
| 4 | 126816 | Cover | Couvercle | 29 | 17490508 | Screw 5/16-18 x 1/2 | Vis autotaraudeuse H 5/16-18 x 1/2 |
| 5 | 135465 | Chute, Upper | Glissière supérieure | 30 | 131137 | Hex, Self Tapping | Goupille du poteau de soutien |
| 6 | 18021008 | Screw, Special #10-14x1/2 | Vis spéciale #10-14x1/2 | 31 | 134496 | Pin, Support Post | Capuchon d'extrémité de tuyau |
| 7 | 130933 | Full Bagger Indicator | Indicateur de sac plein | 32 | 126919X | Plug, Tubing End | Cadre de ramasse-herbe |
| 8 | 87175 | Screw, #10-24 x 1-1/8 | Vis #10-24 x 1-1/8 | 33 | 128600 | Bagger, Frame | Goupille de charnière |
| 9 | 19061216 | Washer 3/16x3/4x16 Ga. | Rondelle 3/16x3/4x16 Ja. | 34 | 127534 | Pin, Hinge | Garniture de couvercle |
| 10 | 7206J | Spacer, Split | Entretoise fendue | 35 | 129585 | Gasket, Cover | Contenant supérieur |
| 11 | 60867 | Nut, Acorn #10-24 | Ecrou borgne #10-24 | 36 | 129586 | Container, Top | Contenant inférieur |
| 12 | 10071000 | Washer, lock | Rondelle frein | 37 | 132256 | Container, Bottom | Sceau de couvercle |
| 13 | 109808X | Latch, Chute | Loquet de glissière | 38 | 130895 | Seal, Cover | Poignée de loquet de couvercle |
| 14 | 2029J | Nut, Weld | Ecrou spécial | 39 | 135495 | Latch Handle, Cover | Bande de scellement |
| 15 | 74930620 | Bolt, Hex 3/8-16 x 1-1/4 | Boulon H 3/8-16 x 1-1/4 | 40 | 71141008 | Strip, Seal | Vis #10-24 x 1/2 |
| 16 | 19131616 | Washer 13/32x1x16 Ga. | Rondelle 13/32x1x16 Ja. | 41 | 73800600 | Screw #10-24 x 1/2 | Ecrou frein 3/8-16 |
| 17 | 73750600 | Locknut 3/8-16 | Ecrou frein 3/8-16 | 42 | 137031 | Locknut 3/8-16 | Etrier |
| 18 | 132807 | Chute, Lower | Glissière inférieure | 43 | 123635X | U-Bolt | Poids de roue |
| 19 | 135651 | Wingnut 3/8-16 | Ecrou à oreilles 3/8-16 | 44 | 127842 | Wheel Weight | Lame de levage haut |
| 20 | 71161010 | Screw #10-24 x 5/8 | Vis #10-24 x 5/8 | — | 104419X | Blade, High Lift | Sac-poubelle; 3,0 mil. 30 gallon |
| 21 | 132796 | Spring, Cover L.H. (black) | Ressort de couvercle C.G. | — | 137814 | Bag, 3.0 mil. 30 Gallon | (N'y pas compris avec le ramasse-herbe) |
| 22 | 133235 | Spacer, Cover | Entretoise de couvercle | — | 137814 | Trash (not included with bagger) | Manuel de propriétaire |
| 23 | 132983 | Spring, Cover R.H. (gray) | Ressort de couvercle C.D. | | | Owner's Manual | |
| 24 | 127720X | Post, Support | Poteau de soutien | | | | |
| 25 | 63124 | Locknut 5/16 x 18 | Ecrou frein 5/16 x 18 | | | | |