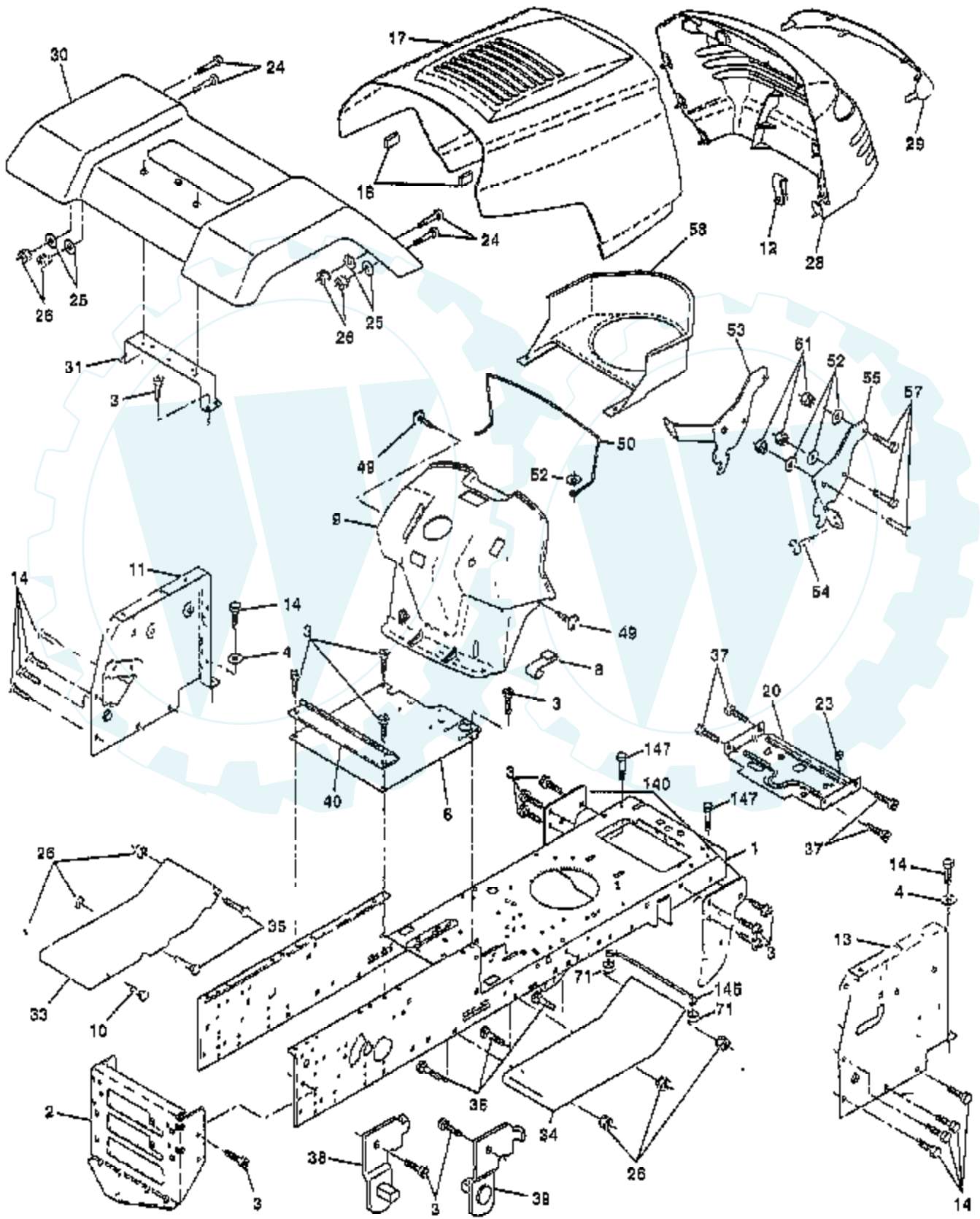


# TRACTOR - - MODEL NUMBER YP15H42B

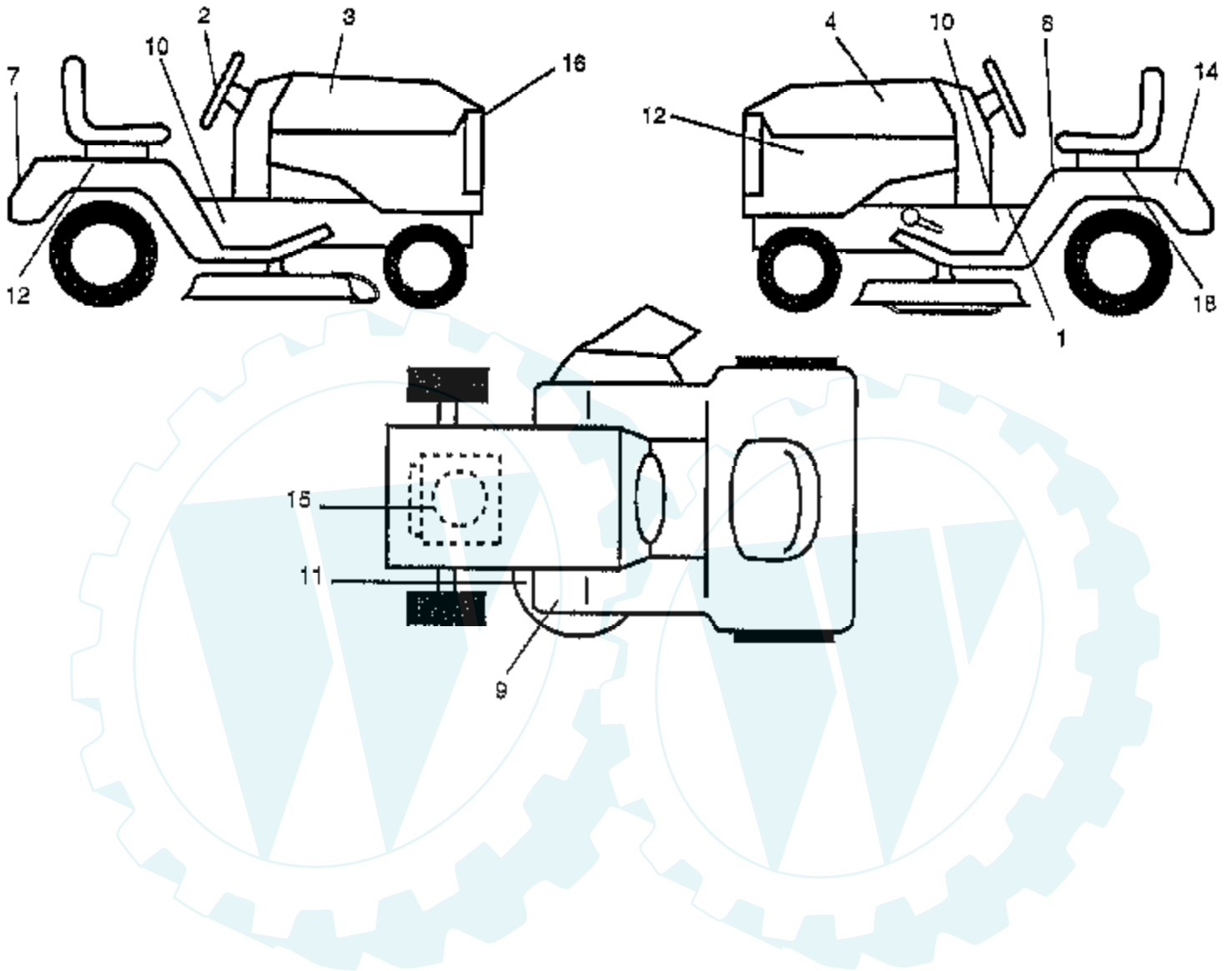
## CHASSIS AND ENCLOSURES



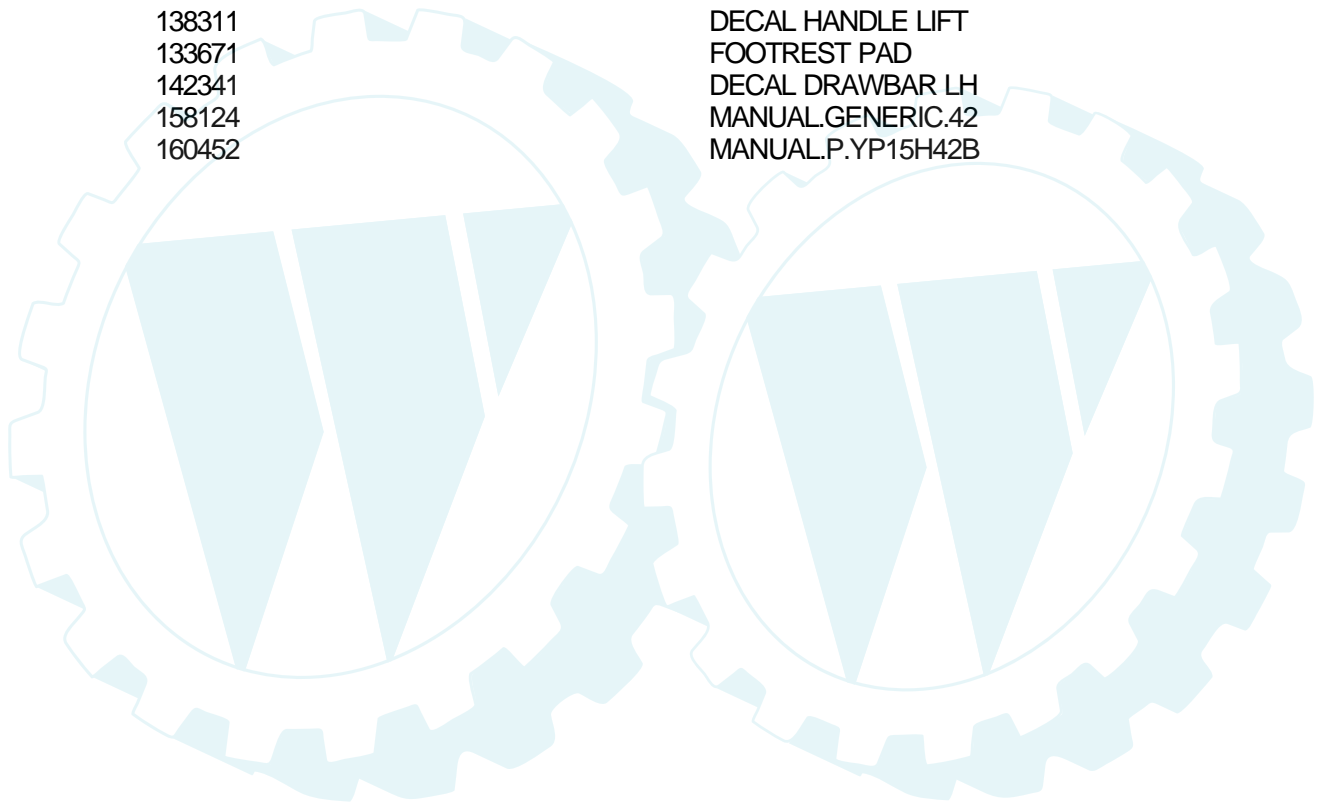
| Ref # | Part Number | Qty | Description         |
|-------|-------------|-----|---------------------|
| 1     | 159530      |     | CHASSIS ASM         |
| 2     | 140356      |     | SUB= 145009         |
| 3     | 17490612    |     | SCREW               |
| 4     | 19131216    |     | WASHER              |
| 6     | 155923      |     | SADDLE              |
| 8     | 155138      |     | CLIP.RETAINER       |
| 9     | 156243      |     | DASH.PRVT.LBL.      |
| 10    | 72140608    |     | SUB= 72110608       |
| 11    | 155927      |     | "PANEL-DASH,LH"     |
| 12    | 145660      |     | CLIP.TINNERMAN      |
| 13    | 155936      |     | "PANEL-DASH,RH"     |
| 14    | 17490608    |     | SCREW LT            |
| 17    | 139394X428  |     | SUB= 159639X428     |
| 18    | 126938X     |     | SUB= 532126938      |
| 20    | 156437      |     | "PLATE-MTG,BATT/FU" |
| 23    | 124028X     |     | SUB= 532124028      |
| 24    | 74780616    |     | BOLT                |
| 25    | 19131312    |     | WASHER              |
| 26    | 73800600    |     | NUT                 |
| 28    | 157428      |     | GRILL               |
| 29    | 146654      |     | LENS.EURO.W/DECAL   |
| 30    | 147310X428  |     | SUB= 162454X428     |
| 31    | 139976      |     | BRACKET SUPT FEND   |
| 33    | 145244X428  |     | FOOTREST PNT LH     |
| 34    | 145243X428  |     | FOOTREST.RH.LT/GT   |
| 35    | 72110606    |     | BOLT                |
| 37    | 17490508    |     | SCREW LT            |
| 38    | 139886      |     | BRACKET ASM LH      |
| 39    | 139887      |     | BRACKET ASM RH      |
| 40    | 139977      |     | SPACER FENDER LT    |
| 49    | 17490412    |     | SCREW HEX CRT       |
| 50    | 156271      |     | "ROD SUPPORT,DASH"  |
| 51    | 73800400    |     | NUT                 |
| 52    | 19091416    |     | WASHER              |
| 53    | 144697      |     | BRACKET.GRILLE.LH   |
| 54    | 17030814    |     | SUB= 91817030814    |
| 55    | 144696      |     | BRACKET.GRILLE.RH   |
| 57    | 74780412    |     | SUB= 74780414       |
| 58    | 150127      |     | AIR DUCT            |
| 71    | 73680400    |     | SUB= 73690400       |
| 140   | 158418      |     | BRKT SUSPENSION     |
| 145   | 156524      |     | "ROD POVOT,CHASSIS" |
| 147   | 74760412    |     | BOLT LT             |
|       | 5479J       |     | PLUG BUTTON T       |

### TRACTOR - - MODEL NUMBER YP15H42B

#### DECALS

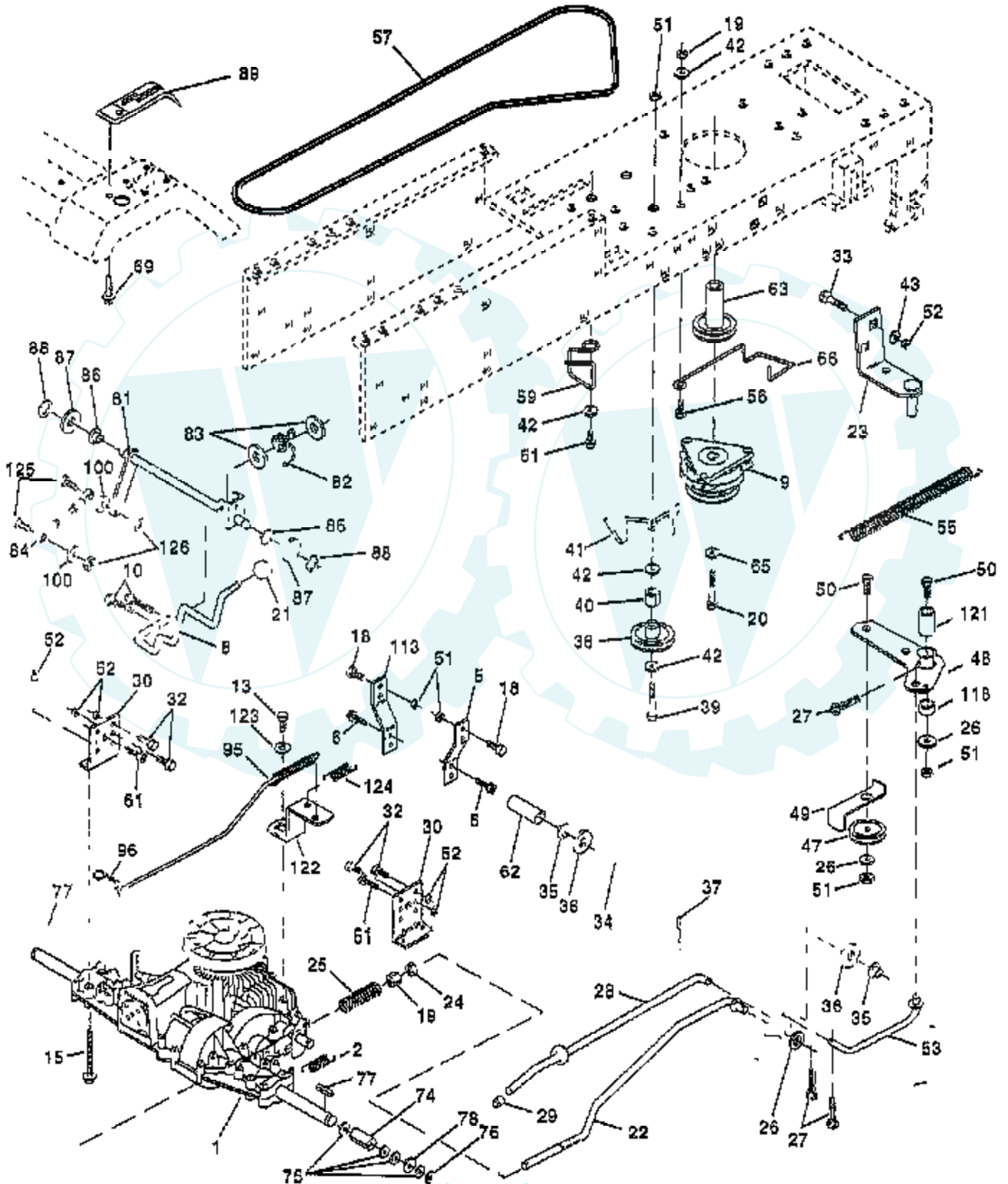


| Ref # | Part Number | Qty | Description         |
|-------|-------------|-----|---------------------|
| 1     | 156868      |     | "DECAL INST,SADDLE" |
| 2     | 156428      |     | DECAL INS STRG WH   |
| 3     | 159207      |     | "DECAL HOOD,RH"     |
| 4     | 159208      |     | "DECAL HOOD,LH"     |
| 7     | 156412      |     | DECAL FENDER        |
| 8     | 157002      |     | "DECAL DANGER,FEND" |
| 9     | 4900J       |     | DECAL T             |
| 10    | 159209      |     | DECAL CHASSIS       |
| 11    | 136832      |     | DECAL               |
| 14    | 145005      |     | DECAL.BATRY.3-3908  |
| 15    | 12-113-46   |     | DECAL ENGINE        |
| 16    | 159210      |     | DECAL LENS          |
| 17    | 156431      |     | DECAL FENDER RH     |
| 18    | 156432      |     | DECAL FENDER LH     |
|       | 138311      |     | DECAL HANDLE LIFT   |
|       | 133671      |     | FOOTREST PAD        |
|       | 142341      |     | DECAL DRAWBAR LH    |
|       | 158124      |     | MANUAL.GENERIC.42   |
|       | 160452      |     | MANUAL.P.YP15H42B   |



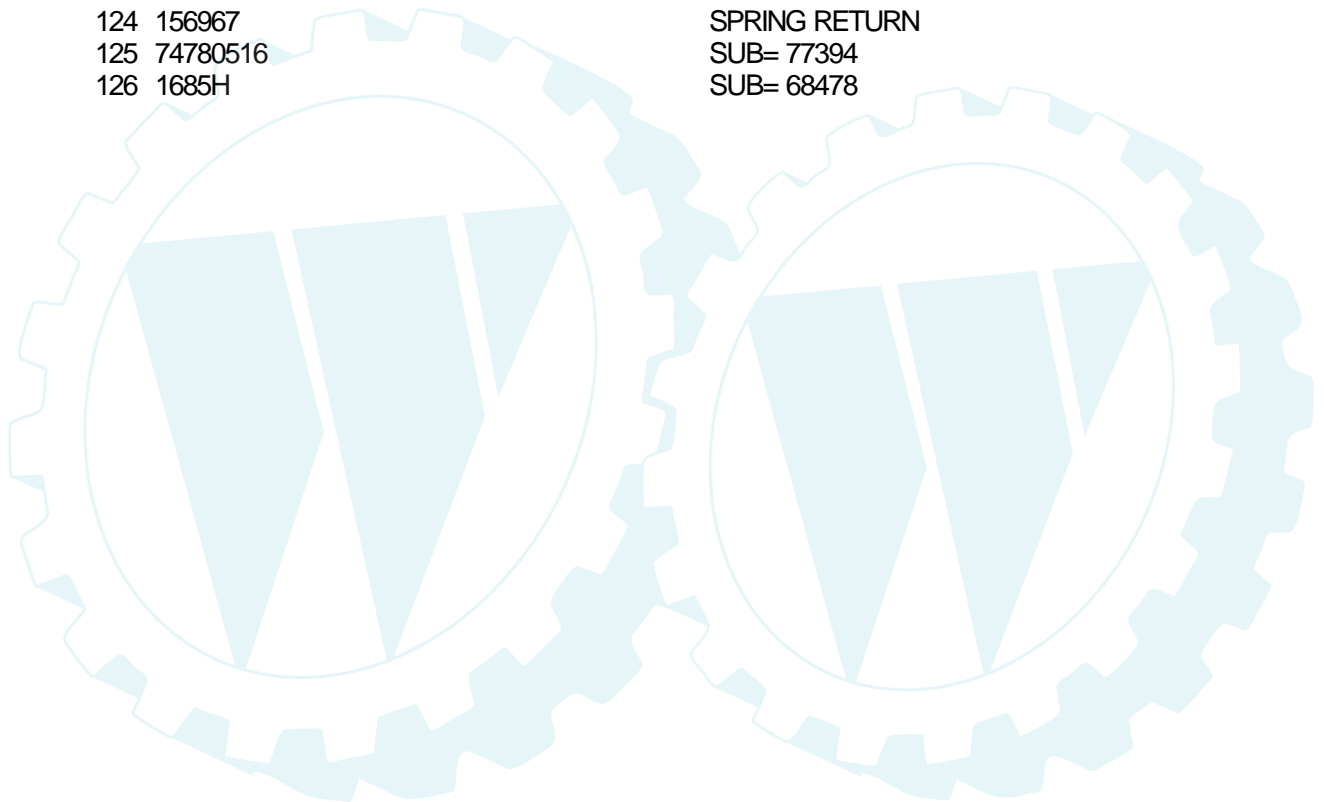
# TRACTOR -- MODEL NUMBER YP15H42B

## DRIVE



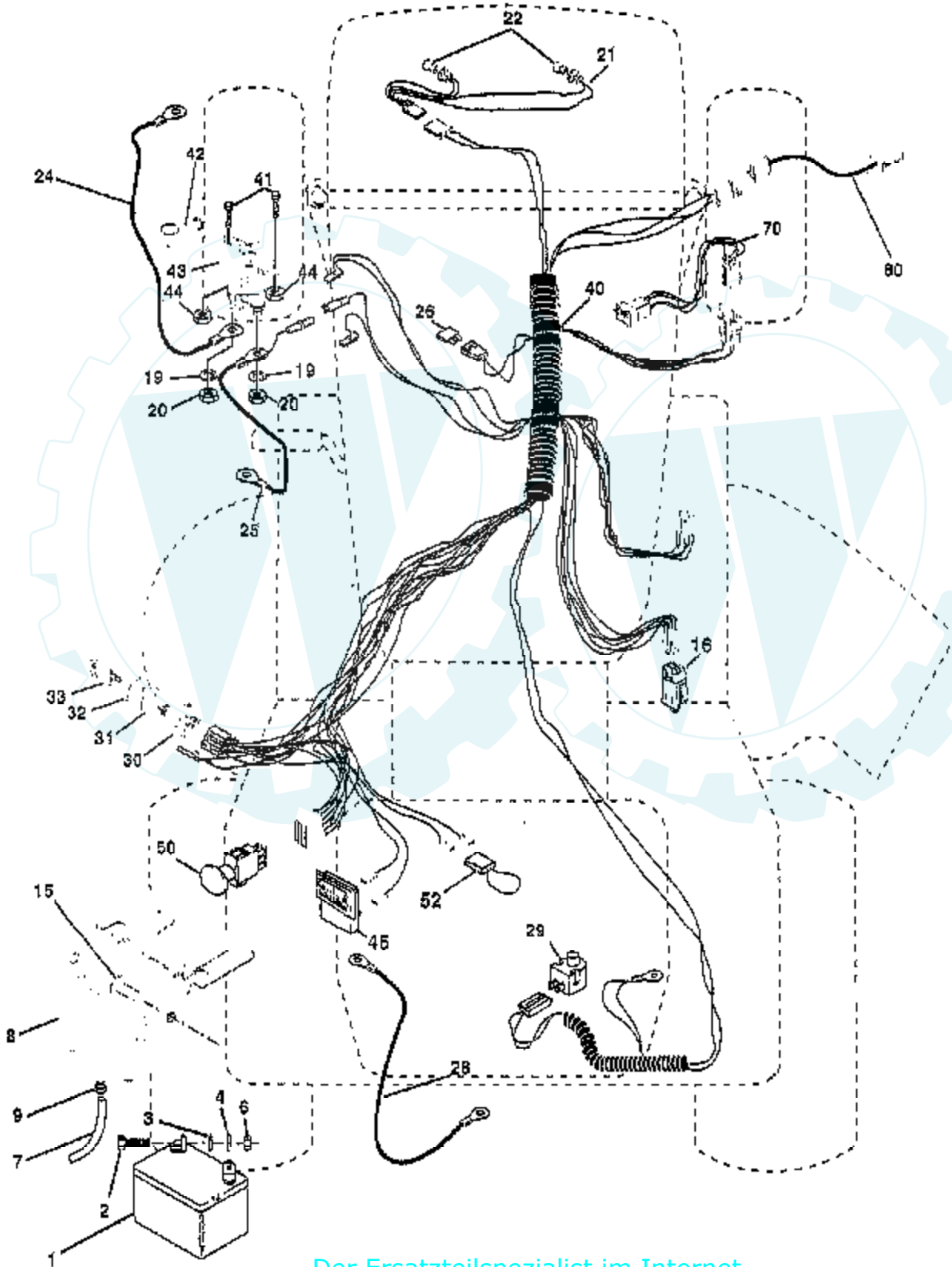
| Ref # | Part Number | Qty | Description         |
|-------|-------------|-----|---------------------|
| 1     | 205-026B    |     | TRANSAXLE, PEERLESS |
| 2     | 146682      |     | SPRING.BRAKE.RETU   |
| 5     | 121520X     |     | STRAP TORQUE        |
| 6     | 17490512    |     | SCREW               |
| 8     | 141003      |     | ROD SHIFT FEND LT   |
| 9     | 145028      |     | CLUTCH.ELECT.EVX.   |
| 10    | 76020416    |     | PIN COTTER 1/8      |
| 13    | 74550412    |     | BOLT.1/4-28.W/PAT   |
| 15    | 74490544    |     | BOLT.HX.FLG.5/16    |
| 18    | 74780616    |     | BOLT                |
| 19    | 73800600    |     | NUT                 |
| 20    | 150280      |     | BOLT.7/16-20X4.25   |
| 21    | 140845      |     | KNOB DLX BLK/BLK    |
| 22    | 130804      |     | BRAKE ROD           |
| 23    | 154978      |     | BRACKET.CLUT.MTG.   |
| 24    | 73350600    |     | NUT                 |
| 25    | 106888X     |     | SPRING ROD LT       |
| 26    | 19131316    |     | WASHER              |
| 27    | 76020412    |     | COTTER PIN          |
| 28    | 145204      |     | ROD.BRAKE.PARK.LT   |
| 29    | 71673       |     | PLUNGER CAP T       |
| 30    | 130807      |     | TRANSAXLE MTG BKT   |
| 32    | 74760512    |     | BOLT                |
| 33    | 72140506    |     | BOLT                |
| 34    | 155071      |     | SHAFT ASM-PEDAL F   |
| 35    | 120183X     |     | NYLON BEARING       |
| 36    | 19211616    |     | WASHER LT           |
| 37    | 1572H       |     | SUB= 2882J          |
| 38    | 123674X     |     | PULLEY.IDLER.FLAT   |
| 39    | 74760644    |     | BOLT                |
| 40    | 4470J       |     | SPACER T            |
| 41    | 154777      |     | SUB= 165692         |
| 42    | 19131312    |     | WASHER              |
| 43    | 19111012    |     | WASHER T            |
| 47    | 127783      |     | SUB= 139245         |
| 48    | 154604      |     | BELLCRANK ASM       |
| 49    | 123205X     |     | RETAIN BELT         |
| 50    | 74760624    |     | SUB= 74930624       |
| 51    | 73680600    |     | SUB= 73690600       |
| 52    | 73680500    |     | SUB= 73690500       |
| 53    | 105710X     |     | "LINK, CLUTCH T"    |
| 55    | 105709X     |     | "SPRING, RETURN LT" |
| 56    | 74760620    |     | SUB= 74780620       |
| 57    | 156971      |     | "V-BELT,GRD DRIVE"  |
| 59    | 140312      |     | KEEPER BELT CNTSP   |
| 61    | 17490612    |     | SCREW               |
| 62    | 123533X     |     | "COVER,PEDAL"       |
| 63    | 145868      |     | PULLEY.CLUTCH.EVX   |
| 65    | 10040700    |     | LOCKWASHER          |
| 66    | 154778      |     | KEEPER-BELT         |
| 69    | 142432      |     | SCREW HEXWSH H-L    |
| 74    | 156972      |     | "SPACER AXLE,PVST"  |
| 75    | 121749X     |     | WASHER              |
| 76    | 12000001    |     | E-RING LT           |
| 77    | 123583X     |     | SQUARE KEY          |
| 78    | 121748X     |     | WASHER              |
| 81    | 156969      |     | SHAFT ASM CROSS     |
| 82    | 123782X     |     | "SPRING,TORSION"    |

| Ref # | Part Number | Qty | Description         |
|-------|-------------|-----|---------------------|
| 83    | 19171216    |     | WASHER              |
| 84    | 156962      |     | "ROD TIE, PVST 20"" |
| 86    | 71208       |     | BUSHING             |
| 87    | 19212016    |     | WASHER D            |
| 88    | 12000008    |     | KLIP RING           |
| 89    | 151147      |     | SUB= 164893         |
| 95    | 156970      |     | ROAD ASM BYPASS     |
| 96    | 4497H       |     | RETAINER M          |
| 100   | 19111216    |     | WASHER M            |
| 113   | 127285X     |     | "STRAP,TORQUE"      |
| 118   | 154774      |     | SPACER-BELLCRANK    |
| 121   | 154419      |     | NYLINER-CLUTCHING   |
| 122   | 156963      |     | "PLATE-BYPASS,PVST" |
| 123   | 19081016    |     | WASHER              |
| 124   | 156967      |     | SPRING RETURN       |
| 125   | 74780516    |     | SUB= 77394          |
| 126   | 1685H       |     | SUB= 68478          |



# TRACTOR - - MODEL NUMBER YP15H42B

## ELECTRICAL

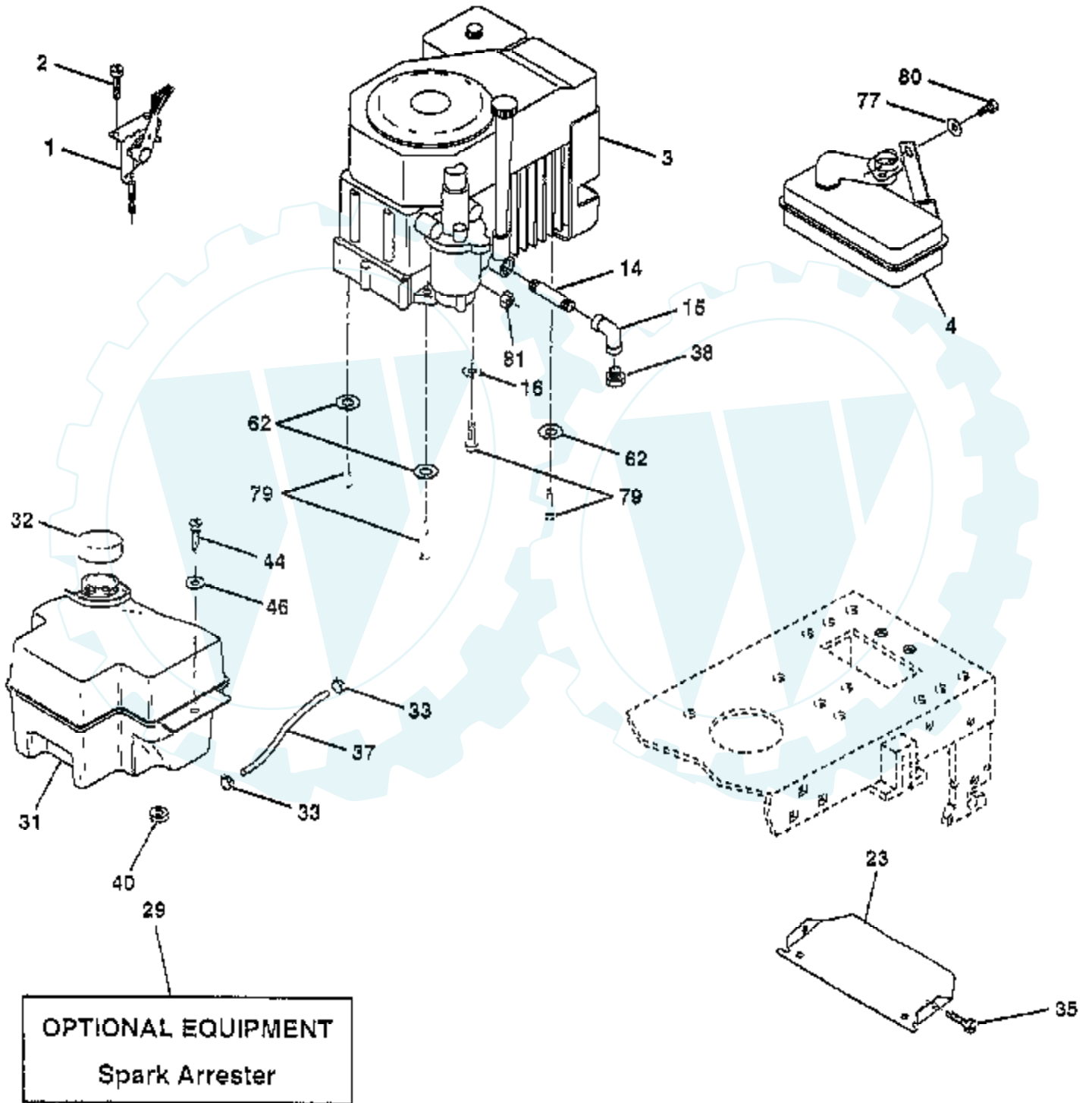




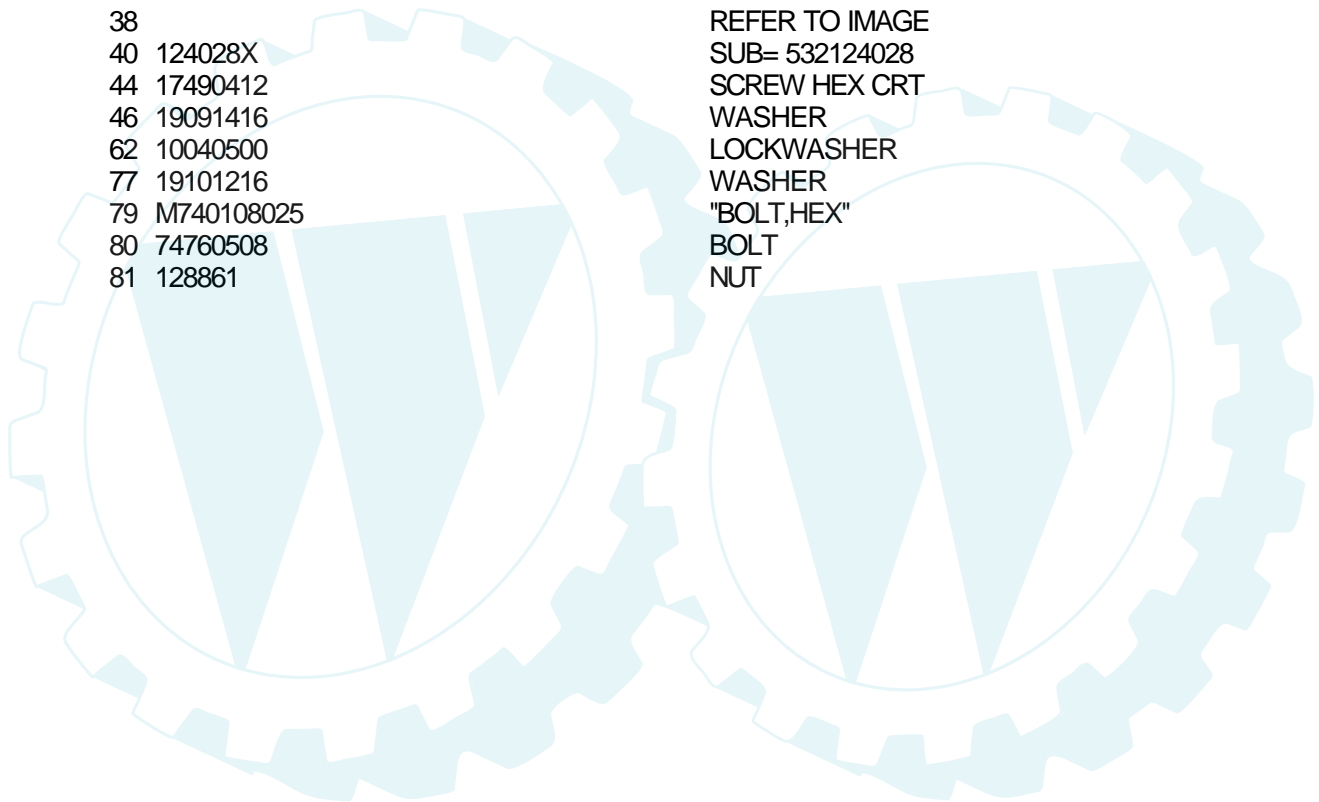
| Ref # | Part Number | Qty | Description         |
|-------|-------------|-----|---------------------|
| 1     | 144925      |     | SUB= 123899X        |
| 2     | 74760412    |     | BOLT LT             |
| 3     | 19091016    |     | WASHER              |
| 4     | 10040400    |     | LOCKWASHER          |
| 6     | 73220400    |     | SUB= 50675          |
| 7     | 109238X     |     | TUBE T              |
| 8     | 156417      |     | "CASE,BATTERY.MECH" |
| 9     | 109596X     |     | HOSE CLAMP T        |
| 15    | 147688      |     | FASTNER.SNAP-IN     |
| 16    | 153664      |     | SWITCH INTERLOCK    |
| 19    | 10090400    |     | SUB= 10040400       |
| 20    | 73350400    |     | NUT                 |
| 21    | 136850      |     | "HARNES, LIGHT SOC" |
| 22    | 4152J       |     | HEADLAMP BULB       |
| 24    | 4799J       |     | "CABLE T, BATTERY"  |
| 25    | 146147      |     | CABLE.BTRY.6GA.RD   |
| 26    | 108824X     |     | FUSE HYT            |
| 28    | 4207J       |     | CABLE T             |
| 29    | 121305X     |     | SWITCH SEAT         |
| 30    | 140301      |     | SWITCH IGN 4POS     |
| 31    | 124211X     |     | NUT IGNITION        |
| 32    | 141226      |     | COVER KEY SWITCH    |
| 33    | 122147X     |     | KEY                 |
| 40    | 158684      |     | HARNES IGNITION     |
| 41    | 71110408    |     | BOLT HXHD FIN       |
| 42    | 131563      |     | SUB= 154336         |
| 43    | 145673      |     | SUB= 146154         |
| 44    | 73640400    |     | NUT HXKEP 1/4X20    |
| 45    | 121433X     |     | SUB= 122822X        |
| 50    | 154959      |     | PTO SWITCH.BLK      |
| 52    | 141940      |     | PROTECTION LOOP     |
| 70    | 142621      |     | HARNES.ENG.B&S.     |
| 80    | 146685      |     | HARNES.CLUT.EVX.    |

# TRACTOR -- MODEL NUMBER YP15H42B

## ENGINE

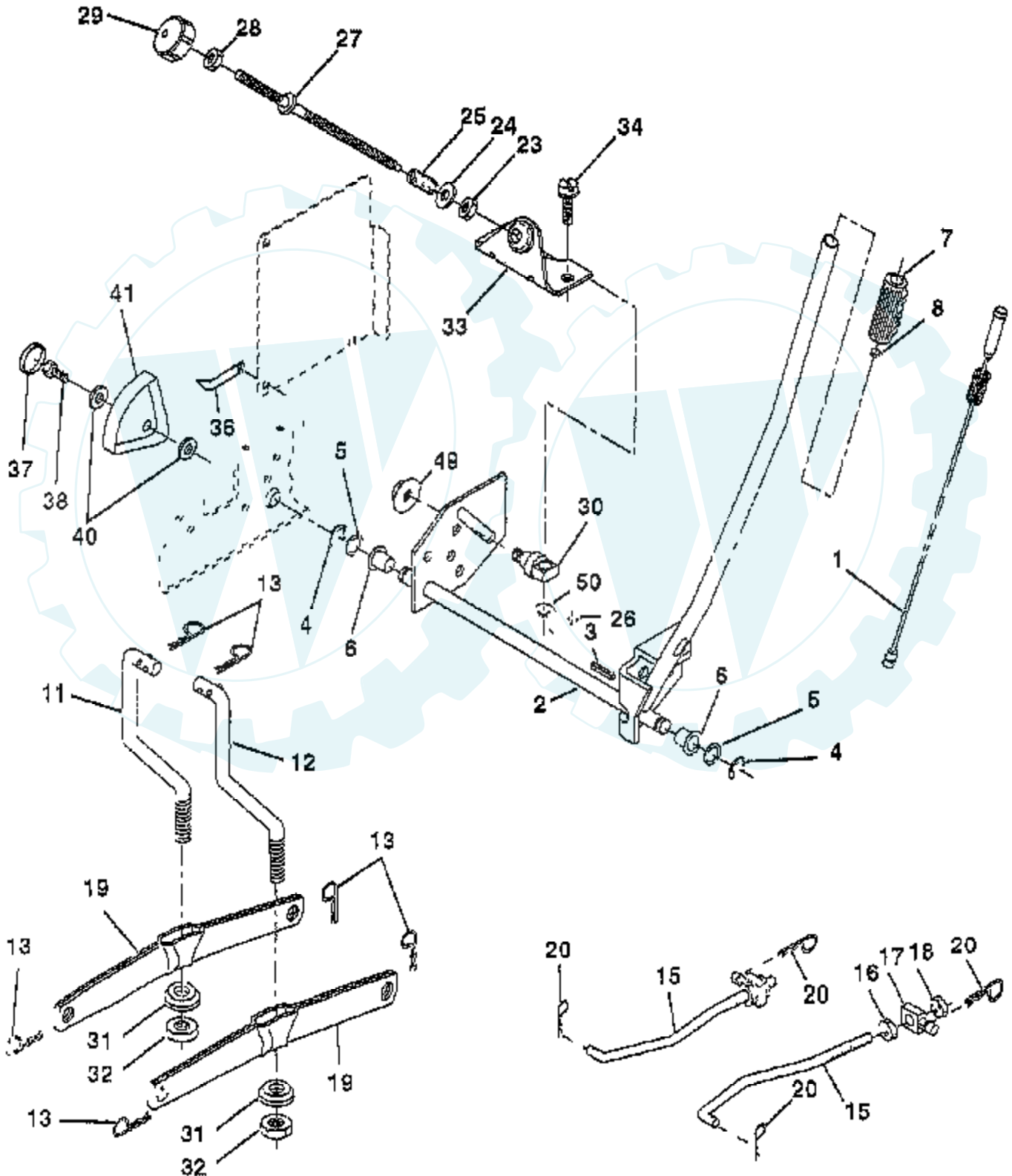


| Ref # | Part Number | Qty | Description            |
|-------|-------------|-----|------------------------|
| 1     | 141296      |     | CONTROL.THROTTLE/CHOKE |
| 2     | 17720410    |     | SCREW LT               |
| 3     | CV15S       |     | ENGINE KOHLER          |
| 4     | 137350      |     | MUFFLER.LT.12.5        |
| 14    | 13280328    |     | PIPE NIPPLE            |
| 15    | 13200300    |     | ELBOW                  |
| 16    | 11050600    |     | LOCKWASHER             |
| 23    | 156123      |     | SHIELD-HEAT            |
| 29    | 137180      |     | SUB= 532137180         |
| 31    | 140280      |     | SUB= 161911            |
| 32    | 140527      |     | CAP ASM FUEL           |
| 33    | 123487X     |     | HOSE CLAMP             |
| 35    | 17490512    |     | SCREW                  |
| 37    | 137040      |     | LINE FUEL              |
| 38    |             |     | REFER TO IMAGE         |
| 40    | 124028X     |     | SUB= 532124028         |
| 44    | 17490412    |     | SCREW HEX CRT          |
| 46    | 19091416    |     | WASHER                 |
| 62    | 10040500    |     | LOCKWASHER             |
| 77    | 19101216    |     | WASHER                 |
| 79    | M740108025  |     | "BOLT,HEX"             |
| 80    | 74760508    |     | BOLT                   |
| 81    | 128861      |     | NUT                    |



# TRACTOR - - MODEL NUMBER YP15H42B

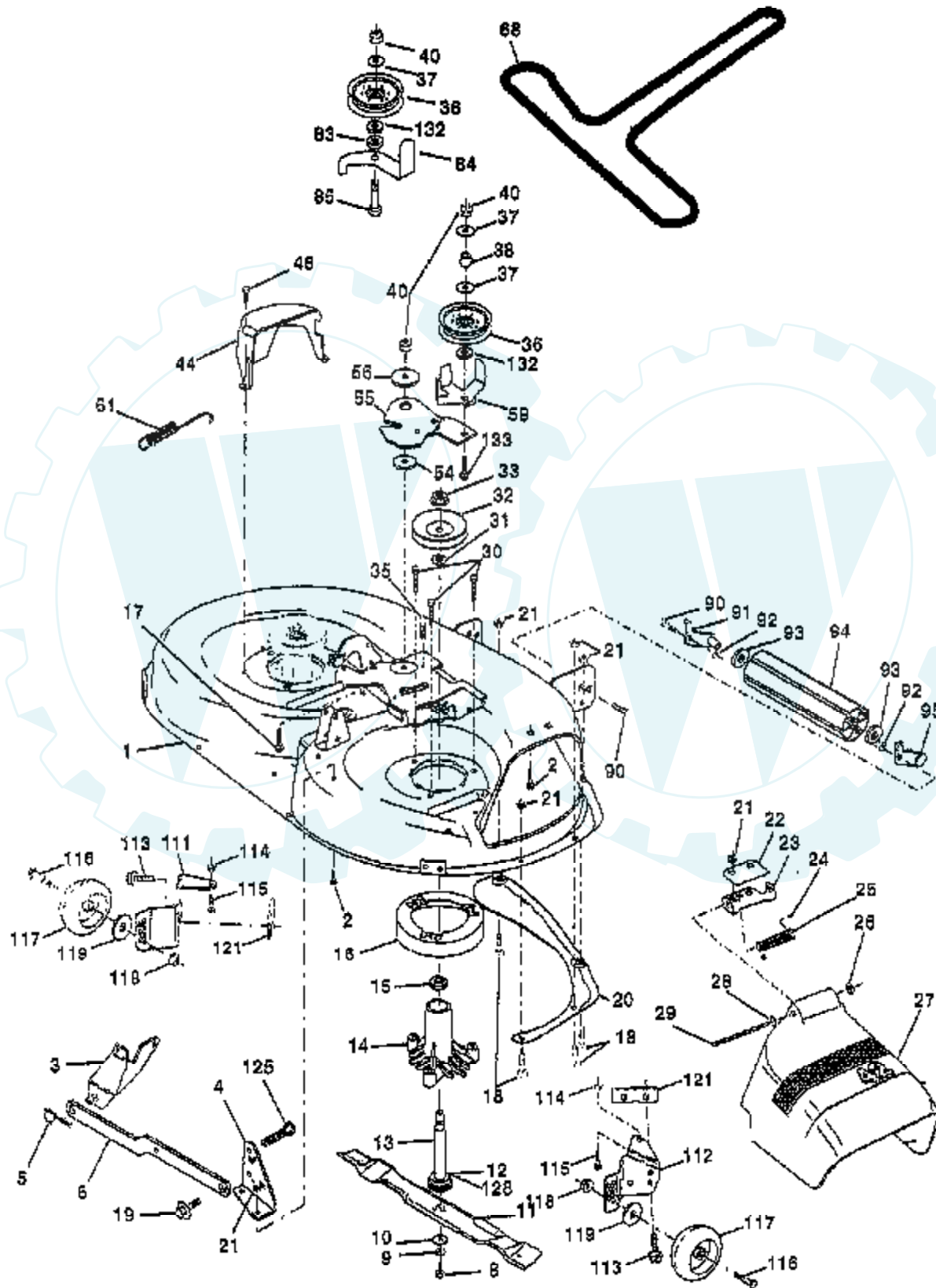
## LIFT



| Ref # | Part Number | Qty | Description       |
|-------|-------------|-----|-------------------|
| 1     | 159460      |     | WIRE ASM W.SPRING |
| 2     | 149471      |     | SHAFT ASM LIFT RH |
| 3     | 105767X     |     | PIN-GROOVE LT     |
| 4     | 12000002    |     | SUB= 2225J        |
| 5     | 19211621    |     | WASHER            |
| 6     | 120183X     |     | NYLON BEARING     |
| 7     | 125631X     |     | GRIP HANDLE       |
| 8     | 124526X     |     | SUB= 125925X      |
| 10    | 122512X     |     | SUB= 532122512    |
| 11    | 139865      |     | SUB= 918139865    |
| 12    | 139866      |     | SUB= 151140       |
| 13    | 4939M       |     | SUB= 85902        |
| 15    | 127218      |     | LINK.FRONT        |
| 16    | 73350800    |     | NUT               |
| 17    | 130171      |     | TRUNION           |
| 18    | 73800800    |     | NUT.LK.W/WSH.1/2. |
| 19    | 139868      |     | ARM SUSP REAR     |
| 20    | 3146R       |     | RETAINER.SPRING   |
| 23    | 110807X     |     | NUT T             |
| 24    | 19131016    |     | WASHER            |
| 25    | 2876H       |     | SPRING T          |
| 26    | 76020308    |     | SUB= 3145         |
| 27    | 126971X     |     | SUB= 532126971    |
| 28    | 73350600    |     | NUT               |
| 29    | 138057      |     | KNOB INF 3/8-16   |
| 30    | 150233      |     | TRUNNION          |
| 31    | 140302      |     | BEARING PVT LH    |
| 32    | 73540600    |     | NUT.CROWNLOCK.3/8 |
| 33    | 140168      |     | BRACKET STOP INF  |
| 34    | 17490608    |     | SCREW LT          |
| 36    | 155097      |     | POINTER-INDICAT   |
| 37    | 123935X     |     | "PLUG,HOLE"       |
| 38    | 17490512    |     | SCREW             |
| 40    | 19112410    |     | WASHER            |
| 41    | 123934X     |     | HEIGHT INDICATOR  |
| 49    | 145212      |     | NUT.HXFLG.LOCK.   |
| 50    | 110452X     |     | NUT PUSH M        |

# TRACTOR - - MODEL NUMBER YP15H42B

## MOWER DECK



| Ref # | Part Number | Qty | Description         |
|-------|-------------|-----|---------------------|
| 1     | 144393      |     | DECK.WELD.42.       |
| 2     | 72140506    |     | BOLT                |
| 3     | 138017      |     | BRKT ASM SWAY BAR   |
| 4     | 138440      |     | BRKT DECK SW BAR    |
| 5     | 4939M       |     | SUB= 85902          |
| 6     | 130832      |     | SUB= 130833         |
| 8     | 850857      |     | BLADE BOLT          |
| 9     | 10030600    |     | SUB= 10040600       |
| 10    | 140296      |     | WASHER.HARD.BLADE   |
| 11    | 138498      |     | "BLADE.42"" HIPERF" |
| 12    | 129895      |     | BEARING.BALL        |
| 13    | 137645      |     | SUB= 137646         |
| 14    | 128774      |     | HSG ASM MANDREL     |
| 15    | 110485X     |     | BEARING             |
| 16    | 140329      |     | STRIPPER RND MWR    |
| 17    | 72110618    |     | BOLT CARRIAGE       |
| 18    | 72140505    |     | BOLT                |
| 19    | 132827      |     | BOLT SHD 5/16-18    |
| 20    | 136888      |     | SUB= 918136888      |
| 21    | 73680500    |     | SUB= 73690500       |
| 22    | 134753      |     | STIFFENER BRKT      |
| 23    | 131267      |     | DEFLECTOR BRKT      |
| 24    | 105304X     |     | CAP-SLEEVE LT       |
| 25    | 123713X     |     | SPRING TORSION      |
| 26    | 110452X     |     | NUT PUSH M          |
| 27    | 130968      |     | DEFLECTOR.SHIELD    |
| 28    | 19111016    |     | WASHER              |
| 29    | 131491      |     | HINGE ROD           |
| 30    | 138776      |     | SUB= 157722         |
| 31    | 129963      |     | WASHER              |
| 32    | 153535      |     | PULLEY.MANDREL.42   |
| 33    | 137266      |     | SUB= 139729         |
| 35    | 133835      |     | XMAS TREE FASTNER   |
| 36    | 131494      |     | FLAT IDLER PULLEY   |
| 37    | 19131316    |     | WASHER              |
| 38    | 132823      |     | SUB= 532132823      |
| 40    | 73680600    |     | SUB= 73690600       |
| 44    | 140088      |     | GUARD MAND LH BLK   |
| 46    | 137729      |     | SCREW.1/4-20X5/8    |
| 54    | 133943      |     | HARDENED WASHER     |
| 55    | 140084      |     | SUB= 151785         |
| 56    | 122052X     |     | SPACER RETAINER     |
| 59    | 141043      |     | GUARD IDLER TUV     |
| 61    | 131950      |     | SPRING.EXTENSION    |
| 68    | 144200      |     | BELT.V.T-PATH       |
| 83    | 120958X     |     | WASHER              |
| 84    | 156084      |     | "KEEPER-BELT,FIXED" |
| 85    | 72140618    |     | BOLT RDHD 3/8-16    |
| 111   | 155197      |     | BRACKET.GWHL.LH.    |
| 112   | 155198      |     | BRACKET.GWHL.RH.    |
| 113   | 17490512    |     | SCREW               |
| 114   | 73510500    |     | NUT                 |
| 115   | 72110504    |     | SUB= 872110504      |
| 116   | 137644      |     | BOLT.SHOULDER       |
| 117   | 133957      |     | WHEEL GAGE DONUT    |
| 118   | 73930600    |     | LOCKNUT             |
| 119   | 19121414    |     | WASHER              |
| 121   | 143723      |     | BRACKET.EXTRD.GWL   |

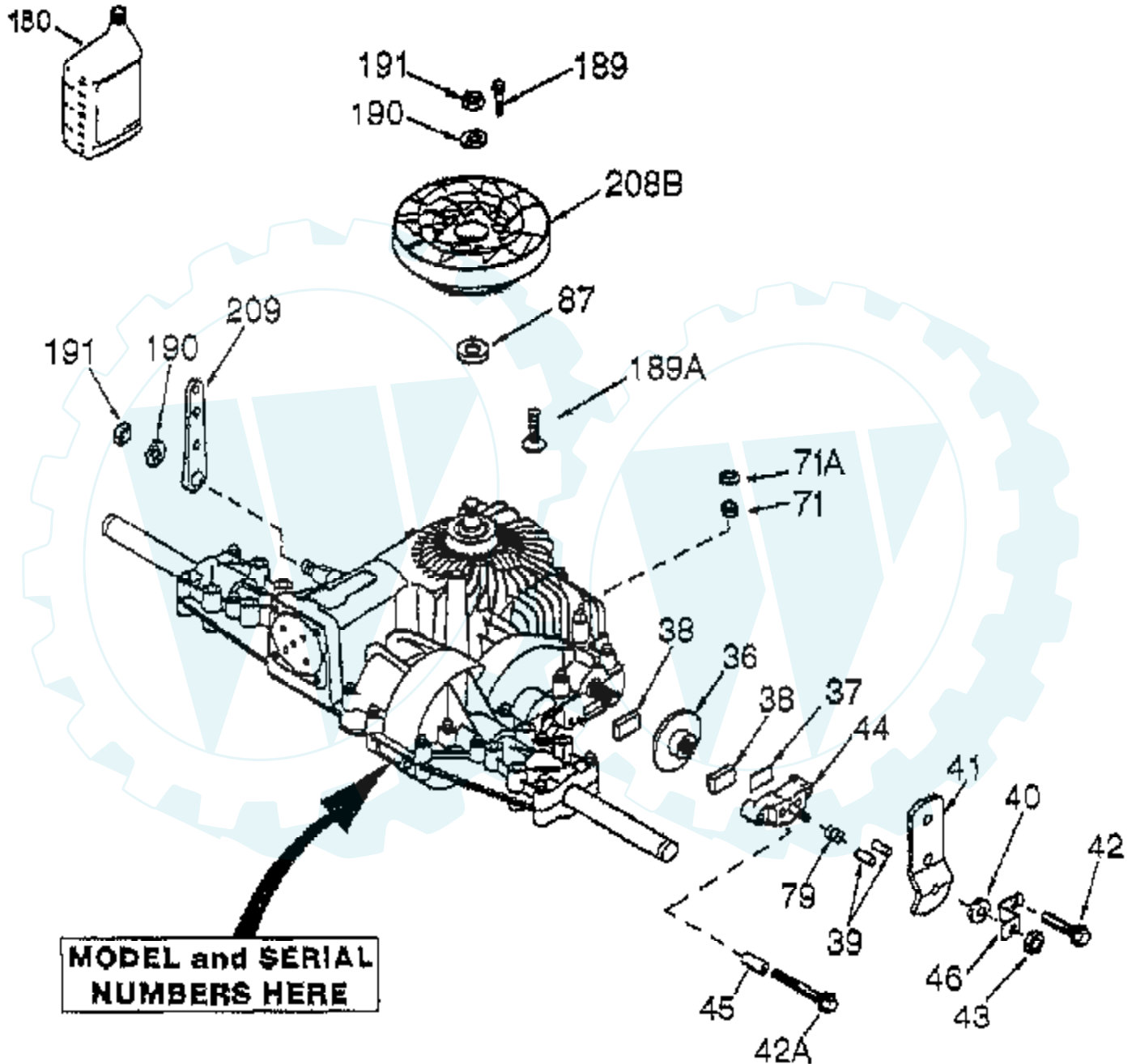
| Ref # | Part Number | Qty | Description    |
|-------|-------------|-----|----------------|
| 125   |             |     | REFER TO IMAGE |
| 128   | 153390      |     | WASHER.FELT.   |
| 132   | 19132203    |     | WASHER GT      |
| 133   | 72110622    |     | BOLT           |
|       | 130794      |     | MANDREL ASM    |
|       | 145024      |     | SUB=164964     |



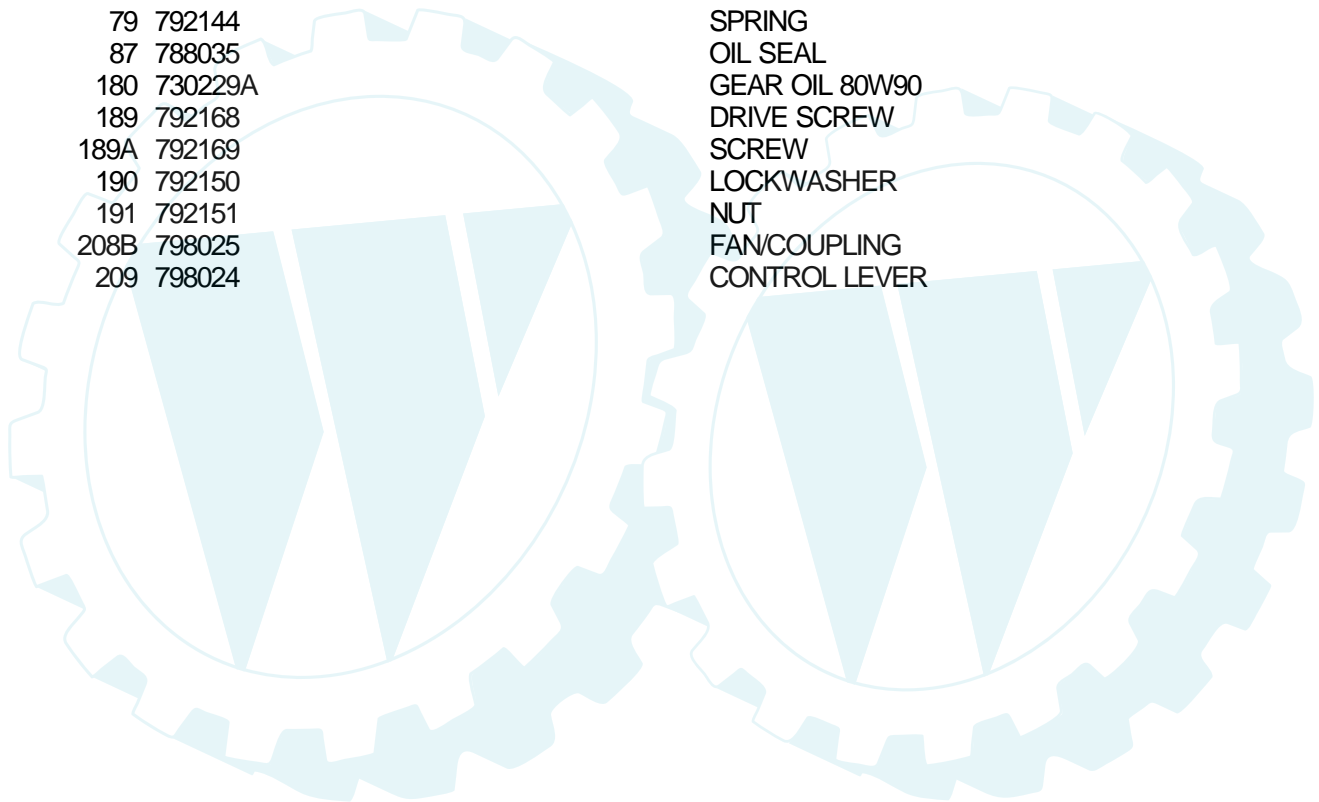


### TRACTOR -- MODEL NUMBER YP15H42B

### PEERLESS TRANSAXLE - MODEL NUMBER P205-026

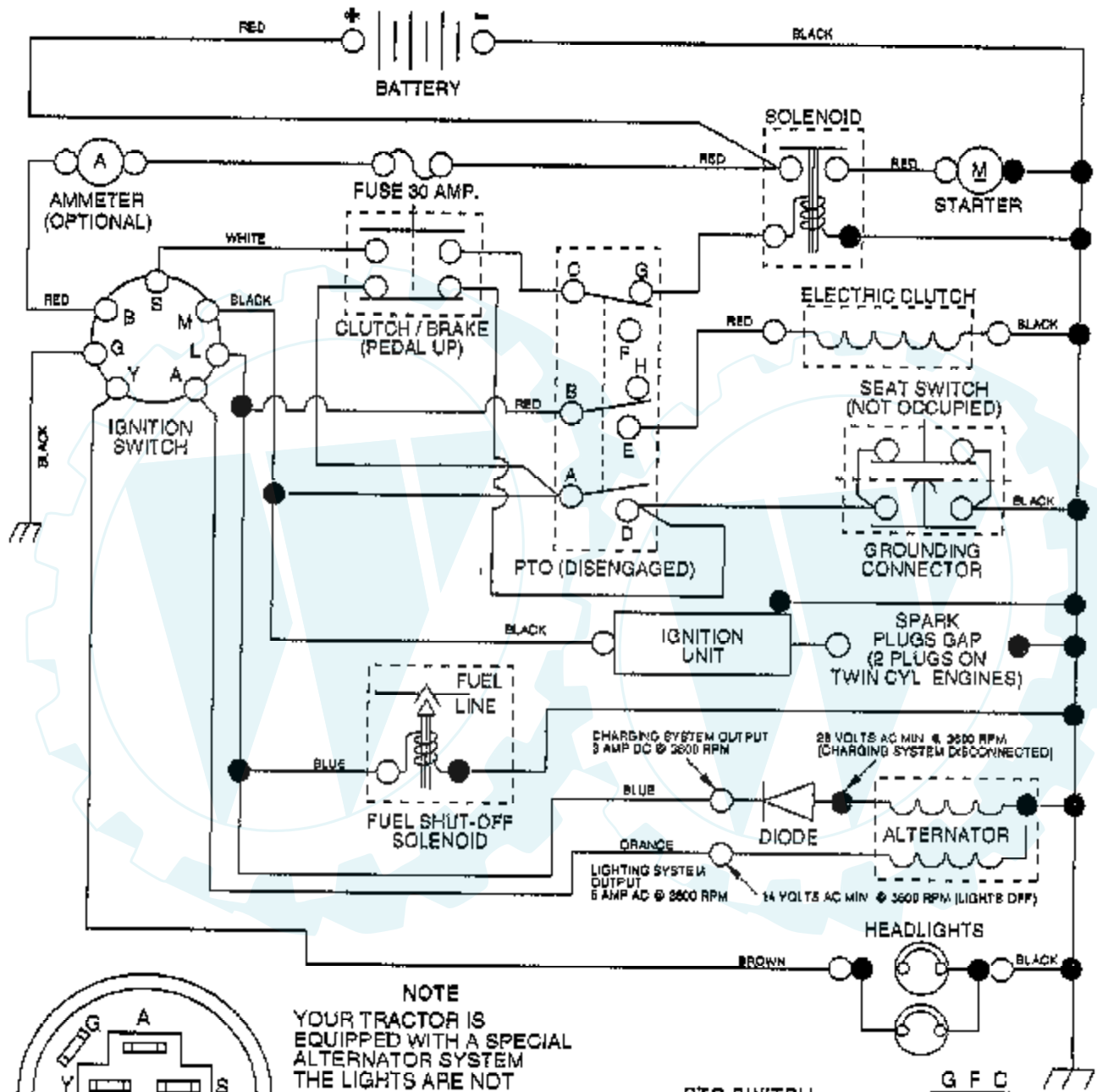


| Ref # | Part Number | Qty | Description           |
|-------|-------------|-----|-----------------------|
| 36    | 790075      |     | BRAKE DISC            |
| 37    | 790007      |     | PLATE BRAKE PAD       |
| 38    | 799021      |     | BRAKE PAD             |
| 39    | 786026      |     | PIN DOWEL             |
| 40    | 792076A     |     | WASHER                |
| 41    | 790085      |     | BRAKE LEVER           |
| 42    | 792073      |     | SCREW, 1/4-20 X 1-1/4 |
| 42A   | 792085A     |     | SCREW, 1/4-20 X 2-1/4 |
| 43    | 792075      |     | LOCKNUT 5/16-24       |
| 44    | 790025      |     | HOLDER BRAKE PAD      |
| 45    | 786066      |     | SPACER                |
| 46    | 790086      |     | BRAKE LEVER BRACKET   |
| 71    | 788069      |     | SEAL SQUARE CUT       |
| 71A   | 792162      |     | PUSHNUT               |
| 79    | 792144      |     | SPRING                |
| 87    | 788035      |     | OIL SEAL              |
| 180   | 730229A     |     | GEAR OIL 80W90        |
| 189   | 792168      |     | DRIVE SCREW           |
| 189A  | 792169      |     | SCREW                 |
| 190   | 792150      |     | LOCKWASHER            |
| 191   | 792151      |     | NUT                   |
| 208B  | 798025      |     | FAN/COUPLING          |
| 209   | 798024      |     | CONTROL LEVER         |



# TRACTOR - - MODEL NUMBER YP15H46B

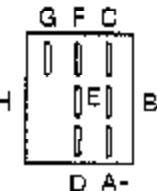
## SCHEMATIC



### NOTE

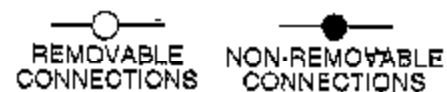
YOUR TRACTOR IS EQUIPPED WITH A SPECIAL ALTERNATOR SYSTEM. THE LIGHTS ARE NOT CONNECTED TO THE BATTERY, BUT HAVE THEIR OWN ELECTRICAL SOURCE. BECAUSE OF THIS, THE BRIGHTNESS OF THE LIGHTS WILL CHANGE WITH ENGINE SPEED. AT IDLE THE LIGHTS WILL DIM. AS THE ENGINE IS SPEEDED UP, THE LIGHTS WILL BECOME THEIR BRIGHTEST.

| PTO SWITCH |                     |
|------------|---------------------|
| POSITION   | CIRCUIT             |
| OFF        | C + G, B + H        |
| ON         | C + F, B + E, A + D |



### IGNITION SWITCH

| POSITION  | CIRCUIT   | "MAKE" |
|-----------|-----------|--------|
| OFF       | G + M + L | NONE   |
| RUN/LIGHT | B + L     | A + Y  |
| RUN       | B + L     | NONE   |
| START     | B + L + S | NONE   |



### WIRING INSULATED CLIPS

NOTE: IF WIRING INSULATED CLIPS WERE REMOVED FOR SERVICING OF UNIT, THEY SHOULD BE REPLACED TO PROPERLY SECURE YOUR WIRING.

Der Ersatzteilspezialist im Internet.

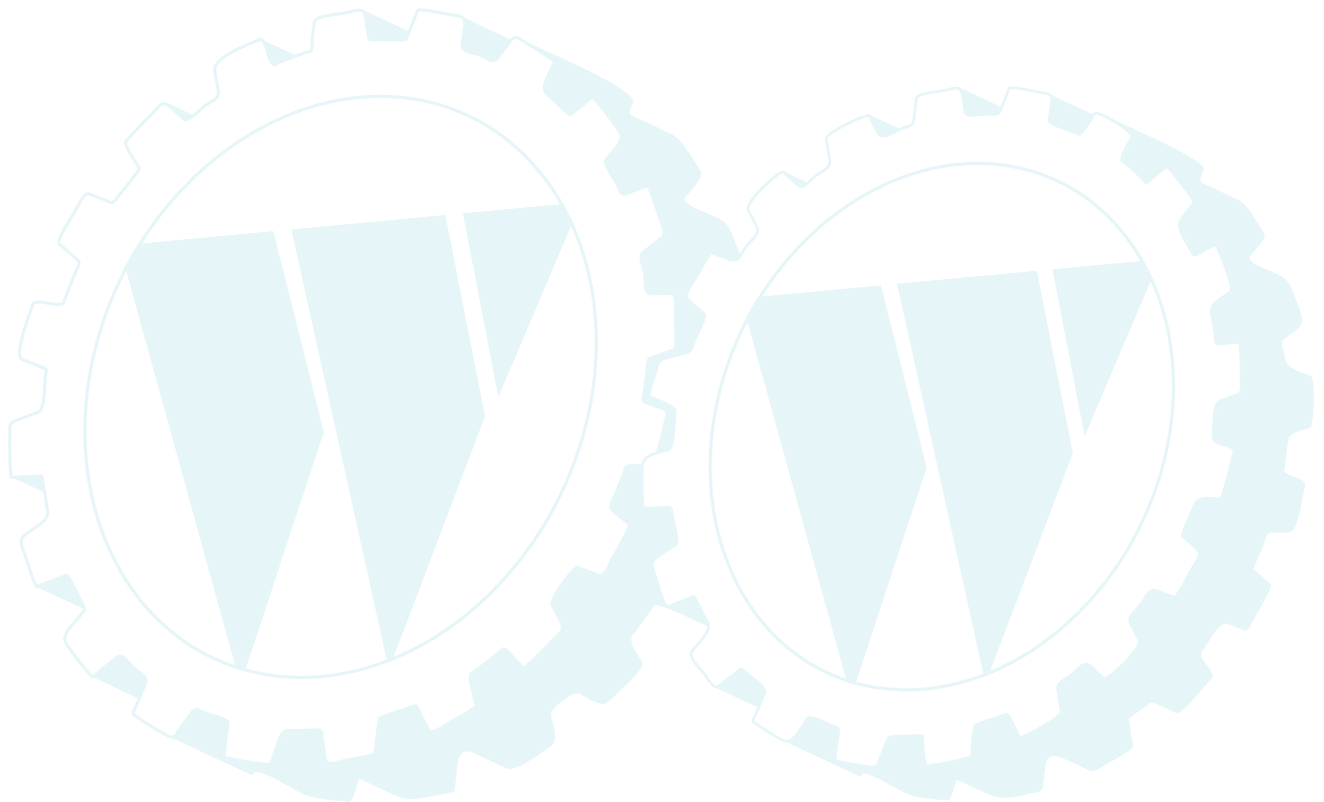
---

Ref # Part Number

Qty Description

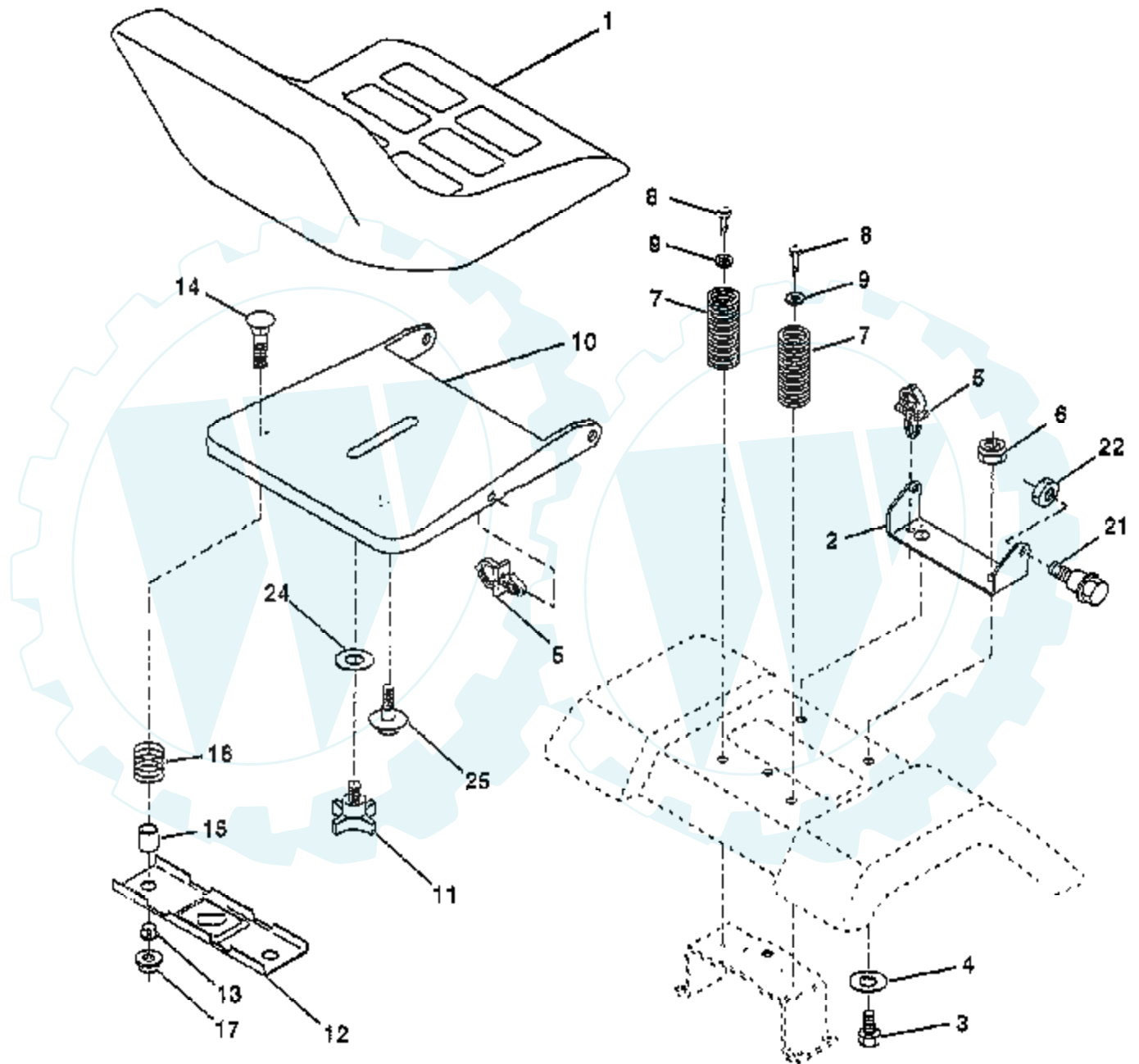
REFER TO IMAGE

---



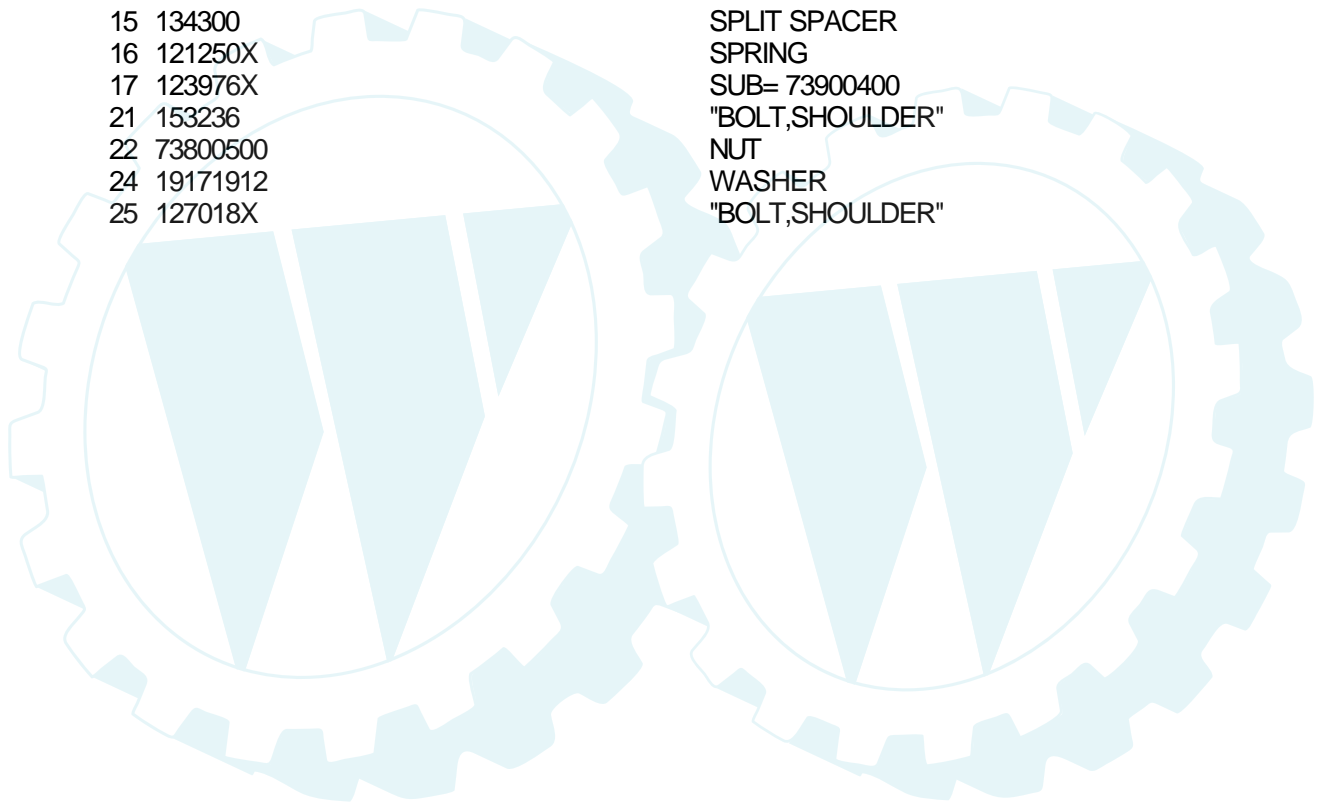
# TRACTOR - - MODEL NUMBER YP15H42B

## SEAT ASSEMBLY



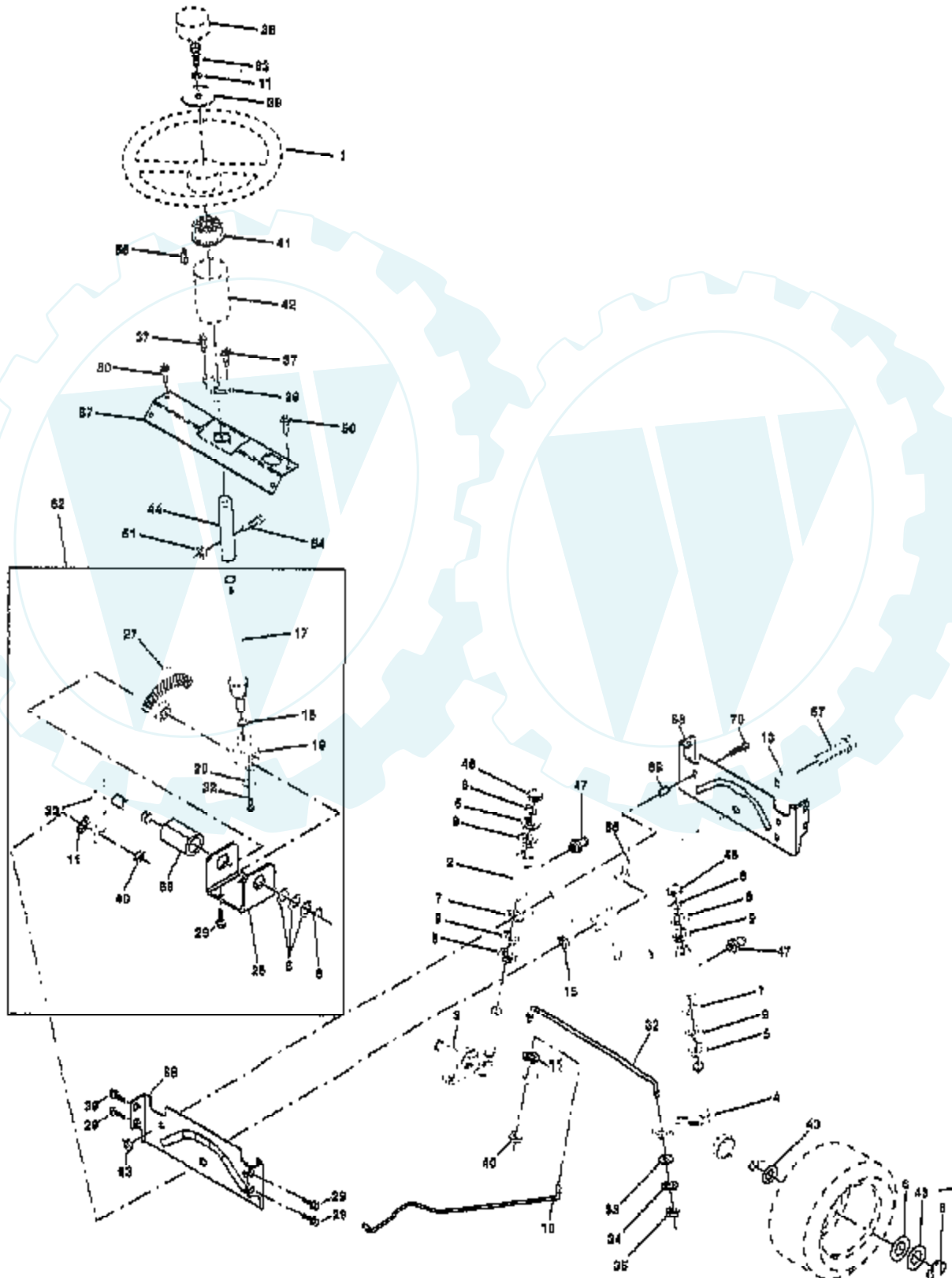
**NOTE:** All component dimensions given in U.S. Inches  
1 inch = 25.4 mm

| Ref # | Part Number | Qty | Description       |
|-------|-------------|-----|-------------------|
| 1     | 140117      |     | SEAT.2400/1416.BK |
| 2     | 140551      |     | BRACKET PVT SEAT  |
| 3     | 74760616    |     | BOLT              |
| 4     | 19131610    |     | WASHER PM         |
| 5     | 145006      |     | CLIP.PUSH-IN.HING |
| 6     | 73800600    |     | NUT               |
| 7     | 124181X     |     | SPRING COMPRESSIO |
| 8     | 17490616    |     | SCREW GTV         |
| 9     | 19131614    |     | WASHER            |
| 10    | 155925      |     | PAN-SEAT          |
| 11    | 120068X     |     | "KNOB 1/2"" YT"   |
| 12    | 121246X     |     | BRKT SWITCH       |
| 13    | 121248X     |     | BUSHING           |
| 14    | 72050411    |     | SUB= 872050411    |
| 15    | 134300      |     | SPLIT SPACER      |
| 16    | 121250X     |     | SPRING            |
| 17    | 123976X     |     | SUB= 73900400     |
| 21    | 153236      |     | "BOLT,SHOULDER"   |
| 22    | 73800500    |     | NUT               |
| 24    | 19171912    |     | WASHER            |
| 25    | 127018X     |     | "BOLT,SHOULDER"   |



# TRACTOR -- MODEL NUMBER YP15H42B

## STEERING ASSEMBLY

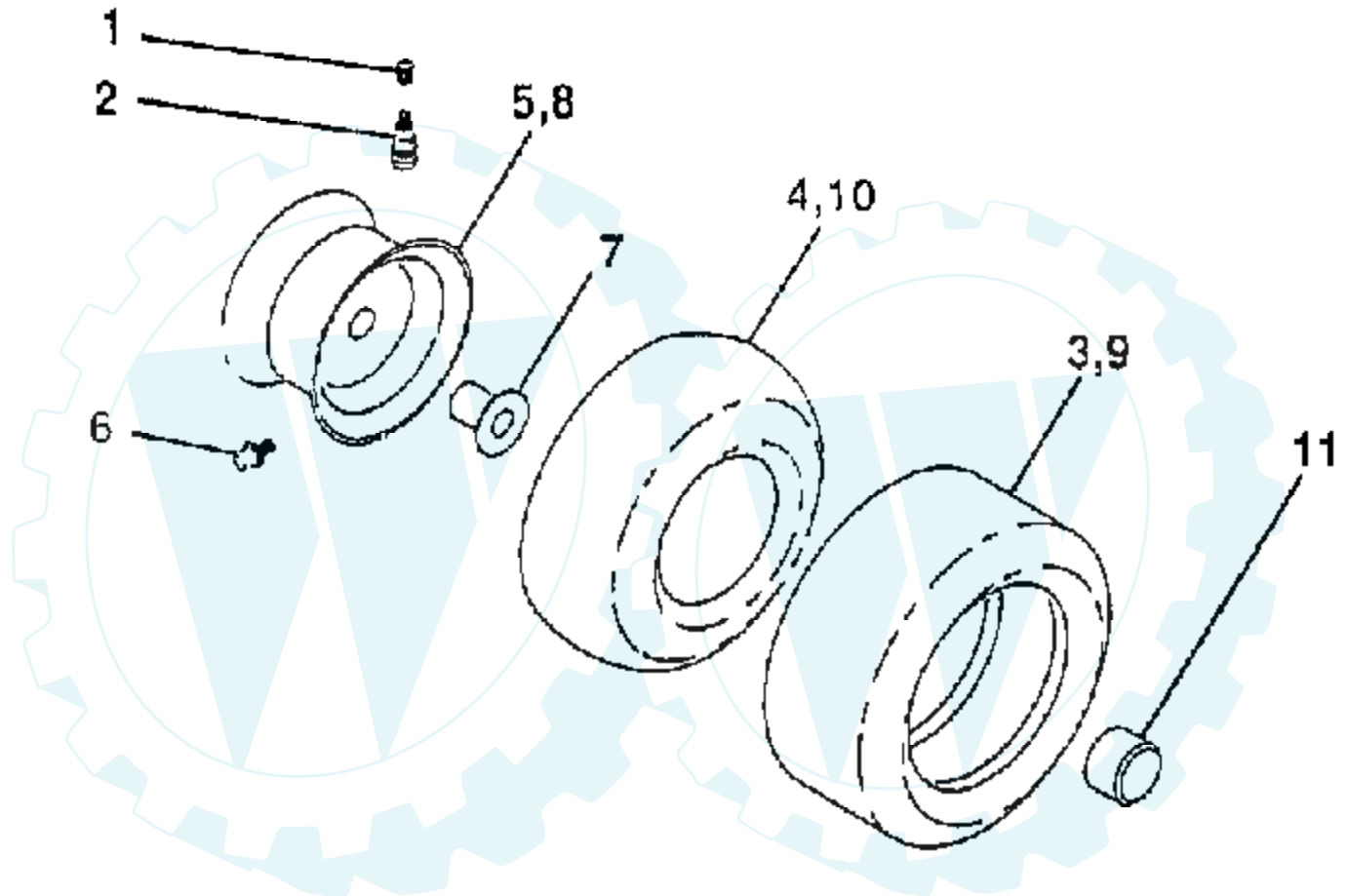


| Ref # | Part Number | Qty | Description                     |
|-------|-------------|-----|---------------------------------|
| 1     | 121472X     |     | SUB= 150546                     |
| 2     | 154427      |     | AXLE ASM                        |
| 3     | 156483      |     | SPINDLE.ASM.LH                  |
| 4     | 157473      |     | "SPINDLE ASM,RH"                |
| 5     | 6266H       |     | WASHER .T                       |
| 6     | 121748X     |     | WASHER                          |
| 7     | 19272016    |     | WASHER                          |
| 8     | 12000029    |     | RING                            |
| 9     | 3366R       |     | COL. SRTG. BEAR.                |
| 10    | 156438      |     | DRAGLINK-STAMPED                |
| 11    | 10040600    |     | LOCKWASHER                      |
| 13    | 154779      |     | BEARING AXLE                    |
| 15    | 73901000    |     | "NUT-LOC,FLANGE LT"             |
| 17    | 156546      |     | SHAFT ASM STEERIN               |
| 18    | 57079       |     | THRUST WASHER                   |
| 19    | 124035X     |     | SUPPORT.SHAFT                   |
| 20    | 126684X     |     | SUB= 532126684                  |
| 22    | 71200410    |     | SCREW HEX SOC1/4-               |
| 23    | 127501      |     | SUB= 918127501                  |
| 25    | 154406      |     | BRKT-STEERING                   |
| 27    | 136874      |     | GEAR SECTOR                     |
| 29    | 17490612    |     | SCREW                           |
| 32    | 139929      |     | ROD.TIE.19.75                   |
| 33    | 1911216     |     | WASHER 11/32 X 3/4 /16 GA       |
| 34    | 10040500    |     | LOCKWASHER                      |
| 35    | 73810500    |     | NUT.LOCK.5/16-24                |
| 36    | 155104      |     | BUSHING.STR.623                 |
| 37    | 152927      |     | "SCREW-TT,10-32 FL"             |
| 38    | 126805X     |     | "INSERT,STR WHEEL"              |
| 39    | 19133808    |     | WASHER T                        |
| 40    | 7810H       |     | GRIPCO NUT                      |
| 41    | 100711L     |     | ADAPTER LT                      |
| 42    | 140216      |     | BOOT SHAFT STEER                |
| 43    | 121749X     |     | WASHER                          |
| 44    | 153721      |     | SHAFT EXT STEERIN               |
| 46    | 121232X     |     | CAP                             |
| 47    | 6855M       |     | ZERK M                          |
| 50    | 17490412    |     | SCREW HEX CRT                   |
| 51    | 73800500    |     | NUT                             |
| 53    | 73680600    |     | SUB= 73690600                   |
| 54    | 74780520    |     | BOLT                            |
| 55    | 140285      |     | CLIP TINNEMAN                   |
| 57    | 140172      |     | SUPPORT SHAFT STR               |
| 62    | 156594      |     | KIT STEERING ASM                |
| 63    | 74780616    |     | BOLT                            |
| 65    | 154780      |     | SPACER AXLE                     |
| 66    | 154404      |     | "BEARING-ARM,PITMA"             |
| 67    | 74781044    |     | BOLT                            |
| 68    | 154429      |     | BRACE AXLE                      |
| 69    | 160367      |     | "SPACER BRCAE,AXLE"             |
| 70    | 74790636    |     | BOLT FIN HEX 3/8-16 UNC X 2-1/4 |



# TRACTOR - - MODEL NUMBER YP15H42B

## WHEELS AND TIRES



**NOTE:** All component dimensions given in U S inches  
1 inch = 25.4 mm

| Ref # | Part Number | Qty | Description              |
|-------|-------------|-----|--------------------------|
| 1     | 59192       |     | VALVE CAP                |
| 2     | 65139       |     | VALVE STEM LT            |
| 3     | 106222X     |     | SUB= 122073X             |
| 4     | 59904       |     | TUBE.5.3/4.5/6           |
| 5     | 106732X427  |     | "RIM ASM 6"" FRT"        |
| 6     | 278H        |     | FITTING LT               |
| 7     | 9040H       |     | "FLANGE, BEARING"        |
| 8     | 106108X427  |     | "RIM AS 8"" REAR"        |
| 9     | 122082X     |     | SUB= 918122082X          |
| 10    | 7152J       |     | TUBE.18X9.5-8            |
| 11    | 104757X     |     | HUB CAP                  |
|       | 144334      |     | SEALANT.TIRE 10 OZ. TUBE |

