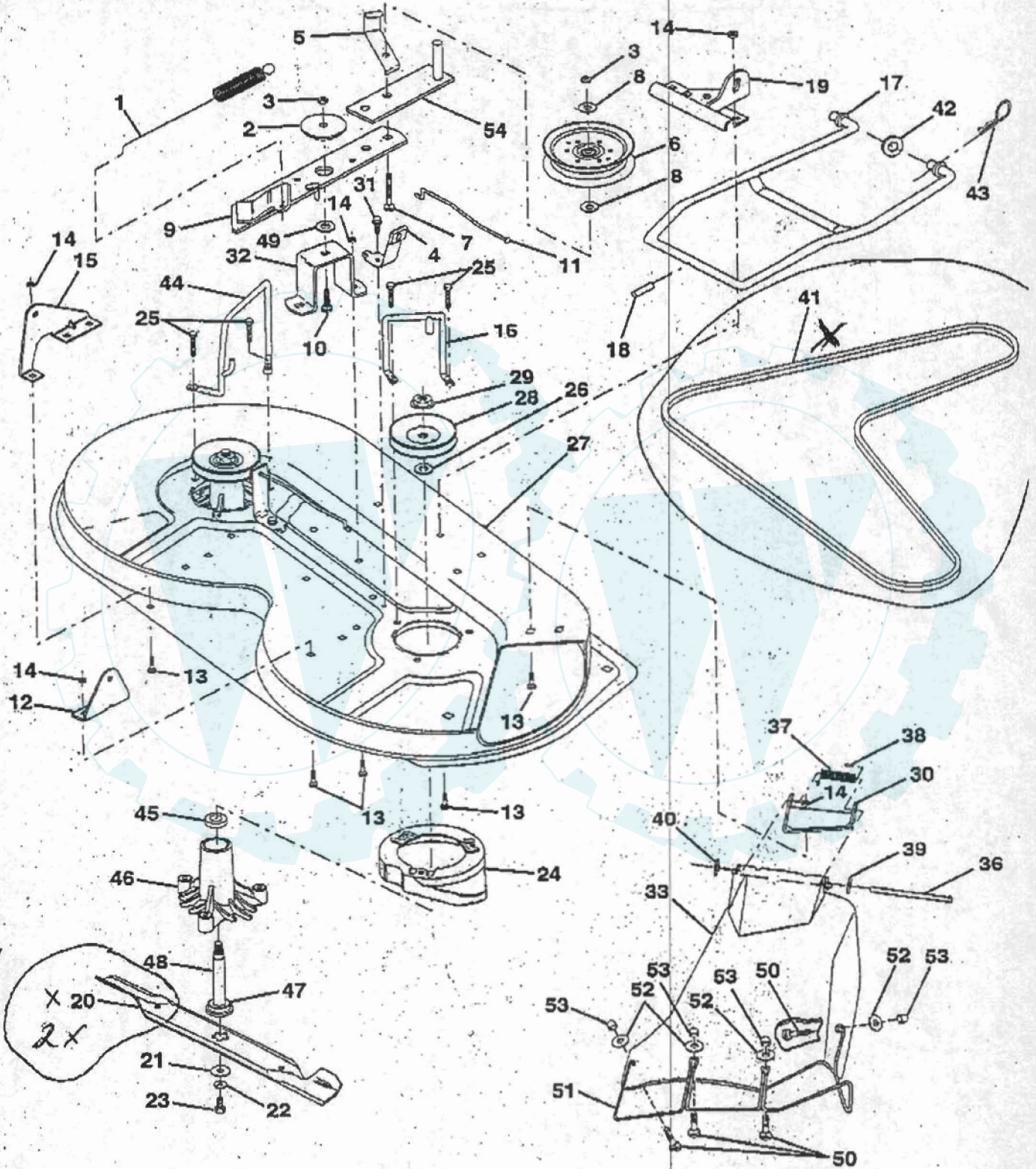


# REPAIR PARTS

## 11 HP 36" TRACTOR -- MODEL NUMBER UM1136A

### MOWER DECK



20.



**REPAIR PARTS****11 HP 36" TRACTOR -- MODEL NUMBER UM1136A****MOWER DECK**

KEY PART NO.	PART NO.	DESCRIPTION
1	140064	Spring, Mower Clutch
2	122052X	Spacer, Retainer
3	73800600	Nut, Lock Hex w/Wsh 3/8-16
4	130840	Brake Assembly
5	131251	Guide, Belt, Idler
6	121316X	Pulley, Flat, Idler
7	72110618	Bolt, Carriage 3/8-16 x 2-1/4
8	19131410	Washer 13/21 x 7/8 x 10 Gauge
9	140092	Arm Assembly, Idler, Mower
10	72140610	Bolt, Carriage 3/8-16 x 1-1/4
11	130841	Rod, Brake
12	127356	Bracket, Lift, Rear, R.H.
13	72140505	Bolt, Carriage 5/16-18 x 5/8
14	73800500	Nut, Lock Hex w/Ins 5/16-18
15	127357	Bracket, Lift, Rear, L.H.
16	140645	Keeper, R.H. TUV
17	128508	Link Assembly, Mower Stabilizer
18	128511	Pin, Drive
19	127380	Bracket, Assembly, Front
20	140101	Blade
21	140296	Washer, Hardened
22	10030600	Washer, Lock 3/8
23	850857	Bolt 3/8-24 x 1-1/4 Grade 8
24	140329	Stripper
25	138776	Screw Thdrol. Hex Head
26	129963	Washer .150 Thick
27	129983	Housing Assembly
28	129207	Pulley, Mandrel
29	137266	Nut, Flangelock 9/16
30	136631	Bracket, Assembly, Deflector
31	17490508	Screw, Hex Washer Head, Thd., Roll. 5/16-18 x 1/2
32	122051X	Arm, Support, Idler, Mower
33	139083	Deflector
36	121980X	Rod, Hinge
37	123713X	Spring, Torsion, Deflector
38	105304X	Cap, Sleeve
39	19111016	Washer 11/32 x 5/8 x 16 Gauge
40	110452X	Push Nut
41	131264	V-Belt
42	19171616	Washer 11/32 x 5/8 16 Gauge
43	3146R	Retainer, Spring
44	140610	Keeper, L.H. TUV
45	110485X	Bearing
46	128774	Housing, Mandrel, Vented
47	129895	Bearing
48	137645	Shaft, Mandrel (Includes Key Number 47)
49	133943	Washer, Hardened
50	M720305016	Bolt Rd Hd Sq Nk M5 X 0.8 X 16 mm
51	136383	Guard, Deflector Mower 36" TUV
52	19070718	Washer 7/32 x 7/16 X 18 Ga.
53	M730705000	Nut, Acom M5 X 0.8
54	136271	Plate, Arm Idler TUV
--	130794	Mandrel Assembly (Includes Key No.'s 21-23, 26, 29 and 45-48)
--	142114	Mower Deck, Complete

HARDWARE SHOWN LARGER FOR EASIER IDENTIFICATION