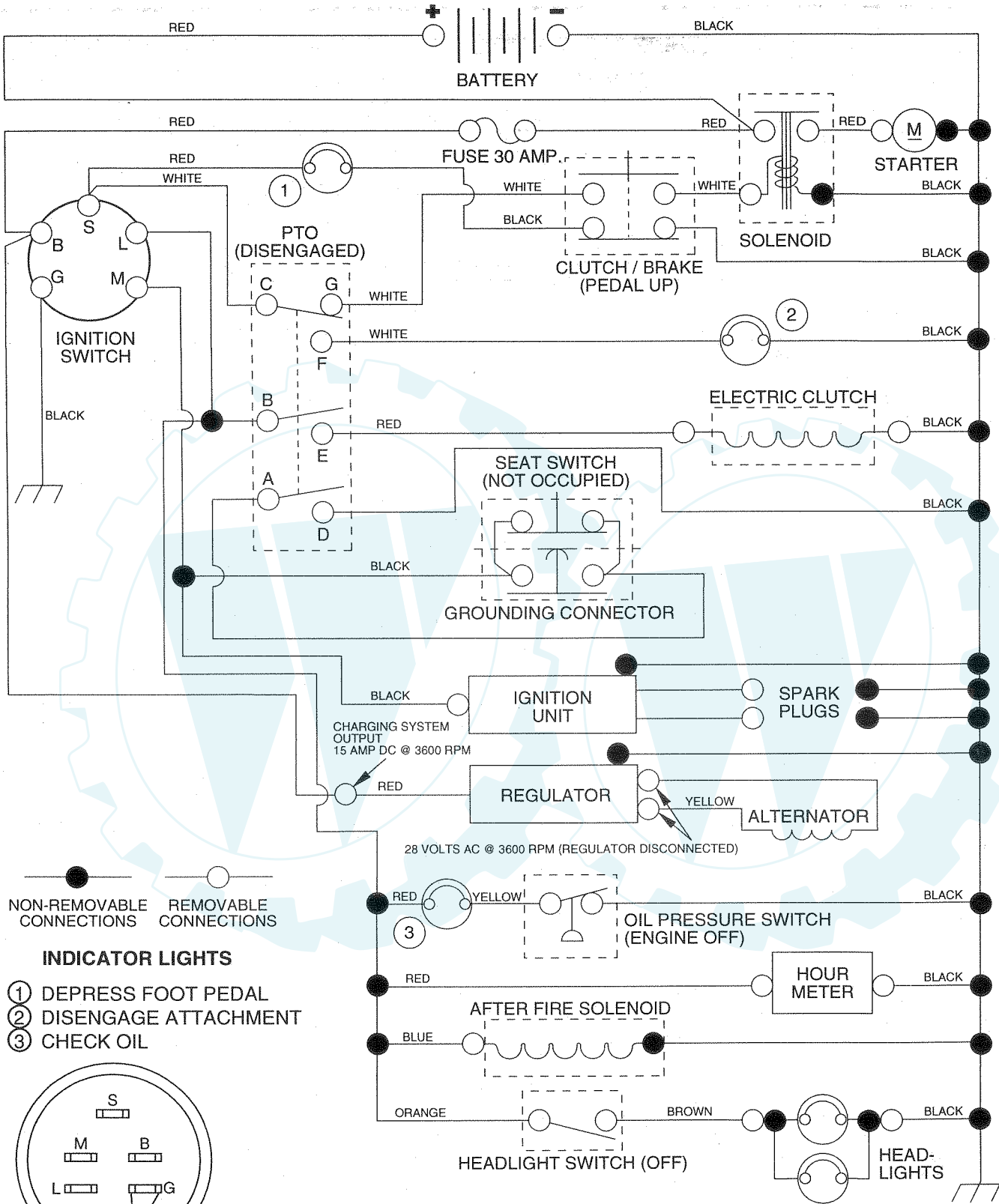


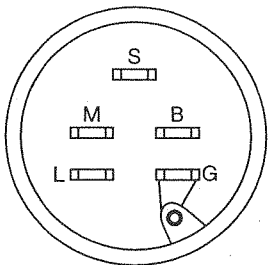
SCHEMATIC



NON-REMOVABLE CONNECTIONS
 REMOVABLE CONNECTIONS

INDICATOR LIGHTS

- ① DEPRESS FOOT PEDAL
- ② DISENGAGE ATTACHMENT
- ③ CHECK OIL



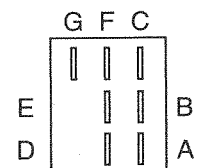
IGNITION SWITCH

POSITION	CIRCUIT
OFF	M + G
ON	B + L
START	B + S + L

WIRING INSULATED CLIPS
 NOTE: IF WIRING INSULATED CLIPS WERE REMOVED FOR SERVICING OF UNIT, THEY SHOULD BE REPLACED TO PROPERLY SECURE YOUR WIRING.

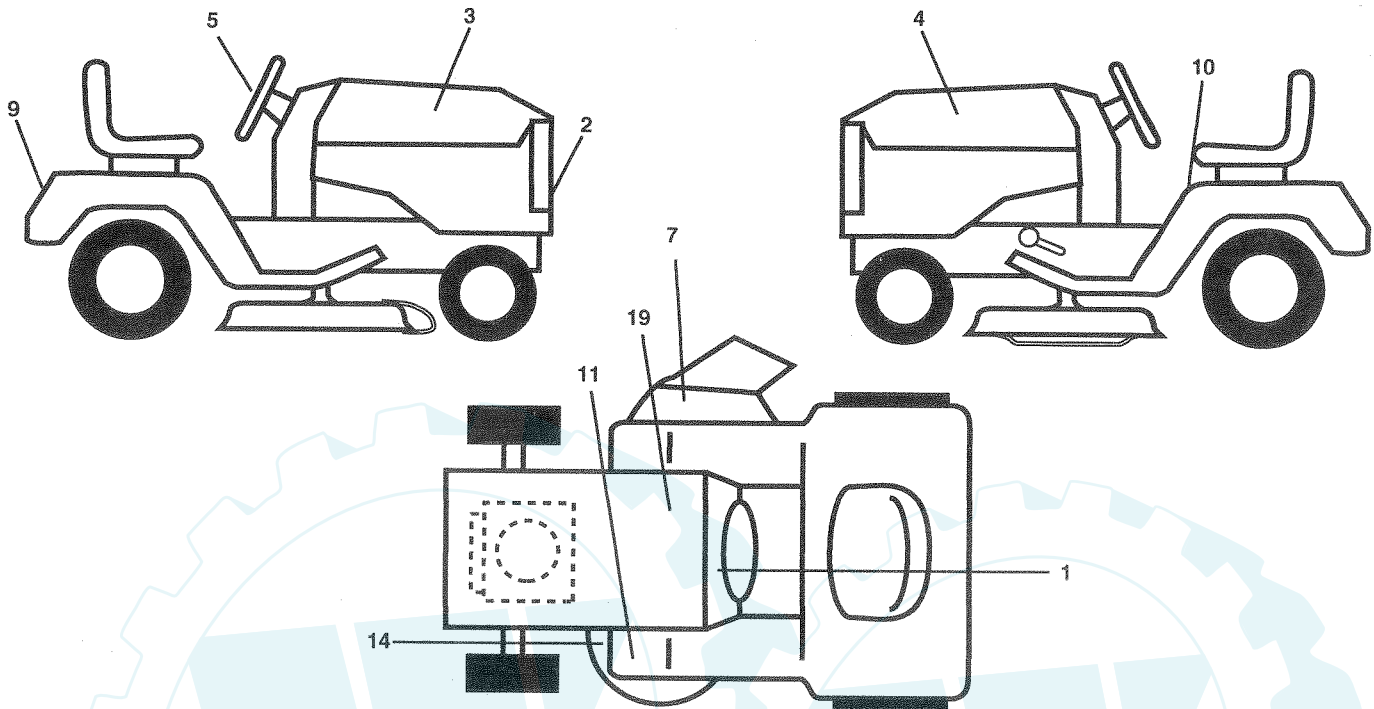
PTO SWITCH

POSITION	CIRCUIT
OFF	C + G
ON	C + F, B + E, A + D



REPAIR PARTS

20 HP 50" TRACTOR - MODEL NO. PP2050J (PP2050JA), PRODUCT NO. 954 00 52-71
DECALS



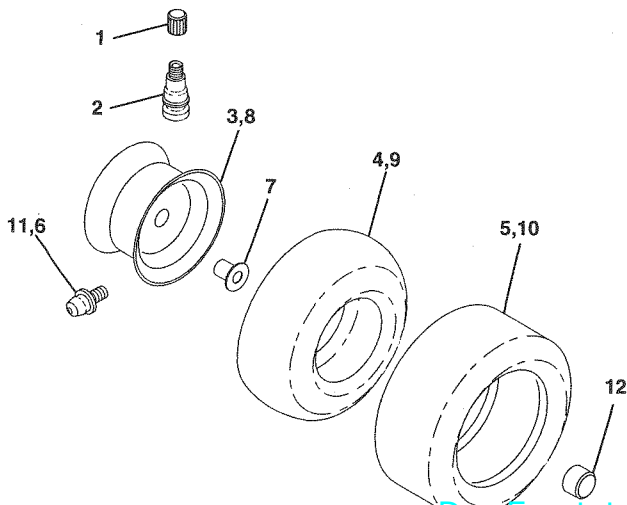
KEY NO.	PART NO.	DESCRIPTION
1	532138956	Decal, Operating Instruction
2	532127630	Decal, Grille
3	532142786	Decal, Hood, RH
4	532142787	Decal, Hood, LH
5	532137963	Decal, Insert Strg. Wheel
7	532137259	Decal, Warning Multi-Language
9	532133900	Decal, Fender
10	532133795	Decal, Caution
11	532101892	Decal, Clutch/Brake
14	532139346	Decal, V-Belt Schematic

KEY NO.	PART NO.	DESCRIPTION
19	532121549	Decal, Battery
--	532143833	Manual, Owner's (English)
--	532143834	Manual, Owner's (French)
--	532138311	Decal, Handle Lift Height Adjust (Lift Handle)

Accessories not included with tractor:

--	TR01	Grader Blade
--	TS20	8HP Tiller
--	TR72	48" Dozer Blade
--	GSB42	42" Snow Thrower
--	SH10	Sleeve Hitch
--	TA2151	AG Tires (Pair)

WHEELS & TIRES



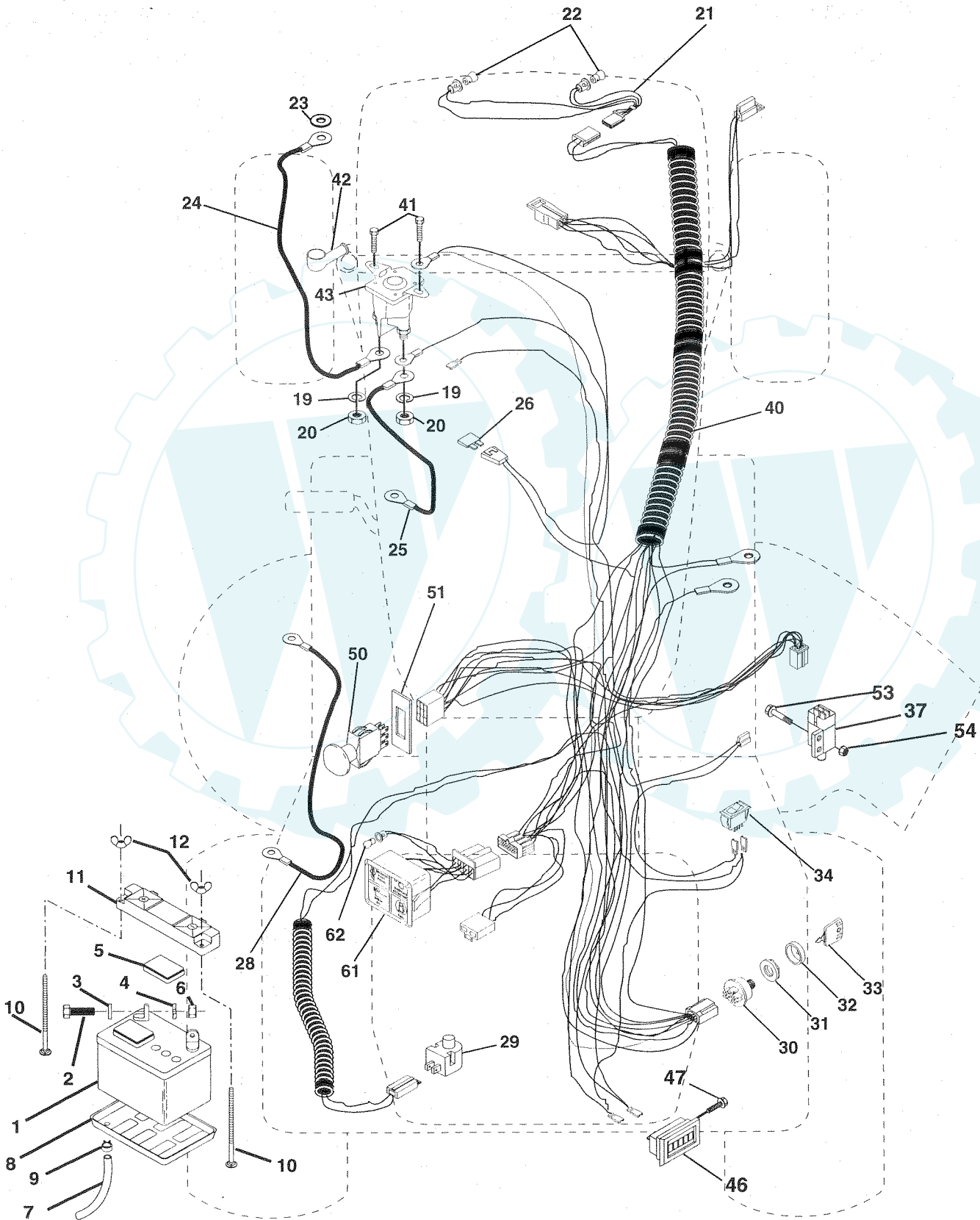
KEY NO.	PART NO.	DESCRIPTION
1	532059192	Cap, Valve, Tire
2	532065139	Stem, Valve
3	532144509	Rim Assembly, Front
4	532008134	Tube, Front (Service Item Only)
5	532106230	Tire, Front
6	532000278	Fitting, Grease
7	532124959	Bearing, Flange (Front Wheel Only)
8	532144510	Rim Assembly, Rear
9	532007154	Tube, Rear (Service Item Only)
10	532105588	Tire, Rear
11	532124860	Fitting, Grease
12	532104757	Cap, Hub

NOTE: All component dimensions given in U.S. inches
1 inch = 25.4 mm

REPAIR PARTS

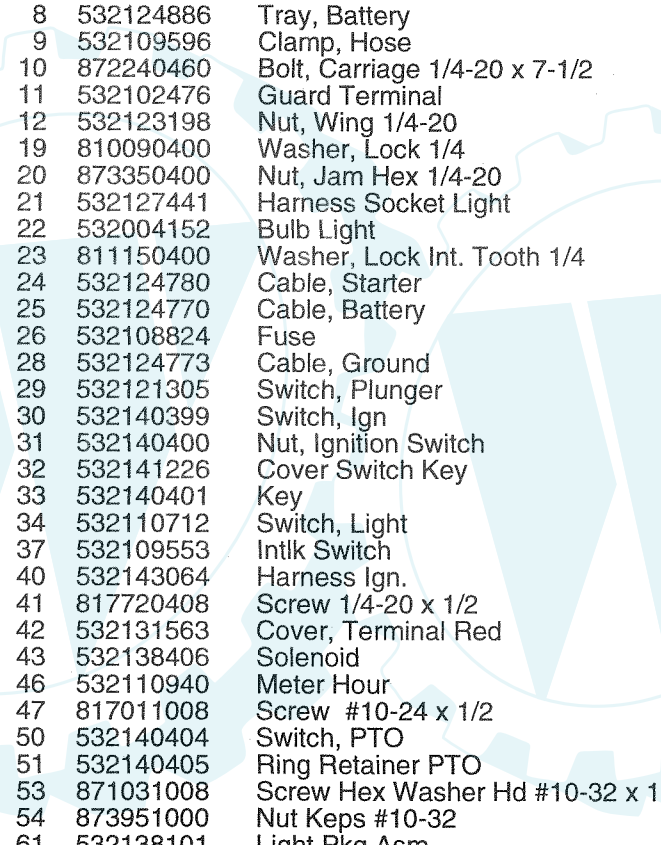
20 HP 50" TRACTOR - MODEL NO. PP2050J (PP2050JA), PRODUCT NO. 954 00 52-71

ELECTRICAL



REPAIR PARTS

20 HP 50" TRACTOR - MODEL NO. PP2050J (PP2050JA), PRODUCT NO. 954 00 52-71
ELECTRICAL



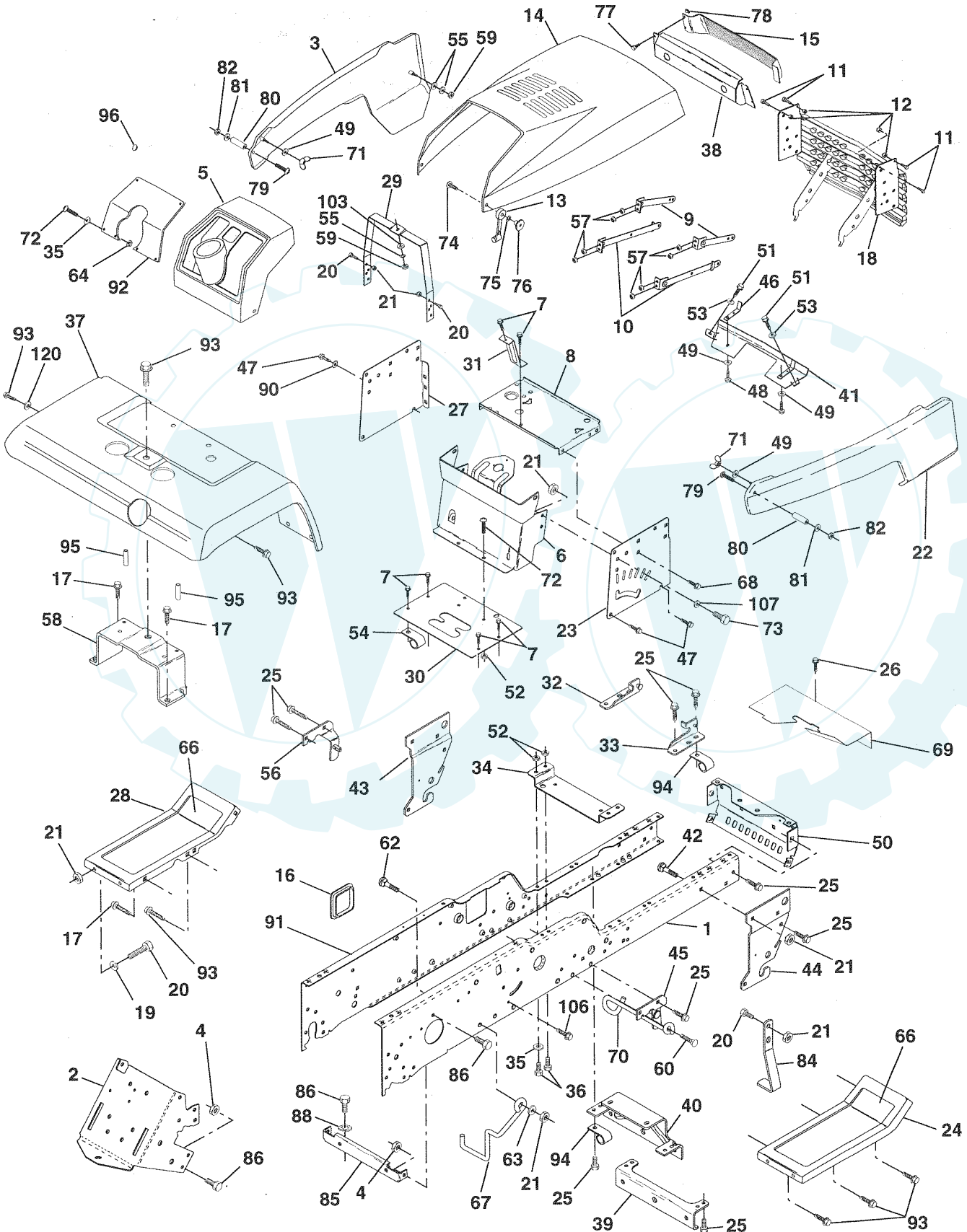
KEY NO.	PART NO.	DESCRIPTION
1	532121537	Battery
2	874760412	Bolt Hex Head 1/4-20 x 3/4
3	810040400	Washer, Lock 1/4
4	819091016	Washer 9/32 x 5/8 x 16 Ga
5	532121264	Caps, Battery
6	873220400	Nut Fin Hex 1/4-20
7	532007697	Tube Plastic
8	532124886	Tray, Battery
9	532109596	Clamp, Hose
10	872240460	Bolt, Carriage 1/4-20 x 7-1/2
11	532102476	Guard Terminal
12	532123198	Nut, Wing 1/4-20
19	810090400	Washer, Lock 1/4
20	873350400	Nut, Jam Hex 1/4-20
21	532127441	Harness Socket Light
22	532004152	Bulb Light
23	811150400	Washer, Lock Int. Tooth 1/4
24	532124780	Cable, Starter
25	532124770	Cable, Battery
26	532108824	Fuse
28	532124773	Cable, Ground
29	532121305	Switch, Plunger
30	532140399	Switch, Ign
31	532140400	Nut, Ignition Switch
32	532141226	Cover Switch Key
33	532140401	Key
34	532110712	Switch, Light
37	532109553	Intlk Switch
40	532143064	Harness Ign.
41	817720408	Screw 1/4-20 x 1/2
42	532131563	Cover, Terminal Red
43	532138406	Solenoid
46	532110940	Meter Hour
47	817011008	Screw #10-24 x 1/2
50	532140404	Switch, PTO
51	532140405	Ring Retainer PTO
53	871031008	Screw Hex Washer Hd #10-32 x 1
54	873951000	Nut Keps #10-32
61	532138101	Light Pkg Asm
62	532110143	Bulb, Light Pkg.

NOTE: All component dimensions given in U.S. inches
1 inch = 25.4 mm

REPAIR PARTS

20 HP 50" TRACTOR - MODEL NO. PP2050J (PP2050JA), PRODUCT NO. 954 00 52-71

CHASSIS AND ENCLOSURES



REPAIR PARTS

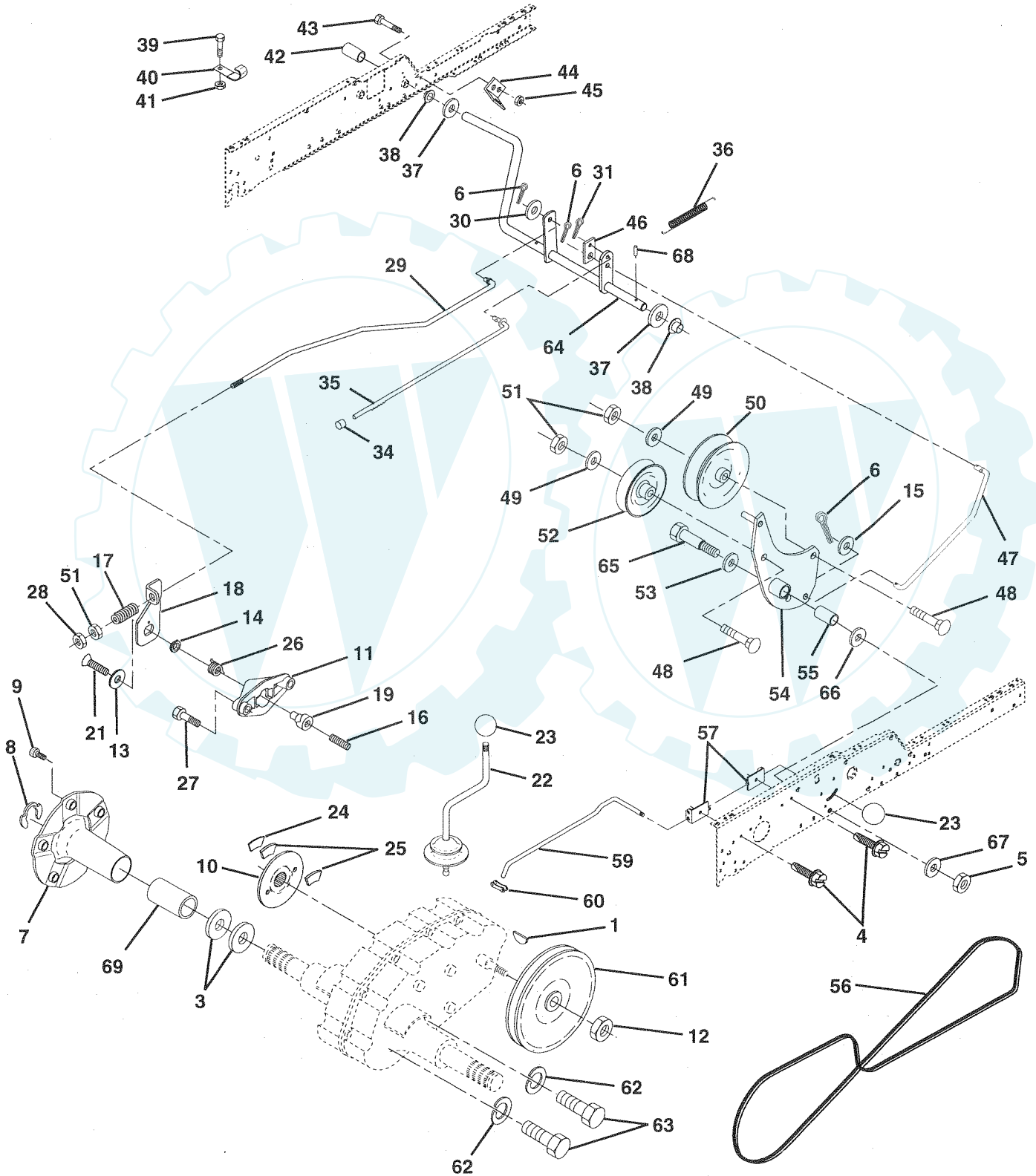
20 HP 50" TRACTOR - MODEL NO. PP2050J (PP2050JA), PRODUCT NO. 954 00 52-71
CHASSIS AND ENCLOSURES

KEY NO.	PART NO.	DESCRIPTION	KEY NO.	PART NO.	DESCRIPTION
1	532140505	Rail, Frame RH	49	819813210	Washer 13/32 x 3/4 x 10 Ga.
2	532140506	Drawbar, Gt	50	532136575	Bracket, Chassis Front
3	532144525	Panel Asm., Side LH	51	817490412	Screw, Hex 1/4-20 x 3/4
4	873800700	Nut, Lock Hex 7/16 Unc	52	873800500	Locknut, Hex W/Ins 5/16-18 Unc
5	532140398	Dash, Plastic Black	53	819091016	Washer 9/32 x 5/8 x 16 Ga.
6	532140638	Dash Asm., Lower	54	532126470	Clip, Insulated
7	817720408	Screw, Thd Cut 1/4-20 x 1/2	55	819091216	Washer 9/32 x 3/4 x 16 Ga.
8	532140229	Support, Battery	56	532138461	Bracket Asm., Susp Chassis Lh
9	532104618	Strap, Asm. Hinge Front	57	873510400	Nut, Keps Hex 1/4-20
10	532106784	Strap, Asm. Hinge Rear	58	532137113	Bracket Asm., Fender
11	532123481	Bolt Shoulder 1/4-20	59	873220400	Nut, Fin Hex 1/4-20
12	873800400	Nut, Lock W/Ins 1/4-20	60	817490620	Screw Thdrol 3/8-16 x 1-1/4
13	532109808	Latch, Chute Blk	62	872110608	Bolt, Carriage 3/8-16 x 1 Gr. 5
14	532144524	Hood Asm., Pnt	63	819131614	Washer 13/32 x 3/4 x 14 Ga.
15	532106395	Lens, Headlight Bar	64	873510500	Nut 5/16-18
16	532121794	Cover, Access	66	532133671	Pad, Footrest
17	817490612	Screw, Thdrol 3/8-16 x 3/4	67	532140737	Guide, Belt
18	532140037	Grille	68	817490508	Screw, Thdrol 5/16-18 x 1/2
19	819131312	Washer 13/32 x 13/16 x 12 Ga.	69	532140022	Shield, Heat
20	874760616	Bolt, Fin Hex 3/8-16 x 1	70	532137159	Guide, Belt Mid Span
21	873800600	Nut, Lock Hex W/Wsh 3/8-16 Unc	71	532123198	Nut, Plastic Locking Wing 1/4-20
22	532144526	Panel Asm., Side RH	72	874180512	Screw, Mach Trhd 5/16-18 x 3/4
23	532121045	Panel, Dash Side RH	73	874780616	Bolt, Fin Hex 3/8-16 x 1 Gr. 5
24	532124889	Footrest, RH	74	874191008	Screw, Machine #10-24
25	817490612	Screw, Thdrol 3/8-16 x 3/4	75	810071000	Washer, Lock #10
26	817490512	Screw, Thdrol 5/16-18 x 3/4	76	532125004	Nut, Weld #10-24
27	532121046	Panel, Dash Side LH	77	817211010	Screw, Hex Whd Tap #10-16 x 5/8
28	532124888	Footrest, LH	78	532104755	Fastner "J"
29	532124130	Bracket, Support Dash	79	874981020	Screw, Machine #10-24 x 1/4
30	532144451	Saddle, Silkscr Vgt	80	532007206	Spacer, Split
31	532137556	Brace, Support Steering	81	819070818	Washer 7/32 x 1/2 x 18 Ga.
32	532141315	Bracket Asm., Frame Pivot Lh	82	873731000	Nut #10-24
33	532141314	Bracket Asm., Frame Pivot Rh	84	532142992	Stop, Over Center Mower
34	532142131	Bracket, Engine Support Rear	85	532120404	Bracket, Support
35	819111116	Washer 11/32 x 11/16 x 16 Ga.	86	874760716	Bolt, Fin Hex 7/16-14 Unc x 1
36	874780512	Bolt, Fin Hex 5/16-18 x 3/4	88	810040700	Washer, Lock Hvy Hld Sp 7/16
37	532124998	Fender, Pnt.	90	811050600	Washer, Lock External Tooth 3/8
38	532124939	Bezel Asm.	91	532140504	Rail, Frame Lh
39	532136961	Bracket, Axle Front	92	532144522	Plate, Silkscreen Dash
40	532142132	Bracket, Support Axle/Engine	93	817490608	Screw, Thdrol 3/8-16 x 1/2
41	532124978	Strap, Pnt. Grille	94	532100207	Clip, Fuel Line
42	872140608	Bolt, Carriage 3/8-16 x 1	95	532105531	Push Nut, Nylon
43	532136939	Bracket, Spnsn Front Lh	96	532125085	Plug, Hole
44	532136940	Bracket, Spnsn Front Rh	103	810040400	Washer, Lock 1/4
45	532138460	Bracket Asm., Susp Chassis Rh	106	817580520	Screw Thdrol 5/16-18 x 1-1/4
46	532132644	Bracket, Grille	107	819131614	Washer 13/32 x 1 x 14 Ga.
47	817490608	Screw Thdrol 3/8-16 x 1/2	120	819131616	Washer 13/32 x 1 x 16 Ga.
48	817490512	Screw, Thdrol. 5/16-18 x 3/4			

NOTE: All component dimensions given in U.S. inches
1 inch = 25.4 mm

REPAIR PARTS

20 HP 50" TRACTOR - MODEL NO. PP2050J (PP2050JA), PRODUCT NO. 954 00 52-71
GROUND DRIVE



REPAIR PARTS

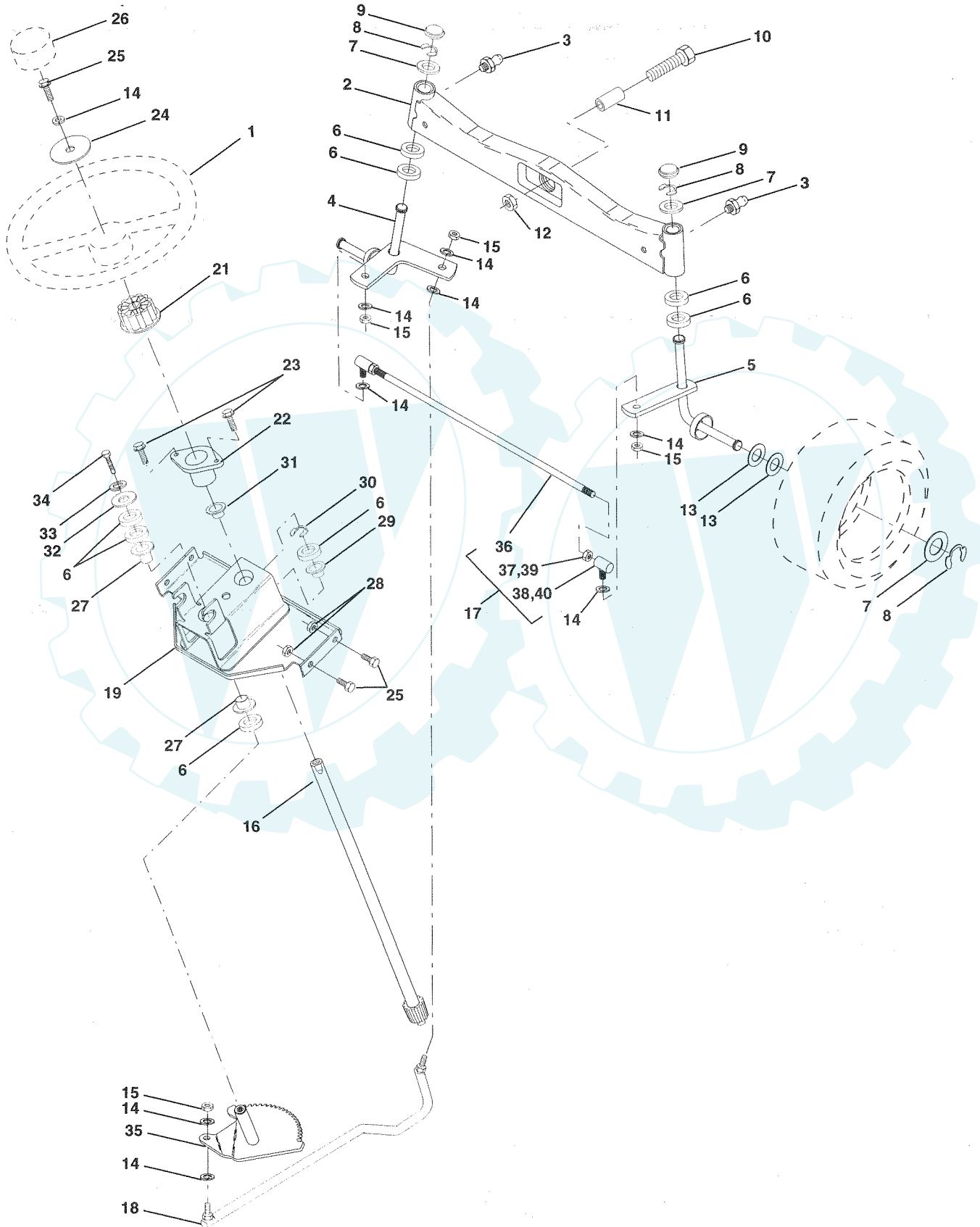
20 HP 50" TRACTOR - MODEL NO. PP2050J (PP2050JA), PRODUCT NO. 954 00 52-71
GROUND DRIVE

KEY NO.	PART NO.	DESCRIPTION	KEY NO.	PART NO.	DESCRIPTION
1	532124708	Key Woodruff	37	532121749	Washer 25/32 x 1-1/4 x 16 Gauge
3	532007563	Washer Thrust Axle Harden	38	532110895	Nyliner
4	872140506	Screw, Thdrol 5/16-18 x 1/2	39	874321016	Screw Fin #10-24 x 1
5	873680600	Nut Crownlock 3/8-16	40	532005304	Actuator Interlock Switch
6	876020412	Pin Cotter 1/8 x 3/4	41	873631000	Nut Lock #10-24
7	532135758	Wheel Hub Asm.	42	532123533	Cover Pedal
8	812000034	Ring Klip	43	874760412	Bolt Hex Head 1/4-20 x 3/4
9	532140080	Bolt Hub	44	532104601	Bracket Interlock
10	532143046	Disc Brake	45	873800400	Nut Lock W/Insert 1/4-20
11	532136927	Yoke Brake Disc	46	532121358	Retainer Spring
12	532009204	Locknut 1/2-20	47	532138228	Clutch Rod
13	532139419	Washer Special	48	872110614	Bolt Carriage 3/8-16 x 1-3/4 Gr 5
14	532138901	Bushing	49	819131413	Washer 13/32 x 7/8 x 13 Ga
15	819131316	Washer 13/32 x 13/16 x 16 Ga	50	532131494	Pulley Idler Flat
16	532143012	Set Screw 1/4-28 x 3/4	51	873800600	Nut Lock Hex 3/8-16
17	532126909	Spring	52	532139123	Pulley Idler Grooved
18	532137104	Lever Brake	53	532000207	Washer Hardtened
19	532136926	Cam Brake Disc	54	532138390	Clutch Arm Asm
21	823260412	Screw Flat Head 1/4-28 x 3/4	55	532105706	Bearing, Idler
22	532124863	Gearshift Lever Assembly	56	532137153	V-Belt
23	532121466	Knob	57	532141756	Bracket Shift Rod Hi-Lo
24	532136925	Support Puck Brake	59	532122253	Shift RodHi-Lo
25	532136923	Puck Brake Top	60	532122268	Spring Clip Connecting Link
26	532137552	Spring Return	61	532137524	Pullery Transaxle
27	817490528	Screw Hex Wsh Thd 5/16-18 x 1-3/4	62	810040700	Washer Lock 7/16
28	873350600	Nut Hex Jam 3/8-16	63	874760720	Bolt Fin Hex 7/16-14 x 1-1/4
29	532137213	Brake Rod	64	532137649	Shaft Clutch/Brake Pedal
30	819131614	Washer 13/32 x 1 x 14Ga	65	532067609	Bolt Shoulder
31	876020312	Pin Cotter 3/32 x 3/4	66	532140296	Washer Hardened
34	532071673	Cap Plunger	67	819131312	Washer 13/32 x 13/16 x 12 Ga.
35	532137648	Rod Parking Brake	68	532005142	Pin Roll
36	532138364	Spring Extension	69	532136327	Hub Cover

NOTE: All component dimensions given in U.S. inches
1 inch = 25.4 mm

REPAIR PARTS

20 HP 50" TRACTOR - MODEL NO. PP2050J (PP2050JA), PRODUCT NO. 954 00 52-71
STEERING ASSEMBLY



REPAIR PARTS

20 HP 50" TRACTOR - MODEL NO. PP2050J (PP2050JA), PRODUCT NO. 954 00 52-71
STEERING ASSEMBLY

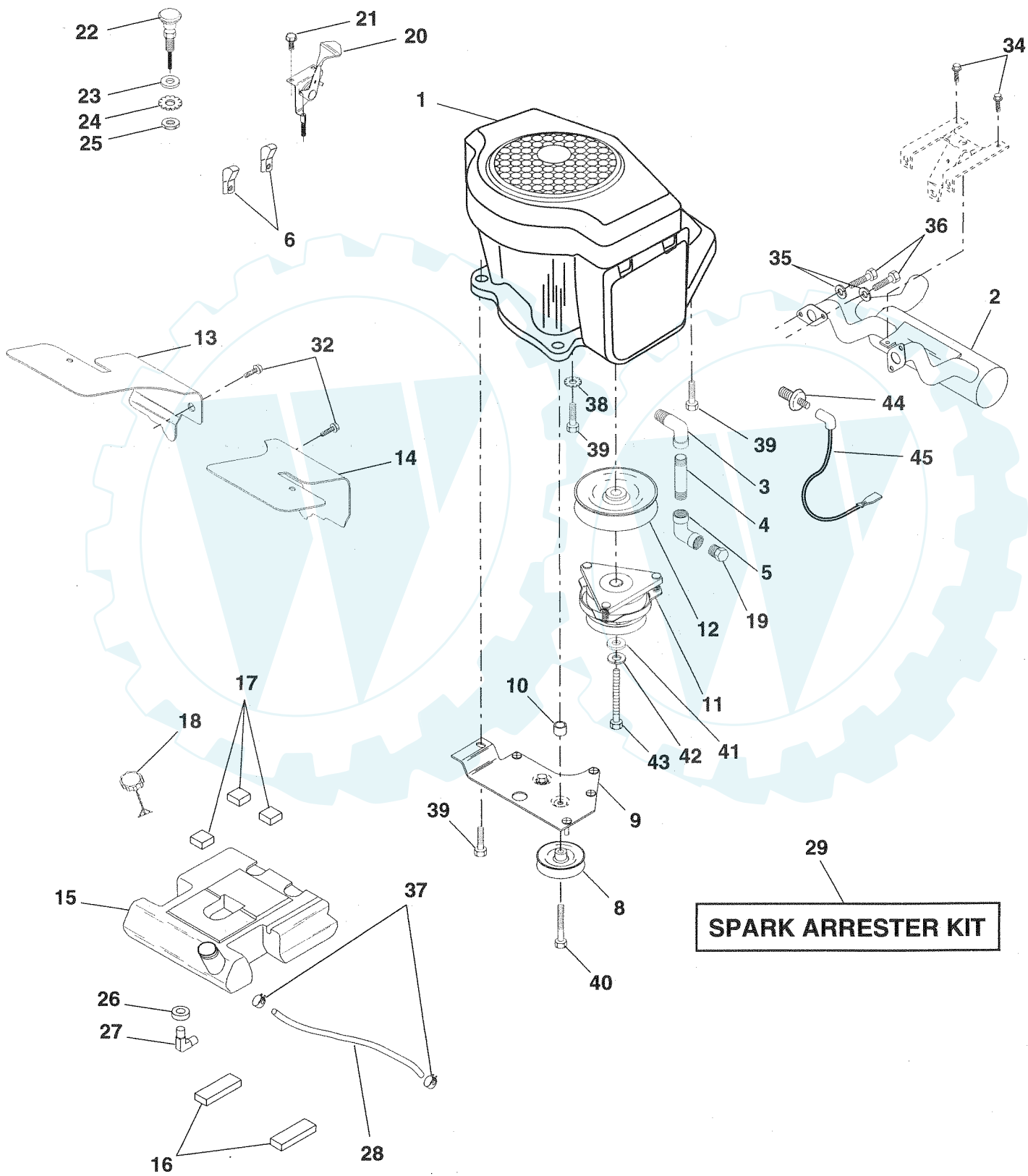
KEY NO.	PART NO.	DESCRIPTION
1	532121472	Wheel, Steering
2	532137094	Axle Asm., Front
3	532124836	Fitting, Grease
4	532136960	Spindle Asm, LH
5	532136959	Spindle Asm., RH
6	532124956	Bearing, Race Thrust Harden
7	532121748	Washer 25/32 x 1-5/8 x 16 Ga.
8	812000029	Ring, Klip #T5304-75
9	532121232	Cap, Spindle
10	874781044	Bolt, Fin Hex 5/8-11 x 2-3/4
11	532136518	Spacer, Brg. Axle Front
12	873901000	Nut, Lock Flange 5/8-11 Unc
13	532121749	Washer 25/32 x 1-1/4 x 16 Ga.
14	810040600	Washer, Lock Hvy Hlcl Spr 3/8
15	873610600	Nut, Fin Hex 3/8-24 Unf
16	532104591	Shaft Asm., Steering
17	532137347	Rod Asm., Tie Ball J Ball Vgt (Inc. Key No. 36-40)
18	532137155	Draglink, Ball Joint Solid Vgt
19	532138053	Support Asm., Steering Vgt
21	532100711	Adapter, Wheel Steering
22	532124720	Bushing, Strg. Blk
23	817431008	Screw, Slftp #10-16 x 1/2 Ty-b
24	819133808	Washer 13/32 x 2-3/8 x 8 Ga.
25	874780616	Bolt, Fin Hex 3/8-16 x 1 Gr. 5
26	532126805	Cap, Wheel Steering
27	532124937	Bearing, Col. Strg.
28	873800600	Nut, Lock Hex W/Wsh 3/8-16 Unc
29	532104239	Bearing, Flange
30	812000034	Ring, Klip Truarc #5304-75
31	532138136	Bushing, Nyliner Snap
32	819111610	Washer 11/32 x 1 x 10 Ga.
33	810040500	Washer, Lock Hvy Hlcl Spr 5/16
34	874760512	Bolt, Hex Hd 5/16-18 x 3/4
35	532138059	Gear, Sector Steering
36	532137156	Tie Rod
37	873360600	Jam Nut RH Thread
38	532109850	Joint Asm. Ball RH Thread
39	873700600	Jam Nut LH Thread
40	532109851	Joint Asm. Ball LH Thread

NOTE: All component dimensions given in U.S. inches
1 inch = 25.4 mm

REPAIR PARTS

20 HP 50" TRACTOR - MODEL NO. PP2050J (PP2050JA), PRODUCT NO. 954 00 52-71

ENGINE



REPAIR PARTS

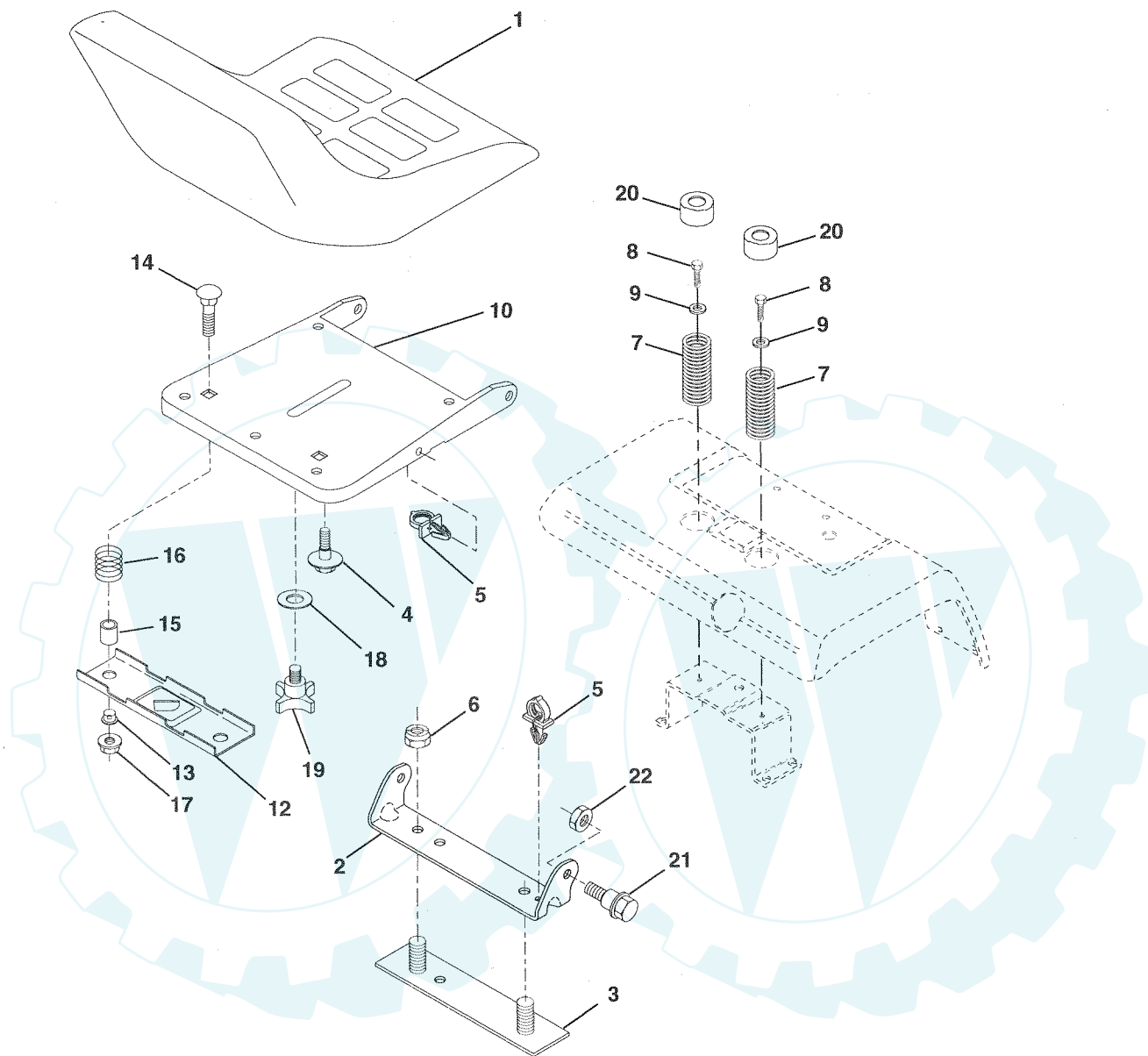
20 HP 50" TRACTOR - MODEL NO. PP2050J (PP2050JA), PRODUCT NO. 954 00 52-71
ENGINE

KEY NO.	PART NO.	DESCRIPTION
1	-----	Engine Kohler, Model No. MV20S
2	532139214	Muffler Asm Kohler VGT (Inc. Key No. 34)
3	813240300	Elbow Street 3/8 NPT
4	813280328	Nipple Pipe 3/8NPT X 3 - 1/2
5	813200300	Elbow STD 90 Degree 3/8 - 18 NPT
6	532138129	Clamp Tube Double Engine
8	532121361	Pulley V-Idler
9	532138559	Stop Keeper Asm VGT
10	532105432	Bushing
11	532137140	Clutch Electric
12	532136907	Pulley Engine VGT Elect Clutch
13	532138486	Baffle Air LH Koh VGT
14	532138487	Baffle Air RH Koh VGT
15	532141069	Tank Fuel W/Sym Vented
16	532109227	Pad Spacer
17	532106082	Pad Spacer
18	532140527	Cap Asm Fuel W/Sym Vented
19	813290300	Plug Oil Drain (Order From Engine Manufacturer)
20	532142168	Control Throttle
21	817720410	Screw Hex Thd Cut 1/4 - 20 X 5/8
22	532138672	Control Choke
23	819131316	Washer 13/32 X 13/16 x 16 Ga
24	811050600	Washer Ext Tooth 3/8
25	873610600	Nut Fin Hex 3/8 - 24 UNF
26	532124952	Bushing
27	532139277	Stem Tank Fuel
28	532124703	Fuel Line
29	532132920	Spark Arrester Kit
32	817490508	Screw Thdrol 5/16 - 18 X 1/2
34	817720408	Screw Thd Cut 1.4 - 20 x 1/2
35	810040500	Washer Lock 5/16
36	874570512	Screw Hex 5/16 - 16 UNC X 3/4
37	532123487	Clamp Hose
38	811050600	Lockwasher Ext Tooth 3/8
39	817490624	Screw Thdrol 3/8 - 16 X 1 - 1/2 TT
40	817490652	Screw Thdrol 3/8 - 16 X 3 - 1/4
41	532126197	Washer 1-1/2 OD X 15/32 ID X .250
42	810040700	Washer Lock 7/16
43	871170768	Bolt Hex 7/16-20 X 4-1/4 Ga 5
44	532142320	Switch, Engline Oil Pressure
45	532142321	Wire, Lead Sentry Kohler

NOTE: All component dimensions given in U.S. inches
1 inch = 25.4 mm

REPAIR PARTS

20 HP 50" TRACTOR - MODEL NO. PP2050J (PP2050JA), PRODUCT NO. 954 00 52-71
SEAT ASSEMBLY



KEY NO.	PART NO.	DESCRIPTION
1	532127440	Seat
2	532140551	Bracket, Pivot Seat
3	532140675	Strap, Fender
4	532127018	Bolt, Shoulder 5/16-18 X .62
5	532140407	Clip, Push In
6	873800600	Loicknut 3/8-16 Unc
7	532124181	Spring, Seat Cprsn
8	817490508	Screw, Thdrol 5/16-18 X 1/2
9	819131614	Washer 13/32 X 1 X 14 Ga.
10	532140552	Pan, Seat
12	532121246	Bracket, Mounting Switch
13	532121248	Bushing, Snap

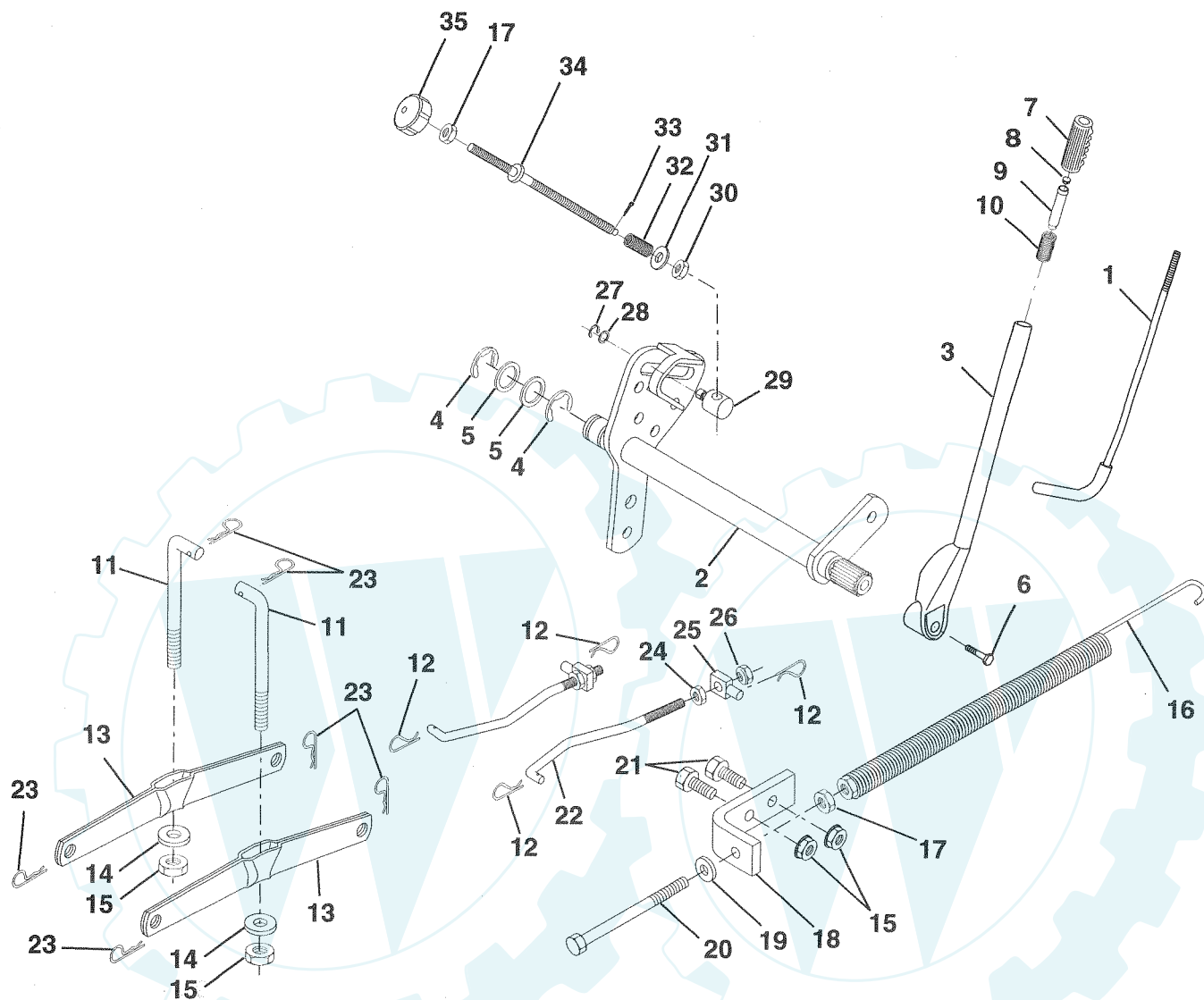
KEY NO.	PART NO.	DESCRIPTION
14	872050411	Bolt, Carriage 1/4-20 X 1-3/8
15	532121249	Spacer, Split
16	532123740	Spring, Cprsn
17	532123976	Nut, Lock 1/4 Lge Flg Gr. 5
18	819171912	Washer 17/32 X 1-3/16 X 12 Ga.
19	532120068	Knob, Seat 1/2-13 Unc
20	532124238	Cap, Spring Seat
21	532139888	Bolt, Shoulder 5/16-18 Unc
22	873680500	Nut, Crownlock 5/16-18 Unc

NOTE: All component dimensions given in U.S. inches
1 inch = 25.4 mm

REPAIR PARTS

20 HP 50" TRACTOR - MODEL NO. PP2050J (PP2050JA), PRODUCT NO. 954 00 52-71

LIFT ASSEMBLY



KEY NO.	PART NO.	DESCRIPTION
1	532121006	Rod Asm., Lever
2	532137295	Shaft Asm., Lift Vgt
3	532121002	Lever Asm., Lift Rh
4	812000022	E-Ring Truarc #5133-87
5	819292016	Washer 29/32 x 1-1/4 x 16 Ga.
6	874780624	Bolt, Fin Hex 3/8-16 x 1-1/2
7	532109413	Grip, Handle Bicycle
8	532124526	Button, Plunger
9	532122364	Plunger, Lever Lift
10	532124874	Spring 2-1/8"
11	532142369	Link Lift
12	532124660	Retainer, Spring
13	532139867	Arm, Suspension Vgt
14	532140302	Bearing
15	873800600	Nut, Lock Hex W/Wsh 3/8-16 Unc
16	532124687	Spring Asm., Assist Lift
17	873350600	Nut, Hex Jam 3/8-16 Unc
18	532143363	Bracket, Spring Assist

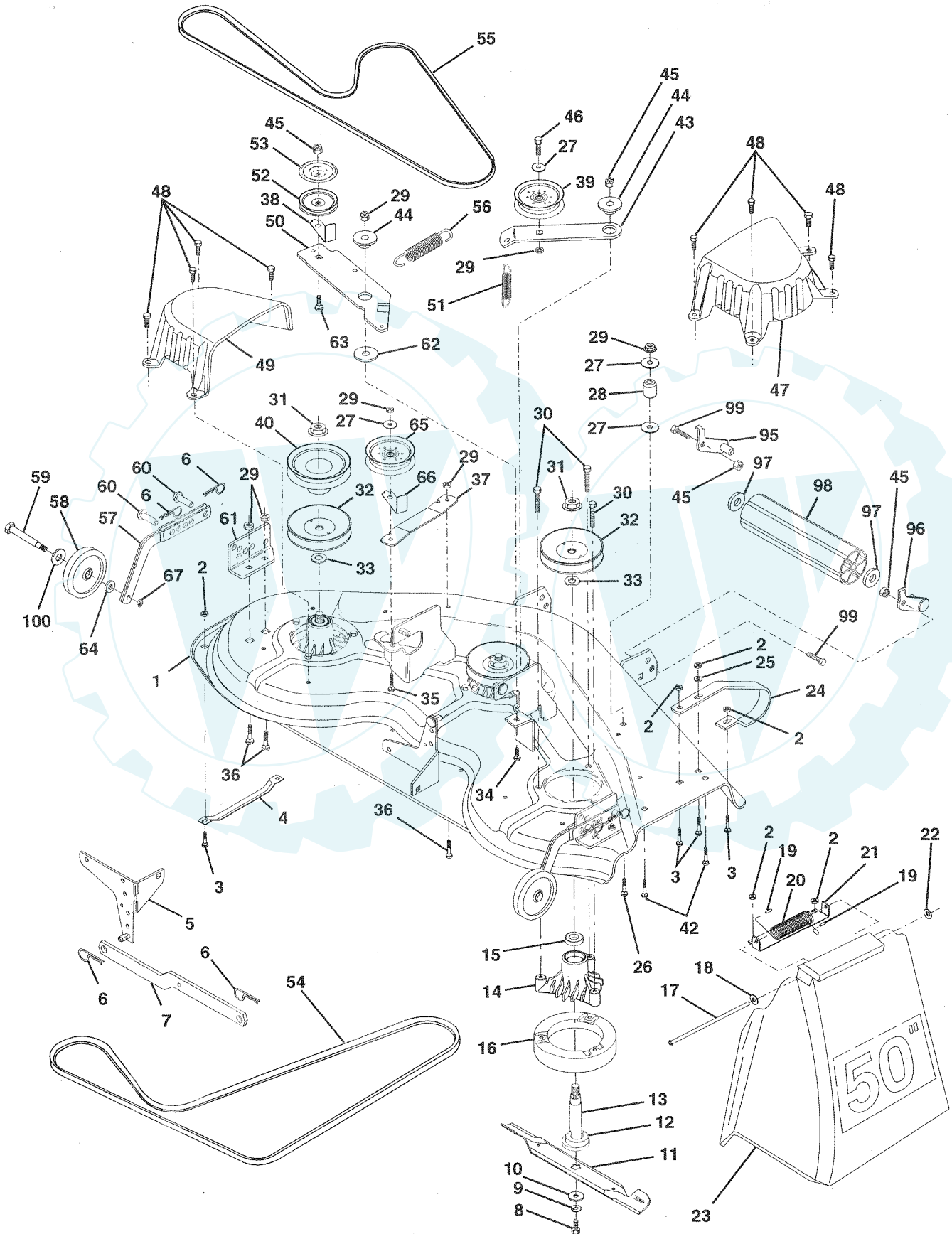
KEY NO.	PART NO.	DESCRIPTION
19	819131316	Washer 13/32 x 13/16 x 16 Ga.
20	532005328	Bolt, Adjust Spring Assist
21	874760616	Bolt, Fin Hex 3/8-16 x 1
22	532127218	Link, Front
23	532124670	Retainer, Spring
24	873350800	Nut, Jam Hex 1/2-13 Unc
25	532130171	Trunnion
26	873800800	Nut, Lock W/Wsh 1/2-13 Unc
27	812000037	Ring, Klip #T5304-37
28	819151216	Washer 15/32 x 3/4 x 16 Ga.
29	532110810	Trunnion, Dp Stop Dbl Thds Plt
30	532110807	Nut, Special
31	819131016	Washer 13/32 x 5/8 x 16 Ga.
32	532137150	Spring, Compression Inf Hgt
33	876020308	Pin, Cotter 3/32 x 1/2
34	532137167	Rod, Adj Lift
35	532138057	Knob, Inf 3/8-16 Unc

NOTE: All component dimensions given in U.S. inches

Der Ersatzteilspezialist in Internet

REPAIR PARTS

20 HP 50" TRACTOR - MODEL NO. PP2050J (PP2050JA), PRODUCT NO. 951 00 52-71
MOWER DECK



REPAIR PARTS

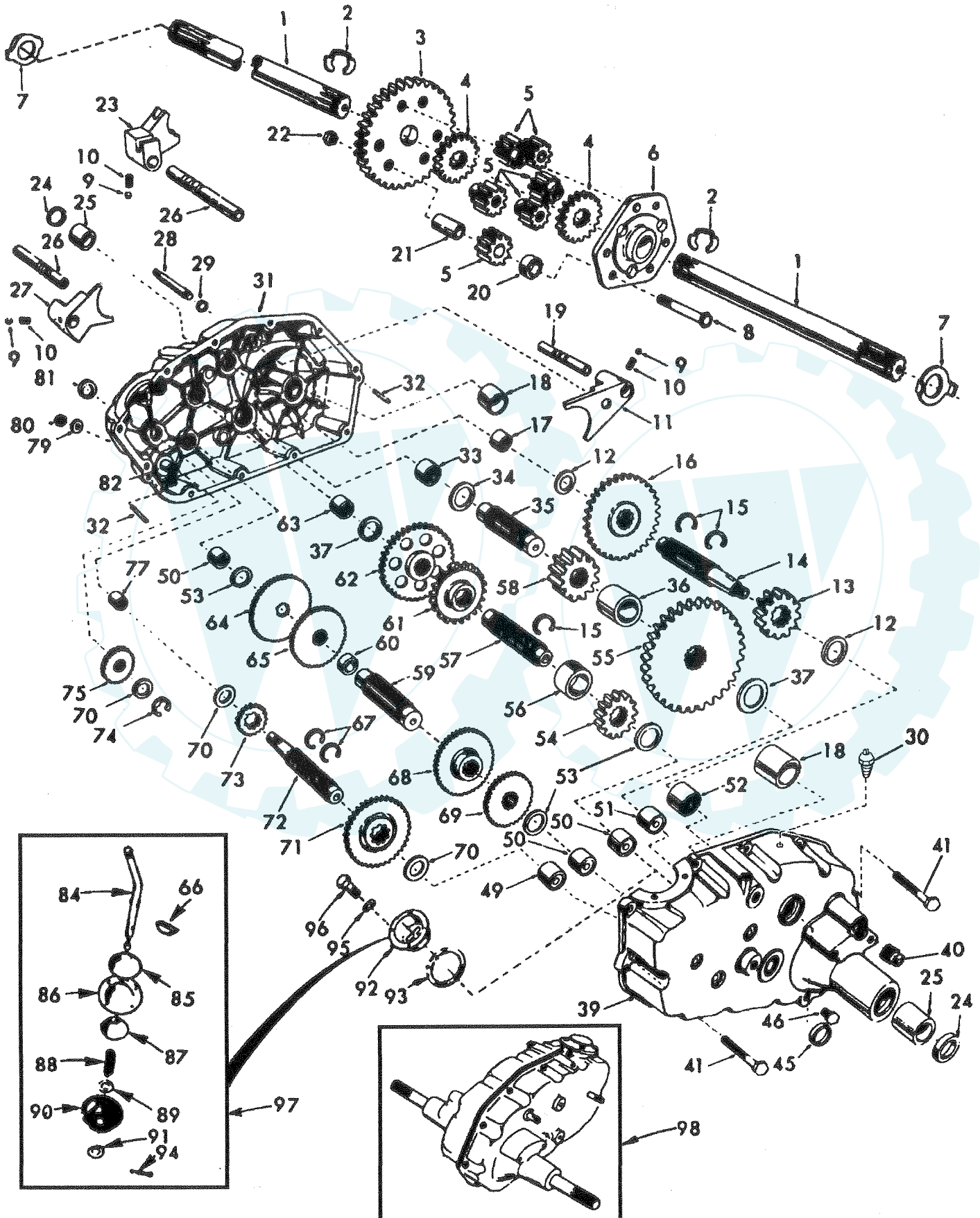
20 HP 50" TRACTOR - MODEL NO. PP2050J (PP2050JA), PRODUCT NO. 951 00 52-71
MOWER DECK

KEY NO.	PART NO.	DESCRIPTION	KEY NO.	PART NO.	DESCRIPTION
1	532136457	Deck Asm., Mower 50" Vented	39	532131494	Pulley, Idler Flat
2	873800500	Locknut, Hex W/Ins 5/16-18 Unc	40	532136572	Pulley, Driven
3	872110506	Bolt, Carriage 5/16-18 x 3/4	42	872140506	Bolt, Carriage 5/16-18 Unc x 3/4
4	532125074	Runner, Mower LH	43	532136460	Arm, Idler Secondary
5	532138457	Bracket Asm., Sway Bar	44	532122052	Spacer, Retainer
6	532124670	Retainer, Spring	45	873680600	Nut, Crownlock 3/8-16 Unc
7	532130832	Arm Suspension, Rear	46	874760628	Bolt, Fin Hex 3/8-16 Unc x 1-3/4
8	532850857	Bolt 3/8-24 x 1.25 Gr. 8 Patched	47	532137200	Cover, Mandrel RH
9	810030600	Washer, Lock Hvy 3/8 Unplated	48	532137729	Screw, Thd Roll 1/4-20 x 5/8
10	532140296	Washer, Hard Blade Mower Vented	49	532136574	Cover, Mandrel LH
11	532137380	Blade (3 Required)	50	532137272	Arm, Idler Primary
12	532129895	Bearing, Ball #6204 (Mandrel)	51	532137273	Spring, Secondary
13	532137553	Shaft Asm., W/Lower Brg (Includes Key No. 12)	52	532139245	Pulley, Idler V Groove
14	532137152	Housing, Mandrel 50" Vent	53	532137789	Shield, Idler
15	532110485	Bearing, Ball Mandrel	54	532139573	V-Belt, Mower Primary
16	532140329	Stripper, Mower Vented	55	532138255	V-Belt, Mower Secondary
17	532106735	Rod, Hinge	56	532138687	Spring, Primary
18	819111016	Washer 11/32 x 5/8 x 16 Ga.	57	532136577	Bar Asm., Wheel Gauge
19	532105304	Cap, Sleeve	58	532105455	Wheel, Gauge
20	532123713	Spring, Torsion Deflector	59	532124842	Bolt, Shoulder
21	532137607	Bracket, Deflector	60	532139031	Pin, Clevis
22	532110452	Nut, Push	61	532136573	Bracket, Wheel Gauge
23	532110509	Shield, Deflector Mower	62	532133943	Washer Hardened
24	532136320	Runner, RH	63	872110612	Bolt Carriage 3/8-16 x 1-1/2
25	819111216	Washer 11/32 x 3/4 x 16 Ga.	64	819121414	Washer 3/8 x 7/8 x 14 Ga.
26	872110614	Bolt, Carriage 3/8-16 x 1-3/4 Gr. 5	65	532102403	Pulley Idler Flat Mower
27	819131316	Washer 13/32 x 13/16 x 16 Ga.	66	532139622	Keeper, Belt Idler 50" Vent
28	532132823	Spacer, Spring Stop Idler	67	873930600	Nut, Center Lock 3/8-16
29	873800600	Nut, Lock Hex W/Wsh 3/8-16 Unc	96	532132273	Bracket, Asm. Noseroller RH
30	532138776	Screw Thdrol Hex Head	95	532132274	Bracket, Asm. Noseroller LH
31	532137266	Nut, Flg Top Lock Cntr 9/16	97	819171416	Washer 17/32 x 7/8 x 16 Ga.
32	532129861	Pulley, Mandrel	98	532132264	Roller, Nose
33	532129963	Washer, Spacer Mower Vented	99	874760616	Bolt, Fin Hex 3/8-16 x 1
34	872140610	Bolt, Carriage 3/8-16 x 1-1/4	100	819171512	Washer 17/32 x 15/16 x 12 Ga.
35	872110616	Bolt, Carriage 3/8-16 x 2	--	532143651	Mandrel Asm. Service (Includes Key Nos. 8-10, 12-15, 31, and 33)
36	872110608	Bolt, Carriage 3/8-16 x 1 Gr. 5	--	532141051	Mower Asm. Service (Std. Deck - Order separately all nose roller and gauge wheel components)
37	532137166	Stiffener, Arm Idler			
38	532137554	Keeper, Belt Idler			

NOTE: All component dimensions given in U.S. inches
1 inch = 25.4 mm

REPAIR PARTS

20 HP 50" TRACTOR - MODEL NO. PP2050J (PP2050JA), PRODUCT NO. 954 00 52-71
TRANSAXLE



REPAIR PARTS

20 HP 50" TRACTOR - MODEL NO. PP2050J (PP2050JA), PRODUCT NO. 954 00 52-71

TRANSAXLE

KEY PART NO. NO.	DESCRIPTION	KEY PART NO. NO.	DESCRIPTION
1	532124662 Axle Shaft	52	532008119 Needle Bearing
2	812000034 Retaining Ring	53	532004220 Thrust Bearing Race
3	532004199 Final Drive Gear	54	532004209 3rd Reduction Pinion, Low
4	532004216 Differential Gear	55	532124668 4th Reduction Gear
5	532004215 Differential Pinion	56	532004442 3rd Reduction Pinion Spacer
6	532004217 Differential Carrier	57	532004195 2nd Reduction Gear Shaft
7	532124674 Axle Thrust Washer	58	532004214 Final Drive Pinion
8	874020652 Bolt, Hex Head 3/8-24 x 3-1/4 (1" Thread Length)	59	532004194 1st Reduction Gear Shaft
9	532124697 Steel Ball	60	532007528 1st Reduction Shaft Spacer
10	532137261 Spring Shift Fork Detent	61	532124666 3rd Reduction Pinion Hlgh
11	532004985 Shift Fork, High-Low Range	62	532124665 2nd Reduction Gear
12	532124931 Thrust Bearing Race	63	532007398 Needle Bearing
13	532124667 4th Reduction Pinion	64	532124664 Low Speed Gear and 2nd Reduction Pinion Cluster
14	532137125 3rd Reduction Gear Shaft	65	532004204 Reverse Gear
15	532124677 Snap Ring, Crescent Type	66	532002898 Key, Hi-Pro 1/8 x 17/32
16	532124679 High-Low Range Gears	67	812000033 Snap Ring, Crescent Type
17	532008118 Needle Bearing	68	532004205 Intermediate Speed Gear
18	532124705 Sintered Iron Bearing	69	532125099 High Speed Gear
19	532122238 Shift Fork Shaft, High-Low Range	70	532001370 Thrust Bearing Race
20	532004218 Differential Pinion Spacer	71	532124681 Intermediate and High Speed Cluster Pinions
21	532124673 Differential Pinion Bushing	72	532139120 Input Shaft
22	532124701 Gripco Centerlock Nut 3/8-24	73	532004201 Low Speed Pinion
23	532006262 Shift Fork, R.H.	74	812000008 E-Ring
24	532124698 Oil Seal	75	532001153 Reverse Idler Gear
25	532124709 Sintered Iron Bearing	77	532006803 Needle Bearing
26	532139111 Shift Fork Shaft	79	532001167 Sealing Washer
27	532004986 Shift Fork, L.H.	80	873360700 Nut, Hex, Jam 7/16-20
28	532122254 Shift Shaft, High-Low Range	81	532124675 Oil Seal
29	532006269 Oil Seal	82	532136984 Reverse Idler Shaft
30	532005855 Pressure Relief Valve	84	532005384 Gearshift Lever, Bent
31	532139538 Gearcase, Reverse Idler Shaft and Bearings, R.H. (Includes Key No.'s 17,18, 25, 33, 50, 63, 77 and 82)	85	532002978 Gearshift Cap
32	532006277 Dowel Pin	86	532124682 Gearshift Ball Cover and Pin
33	532004225 Needle Bearing	87	532124704 Shift Lever Guide Ball, Keyed
34	532007396 Thrust Bearing Race	88	532004924 Spring
35	532004198 4th Reduction Gear Shaft	89	819151516 Washer 15/32 x 15/16 x 16 Gauge
36	532124663 4th Reduction Gear Spacer	90	532110542 Shift Mechanism Seal
37	532007395 Thrust Bearing Race	91	819181511 Washer 9/16 x 15/16 x 12 Gauge
39	532139536 Gearcase and Bearings, L.H. (Includes Key Numbers 18, 25, 49, 50 (2), 51 and 52)	92	532000075 Gearshift Gate and Reinforcement
40	813320400 Pipe Plug 1/2-14 N.P.T.	93	532006274 Shift Ball Cover Gasket
41	817580520 Bolt, Hex 5/16-18 UNC x 1-1/4	94	876020412 Cotter Pin 1/8 x 3/4
45	532006271 Oil Seal	95	810040500 Washer, Lock 5/16
46	813060200 Pipe Plug 1/4-18 N.P.T.	96	874760514 Bolt, Hex Head 5/16-18 UNC x 7/8
49	532124792 Needle Bearing	97	532124863 Gear Shift Lever Assembly
50	532004222 Needle Bearing	98	532140332 Transaxle Assembly (Less Brake Drum and Shift Lever)
51	532001529 Needle Bearing		

NOTE: All component dimensions given in U.S. inches
1 inch = 25.4 mm