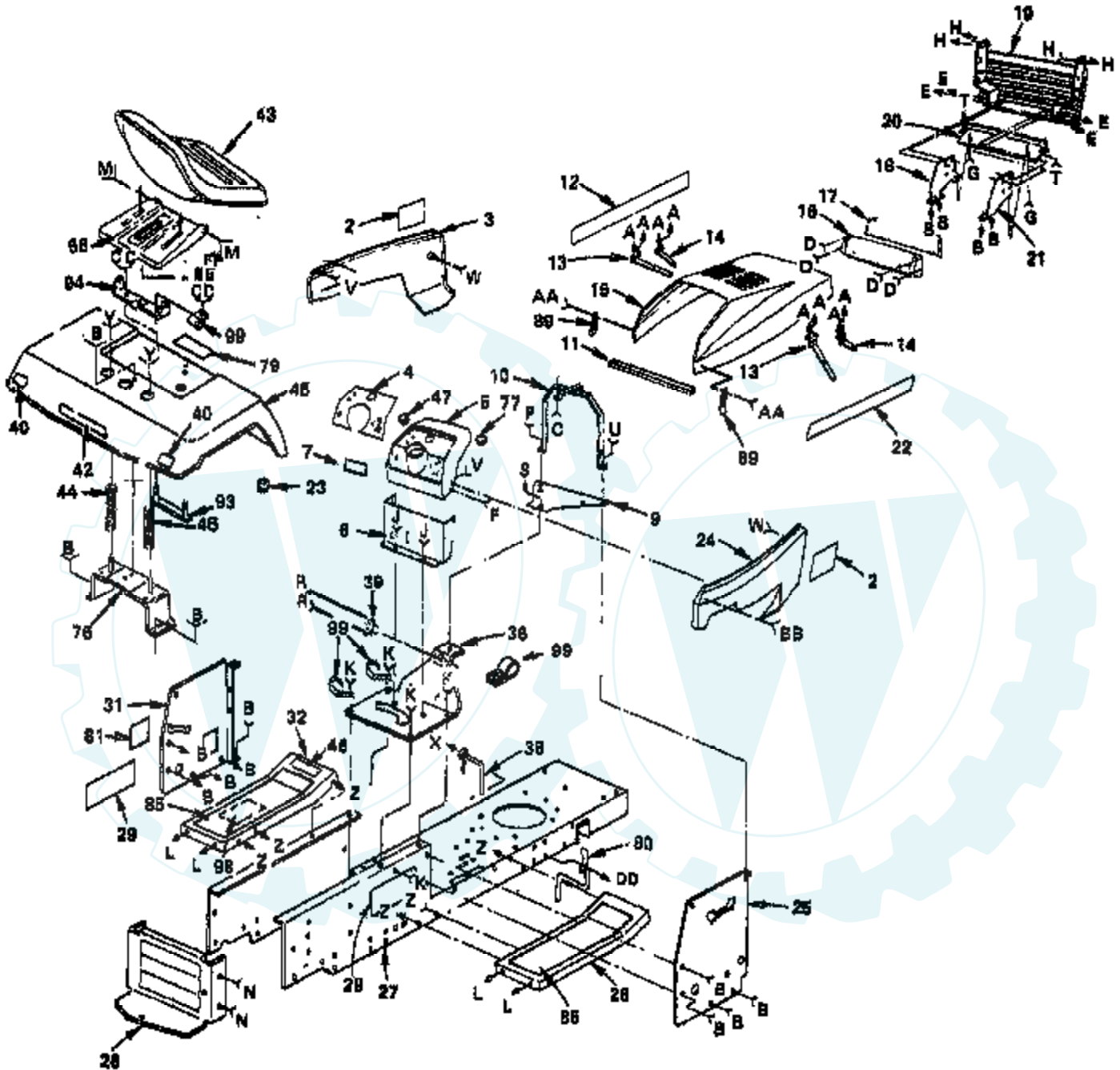


### ROPER LAWN TRACTOR--MODEL NUMBER LT110GR

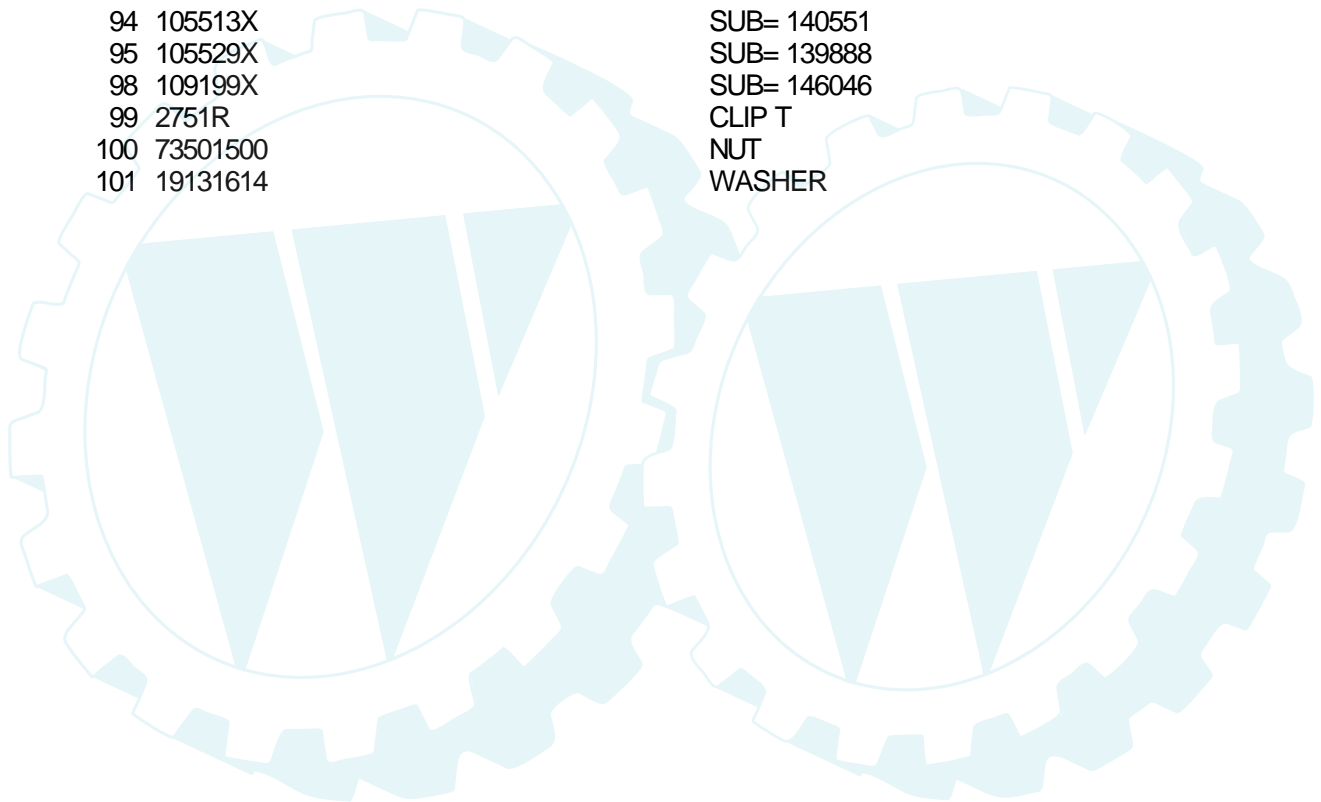
#### ENCLOSURES



- |   |   |   |   |   |   |   |   |   |   |   |   |   |   |   |   |   |   |   |  |
|---|---|---|---|---|---|---|---|---|---|---|---|---|---|---|---|---|---|---|--|
| A | B | C | D | E | F | G | H | J | K | L | M | N | P | R | S | T | U | V |  |
|   |   |   |   |   |   |   |   |   |   |   |   |   |   |   |   |   |   |   |  |
|   |   |   |   |   |   |   |   |   |   |   |   |   |   |   |   |   |   |   |  |
|   |   |   |   |   |   |   |   |   |   |   |   |   |   |   |   |   |   |   |  |
|   |   |   |   |   |   |   |   |   |   |   |   |   |   |   |   |   |   |   |  |
|   |   |   |   |   |   |   |   |   |   |   |   |   |   |   |   |   |   |   |  |

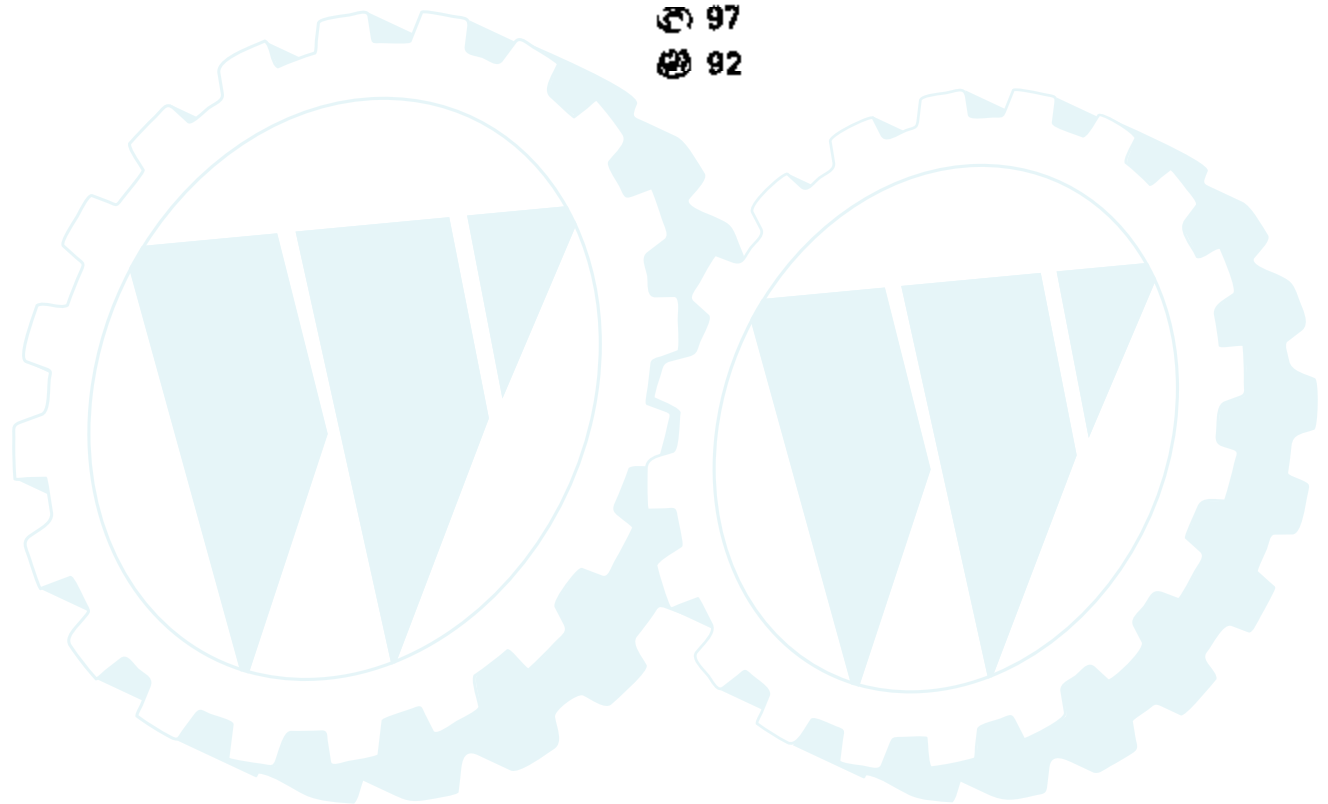
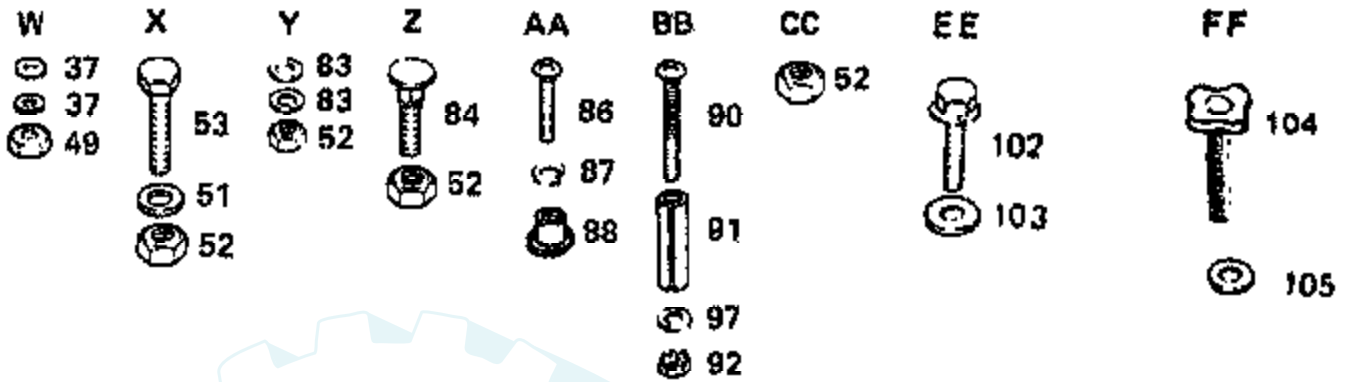
Ref #	Part Number	Qty	Description
1	10040400		LOCKWASHER
2	104806X		NLA
3	108442X388		SUB= 132637X505
4	108676X		DECAL-DASH
5	108679X		DASHBOARD T
6	104783X		DASH ASSY LT
7	108456X		SUB= 138955
9	106965X		SUB= 140181
10	104786X		SUPPORT ASSY LT
11	105037X		FOAM-STRIP LT
12	104643X		NLA
13	106784X		SUB= 155013
14	104618X		SUB= 155013
15	108370X388		SUB= 150301X505
16	104613X		SUB= 147717
17	106395X		LENS LT
18	104632X		SUPPORT-GRILL LT
19	104801X		NLA
20	104634X388		SUB= 105419X388
21	104633X		NLA
22	104644X		NLA
23	109641X		GROMMET T
24	109613X388		SUB= 132636X505
25	106976X		PANEL DASH RH YT
26	105464X388		FOOTREST-R.H.
27	109512X		CHASSIS T
28	102481X		SUB= 145009
29	104808X		NLA
31	106966X		PANEL DASH HYT
32	105465X388		FOOTREST LH YT
34	73680500		SUB= 73690500
36	108263X015		SADDLE
37	19091216		WASHER PM
38	106301X		SUB= 121440X
39	1554J		SUB= 155108
40	106202X		REFLECTOR-TAIL YT
42	104810X		NLA
43	110839X		SUB= 140119
44	121068X		SPRING T
45	109640X388		FENDER
46	4900J		DECAL T
47	8022J		PLUG-DASH T
48	121067X		SPRING T
49	73220400		SUB= 50675
50	74760612		SUB= 74780612
51	19131312		WASHER
52	73680600		SUB= 73690600
53	74760616		BOLT
55	17211010		SCREW LT
56	104755X		"" J"" FASTENER LT"
57	17490612		SCREW
59	17490512		SCREW
60	7605J		BOLT T
62	73680400		SUB= 73690400
63	74760620		SUB= 74780620
64	73510600		NUT
65	17490608		SCREW LT
66	121069X		SUB= 155925

Ref #	Part Number	Qty	Description
67	17490612		SCREW
72	17431008		SUB= 98000165
73	74780512		BOLT
74	73510500		NUT
75	105509X		SUB= 137113
76	74180512		SCREW
77	5479J		PLUG BUTTON T
78	17490412		SCREW HEX CRT
79	106974X		SUB= 133796
80	106300X		SUB= 121441X
81	105505X		SUB= 121794X
85	109864X		SUB= 108256X
89	109808X		HOOD LATCH T
93	105511X		SUB= 140675
94	105513X		SUB= 140551
95	105529X		SUB= 139888
98	109199X		SUB= 146046
99	2751R		CLIP T
100	73501500		NUT
101	19131614		WASHER

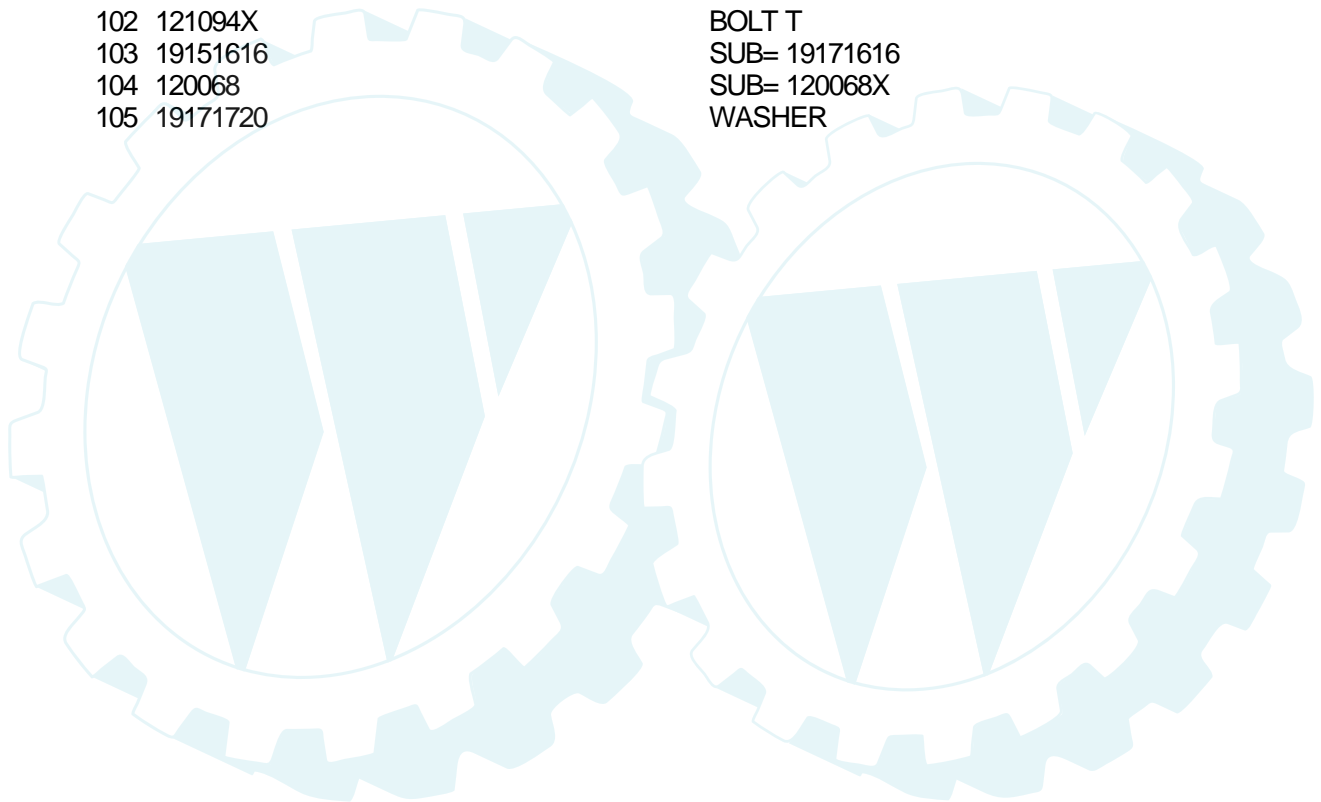


## ROPER LAWN TRACTOR--MODEL NUMBER LT110GR

### ENCLOSURES

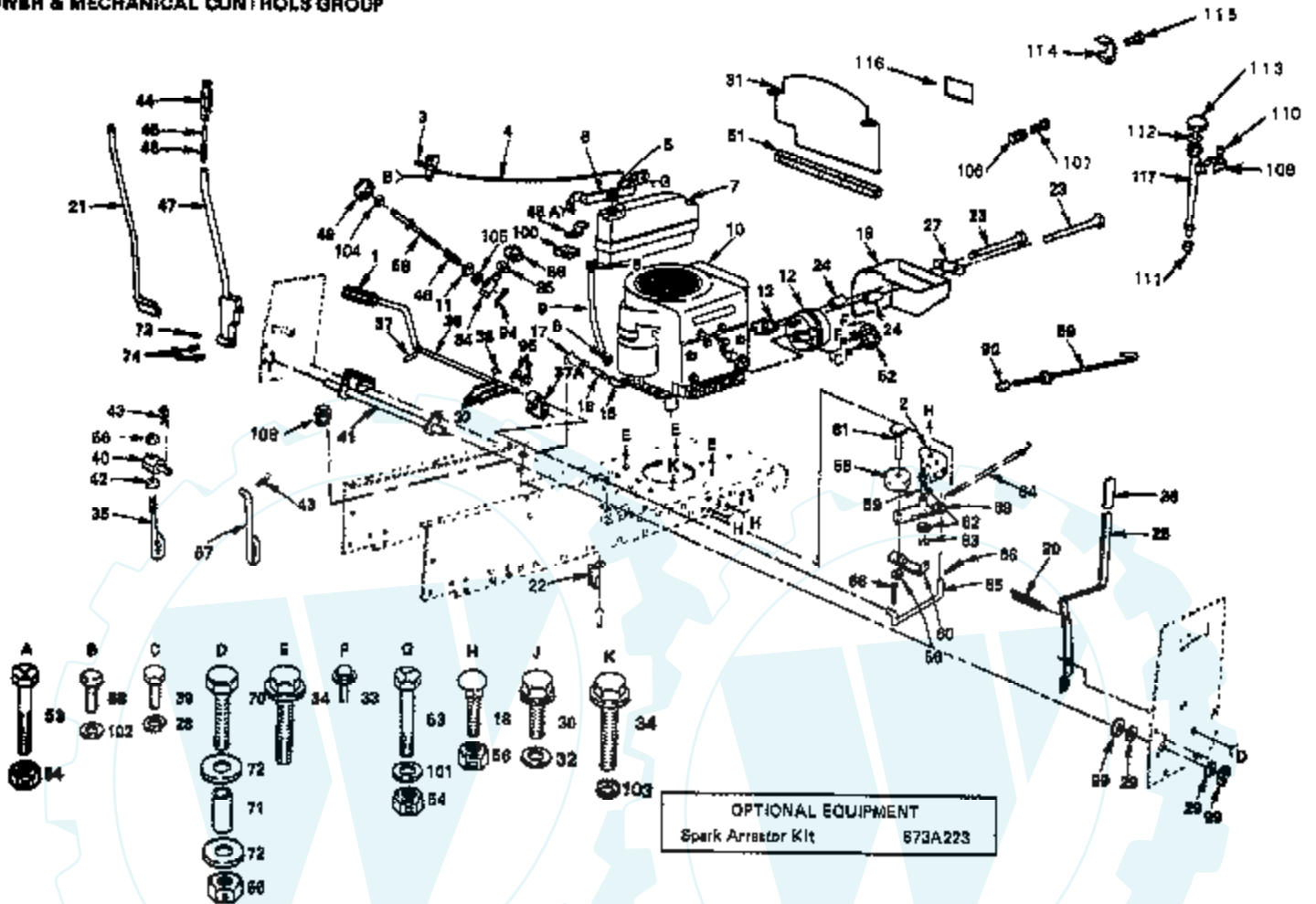


Ref #	Part Number	Qty	Description
37	19091216		WASHER PM
49	73220400		SUB= 50675
51	19131312		WASHER
52	73680600		SUB= 73690600
53	74760616		BOLT
83	19132012		WASHER
84	72140606		BOLT
86	74191008		SCREW
87	10071000		LOCKWASHER
88	2029J		WELDNUT
90	74981020		SCREW
91	7206J		SPACER LT
92	73731000		NUT
97	19070818		WASHER
102	121094X		BOLT T
103	19151616		SUB= 19171616
104	120068		SUB= 120068X
105	19171720		WASHER



ROPER LAWN TRACTOR--MODEL NUMBER LT110GR

POWER & MECHANICAL CONTROLS GROUP



Ref #	Part Number	Qty	Description
	673A223		SCREEN
1	8883R		PEDAL COVER T
2	105724X		SUB= 123102X
3	61159		KNOB
4	101336K		SUB= 132753
5	8504J		SUB= 9188504J
6	104800X		SUPPORT-TANK LT
7	3615J		SUB= 121280X
8	6999R		SUB= 123487X
9	7833R		HOSE T
10			CHECK WITH SUPPLIER
10	252707		ENGINE-B&S
11	19131016		WASHER
12	101273M		MUFFLER LTV
13	1407J		SUB= 272293
15	13240300		STREET ELBOW LT
16	13280328		PIPE NIPPLE
17	13200300		ELBOW
18	72140606		BOLT
19	104910X		BAFFLE ASSY LT
20	102727X		"SPRING.EXT.8.5""
21	104598X		ROD ASSY-LEVER LT
22	104777X		SUB= 140312
23	74780572		BOLT YT
24	101496X		SPACER LT
25	106983X		HANDLE YT
26	4617J		SUB= 532131861
27	104909X		CLIP-MUFFLER LT
28	10040400		LOCKWASHER
29	19292016		WASHER
30	17490612		SCREW
31	104913X		"VERTICAL LT, BAFL"
32	19131312		WASHER
33	17450808		SCREW LT
34	17490620		SCREW
35	105855X		LINK LIFT LT
36	109037X		FOOT SHAFT PEDAL
37	1572H		SUB= 2882J
37A	106918X		ARM BRAKE LT
38	2228M		SUB= 2228M1
39	74780408		BOLT
40	106204X		SUB= 132793
41	109991X		SHAFT ASM T
42	73220600		NUT.HEX.3/8-16UNC
43	4939M		SUB= 85902
44	109413X		GRIP
45	105723X		SUB= 125925X
46	2876H		SPRING T
47	104597X		LEVER ASSY LT
48	104799X		BRACE-TANK LT
49	100734K		SUB= 138057
51	104915X		SUB= 105037X
52	101326L		DEFLECTOR.222573
53	74780512		BOLT
54	73680500		SUB= 73690500
55	106298X		SUB= 139245
56	73680600		SUB= 73690600
57	110029X		LIFT LINK LT

Ref #	Part Number	Qty	Description
58	100735K		ROD ADJUST LT
59	105706X		"LY, BEARING"
60	106499X		SUB= 123205X
61	74760624		SUB= 74930624
62	207J		WASHER T
63	12000039		KLIP RING
64	105709X		"SPRING, RETURN LT"
65	105710X		"LINK, CLUTCH T"
66	76020412		COTTER PIN
69	105705X		SUB= 125829X
70	74760624		SUB= 74930624
71	108056X		BUSHING YT
72	19121612		WASHER LT
73	8330H		KEY STD
74	23180606		SCREW
84	101272K		TRUNION LT
85	19151216		WASHER
86	12000037		KLIP RING
88	17720408		SCREW
89	105844X		SUB= 125637X
90	71673		PLUNGER CAP T
94	76020308		SUB= 3145
95	19252016		SUB= 121749X
99	12000029		RING
100	6431J		PAD-SPACER T
101	19111416		WASHER
102	110457X		SUB= 19091016
103	11050600		LOCKWASHER
104	73350600		NUT
105	110807X		NUT T
106	108746X		SPRING, COMPRESSION
107	108747X		SCREW
108	13290300		PLUG T
109	108751X		CLAMP, OIL FILL TUBE
110	108752X		SCREW
111	108753		GROMMET
112	108754		SEAL
113	108748		CAP
114	7204J		CLAMP
115	14121010		SCREW T
116	108756X		LABEL
117	108750X		TUBE