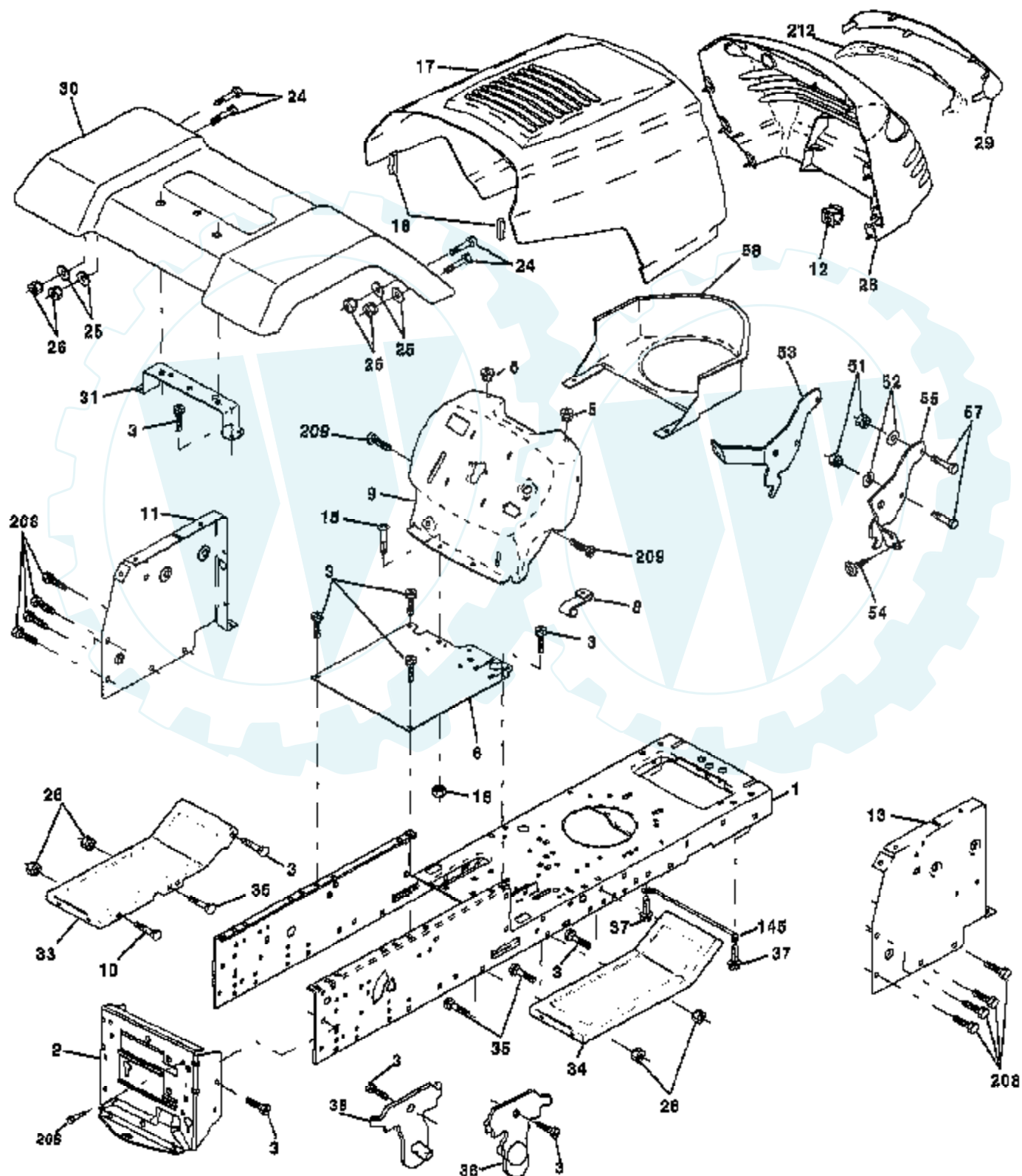


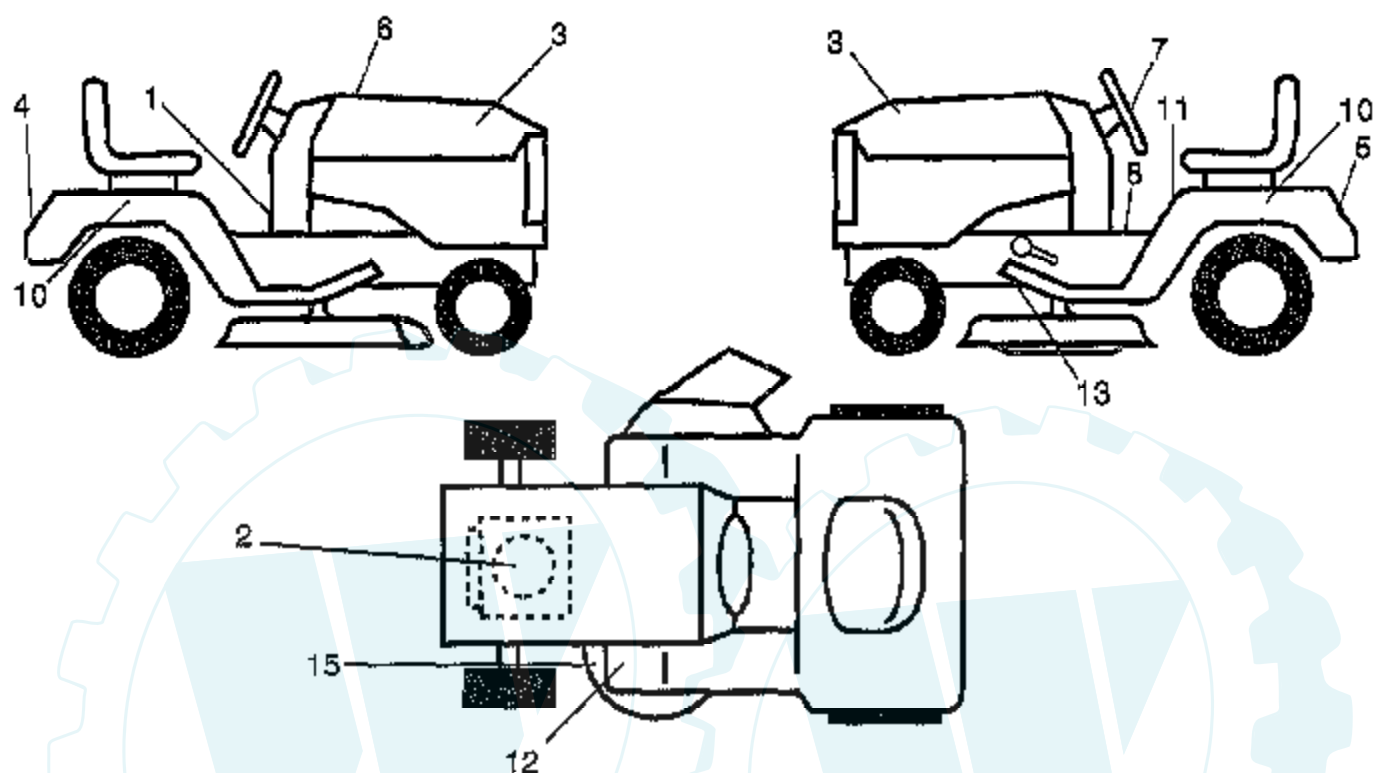
CHASSIS AND ENCLOSURES



| Ref # | Part Number | Qty | Description |
|-------|-------------|-----|---------------------------|
| 1 | 169831 | | CHASSIS |
| 2 | 169061 | | DRAWBAR |
| 3 | 17060612 | | SCREW |
| 5 | 155272 | | BUMPER-HOOD/DASH |
| 6 | 155924X014 | | "SADDLE-SLKSCR,5SP" |
| 8 | 155138 | | CLIP.RETAINER |
| 9 | 168347X011 | | DASH |
| 10 | 72140608 | | SUB= 72110608 |
| 11 | 155927 | | "PANEL-DASH,LH" |
| 12 | 145660 | | CLIP.TINNERMAN |
| 13 | 172107X010 | | DASHBOARD |
| 15 | 74180512 | | SCREW |
| 16 | 73510500 | | NUT |
| 17 | 159639X417 | | HOOD ASM |
| 18 | 126938X | | SUB= 532126938 |
| 24 | 74780616 | | BOLT |
| 25 | 19131312 | | WASHER |
| 26 | 73680600 | | SUB= 73690600 |
| 28 | 150407 | | GRILLE.LENS.QUARDRA.MS428 |
| 29 | 150209X599 | | LENS.GRILLE |
| 30 | 169465X417 | | FENDER |
| 31 | 136619 | | BRKT FENDER |
| 33 | 105476X417 | | FOOTREST.LH.PERF. |
| 34 | 105475X417 | | FOOTREST.RH.PERF |
| 35 | 72140606 | | BOLT |
| 37 | 17490508 | | SCREW LT |
| 38 | 169834 | | BRKT ASM PIVOT MOWER REAR |
| 51 | 73800400 | | NUT |
| 52 | 19091416 | | WASHER |
| 53 | 144697 | | BRACKET.GRILLE.LH |
| 54 | 161464 | | SCREW.HEX.WS.HD |
| 55 | 144696 | | BRACKET.GRILLE.RH |
| 57 | 74780412 | | SUB= 74780414 |
| 58 | 150127 | | AIR DUCT |
| 145 | 156524 | | "ROD POVOT,CHASSIS" |
| 206 | 170165 | | BOLT SHOULDER |
| 208 | 17670608 | | SCREW |
| 209 | 17000612 | | SCREW |
| 212 | 156494 | | INSERT LENS REFLECT |
| | 5479J | | PLUG BUTTON T |

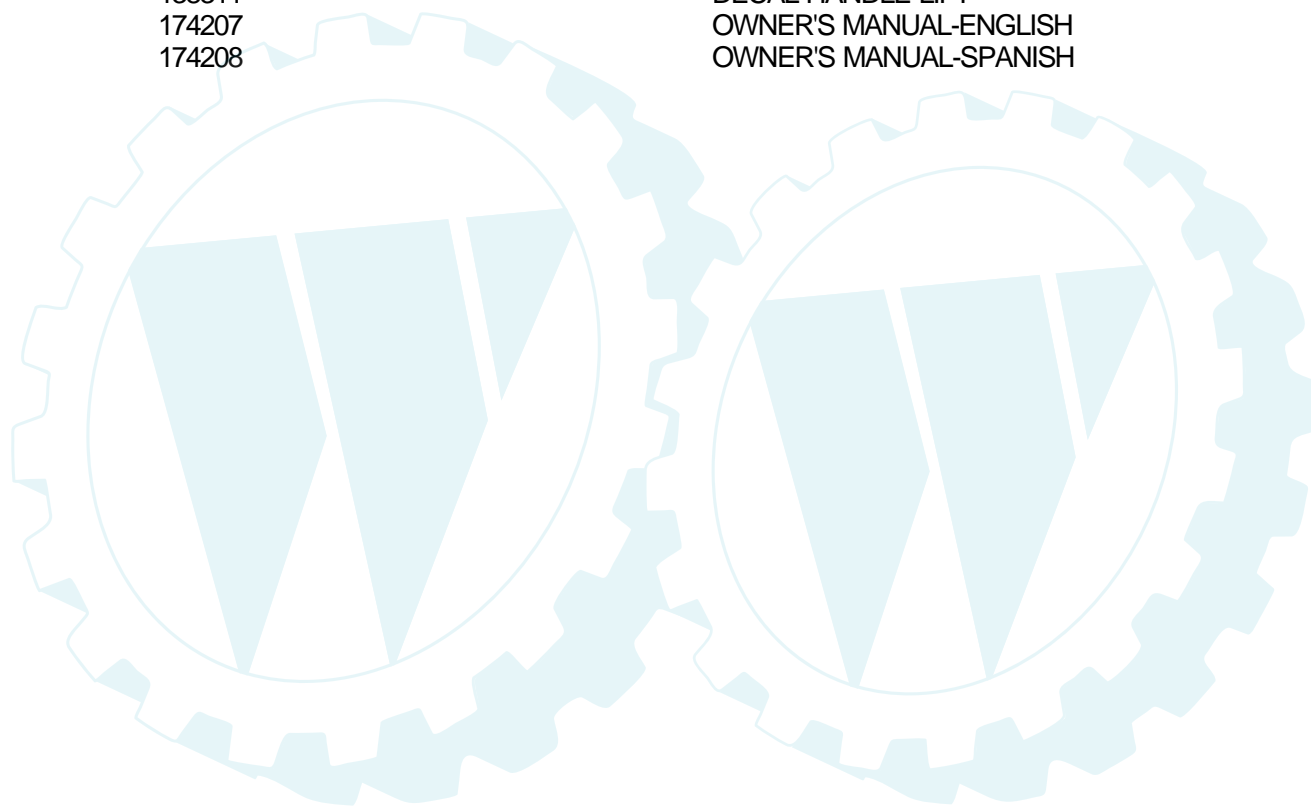
TRACTOR -- MODEL NUMBER 270451

DECALS



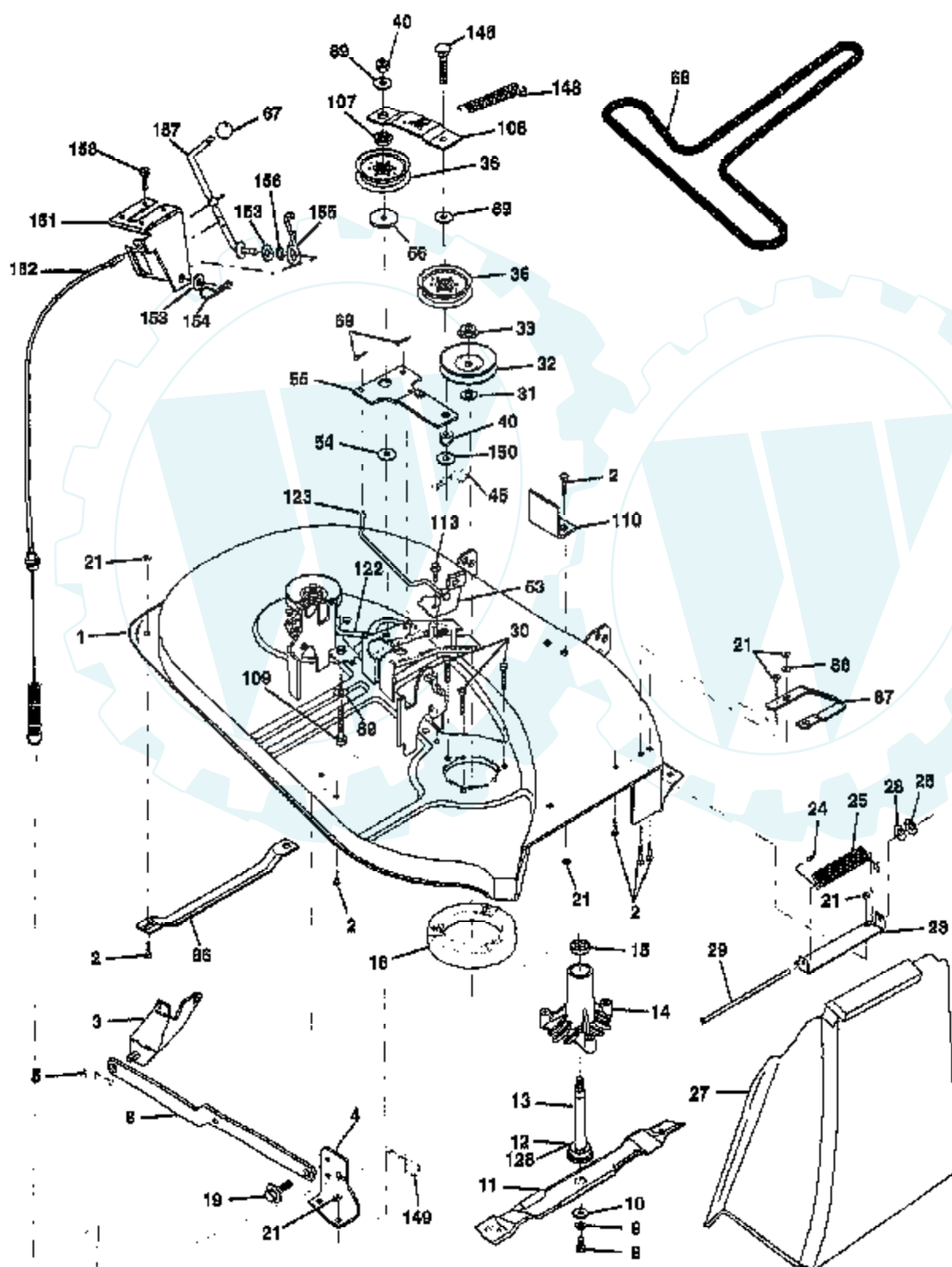
NOTE: All component dimensions given in U. S.
inches 1 inch = 25/4 mm.

| Ref # | Part Number | Qty | Description |
|-------|-------------|-----|--------------------------|
| 1 | 171831 | | DECAL,DASHL |
| 2 | 172168 | | DECAL, ENGINE |
| 3 | 171828 | | DECAL, HOOD |
| 4 | 171829 | | DECAL, FENDER |
| 5 | 145005 | | DECAL.BATRY.3-3908 |
| 6 | 174209 | | DECAL, REPLACEMENT PARTS |
| 7 | 171830 | | DECAL, STEERING |
| 8 | 156867 | | "DECAL DASH,OPER." |
| 10 | 171833 | | DECAL, FENDER |
| 11 | 156439 | | "DECAL-FENDER,DANG" |
| 12 | 4900J | | DECAL T |
| 13 | 146046 | | DECAL.BELT-V.SCHM |
| 15 | 136832 | | DECAL |
| | 138311 | | DECAL HANDLE LIFT |
| | 174207 | | OWNER'S MANUAL-ENGLISH |
| | 174208 | | OWNER'S MANUAL-SPANISH |



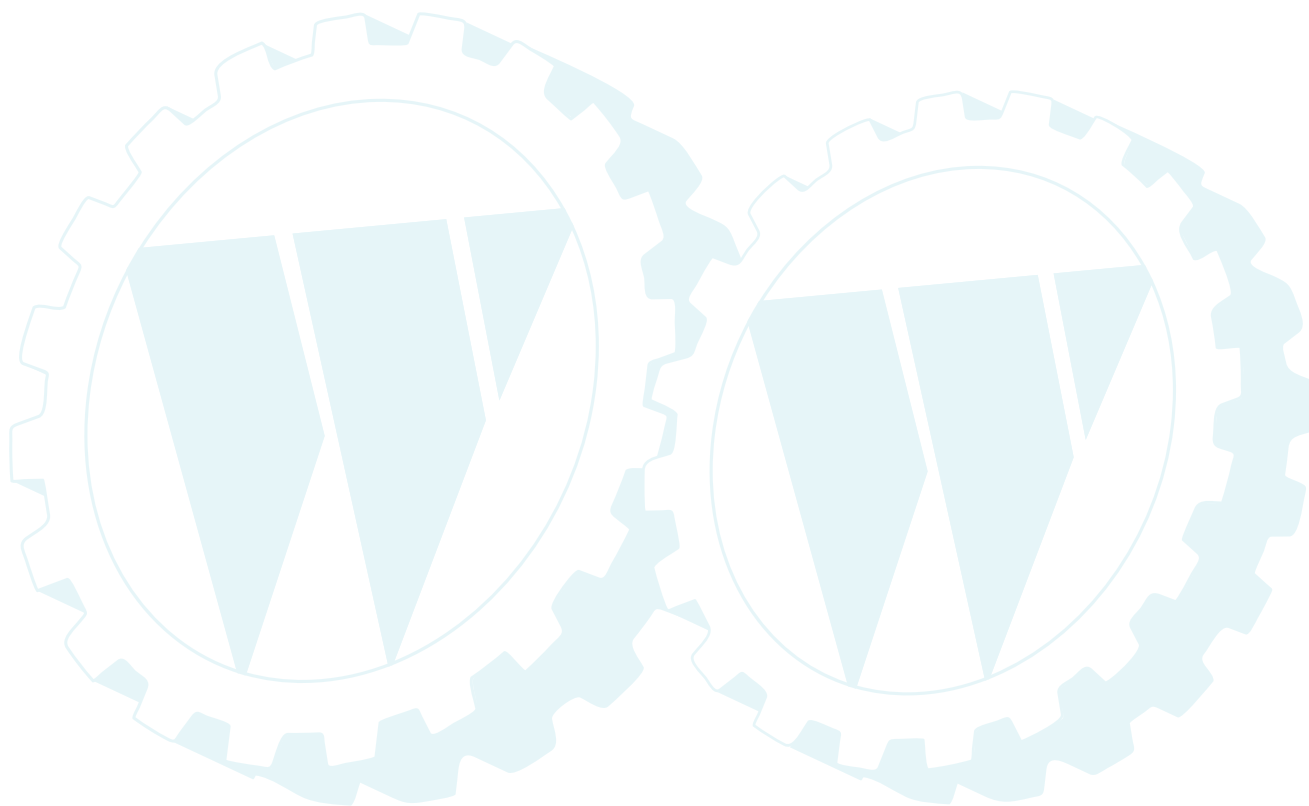
TRACTOR--MODELNUMBER270451

MOWER DECK



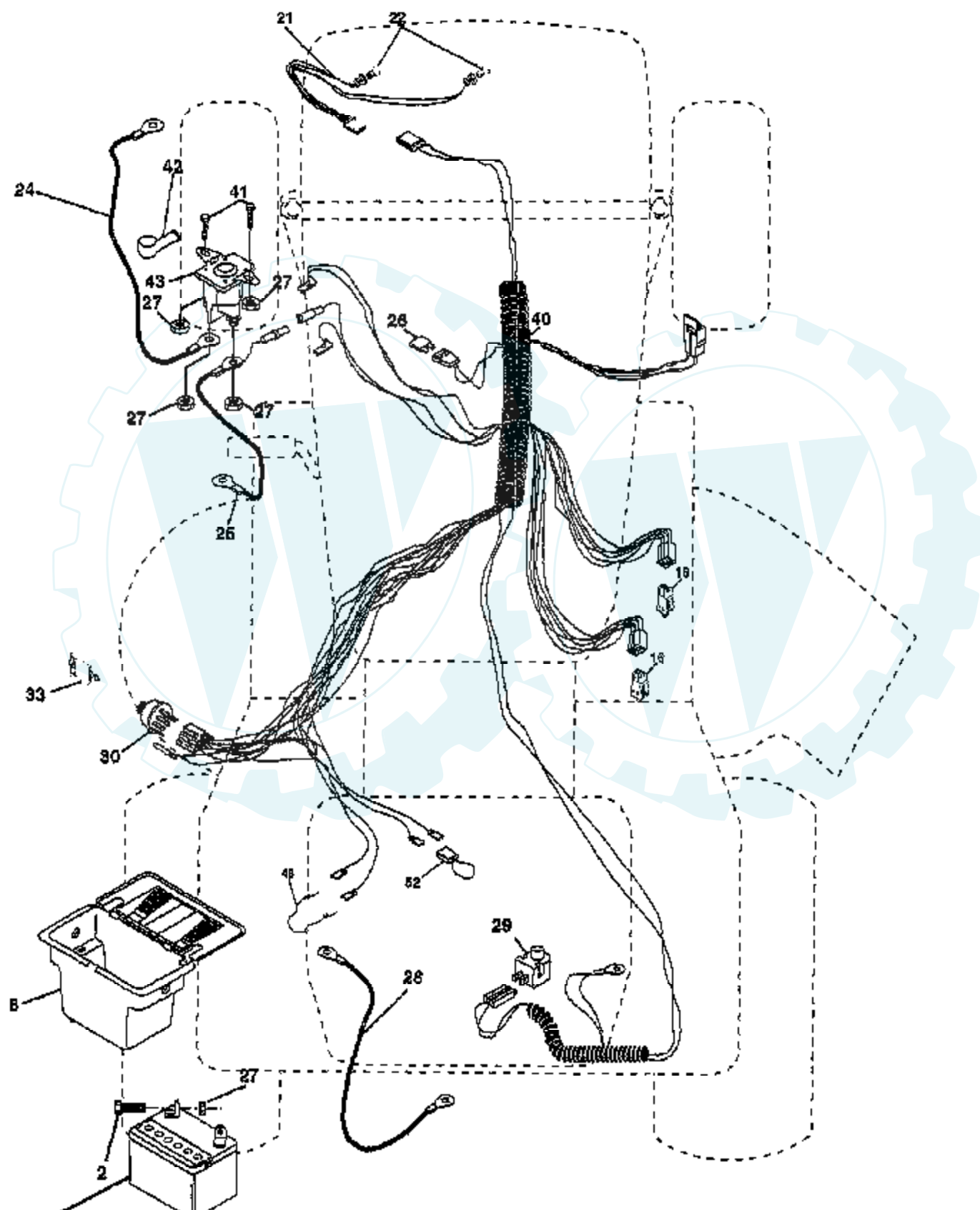
| Ref # | Part Number | Qty | Description |
|-------|-------------|-----|---------------------------------|
| 1 | 170280 | | MOWER HSG ASSY |
| 2 | 72140506 | | BOLT |
| 3 | 138017 | | BRKT ASM SWAY BAR |
| 4 | 169970 | | BRKT SWAY BAR DECK |
| 5 | 4939M | | SUB= 85902 |
| 6 | 130832 | | SUB= 130833 |
| 8 | 850857 | | BLADE BOLT |
| 9 | 10030600 | | SUB= 10040600 |
| 10 | 140296 | | WASHER.HARD.BLADE |
| 11 | 134148 | | "BLADE.38""V.MULCH" |
| 12 | 129895 | | BEARING.BALL |
| 13 | 137645 | | SUB= 137646 |
| 14 | 128774 | | HSG ASM MANDREL |
| 15 | 110485X | | BEARING |
| 16 | 140329 | | STRIPPER RND MWR |
| 19 | 132827 | | BOLT SHD 5/16-18 |
| 21 | 73680500 | | SUB= 73690500 |
| 23 | 137607 | | BRKT DEFLECTOR |
| 24 | 105304X | | CAP-SLEEVE LT |
| 25 | 123713X | | SPRING TORSION |
| 26 | 110452X | | NUT PUSH M |
| 27 | 106736X428 | | DEFLECTOR, SHIELD |
| 28 | 19111016 | | WASHER |
| 29 | 106735X | | ROD-HINGE T |
| 30 | 157722 | | "SCREW-THD ROLL,WA" |
| 31 | 129963 | | WASHER |
| 32 | 153532 | | PULLEY.MANDREL.38 |
| 33 | 137266 | | SUB= 139729 |
| 36 | 131494 | | FLAT IDLER PULLEY |
| 45 | 4497H | | RETAINER M |
| 53 | 130840 | | BRAKE ASM |
| 54 | 133943 | | HARDENED WASHER |
| 55 | 133840 | | IDLER ARM ASSY |
| 56 | 165723 | | SPACER.RETAINER.MOWER |
| 67 | 149846 | | KNOB.OVAL.CUSTOM |
| 68 | 144200 | | BELT.V.T-PATH |
| 69 | 76020312 | | SUB= 3145 |
| 86 | 7631J | | RUNNER-LH M |
| 87 | 128772 | | RUNNER RH |
| 88 | 19111216 | | WASHER M |
| 89 | 19131612 | | WASHER GT |
| 107 | 133502 | | RETAINER SPACER |
| 108 | 133503 | | IDLER ARM STIFF |
| 109 | 74760640 | | BOLT |
| 110 | 142587 | | UPSTOP DECK FT 38 |
| 113 | 17060512 | | SCREW |
| 122 | 131289 | | BRAKE ROD LH |
| 123 | 169971 | | ROD |
| 128 | 153390 | | WASHER.FELT. |
| 146 | 165891 | | BOLT |
| 148 | 169022 | | SPRING RETURN IDLER |
| 149 | 165898 | | RETAINER SPRING |
| 150 | 19091216 | | WASHER PM |
| 151 | 169670 | | BRKT CLUTCH CABLE |
| 152 | 172758 | | CLUTCH CABLE |
| 153 | 169674 | | WASHER FLAT |
| 154 | 169675 | | SPRING RETAINER |
| 155 | 169671 | | SPRING RETENTION LVR CLUTCH CAB |

| Ref # | Part Number | Qty | Description |
|-------|-------------|-----|----------------------|
| 156 | 169672 | | SPACER |
| 157 | 169669 | | ROD.CLUTCH.CABLE.3/8 |
| 158 | 17720410 | | SCREW LT |
| | 130794 | | MANDREL ASM |
| | 171665 | | COMPLETE MOWER DECK |

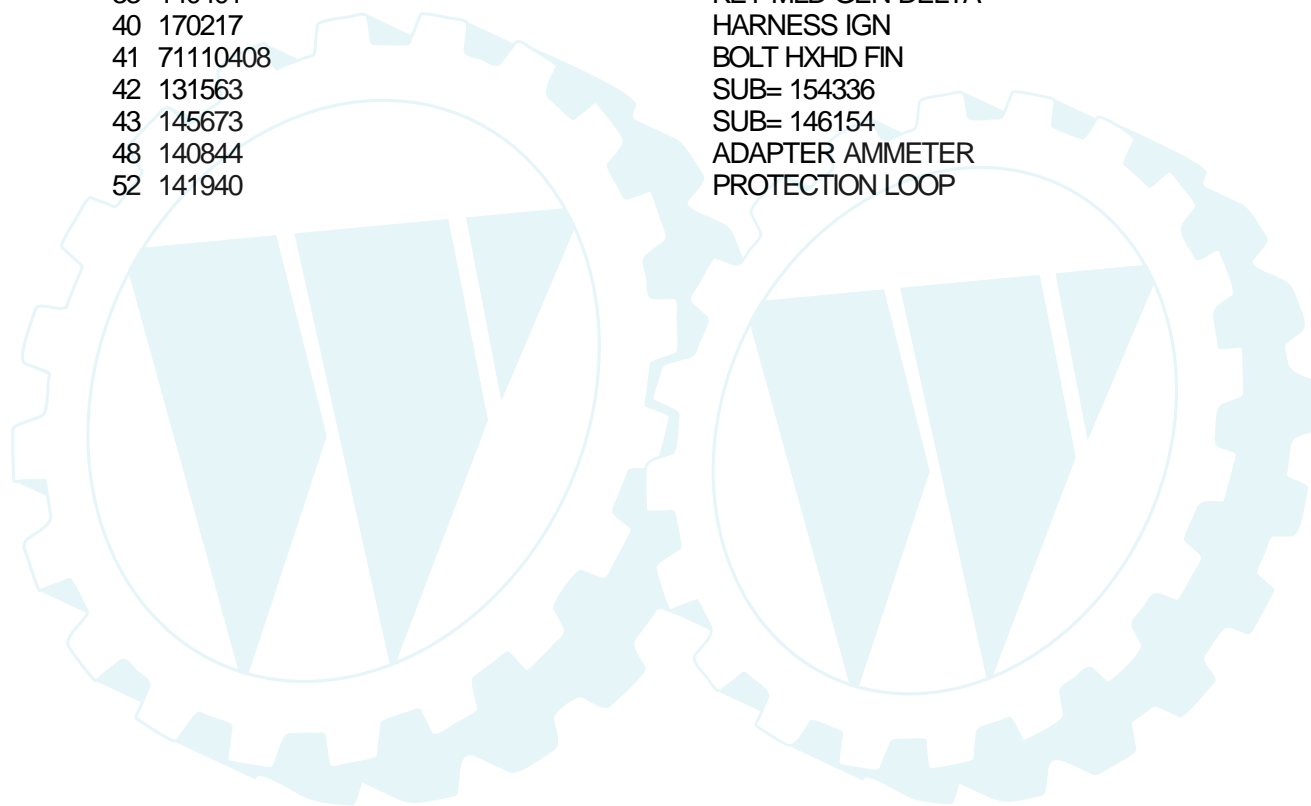


TRACTOR--MODEL NUMBER 270451

ELECTRICAL

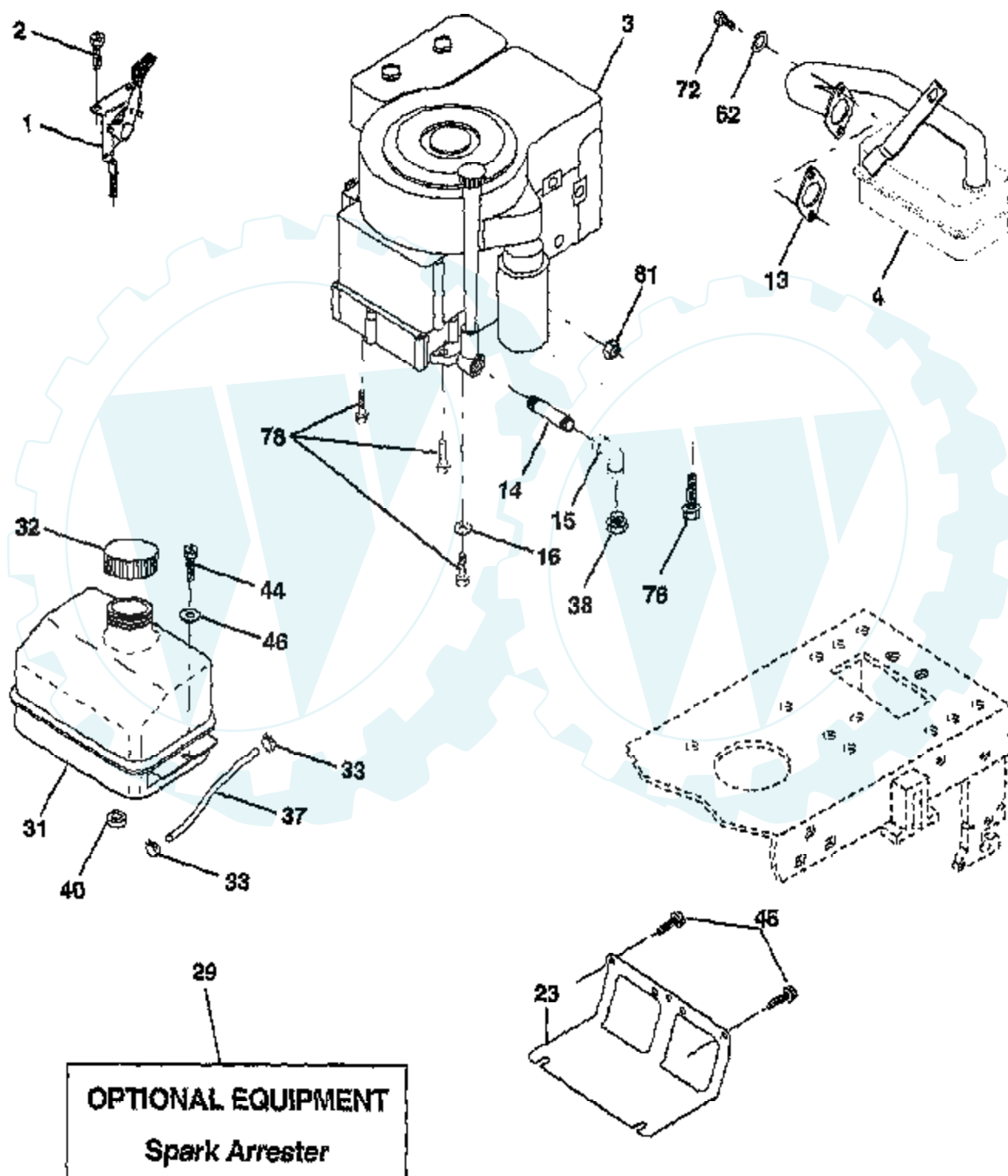


| Ref # | Part Number | Qty | Description |
|-------|-------------|-----|---------------------------|
| 1 | 144925 | | SUB= 123899X |
| 2 | 74760412 | | BOLT LT |
| 8 | 156417 | | "CASE,BATTERY.MECH" |
| 16 | 153664 | | SWITCH INTERLOCK |
| 21 | 166181 | | HARNESS.ASM.LIGHT W/4152J |
| 22 | 4152J | | HEADLAMP BULB |
| 24 | 4799J | | "CABLE T, BATTERY" |
| 25 | 146147 | | CABLE.BTRY.6GA.RD |
| 26 | 166180 | | FUSE.15 AMP |
| 27 | 73510400 | | NUT |
| 28 | 4207J | | CABLE T |
| 29 | 121305X | | SWITCH SEAT |
| 30 | 163968 | | SWITCH.IGN. |
| 33 | 140401 | | KEY MLD GEN DELTA |
| 40 | 170217 | | HARNESS IGN |
| 41 | 71110408 | | BOLT HXHD FIN |
| 42 | 131563 | | SUB= 154336 |
| 43 | 145673 | | SUB= 146154 |
| 48 | 140844 | | ADAPTER AMMETER |
| 52 | 141940 | | PROTECTION LOOP |



TRACTOR--MODEL NUMBER 270451

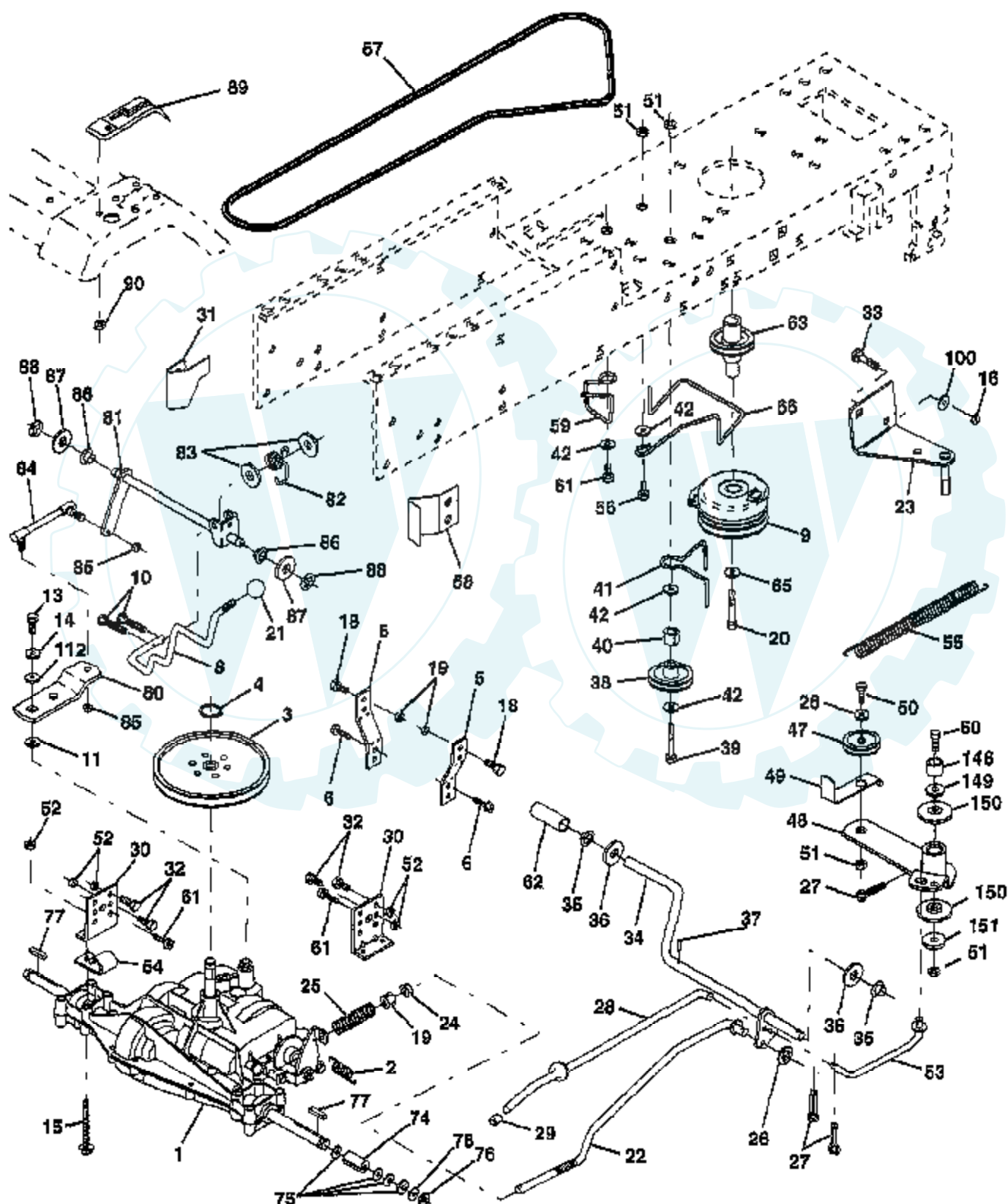
ENGINE



| Ref # | Part Number | Qty | Description |
|-------|-------------|-----|---------------------|
| 1 | 140310 | | CONTROL THROTTLE |
| 2 | 17720410 | | SCREW LT |
| 3 | SUPPLIER | | CHECK WITH SUPPLIER |
| 4 | 137348 | | MUFFLER |
| 13 | 165291 | | SUB= 272293 |
| 14 | 13280324 | | PIPE NIPPLE |
| 15 | 13200300 | | ELBOW |
| 16 | 11050600 | | LOCKWASHER |
| 23 | 169837 | | SHIELD BROWNING |
| 29 | 137180 | | SUB= 532137180 |
| 31 | 109202X | | TANK.FUEL.LT. |
| 32 | 140527 | | CAP ASM FUEL |
| 33 | 123487X | | HOSE CLAMP |
| 37 | 137040 | | LINE FUEL |
| 38 | SUPPLIER | | CHECK WITH SUPPLIER |
| 40 | 124028X | | SUB= 532124028 |
| 44 | 17670412 | | SCREW |
| 45 | 17000612 | | SCREW |
| 46 | 19091416 | | WASHER |
| 62 | 10040500 | | LOCKWASHER |
| 72 | 71070512 | | SCREW |
| 78 | 17060620 | | SCREW |
| 81 | 73510400 | | NUT |

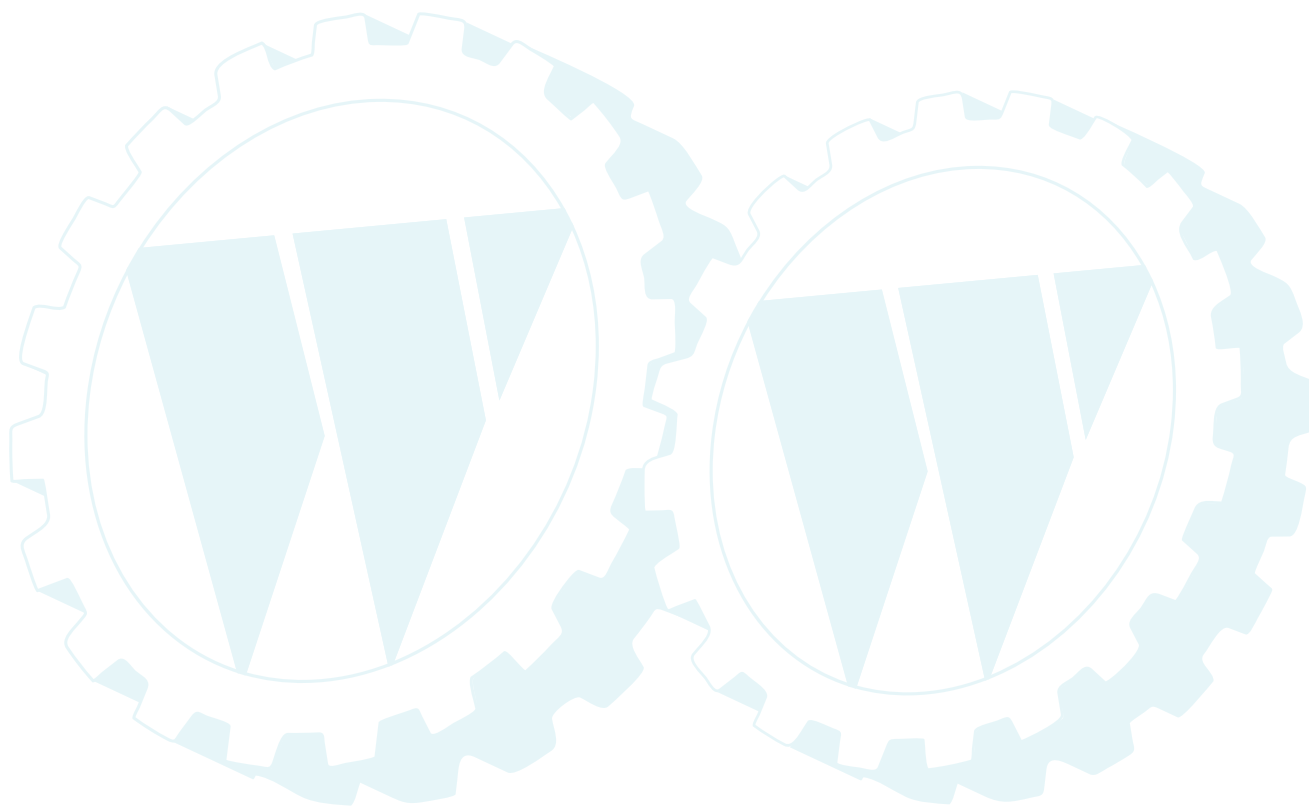
TRACTOR - MODEL NUMBER 270451

GROUND DRIVE



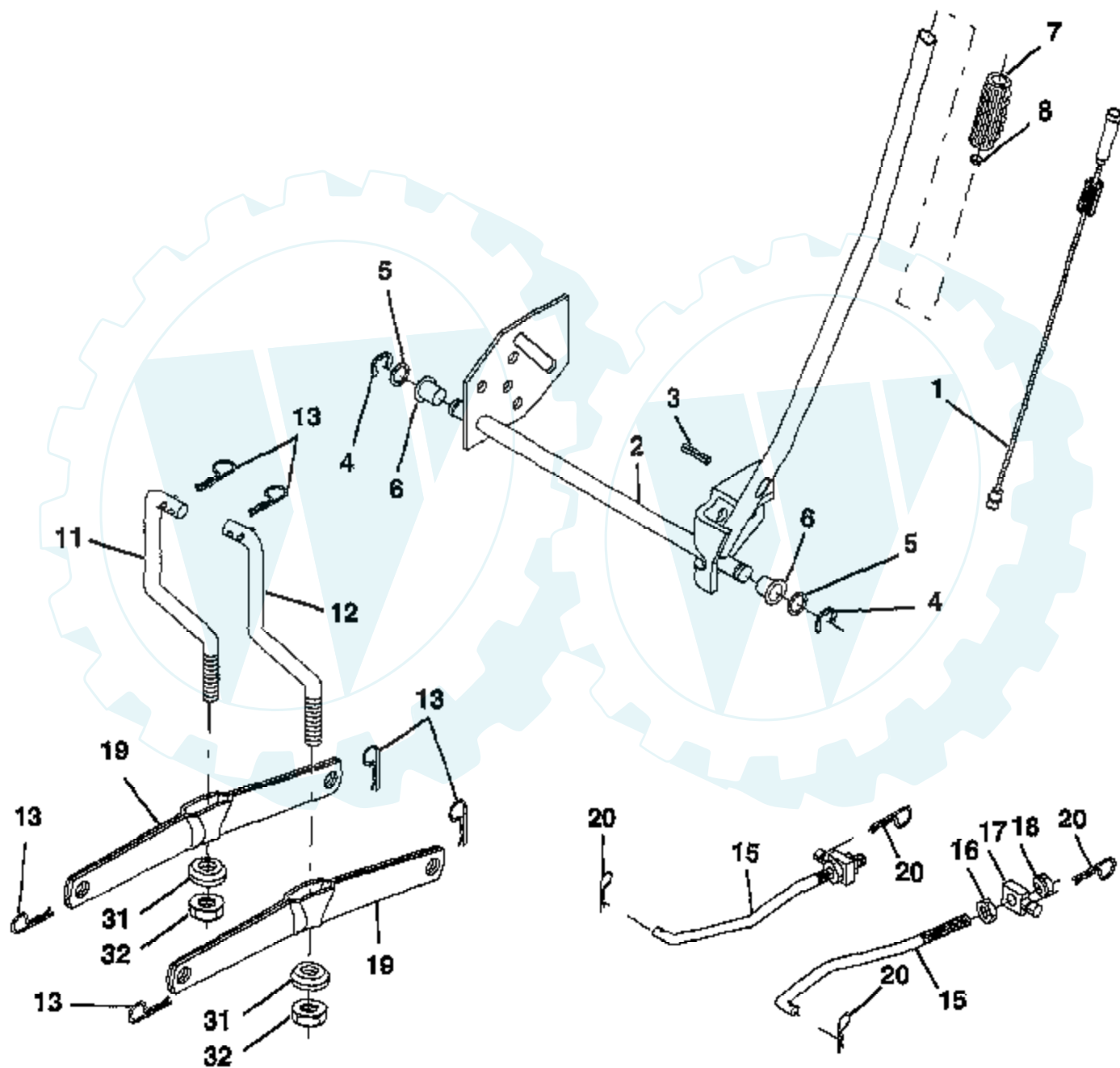
| Ref # | Part Number | Qty | Description |
|-------|-------------|-----|--------------------------|
| 1 | SUPPLIER | | CHECK WITH SUPPLIER |
| 2 | 146682 | | SPRING.BRAKE.RETU |
| 3 | 123666X | | PULLEY TRANS |
| 4 | 12000028 | | SUB= 2267J |
| 5 | 121520X | | STRAP TORQUE |
| 6 | 17060512 | | SCREW |
| 7 | 162240 | | BRKT.SADDLE.SHIFT |
| 8 | 131679 | | SHIFT ROD |
| 10 | 76020416 | | PIN COTTER 1/8 |
| 11 | 105701X | | WASH-SHFT PLT LT |
| 12 | 19151216 | | WASHER |
| 13 | 74550412 | | BOLT.1/4-28.W/PAT |
| 14 | 10040400 | | LOCKWASHER |
| 15 | 74490544 | | BOLT.HX.FLG.5/16 |
| 18 | 74780616 | | BOLT |
| 19 | 73800600 | | NUT |
| 21 | 106933X | | KNOB T (1/2-HOLE) |
| 22 | 130804 | | BRAKE ROD |
| 24 | 73350600 | | NUT |
| 25 | 106888X | | SPRING ROD LT |
| 26 | 19131316 | | WASHER |
| 27 | 76020412 | | COTTER PIN |
| 28 | 145204 | | ROD.BRAKE.PARK.LT |
| 29 | 71673 | | PLUNGER CAP T |
| 30 | 130807 | | TRANSAXLE MTG BKT |
| 32 | 74760512 | | BOLT |
| 34 | 155071 | | SHAFT ASM-PEDAL F |
| 35 | 120183X | | NYLON BEARING |
| 36 | 19211616 | | WASHER LT |
| 37 | 1572H | | SUB= 2882J |
| 38 | 131494 | | FLAT IDLER PULLEY |
| 39 | 74760644 | | BOLT |
| 40 | 4470J | | SPACER T |
| 41 | 165838 | | "KEEPER,BELT.IDLER FLAT" |
| 42 | 19131312 | | WASHER |
| 47 | 127783 | | SUB= 139245 |
| 48 | 154407 | | BELLCRANK.CLUTCH |
| 49 | 123205X | | RETAIN BELT |
| 50 | 74760624 | | SUB= 74930624 |
| 51 | 73680600 | | SUB= 73690600 |
| 52 | 73680500 | | SUB= 73690500 |
| 53 | 105710X | | "LINK, CLUTCH T" |
| 55 | 105709X | | "SPRING, RETURN LT" |
| 56 | 74760620 | | SUB= 74780620 |
| 57 | 160855 | | "V-BELT,95.3" |
| 59 | 169691 | | KEEPER BELT SPAN CTR |
| 61 | 17060612 | | SCREW |
| 62 | 8883R | | PEDAL COVER T |
| 63 | 140186 | | PULLEY.ENGINE |
| 64 | 71170764 | | BOLT |
| 65 | 10040700 | | LOCKWASHER |
| 66 | 154778 | | KEEPER-BELT |
| 70 | 134683 | | KEEPER BELT ENG |
| 72 | 19132012 | | WASHER |
| 74 | 109502X | | SPACER LT |
| 75 | 121749X | | WASHER |
| 76 | 12000001 | | E-RING LT |
| 77 | 123583X | | SQUARE KEY |

| Ref # | Part Number | Qty | Description |
|-------|-------------|-----|--------------------------|
| 78 | 121748X | | WASHER |
| 112 | 19091210 | | WASHER LT |
| 113 | 127285X | | "STRAP,TORQUE" |
| 116 | 72110610 | | BOLT RDHD 3/8-16 |
| 150 | 165850 | | BUSHING.BELLCRANK.GRD.DR |
| 151 | 19133210 | | WASHER |
| 170 | 165849 | | KEEPER.BELT.TRANSAXLE |
| 202 | 72110612 | | BOLT.3/8-16X1.50 |
| 204 | 17060516 | | SCREW |

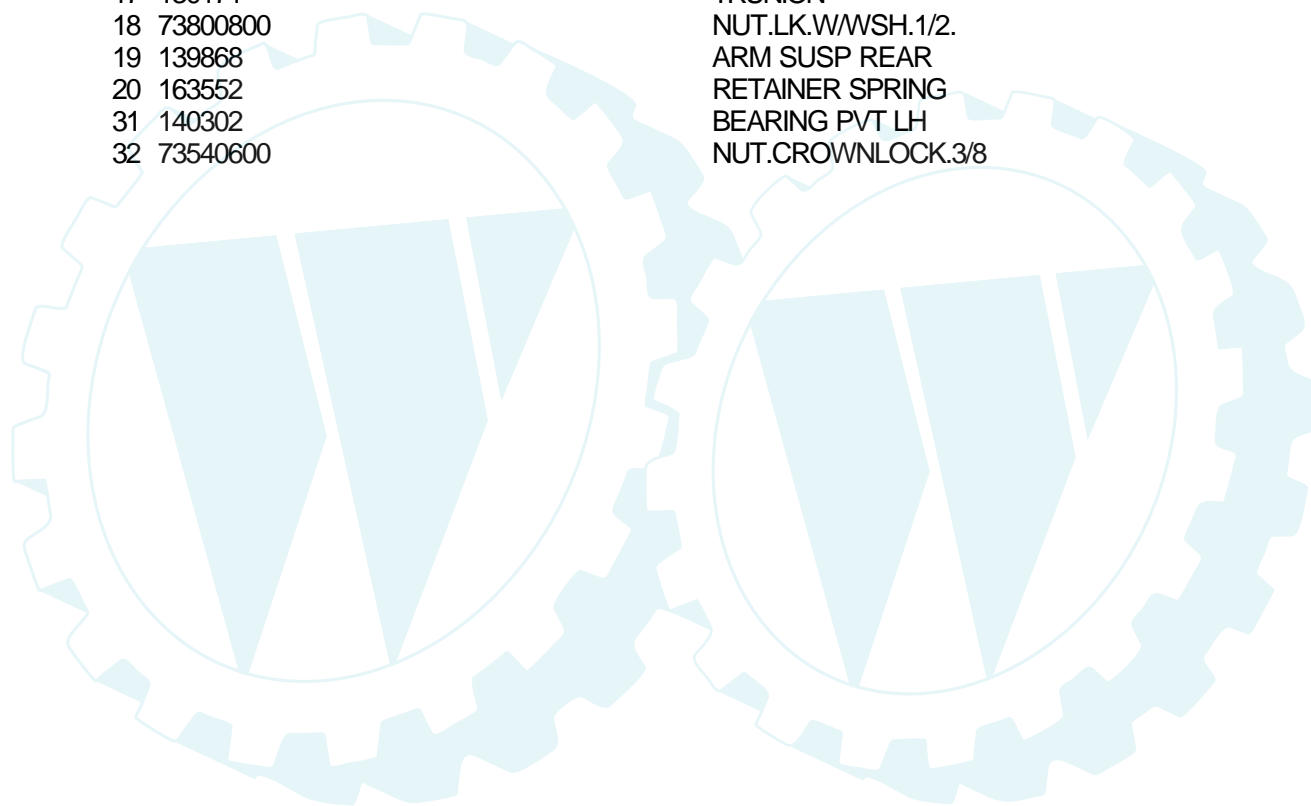


TRACTOR--MODEL NUMBER 270451

LIFT ASSEMBLY

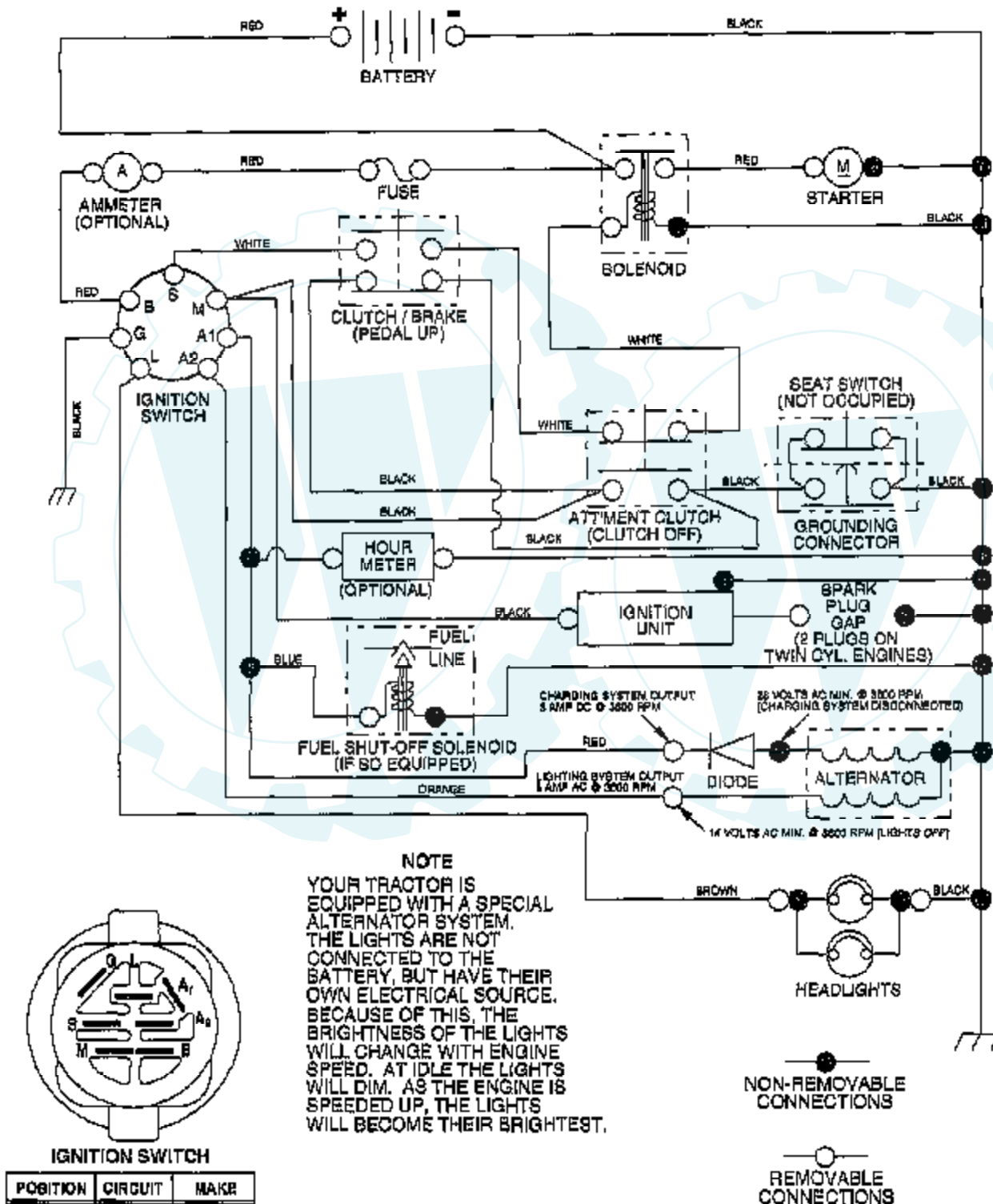


| Ref # | Part Number | Qty | Description |
|-------|-------------|-----|---------------------|
| 1 | 159460 | | WIRE ASM W.SPRING |
| 2 | 159471 | | "SHAFT ASM LIFT,RH" |
| 3 | 105767X | | PIN-GROOVE LT |
| 4 | 12000002 | | SUB= 2225J |
| 5 | 19211621 | | WASHER |
| 6 | 120183X | | NYLON BEARING |
| 7 | 125631X | | GRIP HANDLE |
| 8 | 122365X | | SUB= 125925X |
| 11 | 139865 | | SUB= 918139865 |
| 12 | 139866 | | SUB= 151140 |
| 13 | 4939M | | SUB= 85902 |
| 15 | 173288 | | LINK, FRONT |
| 16 | 73350800 | | NUT |
| 17 | 130171 | | TRUNION |
| 18 | 73800800 | | NUT.LK.W/WSH.1/2. |
| 19 | 139868 | | ARM SUSP REAR |
| 20 | 163552 | | RETAINER SPRING |
| 31 | 140302 | | BEARING PVT LH |
| 32 | 73540600 | | NUT.CROWNLOCK.3/8 |

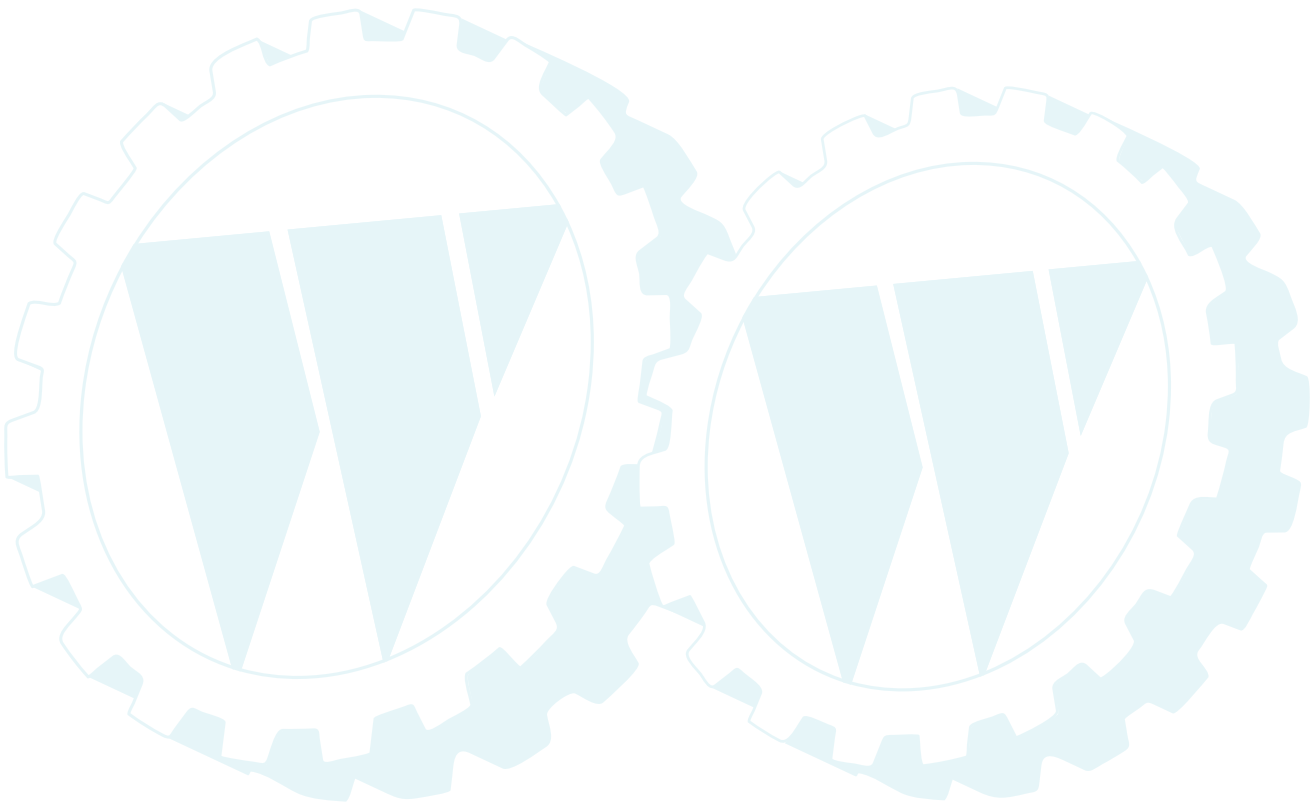


TRACTOR--MODEL NUMBER 270451

SCHEMATIC

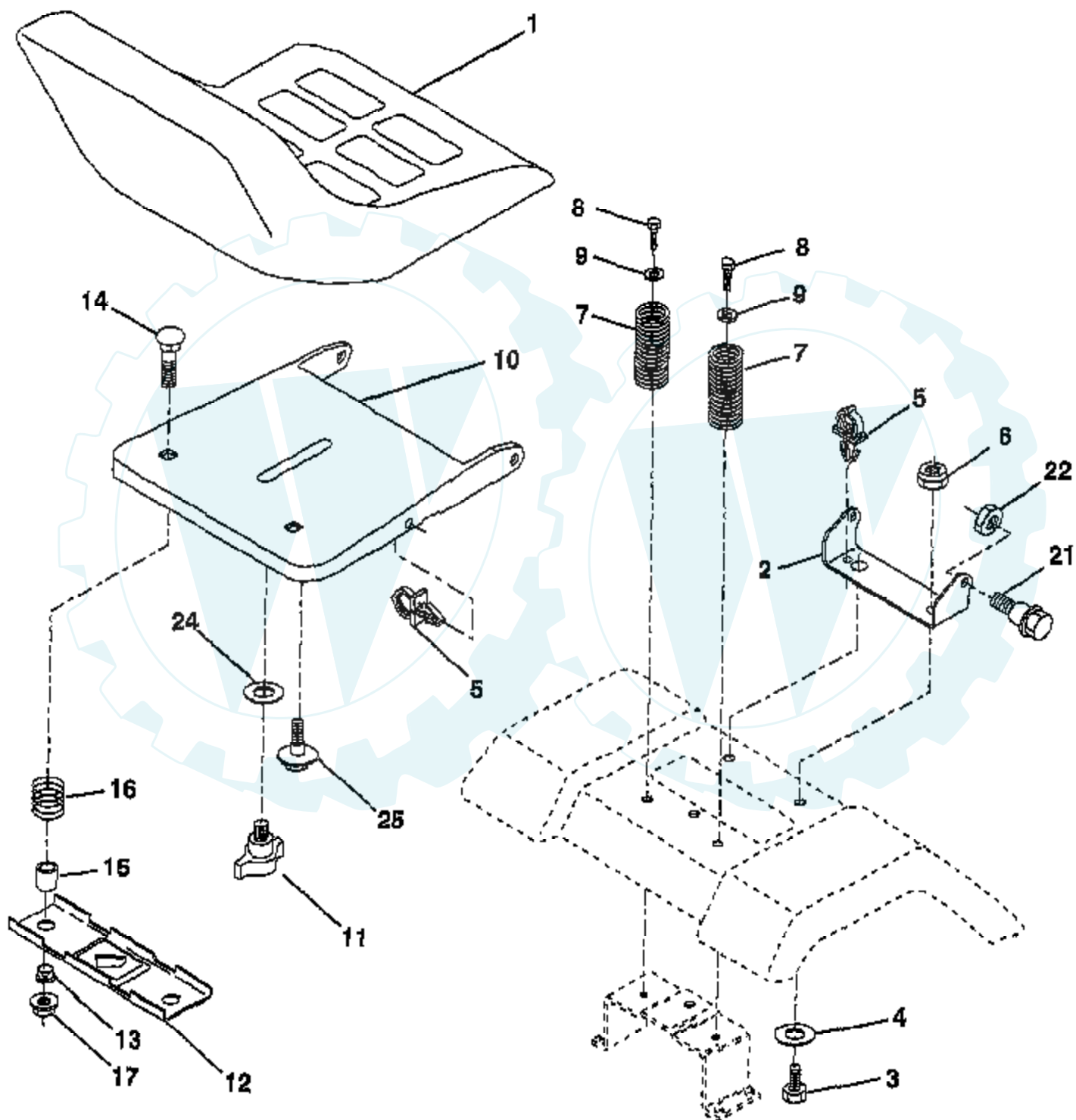


| Ref # | Part Number | Qty | Description |
|-------|-------------|-----|----------------|
| | REFER | | REFER TO IMAGE |



TRACTOR – MODEL NUMBER 270451

SEAT ASSEMBLY

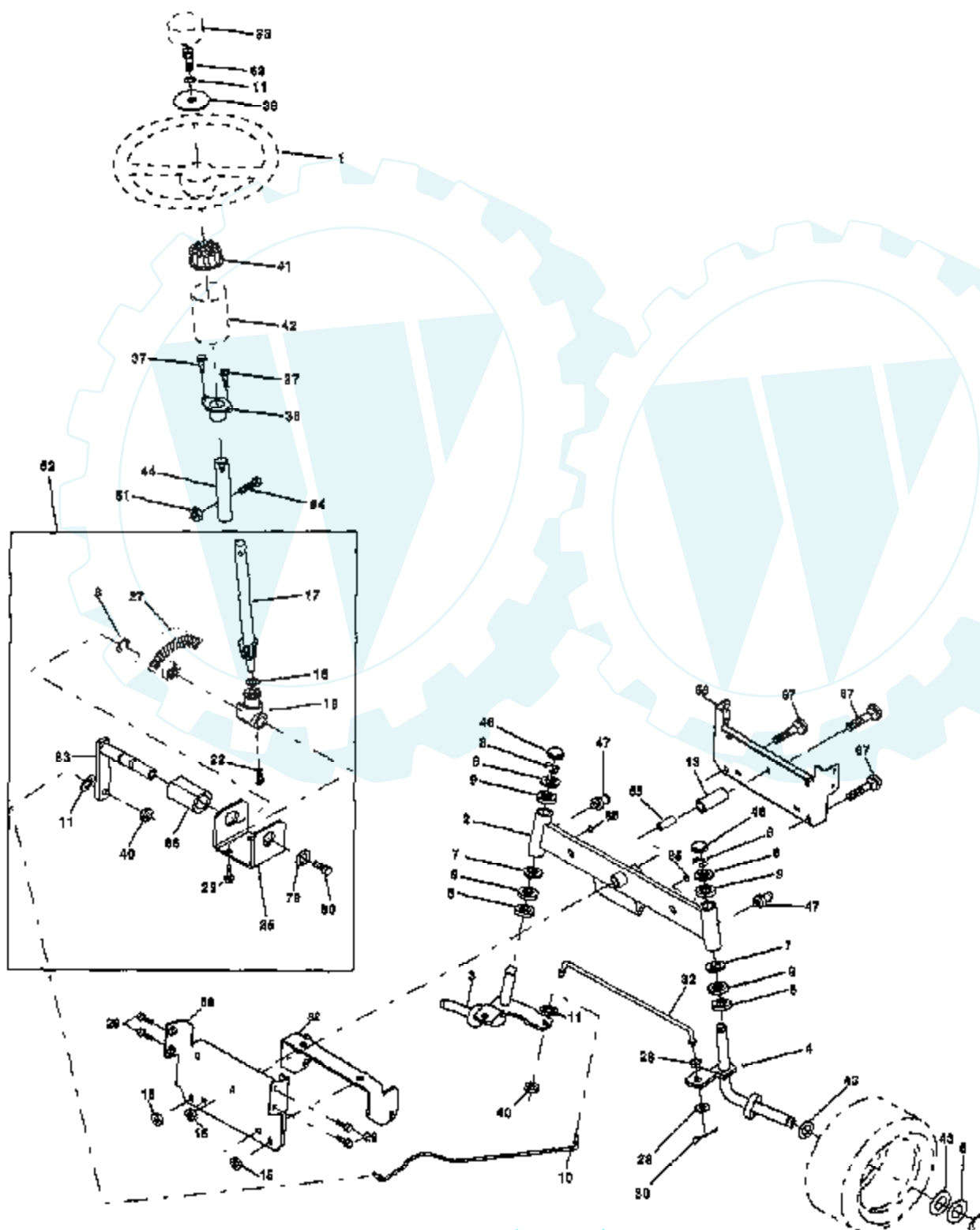


NOTE: All component dimensions given in U. S.
Inches 1 inch = 25/4 mm

| Ref # | Part Number | Qty | Description |
|-------|-------------|-----|-----------------------|
| 1 | 127427 | | SUB= 140119 |
| 2 | 140551 | | BRACKET PVT SEAT |
| 3 | 71110616 | | BOLT |
| 4 | 19131610 | | WASHER PM |
| 5 | 145006 | | CLIP.PUSH-IN.HING |
| 6 | 73800600 | | NUT |
| 7 | 124181X | | SPRING COMPRESSIO |
| 8 | 17000616 | | SCREW |
| 9 | 19131614 | | WASHER |
| 10 | 155925 | | PAN-SEAT |
| 11 | 166369 | | KNOB.SEAT.ADJ.WINGNUT |
| 12 | 121246X | | BRKT SWITCH |
| 13 | 121248X | | BUSHING |
| 14 | 72050412 | | BOLT-RD HD SQ NK |
| 15 | 134300 | | SPLIT SPACER |
| 16 | 121250X | | SPRING |
| 17 | 123976X | | SUB= 73900400 |
| 21 | 171852 | | BOLT |
| 22 | 73800500 | | NUT |
| 24 | 19171912 | | WASHER |
| 25 | 127018X | | "BOLT,SHOULDER" |

TRACTOR--MODEL NUMBER 270451

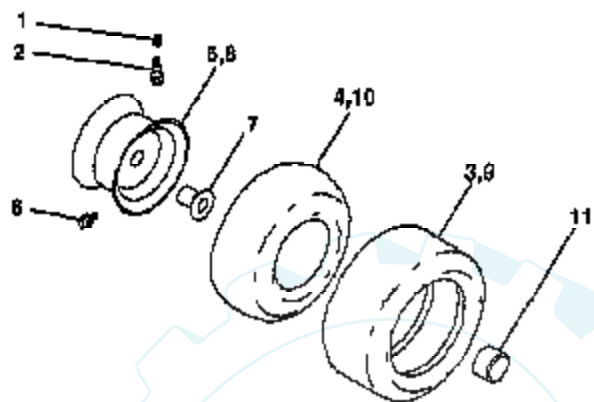
STEERING



| Ref # | Part Number | Qty | Description |
|-------|-------------|-----|------------------------|
| 1 | 140044 | | WHEEL STR AYP BLK |
| 2 | 154427 | | AXLE ASM |
| 3 | 156483 | | SPINDLE.ASM.LH |
| 4 | 157473 | | "SPINDLE ASM,RH" |
| 5 | 6266H | | WASHER .T |
| 6 | 121748X | | WASHER |
| 7 | 19272016 | | WASHER |
| 8 | 12000029 | | RING |
| 9 | 3366R | | COL. SRTG. BEAR. |
| 10 | 169832 | | LINK DRAG |
| 11 | 10040600 | | LOCKWASHER |
| 13 | 136518 | | SPACER BEARING |
| 15 | 145212 | | NUT.HXFLG.LOCK. |
| 17 | 156546 | | SHAFT ASM STEERIN |
| 18 | 57079 | | THRUST WASHER |
| 19 | 160395 | | SUPPORT.SHAFT.STEER |
| 22 | 165857 | | SCREW.HX.WSH.HD |
| 23 | 165851 | | SHAFT.ASM.PITMAN |
| 25 | 154406 | | BRKT-STEERING |
| 26 | 126847X | | BUSHING.DRAGLINK |
| 27 | 136874 | | GEAR SECTOR |
| 28 | 19131416 | | WASHER |
| 29 | 17060612 | | SCREW |
| 30 | 76020412 | | COTTER PIN |
| 32 | 130465 | | TIE ROD |
| 36 | 155099 | | BUSHING.STEERING |
| 37 | 152927 | | "SCREW-TT,10-32 FL" |
| 38 | 140045 | | CAP STEER AYP |
| 39 | 19133812 | | WASHER |
| 40 | 7810H | | GRIPCO NUT |
| 41 | 100711L | | ADAPTER LT |
| 42 | 145054X428 | | BOOT.STEERING.DASH.P/L |
| 43 | 121749X | | WASHER |
| 44 | 153720 | | EXT SHAFT STEERIN |
| 46 | 121232X | | CAP |
| 47 | 6855M | | ZERK M |
| 51 | 73800500 | | NUT |
| 54 | 74780520 | | BOLT |
| 62 | 167902 | | KIT.STEER.ASM |
| 63 | 74780616 | | BOLT |
| 65 | 160367 | | "SPACER BRCAE,AXLE" |
| 66 | 154404 | | "BEARING-ARM,PITMA" |
| 67 | 72140618 | | BOLT RDHD 3/8-16 |
| 68 | 169827 | | BRACE AXLE |
| 79 | 19132012 | | WASHER |
| 80 | 74950612 | | BOLT.HX.NYLON3/8-16X3/ |
| 82 | 169835 | | BRKT SUSP CHASSIS FRT |
| 85 | 133835 | | XMAS TREE FASTNER |

TRACTOR--MODEL NUMBER 270451

WHEELS AND TIRES



NOTE: All component dimensions given in U. S.
Inches 1 inch = 25/4 mm

| Ref # | Part Number | Qty | Description |
|-------|-------------|-----|--------------------------|
| 1 | 59192 | | VALVE CAP |
| 2 | 65139 | | VALVE STEM LT |
| 3 | 106222X | | SUB= 122073X |
| 4 | PARTSIMAGE | | REFER TO PARTS IMAGE |
| 4 | 59904 | | TUBE.5.3/4.5/6 |
| 5 | 106732X427 | | "RIM ASM 6"" FRT" |
| 6 | 278H | | FITTING LT |
| 7 | 9040H | | "FLANGE, BEARING" |
| 8 | 106108X427 | | "RIM AS 8"" REAR" |
| 9 | 124635X | | SUB= 126957X |
| 10 | PARTSIMAGE | | REFER TO PARTS IMAGE |
| 10 | 7152J | | TUBE.18X9.5-8 |
| 11 | 104757X | | HUB CAP |
| | 144334 | | SEALANT.TIRE 10 OZ. TUBE |

